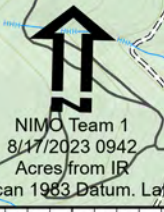
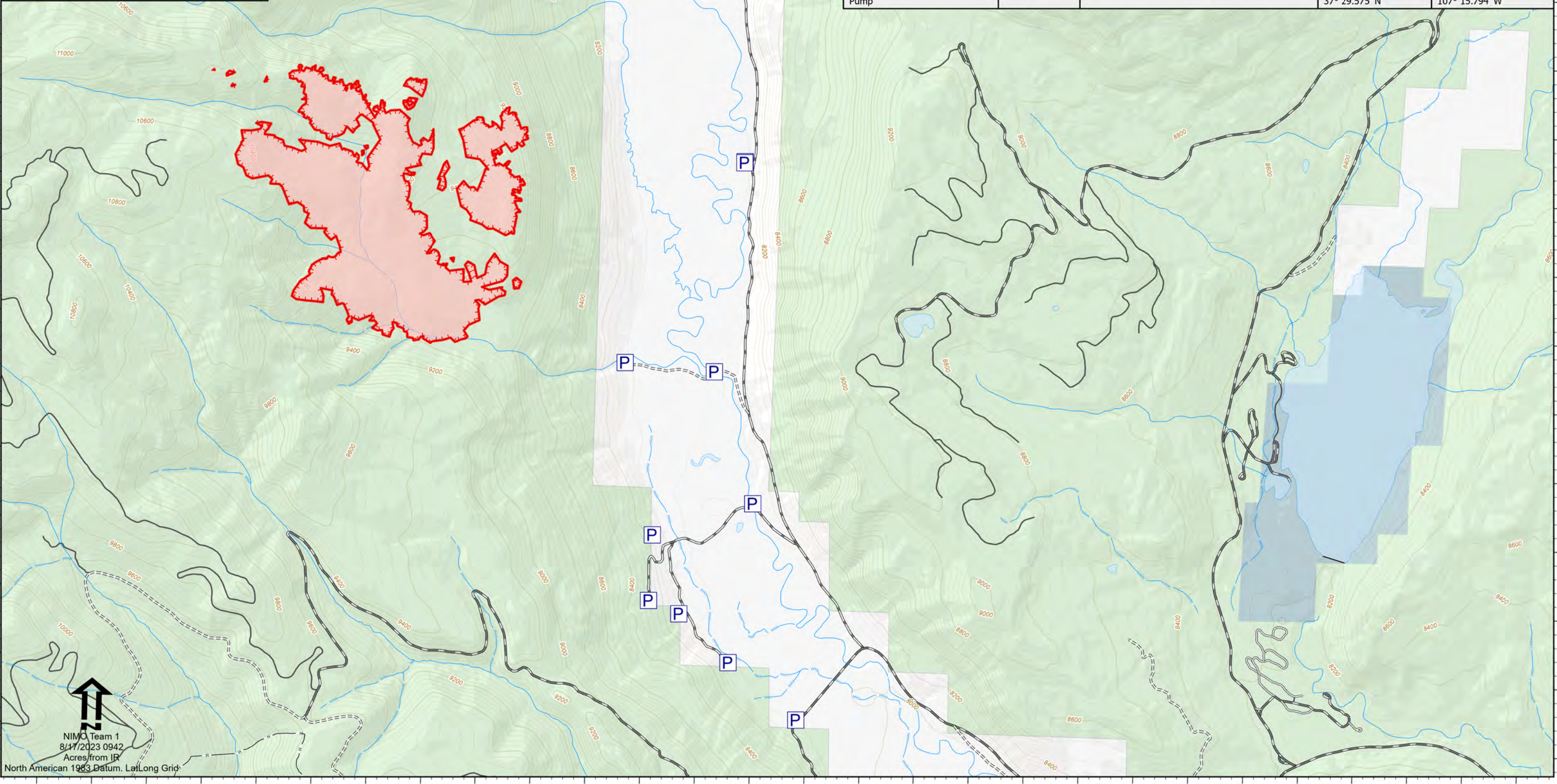


Accountable Property
 Bear Creek
 CO-SJF-000570
 8/17/2023
 415 acres at 8/15/2023 2330hrs



- Pump
- Uncontained
- Wildfire Daily Fire Perimeter
- Local Government
- US Forest Service (USFS)
- Private
- USFS Roads

Feature Category (Point Type)	Trackable ID	Comments	Latitude WGS84 DDM	Longitude WGS84 DDM
Pump	RMK-0148-557	Pump for structure A1, Two 1500 gallon tanks + sprinklers	37° 32.723' N	107° 16.243' W
Pump	RMK-01-0148-74	pump for A2 structures and fill site	37° 32.589' N	107° 16.295' W
Pump	RMK-0148-552	Pump for A3, diversions stream from Wimanuche	37° 31.601' N	107° 16.086' W
Pump	RMK-0148-429	Backup pump for A3	37° 31.597' N	107° 16.088' W
Pump	RMK-0148-448	Wimanuche fill site	37° 30.834' N	107° 16.203' W
Pump	RMK-0148-541	Pump for B1 folded tank and sprinkler lay	37° 30.860' N	107° 16.611' W
Pump	RMK-0148-317	Pump for B2 sprinkler setup	37° 30.236' N	107° 16.468' W
Pump	RMK-0148-37	water fill site for B2, B3, B4, B5	37° 30.358' N	107° 16.014' W
Pump	RMK-0148-551	Bravo 3	37° 29.997' N	107° 16.479' W
Pump	RMK-0148-413	Bravo 4	37° 29.951' N	107° 16.339' W
Pump	RMK-0148-51	Bravo 5	37° 29.778' N	107° 16.109' W
Pump			37° 29.575' N	107° 15.794' W



NIMO Team 1
 8/17/2023 0942
 Acres from IR
 North American 1983 Datum, Lat/Long Grid