

Overview

8/20/2023

Bear Creek CO-SJF-000570
415 acres at 8/15/2023 2330hrs

Quartz Ridge CO-SJF-000678
1490 acres at 8/19/2023 1734hrs

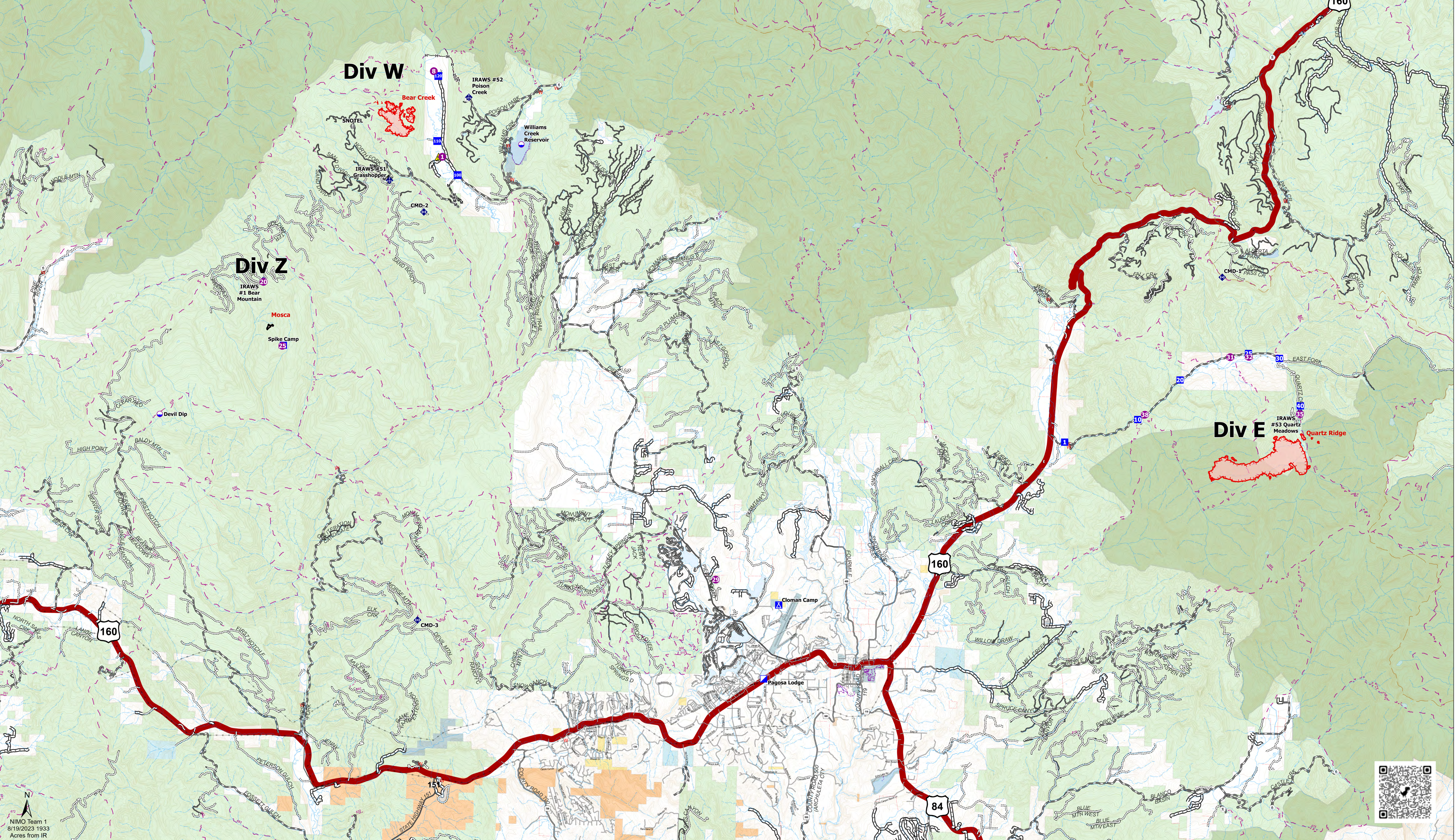
Mosca CO-SJF-000705
8 acres at 8/16/2023 (100% contained)

0 0.5 1 1.5 2 2.5 3 3.5 4 4.5 5
Miles

Incident Name	FC Point Type	Label	Comments	Elevation (Feet)	Latitude WGS84 DDM	Longitude WGS84 DDM
Bear Creek	Camp	Cloman Camp			37° 17.726' N	107° 03.598' W
Bear Creek	Dip Site	Williams Creek Reservoir	Contact Durango Dispatch each time before using	8400	37° 30.771' N	107° 13.226' W
Bear Creek	Drop Point	100			37° 29.852' N	107° 15.494' W
Bear Creek	Drop Point	110			37° 30.813' N	107° 16.258' W
Bear Creek	Drop Point	120			37° 32.681' N	107° 16.276' W
Bear Creek	Helispot	1	Approved for type 2 and 3. Road access nearby. Hazards are fence line to north and faraway power lines in vicinity. It's big	8000	37° 30.365' N	107° 16.061' W
Bear Creek	Helispot	8	Large open meadow, minimal hazards and multiple approaches available. Approved T2 and below.	8300	37° 32.815' N	107° 16.440' W
Bear Creek	Incident Command Post	Pagosa Lodge			37° 15.600' N	107° 04.081' W
Bear Creek	Mobile Weather Unit	IRAWS #1 Bear Mountain			37° 26.095' N	107° 23.291' W
Bear Creek	Mobile Weather Unit	IRAWS #52 Poison Creek			37° 32.091' N	107° 15.156' W
Bear Creek	Mobile Weather Unit	IRAWS #51 Grasshopper			37° 29.655' N	107° 17.945' W
Bear Creek	Repeater	CMD-1		11752	37° 27.392' N	106° 47.897' W
Bear Creek	Repeater	CMD-2	4312-FCK-CD93 C-12 4080-FCK-107 4150-FCK-766 INSTALLED 8/13/23 NO FIBER TAPE AT SITE	11623	37° 28.772' N	107° 16.676' W
Bear Creek	Repeater	CMD-3		9924	37° 17.060' N	107° 16.551' W
Bear Creek	Safety Zone		meadow field, suitable for crews and equipment		37° 30.366' N	107° 16.194' W
Bear Creek	Value at Risk	SNOTEL	SNOTEL precipitation gauge		37° 31.177' N	107° 19.320' W
Mosca	Camp	Spike Camp			37° 24.846' N	107° 21.617' W
Mosca	Dip Site	Devil Dip	Contact Durango Dispatch each time before using	8810	37° 22.785' N	107° 25.996' W
Mosca	Helispot	25	Approved type 2 and 3	9900	37° 34.827' N	107° 21.652' W
Mosca	Helispot	20	Type 2 and 3 approved	10000	37° 26.652' N	107° 22.388' W
Mosca	Helispot	29	Type 2 and Type 3 approved	7871	37° 18.418' N	107° 05.881' W

Incident Name	FC Point Type	Label	Comments	Elevation (Feet)	Latitude WGS84 DDM	Longitude WGS84 DDM
Quartz Ridge	Drop Point	1			37° 22.575' N	106° 53.446' W
Quartz Ridge	Drop Point	10			37° 23.265' N	106° 50.839' W
Quartz Ridge	Drop Point	20			37° 24.419' N	106° 49.343' W
Quartz Ridge	Drop Point	25			37° 25.215' N	106° 46.902' W
Quartz Ridge	Drop Point	30			37° 25.092' N	106° 45.779' W
Quartz Ridge	Drop Point	40			37° 23.745' N	106° 44.997' W
Quartz Ridge	Helispot	32	Type 2 and 3 approval	8200	37° 25.120' N	106° 46.885' W
Quartz Ridge	Helispot	38	Type 3 only	8000	37° 23.405' N	106° 50.584' W
Quartz Ridge	Helispot	31	T2	8500	37° 25.100' N	106° 47.556' W
Quartz Ridge	Helispot	35	Large open meadow:T2 and smaller	8900	37° 23.508' N	106° 45.006' W
Quartz Ridge	Mobile Weather Unit	IRAWS #53 Quartz Meadows			37° 23.566' N	106° 45.006' W

- Dip Site
- Helispot
- Incident Command Post
- Drop Point
- Camp
- Value at Risk
- Mobile Weather Unit
- Repeater
- Safety Zone
- Completed Hand Line
- Construction Line
- Contained
- Uncontained
- Wildfire Daily Fire Perimeter
- Compground
- Trailhead
- Bureau of Indian Affairs (BIA)
- Bureau of Land Management (BLM)
- Bureau of Reclamation (BOR)
- Local Government
- Other Federal
- State
- US Forest Service (USFS)
- Private
- USFS Roads
- Wilderness



NIMO Team 1
8/19/2023 1933
Acres from IR

