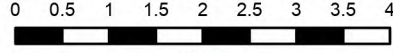


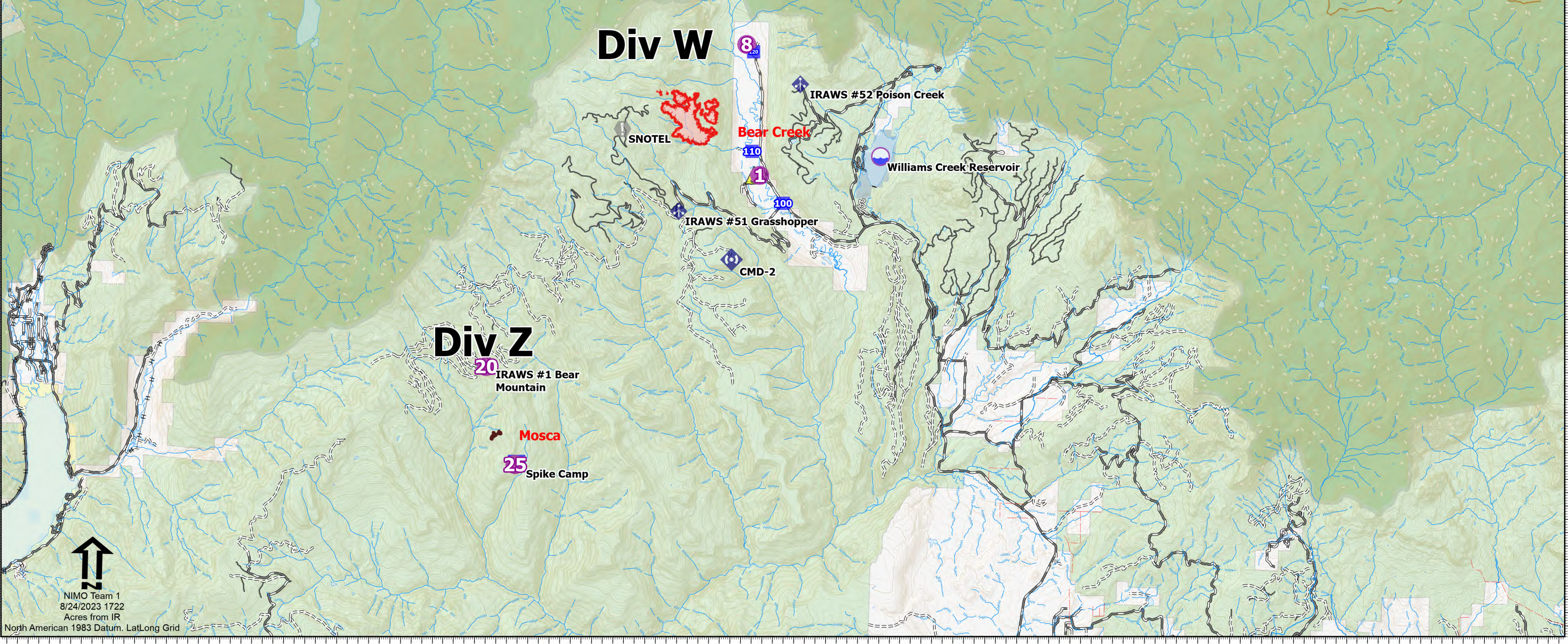
**Pilot Map-Division W**  
**Bear Creek**  
**CO-SJF-000570**  
**8/25/2023**

415 acres at 8/15/2023 2330hrs



- Miles
- Dip Site
  - Helispot
  - Drop Point
  - Camp
  - Value at Risk
  - Mobile Weather Unit
  - Repeater
  - Safety Zone
  - Contained
  - Uncontained
  - Wildfire Daily Fire Perimeter
  - Bureau of Reclamation (BOR)
  - Local Government
  - US Forest Service (USFS)
  - Private
  - USFS Roads
  - Wilderness

Incident Name	FC Point Type	Label	Comments	Elevation (Feet)	Latitude WGS84 DDM	Longitude WGS84 DDM
Bear Creek	Dip Site	Williams Creek Reservoir	Contact Durango Dispatch each time before using	8400	37° 30.771' N	107° 13.226' W
Bear Creek	Drop Point	100			37° 29.852' N	107° 15.494' W
Bear Creek	Drop Point	120			37° 32.681' N	107° 16.276' W
Bear Creek	Drop Point	110			37° 30.813' N	107° 16.258' W
Bear Creek	Helispot	1	Approved for type 2 and 3. Road access nearby. Hazards are fence line to north and faraway power lines in vicinity. It's big	8000	37° 30.365' N	107° 16.061' W
Bear Creek	Helispot	8	Large open meadow, minimal hazards and multiple approaches available. Approved T2 and below.	8300	37° 32.815' N	107° 16.440' W
Bear Creek	Mobile Weather Unit	IRAWS #52 Poison Creek			37° 32.091' N	107° 15.156' W
Bear Creek	Mobile Weather Unit	IRAWS #1 Bear Mountain			37° 26.695' N	107° 22.391' W
Bear Creek	Mobile Weather Unit	IRAWS #51 Grasshopper			37° 29.655' N	107° 17.945' W
Bear Creek	Repeater	CMD-2	4312-FCK-C093 C-12 4080-FCK-107 4150-FCK-766 INSTALLED 8/13/23 NO FIBER TAPE AT SITE	11623	37° 28.772' N	107° 16.676' W
Bear Creek	Safety Zone		meadow field, suitable for crews and equipment		37° 30.366' N	107° 16.194' W
Bear Creek	Value at Risk	SNOTEL	SNOTEL precipitation gauge		37° 31.177' N	107° 19.320' W
Mosca	Camp	Spike Camp			37° 24.846' N	107° 21.617' W
Mosca	Helispot	20	Type 2 and 3 approved	10000	37° 26.652' N	107° 22.388' W
Mosca	Helispot	25	Approved type 2 and 3	9900	37° 24.827' N	107° 21.652' W



NIMO Team 1  
 8/24/2023 1722  
 Acres from IR

North American 1983 Datum. LatLong Grid