

107°23.5'W 107°23'W 107°22.5'W 107°22'W 107°21.5'W 107°21.01'W 107°20.5'W 107°20'W 107°19.5'W 107°19'W 107°18.5'W 107°18'W 107°17.5'W 107°17'W 107°16.5'W 107°16'W 107°15.5'W 107°15'W 107°14.5'W 107°14'W 107°13.51'W 107°13'W 107°12.5'W 107°12'W 107°11.5'W

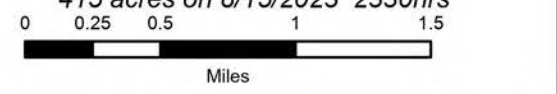
# Operations-Division W

## Bear Creek

### CO-SJF-000570

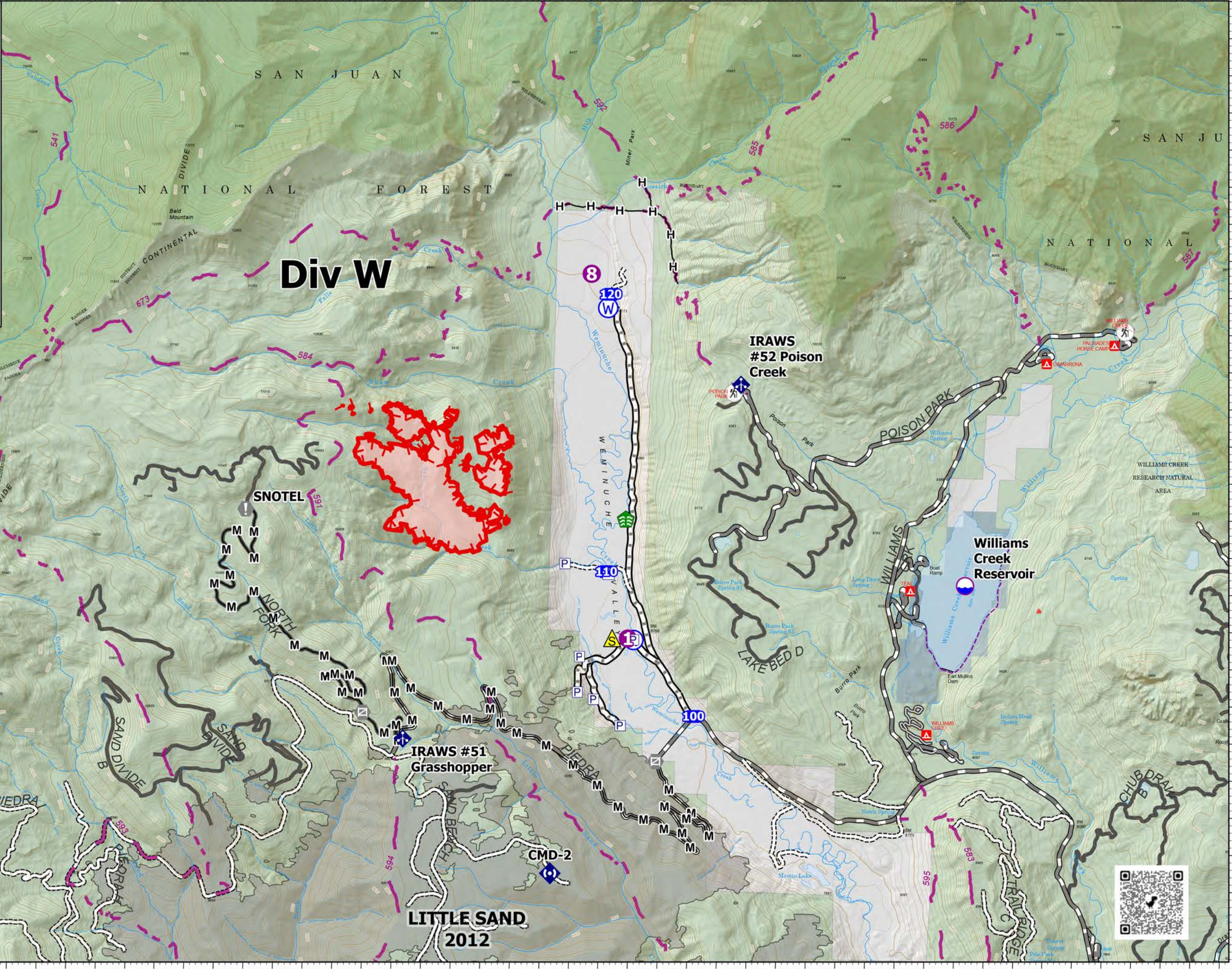
#### 8/27/2023

415 acres on 8/15/2023 2330hrs



Miles

- Dip Site
- Helispot
- Drop Point
- Value at Risk
- Gate
- Stream Crossing
- Mobile Weather Unit
- Repeater
- Safety Zone
- Water Source
- Completed Hand Line
- Completed Mixed Construction Line
- Uncontained
- Wildfire Daily Fire Perimeter
- Campground
- Trailhead
- Local Government
- US Forest Service (USFS)
- Private
- Fire History
- USFS Roads
- Wilderness



107°23.5'W 107°23'W 107°22.5'W 107°22'W 107°21.5'W 107°21.01'W 107°20.5'W 107°20'W 107°19.5'W 107°19'W 107°18.5'W 107°18'W 107°17.5'W 107°17'W 107°16.5'W 107°16'W 107°15.5'W 107°15'W 107°14.5'W 107°14'W 107°13.51'W 107°13'W 107°12.5'W 107°12'W 107°11.5'W