

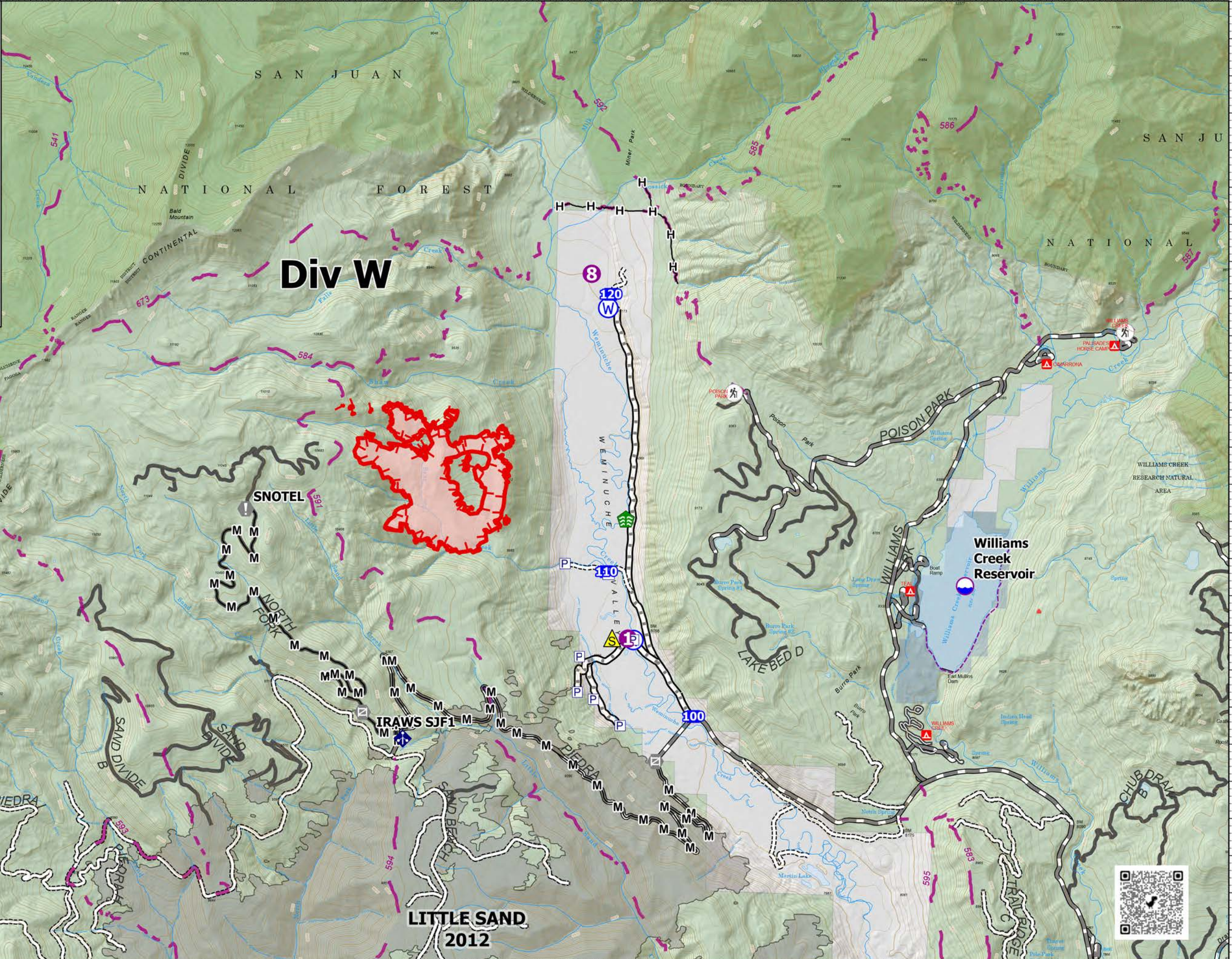
107°23.5'W 107°23'W 107°22.5'W 107°22'W 107°21.5'W 107°21.01'W 107°20.5'W 107°20'W 107°19.5'W 107°19'W 107°18.5'W 107°18'W 107°17.5'W 107°17'W 107°16.5'W 107°16'W 107°15.5'W 107°15'W 107°14.5'W 107°14'W 107°13.51'W 107°13'W 107°12.5'W 107°12'W 107°11.5'W

Operations-Division W
 Bear Creek
 CO-SJF-000570
 8/28/2023

443 acres on 8/27/2023 1000hrs

0 0.25 0.5 1 1.5
 Miles

● Dip Site	■ Uncontained
● Helispot	■ Wildfire Daily Fire Perimeter
■ Drop Point	▲ Campground
⊕ Value at Risk	⊙ Trailhead
⊙ Gate	■ Local Government
⊙ Stream Crossing	■ US Forest Service (USFS)
⊙ Mobile Weather Unit	■ Private
⊙ Safety Zone	■ Fire History
⊙ Water Source	■ Trail
H— Completed Hand Line	■ USFS Roads
M— Completed Mixed Construction Line	■ Wilderness



Div W

**LITTLE SAND
2012**



8/27/2023 1913
Mixed Methods
North American 1983 Datum, Lat/Long Grid

107°23.5'W 107°23'W 107°22.5'W 107°22'W 107°21.5'W 107°21.01'W 107°20.5'W 107°20'W 107°19.5'W 107°19'W 107°18.5'W 107°18'W 107°17.5'W 107°17'W 107°16.5'W 107°16'W 107°15.5'W 107°15'W 107°14.5'W 107°14'W 107°13.51'W 107°13'W 107°12.5'W 107°12'W 107°11.5'W