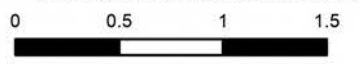


Pilot Map-Division W
Bear Creek
CO-SJF-000570
09/01/2023

443 acres on 8/29/2023 0245hrs

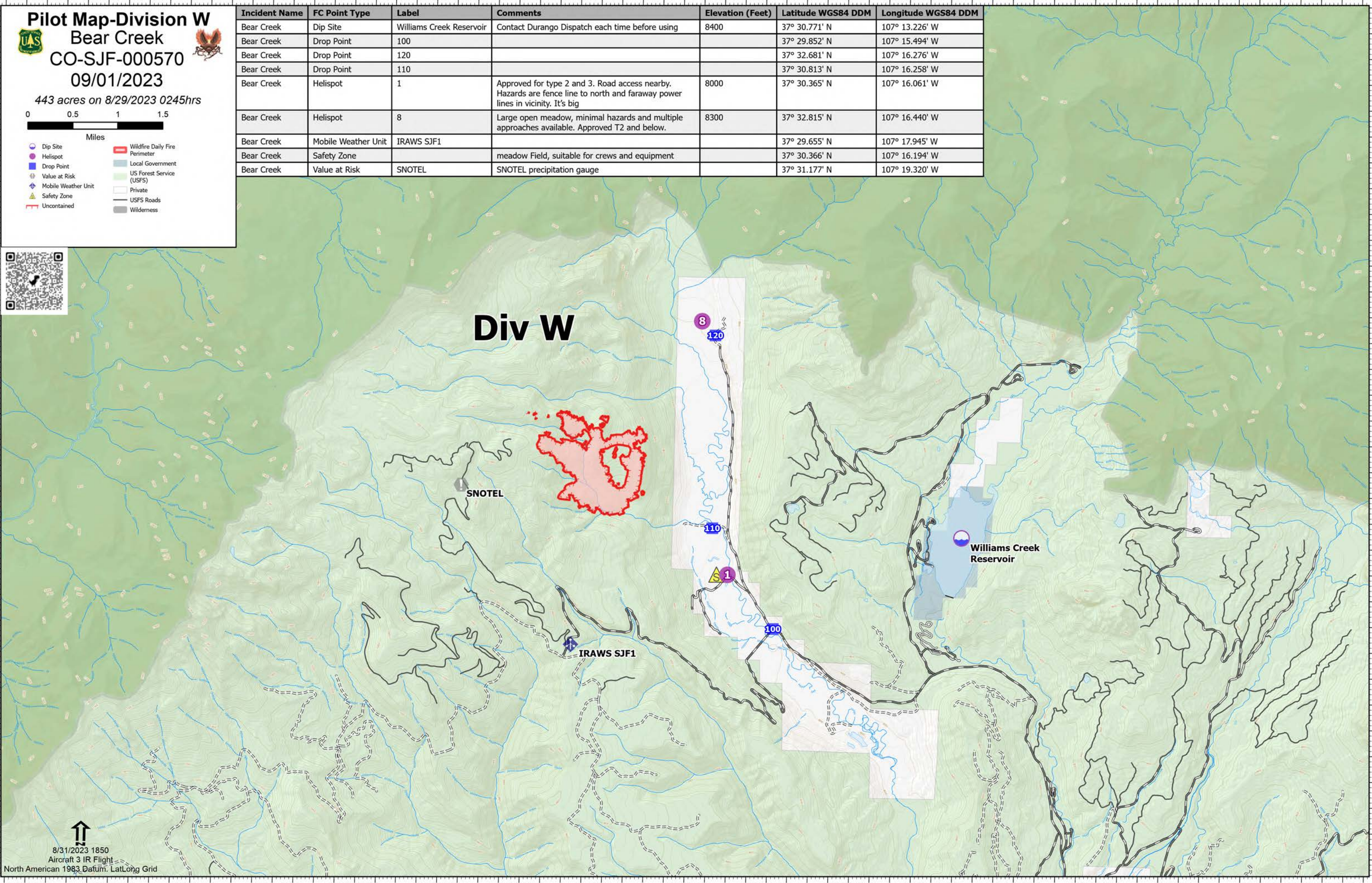


- Dip Site
- Helispot
- Drop Point
- Value at Risk
- Mobile Weather Unit
- Safety Zone
- Uncontained
- Wildfire Daily Fire Perimeter
- Local Government
- US Forest Service (USFS)
- Private
- USFS Roads
- Wilderness



Incident Name	FC Point Type	Label	Comments	Elevation (Feet)	Latitude WGS84 DDM	Longitude WGS84 DDM
Bear Creek	Dip Site	Williams Creek Reservoir	Contact Durango Dispatch each time before using	8400	37° 30.771' N	107° 13.226' W
Bear Creek	Drop Point	100			37° 29.852' N	107° 15.494' W
Bear Creek	Drop Point	120			37° 32.681' N	107° 16.276' W
Bear Creek	Drop Point	110			37° 30.813' N	107° 16.258' W
Bear Creek	Helispot	1	Approved for type 2 and 3. Road access nearby. Hazards are fence line to north and faraway power lines in vicinity. It's big	8000	37° 30.365' N	107° 16.061' W
Bear Creek	Helispot	8	Large open meadow, minimal hazards and multiple approaches available. Approved T2 and below.	8300	37° 32.815' N	107° 16.440' W
Bear Creek	Mobile Weather Unit	IRAWS SJF1			37° 29.655' N	107° 17.945' W
Bear Creek	Safety Zone		meadow field, suitable for crews and equipment		37° 30.366' N	107° 16.194' W
Bear Creek	Value at Risk	SNOTEL	SNOTEL precipitation gauge		37° 31.177' N	107° 19.320' W

Div W



8/31/2023 1850
 Aircraft 3 IR Flight
 North American 1983 Datum, LatLong Grid