

Pilot Map-Division W
Bear Creek
CO-SJF-000570
09/05/2023

446 acres on 9/04/2023 0230hrs

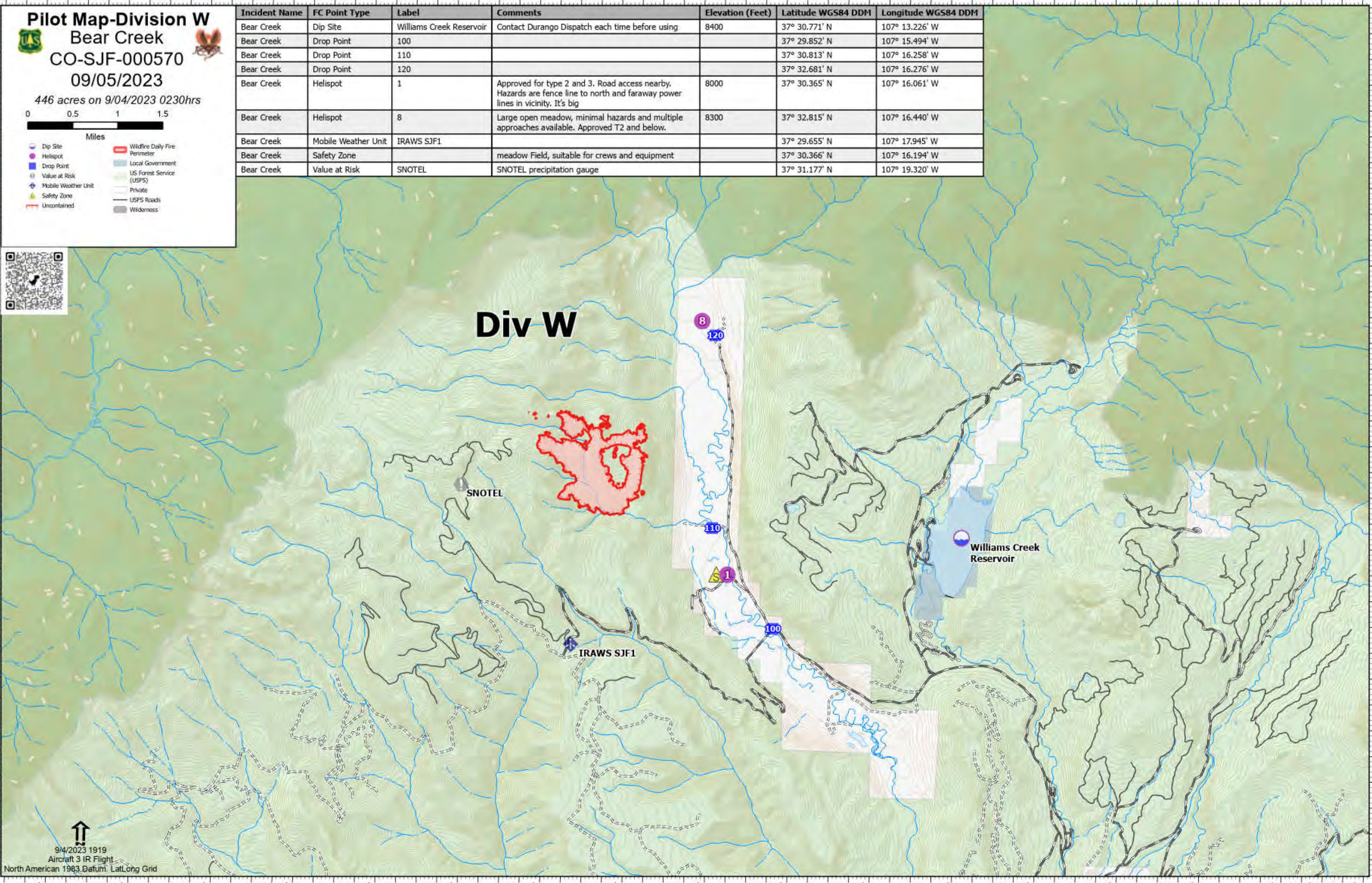


- Miles**
- Dip Site
 - Helispot
 - Drop Point
 - Value at Risk
 - Mobile Weather Unit
 - Safety Zone
 - Uncontained
 - Wildfire Daily Fire Perimeter
 - Local Government
 - US Forest Service (USFS)
 - Private
 - USFS Roads
 - Wilderness



| Incident Name | FC Point Type | Label | Comments | Elevation (Feet) | Latitude WGS84 DDM | Longitude WGS84 DDM |
|---------------|---------------------|--------------------------|--|------------------|--------------------|---------------------|
| Bear Creek | Dip Site | Williams Creek Reservoir | Contact Durango Dispatch each time before using | 8400 | 37° 30.771' N | 107° 13.226' W |
| Bear Creek | Drop Point | 100 | | | 37° 29.852' N | 107° 15.494' W |
| Bear Creek | Drop Point | 110 | | | 37° 30.813' N | 107° 16.258' W |
| Bear Creek | Drop Point | 120 | | | 37° 32.681' N | 107° 16.276' W |
| Bear Creek | Helispot | 1 | Approved for type 2 and 3. Road access nearby. Hazards are fence line to north and faraway power lines in vicinity. It's big | 8000 | 37° 30.365' N | 107° 16.061' W |
| Bear Creek | Helispot | 8 | Large open meadow, minimal hazards and multiple approaches available. Approved T2 and below. | 8300 | 37° 32.815' N | 107° 16.440' W |
| Bear Creek | Mobile Weather Unit | IRAWS SJF1 | | | 37° 29.655' N | 107° 17.945' W |
| Bear Creek | Safety Zone | | meadow field, suitable for crews and equipment | | 37° 30.366' N | 107° 16.194' W |
| Bear Creek | Value at Risk | SNOTEL | SNOTEL precipitation gauge | | 37° 31.177' N | 107° 19.320' W |

Div W



9/4/2023 1919
 Aircraft 3 IR Flight
 North American 1983 Datum, Lat,Long Grid