

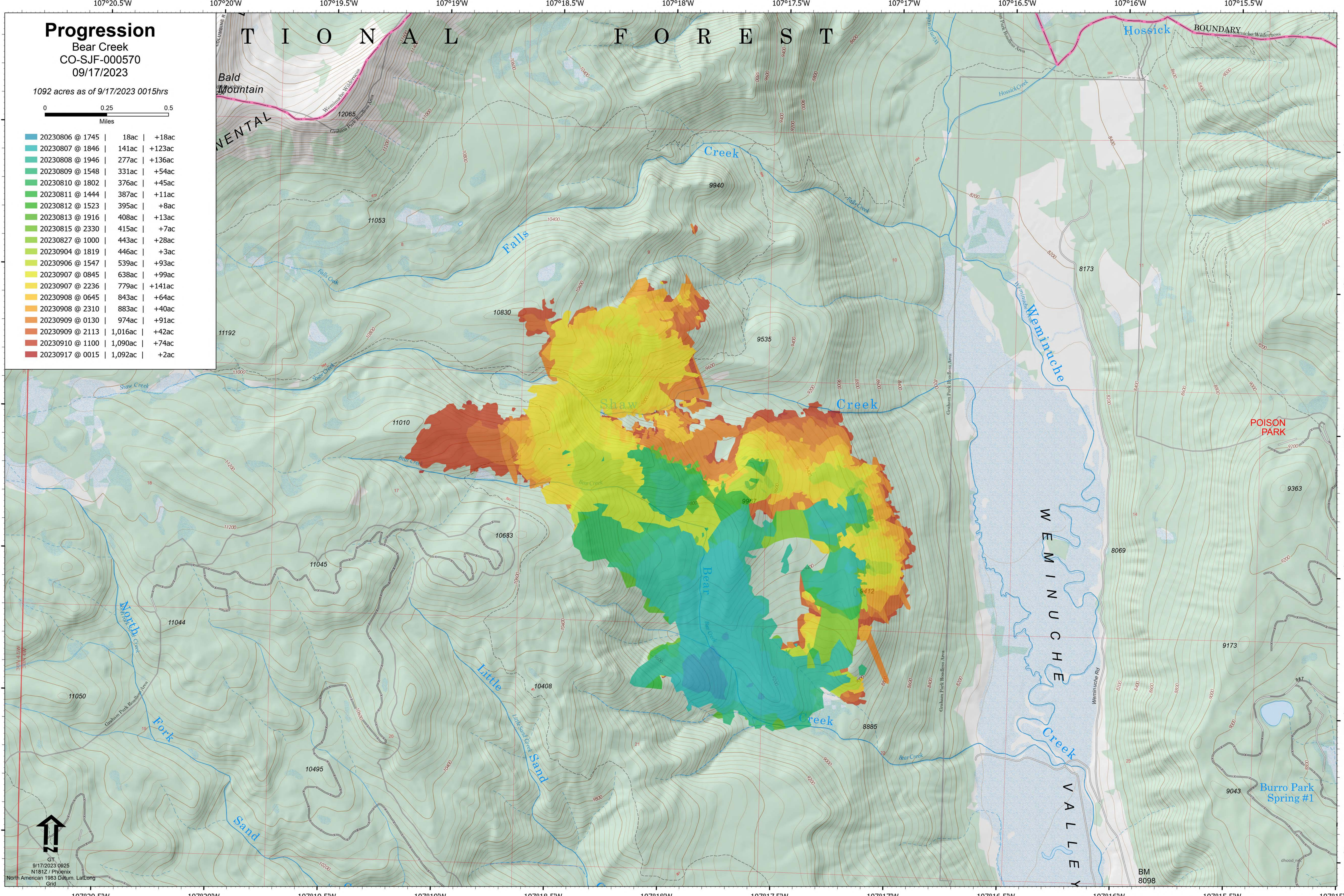
Progression

Bear Creek
CO-SJF-000570
09/17/2023

1092 acres as of 9/17/2023 0015hrs



20230806 @ 1745	18ac	+18ac
20230807 @ 1846	141ac	+123ac
20230808 @ 1946	277ac	+136ac
20230809 @ 1548	331ac	+54ac
20230810 @ 1802	376ac	+45ac
20230811 @ 1444	387ac	+11ac
20230812 @ 1523	395ac	+8ac
20230813 @ 1916	408ac	+13ac
20230815 @ 2330	415ac	+7ac
20230827 @ 1000	443ac	+28ac
20230904 @ 1819	446ac	+3ac
20230906 @ 1547	539ac	+93ac
20230907 @ 0845	638ac	+99ac
20230907 @ 2236	779ac	+141ac
20230908 @ 0645	843ac	+64ac
20230908 @ 2310	883ac	+40ac
20230909 @ 0130	974ac	+91ac
20230909 @ 2113	1,016ac	+42ac
20230910 @ 1100	1,090ac	+74ac
20230917 @ 0015	1,092ac	+2ac



GT
9/17/2023 0925
N181Z / Phoenix
North American 1983 Datum, Lattong
Grid

BM
8098