

107°23.5'W 107°23'W 107°22.5'W 107°22'W 107°21.5'W 107°21.01'W 107°20.5'W 107°20'W 107°19.5'W 107°19'W 107°18.5'W 107°18'W 107°17.5'W 107°17'W 107°16.5'W 107°16'W 107°15.5'W 107°15'W 107°14.5'W 107°14'W 107°13.51'W 107°13'W 107°12.5'W 107°12'W 107°11.5'W

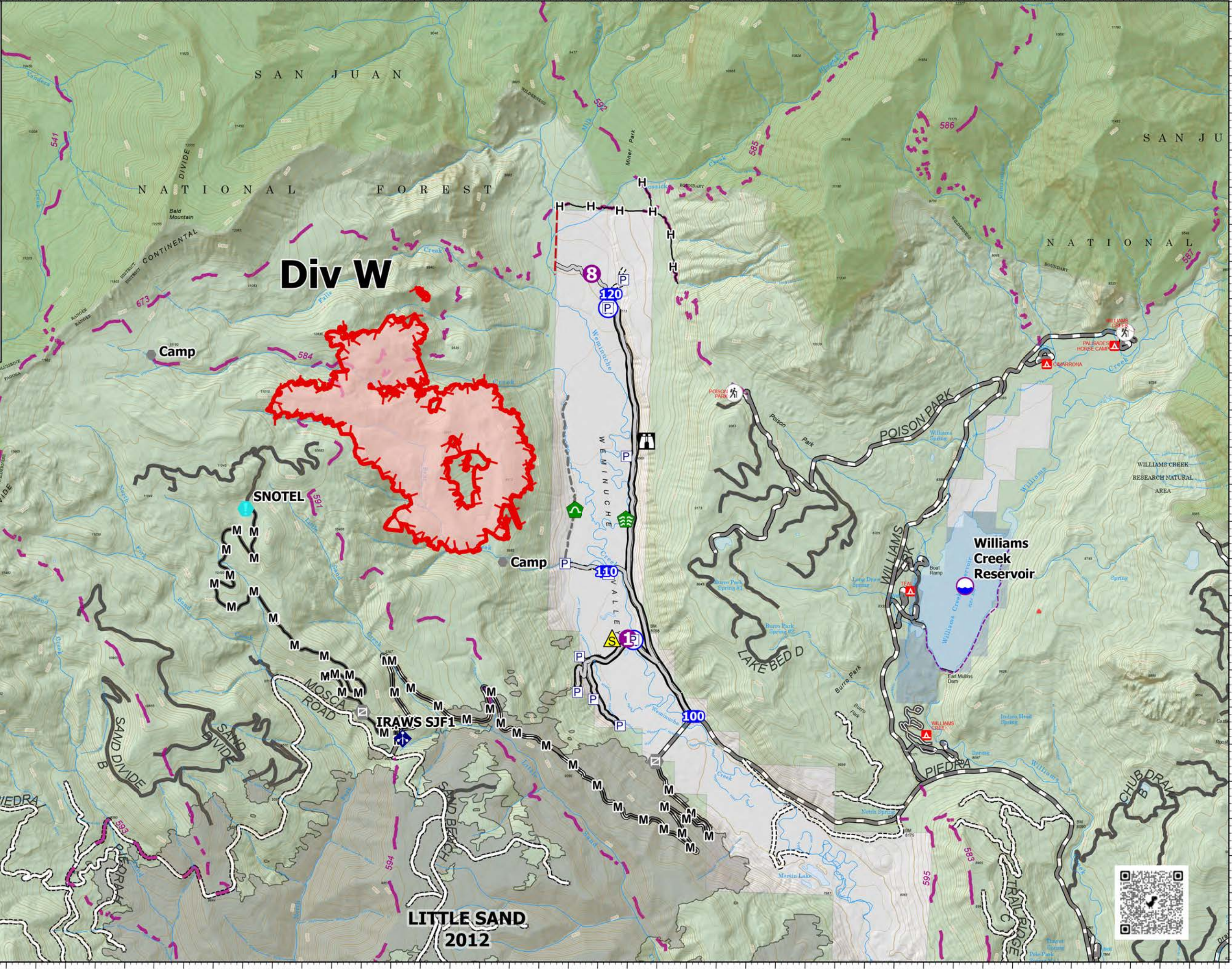
**Operations-Division W**

**Bear Creek**  
CO-SJF-000570  
As of 09/30/2023

1094 acres on 9/29/2023 2145hrs

0 0.25 0.5 1 1.5  
Miles

Dip Site	Access or Improved Road
Helispot	Fence
Drop Point	Other
Lookout	Uncontained
Value at Risk	Wildfire Daily Fire Perimeter
Other	Campground
Gate	Trailhead
Bridge	Local Government
Stream Crossing	US Forest Service (USFS)
Culvert	Private
Mobile Weather Unit	Fire History
Safety Zone	USFS Roads
Water Source	Wilderness
Completed Hand Line	
Completed Mixed Construction Line	



107°23.5'W 107°23'W 107°22.5'W 107°22'W 107°21.5'W 107°21.01'W 107°20.5'W 107°20'W 107°19.5'W 107°19'W 107°18.5'W 107°18'W 107°17.5'W 107°17'W 107°16.5'W 107°16'W 107°15.5'W 107°15'W 107°14.5'W 107°14'W 107°13.51'W 107°13'W 107°12.5'W 107°12'W 107°11.5'W



North American 1983 Datum Lat/Long Grid  
Aircraft 3  
9/30/2023 1024