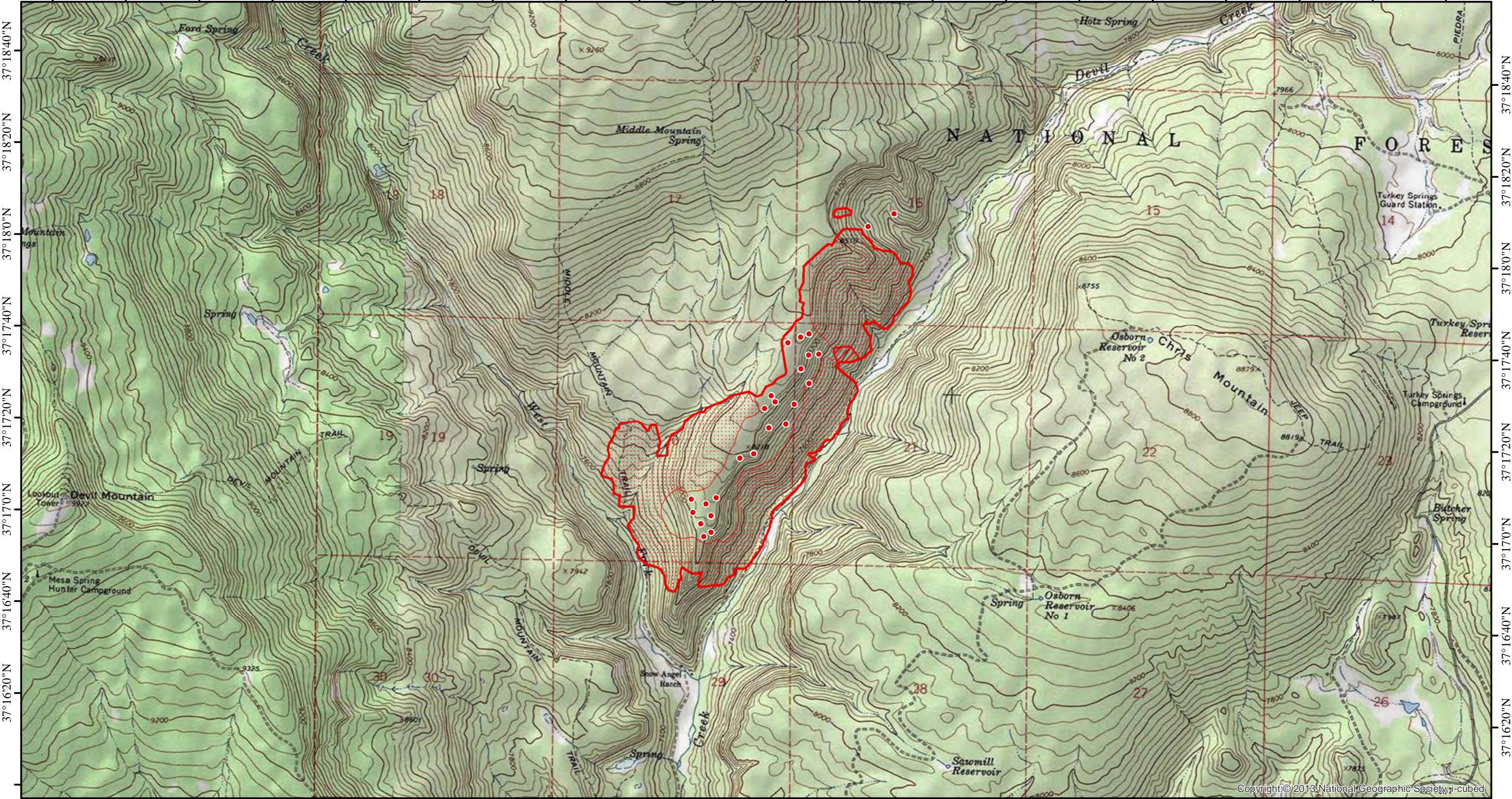
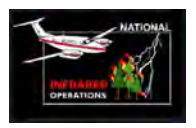


107°16'40"W 107°16'20"W 107°16'0"W 107°15'40"W 107°15'20"W 107°15'0"W 107°14'40"W 107°14'20"W 107°14'0"W 107°13'40"W 107°13'20"W 107°13'0"W 107°12'40"W 107°12'20"W 107°12'0"W 107°11'40"W 107°11'20"W 107°11'0"W 107°10'40"W 107°10'20"W

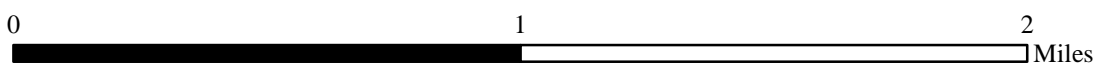






107°16'40"W 107°16'20"W 107°16'0"W 107°15'40"W 107°15'20"W 107°15'0"W 107°14'40"W 107°14'20"W 107°14'0"W 107°13'40"W 107°13'20"W 107°13'0"W 107°12'40"W 107°12'20"W 107°12'0"W 107°11'40"W 107°11'20"W 107°11'0"W 107°10'40"W 107°10'20"W

INFRARED MAP
CHRIS MOUNTAIN
CO-SJF-000348
 Infrared (Interpreted) Acres: 477
 July 3, 2023 @ 0015 MDT



IRIN: Cheron Ferland
Duluth, MN
Nad 83 Zone 13



-  IR Isolated Heat Source
-  IR Heat Perimeter
-  IR Intense Heat
-  IR Scattered Heat

Copyright © 2013 National Geographic Society, i-cubed