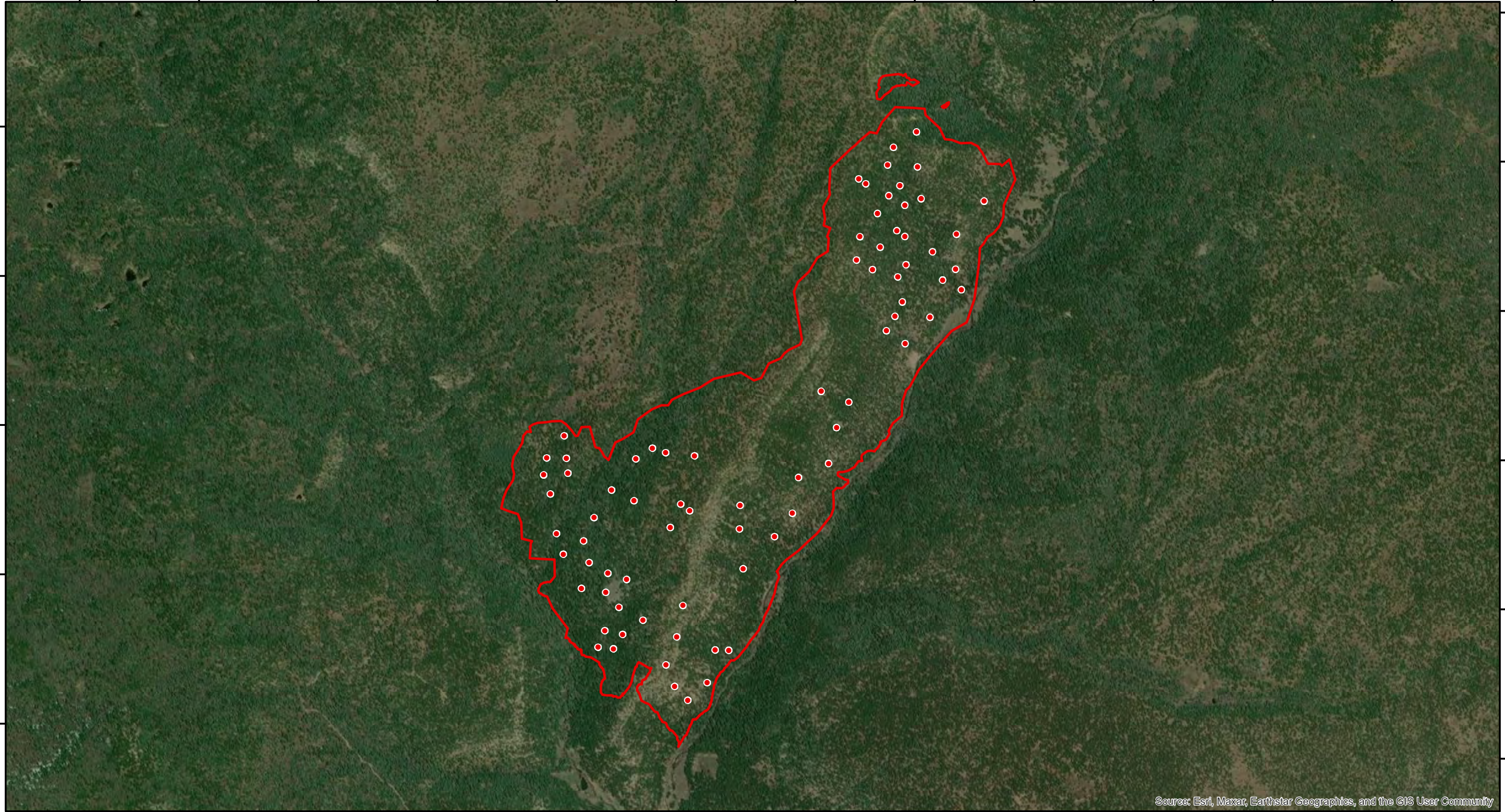


107°15'20"W 107°15'0"W 107°14'40"W 107°14'20"W 107°14'0"W 107°13'40"W 107°13'20"W 107°13'0"W 107°12'40"W 107°12'20"W 107°12'0"W 107°11'40"W

37°18'0"N
37°17'40"N
37°17'20"N
37°17'0"N
37°16'40"N

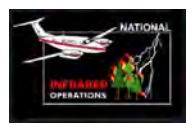
37°18'20"N
37°18'0"N
37°17'40"N
37°17'20"N
37°17'0"N
37°16'40"N



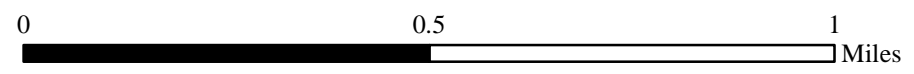
Source: Esri, Maxar, Earthstar Geographics, and the GIS User Community



107°15'20"W 107°15'0"W 107°14'40"W 107°14'20"W 107°14'0"W 107°13'40"W 107°13'20"W 107°13'0"W 107°12'40"W 107°12'20"W 107°12'0"W 107°11'40"W 107°11'20"W

INFRARED MAP
CHRIS MOUNTAIN
CO-SJF-000348
Infrared (Interpreted) Acres: 510
July 6, 2023 @ 1938 MDT



IRIN: Cheron Ferland
Duluth, MN
Nad 83 Zone 13



-  IR Isolated Heat Source
-  IR Heat Perimeter