

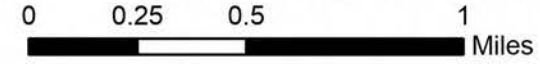


Operations

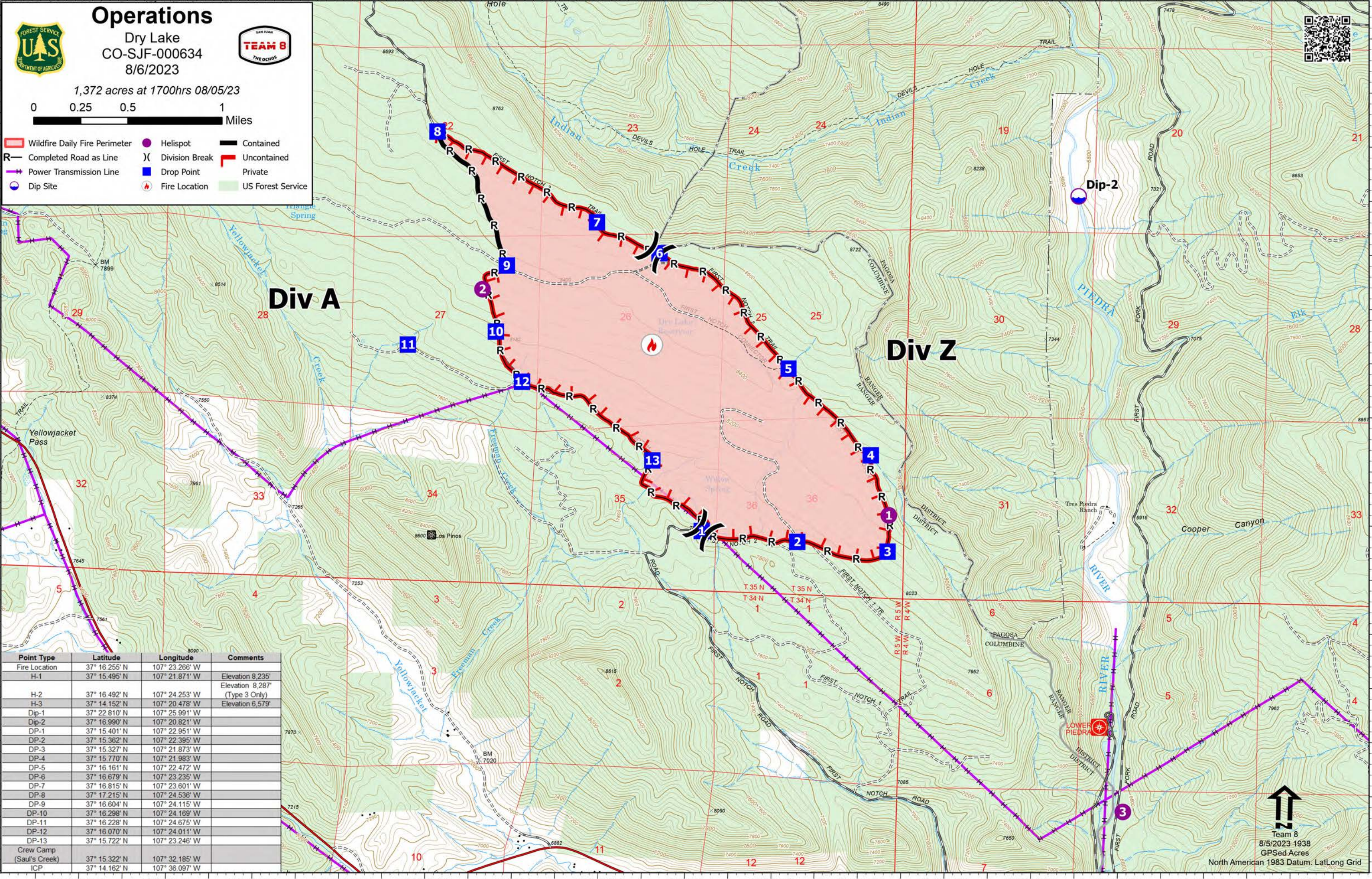
Dry Lake
CO-SJF-000634
8/6/2023



1,372 acres at 1700hrs 08/05/23



- Wildfire Daily Fire Perimeter
- Completed Road as Line
- Power Transmission Line
- Dip Site
- Helispot
- Division Break
- Drop Point
- Fire Location
- Contained
- Uncontained
- Private
- US Forest Service



Point Type	Latitude	Longitude	Comments
Fire Location	37° 16.255' N	107° 23.266' W	
H-1	37° 15.495' N	107° 21.871' W	Elevation 8,235'
H-2	37° 16.492' N	107° 24.253' W	Elevation 8,287'
H-3	37° 14.152' N	107° 20.478' W	(Type 3 Only)
Dip-1	37° 22.810' N	107° 25.991' W	Elevation 6,579'
Dip-2	37° 16.990' N	107° 20.821' W	
DP-1	37° 15.401' N	107° 22.951' W	
DP-2	37° 15.362' N	107° 22.395' W	
DP-3	37° 15.327' N	107° 21.873' W	
DP-4	37° 15.770' N	107° 21.983' W	
DP-5	37° 16.161' N	107° 22.472' W	
DP-6	37° 16.679' N	107° 23.235' W	
DP-7	37° 16.815' N	107° 23.601' W	
DP-8	37° 17.215' N	107° 24.536' W	
DP-9	37° 16.604' N	107° 24.115' W	
DP-10	37° 16.298' N	107° 24.169' W	
DP-11	37° 16.228' N	107° 24.675' W	
DP-12	37° 16.070' N	107° 24.011' W	
DP-13	37° 15.722' N	107° 23.246' W	
Crew Camp (Sauf's Creek)	37° 15.322' N	107° 32.185' W	
ICP	37° 14.162' N	107° 36.097' W	



Team 8
8/5/2023-1938
GPSed Acres
North American 1983 Datum: LatLong Grid