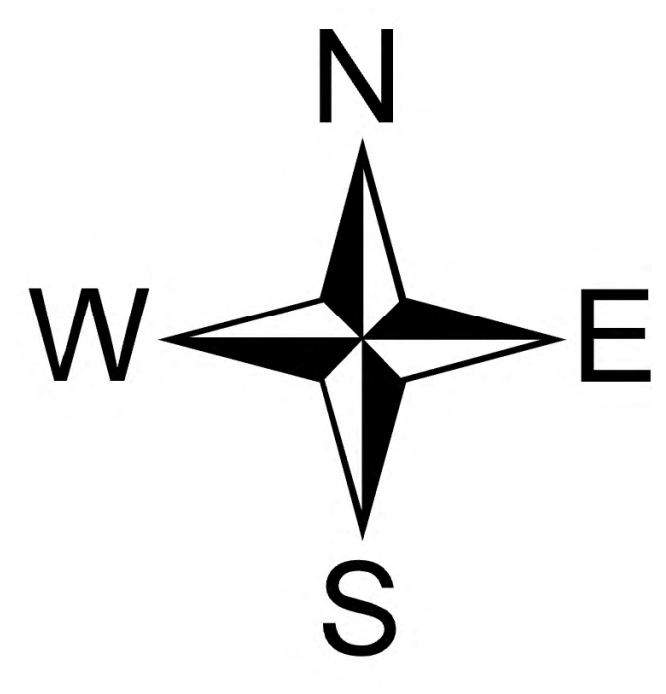
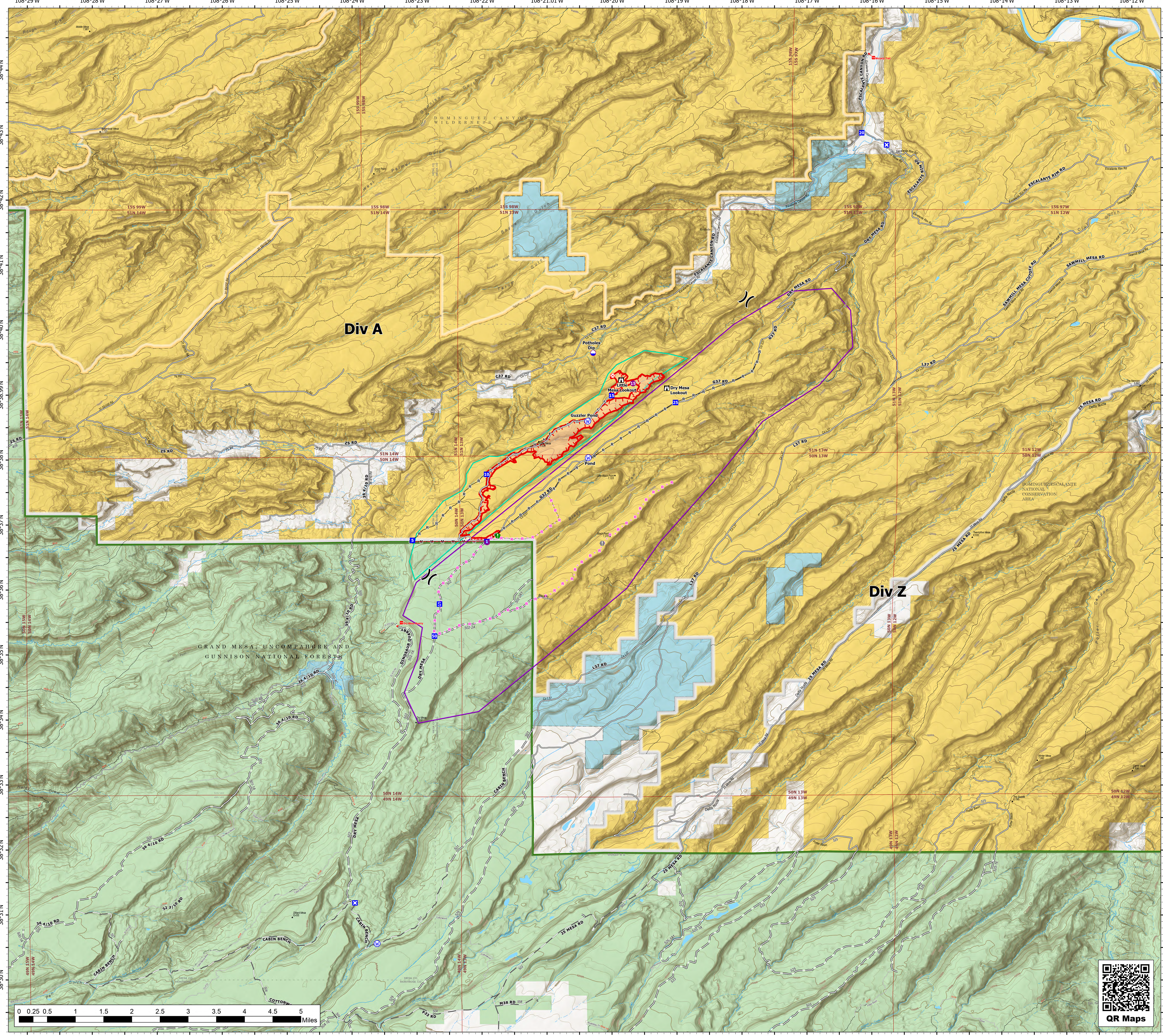


# Operations

Little Mesa  
2023-COUPD-000186  
8/11/2023

450 acres at 8/10/2023 @ 1308

- Air Operations**
  - Dip Site
  - Helispot
- Assignment Breaks**
  - Division Break
- Logistics**
  - Drop Point
  - Closure
  - Staging Area
- Operations**
  - Lookout
- Fire**
  - Fire Origin
- Reference**
  - Value at Risk
- Repair**
  - Resource Location
- Water**
  - Water Source
- Event Polygon**
  - Wildfire Daily Fire Perimeter
- Ops Completed**
  - Completed Hand Line
  - Completed Mixed Construction Line
  - Completed Road as Line
- Ops Planned**
  - Planned Road as Line
- Reference**
  - Access or Improved Road
  - Fence
- Perimeter Line**
  - Uncontained
- Options**
  - Option 1
  - Option 2
- Recreation Site**
  - Recreation Site
- Secondary Dirt**
  - Secondary Dirt
- Gravel Road**
  - Gravel Road, Suitable for Passenger Car
- Dirt (Not Paved)**
  - Dirt (Not Paved)
- Road, Not Maintained for Passenger Car**
  - Road, Not Maintained for Passenger Car
- Secondary Dirt**
  - Secondary Dirt
- Trail**
  - Trail
- National Trail USGS**
  - National Trail USGS
- Railroad**
  - Railroad
- Proclaimed FS Boundary**
  - Proclaimed FS Boundary
- Ranger District Boundary**
  - Ranger District Boundary
- FS Wilderness Boundary**
  - FS Wilderness Boundary
- Wild and Scenic River**
  - Wild and Scenic River
- Wilderness Boundary, BLM**
  - Wilderness Boundary, BLM
- Other Designated Boundary**
  - Other Designated Boundary
- Spring/Seep**
  - Spring/Seep
- Waterfall**
  - Waterfall
- Stream / River**
  - Stream / River
- Lake / Pond**
  - Lake / Pond
- Lake / Pond (Intermittent)**
  - Lake / Pond (Intermittent)
- Stream/River, Artificial Path**
  - Stream/River, Artificial Path
- Canal / Ditch**
  - Canal / Ditch
- Stream/River Intermittent**
  - Stream/River Intermittent
- Freshwater Emergent and Freshwater Forested/Shrub Wetland**
  - Freshwater Emergent and Freshwater Forested/Shrub Wetland
- Freshwater Emergent Wetland**
  - Freshwater Emergent Wetland
- Township**
  - Township
- Forest Service Land**
  - Forest Service Land
- State Lands**
  - State Lands
- Bureau of Land Management Lands**
  - Bureau of Land Management Lands



BLM CO - Southwest District  
8/10/2023 1749  
Acres from Mixed Methods  
WGS 1984 Datum, Lat/Long Grid

