

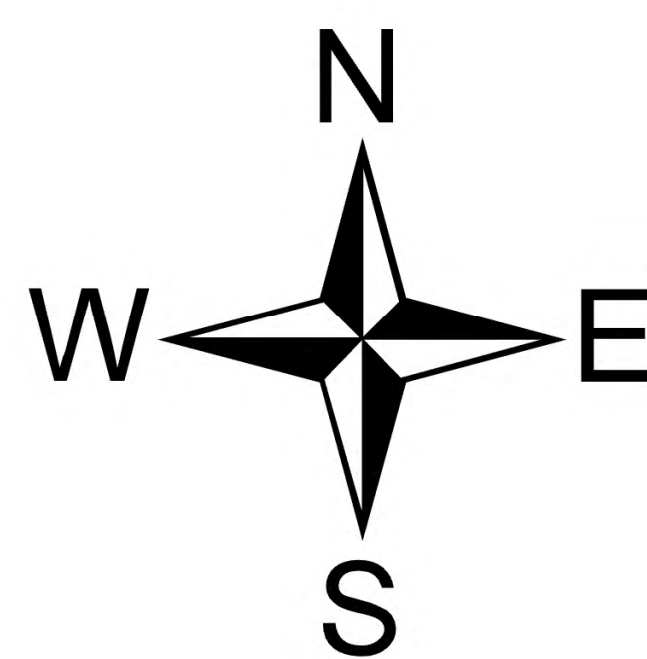
Operations

Little Mesa
2023-COUPD-000186
8/12/2023

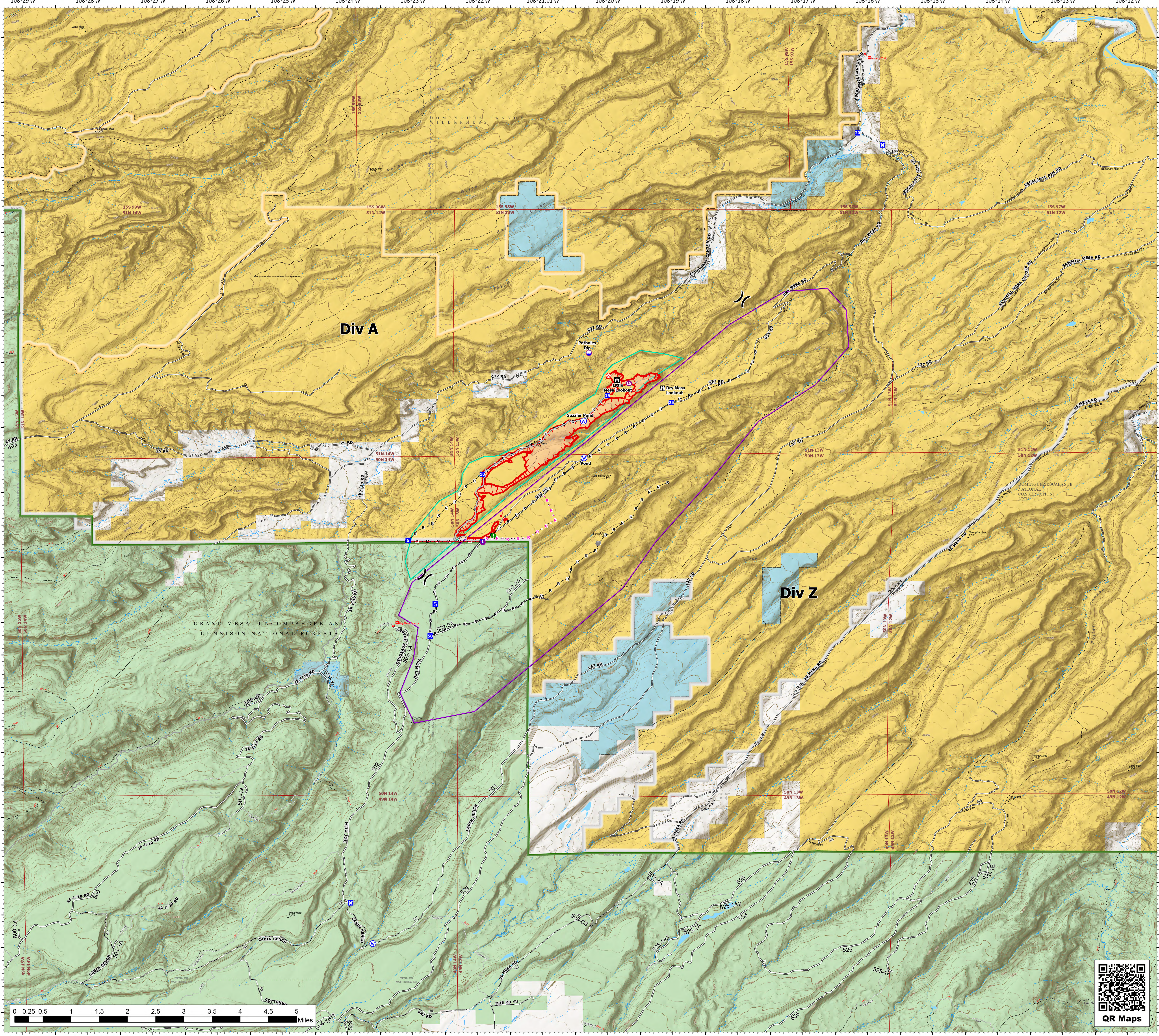
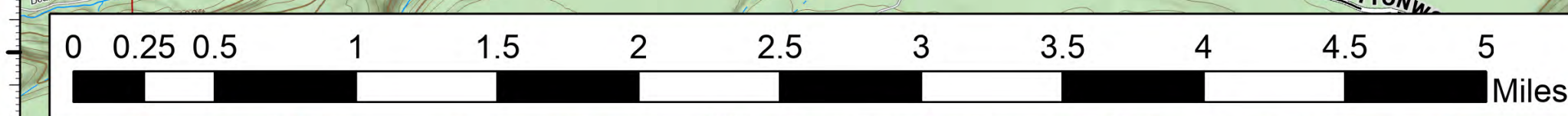
531 acres at 8/10/2023 @ 1308

- Air Operations**
 - Dip Site
 - Helispot
 - Assignment Breaks**
 - Division Break
 - Logistics**
 - Drop Point
 - Closure
 - Staging Area
 - Operations**
 - Lookout
 - Fire**
 - Fire Origin
 - Reference**
 - Value at Risk
 - Repair**
 - Resource Location
- Water**
 - Water Source
 - Event Polygon**
 - Wildfire Daily Fire Perimeter
 - Ops Completed**
 - Completed Hand Line
 - Completed Mined Construction Line
 - Completed Road as Line
 - Ops Planned**
 - Planned Road as Line
 - Reference**
 - Access or Improved Road
 - Fence
 - Perimeter Line**
 - Uncontained
 - Options**
 - Option 1
 - Option 2

- Recreation Site
- Secondary Dirt
- Gravel Road: Gravel Road, Suitable for Passenger Car
- Dirt (Not Paved)
- Road, Not Maintained for Passenger Car
- Secondary Dirt
- Trail
- National Trail USGS
- Railroad
- Proclaimed FS Boundary
- Ranger District Boundary
- FS Wilderness Boundary
- Wild and Scenic River
- Wilderness Boundary, BLM
- Other Designated Boundary
- Spring/Seep
- Waterfall
- Stream / River
- Lake / Pond
- Lake / Pond (Intermittent)
- Stream/River, Artificial Path
- Canal / Ditch
- Stream/River Intermittent
- Freshwater Emergent and Freshwater Forested/Shrub Wetland
- Freshwater Emergent Wetland
- Township
- Forest Service Land
- State Lands
- Bureau of Land Management Lands



BLM CO - Southwest District
8/11/2023 2056
Acres from Mixed Methods
WGS 1984 Datum, Lat/Long Grid



QR Maps