

# Transportation

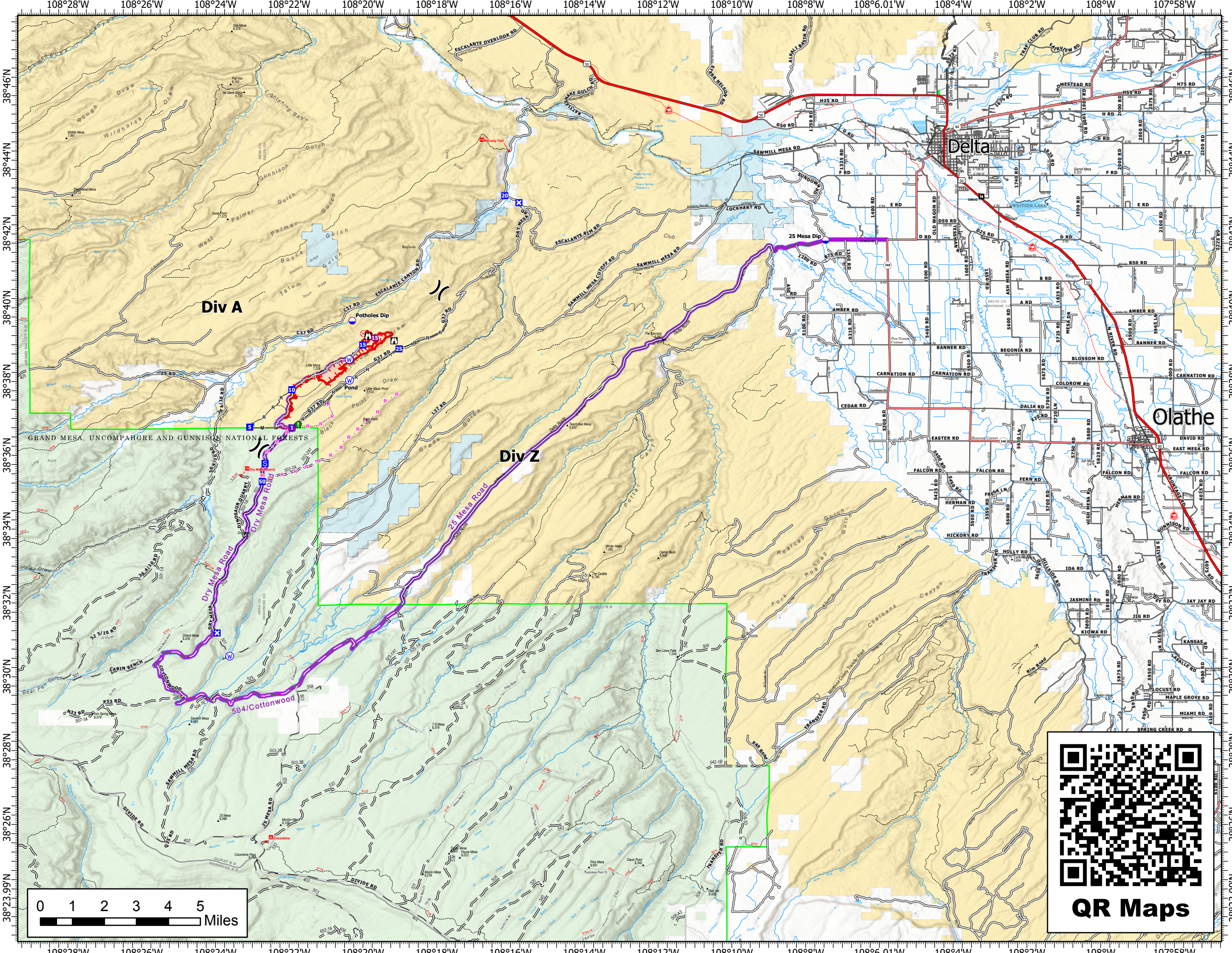
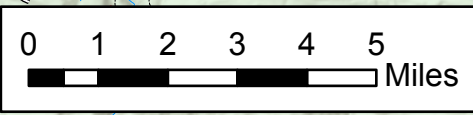
Little Mesa  
2023-COUPD-000186  
8/10/2023

414 acres at 8/9/2023 @ 1808

- Dip Site
- Helispot
- Division Break
- Drop Point
- Closure
- Staging Area
- Lookout
- Fire Origin
- Value at Risk
- Resource Location
- Water Source
- Wildfire Daily Fire Perimeter
- Label Point
- Completed Hand Line
- Completed Mixed Construction Line
- Completed Road as Line
- Planned Road as Line
- Access or Improved Road
- Fence
- Uncontained
- Route To Fire - 25 Mesa Rd
- Primary Highway
- Secondary Highway
- Primary Paved
- Secondary Paved
- State Road (Dirt)
- Secondary Dirt
- Paved Road
- Gravel Road; Gravel Road, Suitable for Passenger Car
- Dirt (Not Paved)
- Road, Not Maintained for Passenger Car
- Secondary Paved
- Secondary Dirt
- National Trail
- Trail
- National Trail USGS
- Forest Service Land
- State Lands
- Bureau of Land Management Lands



BLM CO - Southwest District  
8/10/2023 1210  
Acres from Mixed Methods  
WGS 1984 Datum. Lat/Long Grid



QR Maps