

Lowline Fire Long-term Plan

Grand Mesa, Uncompahgre, and Gunnison National Forests

Version 1.0 August 6, 2023

CO-GMF-000176



Rocky Mountain CIMT1

Dan Dallas, IC

Mark Giacoletto, Deputy

Long-term
Plan



Maps with
MAPs



Structure Protection
Plans



Table of Contents

| | |
|---|----|
| Lowline Fire Long-term Management Information..... | 1 |
| Management Action Point #1 (Wilderness Streams) | 3 |
| Management Action Point #2 (Mill Creek West) | 4 |
| Management Action Point #3 (Star Mountain Ranch)..... | 5 |
| Management Action Point #4 (Antelope TS)..... | 6 |
| Management Action Point #5 (Sage Grouse)..... | 7 |
| Management Action Point #6 (Squirrel Creek) | 8 |
| Management Action Point #7 (Middle Creek) | 9 |
| Management Action Point #8 (Willow Creek)..... | 10 |
| Management Action Point #9 (Rainbow Creek)..... | 11 |
| Management Action Point #10 (Beaver Creek)..... | 12 |
| Management Action Point #11 (Steers Gulch)..... | 13 |
| Management Action Point #12 (East Elk)..... | 14 |
| Management Action Point #13 (Burnout Squirrel Creek)..... | 15 |
| Expected Future Fire Behavior and Growth..... | 16 |
| FSPRO 14 Day | 17 |
| ERC Huntsman..... | 18 |
| ERC High Elevation SIG..... | 19 |
| Probability of Season Ending Event..... | 20 |
| Significant Wildland Fire Potential Outlook August 2023 | 21 |
| Significant Wildland Fire Potential Outlook September 2023..... | 22 |
| Climatology | 23 |
| Heat Dryness Wind Index 1981-2010 CFSR Climatology..... | 24 |
| Max Daily HDWI 30-Day Archive | 25 |
| Max Daily HDWI | 26 |
| 8-14 Day Temperature Outlook | 27 |
| 8-14 Day Precipitation Outlook..... | 28 |
| Risk of High Hinds..... | 29 |
| Probabilities of Energy Release Component Anomalies | 30 |
| U.S. Seasonal Drought Outlook..... | 31 |

Lowline Fire Long-term Management Information

Current Situation (08/06/23)

The Lowline Fire was discovered on July 26, 2023. The cause of the fire was determined to be lighting. The Fire escaped the initial attack, and a complex incident management team was ordered later that afternoon. The fire size was reported at 1,816 at the end of the day on August 5.

The fire is burning in a combination of mixed conifer with a heavy dead and down component with stands of aspen within and outside of the fire perimeter. Most of the fire is burning on National Forest and a portion is burning on private property. The private property lies to the east and south of the fire perimeter and is comprised of sage-grasslands, stands of aspen and irrigated hay fields in the bottomlands adjacent Ohio Creek. The aspen stands and sage-grasslands have been resistant to burning until today when minor spotting was reported because of interior burning. No control problems were reported.

Most of the east, south, and north sides of the fire have been contained. Due to the irregular nature of the fire perimeter, indirect attack tactics that included burnout of fire lines were used on portions of the fire. Burnout operations were interrupted for 3 days by intermittent rain showers. Interior burning picked up again on August 5th and 6th and is expected to continue for a few days.

The west side of the fire is burning in the Squirrel Creek drainage and is uncontained due to heavy fuel loading in the mixed conifer stands and steep terrain making it inaccessible to firefighters.

Incident Objectives

A new decision was updated in WFDDS on August 6, 2023. There were no changes in the decision from the previous one dated July 29, 2023. The incident objectives include the following:

1. Safety of Firefighters and the public will be the highest priority throughout all phases of the incident. Manage the risk to fire fighters and the public by utilizing a risk-based approach to decision making. Ensure quality tradeoff conversations occur with Agency Administrators, partners, and stakeholders.
2. Utilize appropriate fire strategies to minimize fire impacts on residences, commercial properties, critical community infrastructure to reduce the potential for adverse health, social, financial, and economic hardships. These include:
 - Structures within the planning area including but not limited to Wilderness Streams, isolated ranches and private properties along CR730, Mill Creek, and Eagle Ridge Ranch.
 - Critical Gunnison Sage Grouse Habitat
 - Critical water infrastructure resources (reservoirs, dams, ditches)
 - Cultural and historical resources including but not limited to Castle Creek Cow Camp
 - Agricultural and Ranching Operations
 - Antelope Timber Sale
3. Maintain and enhance relationships with cooperators, stakeholders, the local community and adjoining agencies through effective and timely communication, engagement, and information sharing.
4. Consider operational strategies that minimize the impact of smoke to smoke sensitive areas and receptors by adjusting tactics, monitoring smoke impacts, and following guidance in state smoke management plans and coordinating with state and local Air Quality Control Commission.

Management Strategy

Using the Incident Strategic Assessment Process (ISAP) it was determined that the risk to responders was high, and the probability of success was low. The assessment also indicated that it was unlikely that the fire would

reach values to be protected in the near-term as well as the long-term provided the fire is held in the Squirrel Creek drainage on the north and south sides.

Using the ISAP to inform agency administrators, the suppression strategy for the east, south and north side of the fire is to use a combination of direct and indirect attack to contain and control the fire. The west side of the fire is being managed under a confine strategy where the objective is to keep the fire within the Squirrel Creek drainage and the West Elk Wilderness which lies to the west. Plans are in place to use indirect fire line, firing operations and natural features to keep the fire in the Squirrel Creek drainage and herd it toward the Wilderness. The fire is expected to burn for several weeks until a season ending event occurs.

Long-term Products

As part of the delegation of authority and leader's intent, RMA CIMT 1 was requested to prepare a long-term plan for the Lowline Fire. The products prepared by the team for the long-term plan that are included in this document consist of the following:

- Management action points and descriptions for uploading in WFDDS.
- A map(s) displaying values at risk, management action points (MAP), and MAP descriptions.
- Structure Protection Assessments and Plans
- 14-Day FSPRO Run
- Expected future fire behavior and growth.
- Climatology

FTP Site Access to Products

Long-term Plan (Password: 000176)

https://ftp.wildfire.gov/public/incident_specific_data/rocky_mtn/2023/2023_Lowline/Long%20Term%20Plan/MAP%20Descriptions/

Maps with Management Action Points (Password: 000176)

https://ftp.wildfire.gov/public/incident_specific_data/rocky_mtn/2023/2023_Lowline/Long%20Term%20Plan/Maps/

Structure Protection Plans (Password: 000176)

https://ftp.wildfire.gov/public/incident_specific_data/rocky_mtn/2023/2023_Lowline/Long%20Term%20Plan/Structure%20Protection%20Plans/

Management Action Point #1 (Wilderness Streams)

Condition

Fire Crosses or is likely to cross MAP and has become established North of MAP 1. Expected Fire behavior and weather indicate continued growth and advancement towards the structures in Wilderness Springs.

Actions

Review and update WFDSS decision, management action points and other support documents.

Determine the need for trail, road, and area closures.

Evaluate incident organizational needs.

Evaluate hazards, risk, and probability of success of suppression options and initiate appropriate actions to contain and control advancing fire to protect the structures and private inholdings in the sub-division of Wilderness Streams.

Mobilize resources and initiate structure protection plans.

Notify cooperators and public of increase in fire activity and planned actions. Key Cooperators include:

- AA USFS – Curtis Keetch 970-366-0669
- AA DFPC - Luke Odom 970-773-4259
- AA Bureau of Land Management - District Manager Stephanie Connolly 970-216-5243, Field Manager Jon Kaminsky 970-456-8157
- USFS District Ranger - Dayle Funka 970-596-4854
- Gunnison County Sheriff - Adam Murdie 970-975-1777
- Gunnison County Emergency Manager - Scott Morrill 970-275-1370
- Gunnison Fire Chief - Hugo Ferchau 970-641-8153
- Castleton Ranch Manager - Craig Jackson (General Manager) 970-596-8770
- Gunnison County Electric Association - John Stoeber 970-901-1691

Coordinate with County sheriffs and emergency operation managers on the need for pre-evacuation and mandatory evacuation notices for the residences in Wilderness Streams.

Prepare/implement public information plan. The plan may include items such as the location of the information center; shelter locations for people and animals; advice on structure protection; air quality alerts; evacuation notices and updates; and information to other entities that may be impacted by the fire.

- USFS PAO - Kimberly Phillips 970-874-6717

Resources

1 Type 3 IC, 2 Wildland Fire Engines, 2 Type 2IA Crews or Suppression Modules 1 Dozer, 1 Type 3 Helicopter, 1 Type 1 Helicopter

Management Action Point #2 (Mill Creek West)

Condition

Fire Crosses or likely to cross MAP and has become established south, and southwest of MAP. Expected Fire behavior and weather indicate continued growth and advancement toward the structures in Mill Creek West.

Actions

Review and update WFDSS decision, management action points, and other support documents.

Notify the Antelope timber sale contractor of the threat and possibility of needing to move equipment.

Evaluate hazards, risks, and probability of success of suppression options and initiate appropriate actions to contain and control advancing fire to protect the structures and private inholdings in Mill Creek West

Mobilize resources and initiate structure protection plans. Ensure Pumps, Hose and Sprinkler kits are operational.

Determine the need for trail, road, and area closures.

Evaluate incident organizational needs.

Notify cooperators and the public of the increase in fire activity and planned actions. Key Cooperators include:

- AA USFS - Curtis Keetch 970-366-0669
- AA DFPC - Luke Odom 970-773-4259
- AA Bureau of Land Management - District Manager Stephanie Connolly 970-216-5243, Field Manager Jon Kaminsky 970-456-8157
- USFS District Ranger - Dayle Funka 970-596-4854
- Gunnison County Sheriff - Adam Murdie 970-975-1777
- Gunnison County Emergency Manager - Scott Morrill 970-275-1370
- Gunnison Fire Chief - Hugo Ferchau 970-641-8153
- Gunnison County Electric Association - John Stoeber 970-901-1691

Coordinate with County sheriffs and emergency operation managers on the need for pre-evacuation and mandatory evacuation notices for the residences in Mill Creek West.

Prepare/implement public information plan. The plan may include items such as the location of the information center; shelter locations for people and animals; advice on structure protection; air quality alerts; evacuation notices and updates; and information to other entities that may be impacted by the fire.

- USFS PAO - Kimberly Phillips 970-874-6717

Resources

1 Type 3/4 IC, 2 Wildland Fire Engines, 2 Type 2IA Crews or Suppression Modules 1 Dozer, 1 Type 3 Helicopter, 1 Type 1 Helicopter

Management Action Point #3 (Star Mountain Ranch)

Condition

Fire Crosses or is likely to cross MAP and has become established east, northeast of MAP 3. Expected Fire behavior and weather indicate continued growth and advancement towards the structures and private inholdings in the sub-division of Star Mountain Ranch and Eagle Ridge.

Actions

Review and update WFDSS decision, management action points and other support documents.

Evaluate hazards, risk, and probability of success of suppression options and initiate appropriate action to contain and control advancing fire to protect the structures and private inholdings in the subdivision of Star Mountain Ranch and Eagle Ridge.

Mobilize resources and initiate structure protection plans.

Evaluate incident organizational needs.

Notify range permittees of the potential need to move cattle.

Notify cooperators and public of increase in fire activity and planned actions. Key Cooperators include:

- AA USFS - Curtis Keetch 970-366-0669,
- AA DFPC - Luke Odom 970-773-4259
- AA Bureau of Land Management - District Manager Stephanie Connolly 970-216-5243, Field Manager Jon Kaminsky 970-456-8157
- USFS District Ranger - Dayle Funka 970-596-4854
- Gunnison County Sheriff - Adam Murdie 970-975-1777
- Gunnison County Emergency Manager - Scott Morrill 970-275-1370
- Gunnison Fire Chief - Hugo Ferchau 970-641-8153
- BLM Range Allotments - Andrew Bryant 307-333-3344 or Tara Devalosis 970-275-6289
- Gunnison County Electric Association - John Stoeber 970-901-1691

Coordinate with County sheriffs and emergency operation managers on the need for pre-evacuation and mandatory evacuation notices for the residences in Star Mountain Ranch and Eagle Ridge.

Prepare/implement public information plan. The plan may include items such as the location of the information center; shelter locations for people and animals; advice on structure protection; air quality alerts; evacuation notices and updates; and information to other entities that may be impacted by the fire.

- USFS PAO - Kimberly Phillips 970-874-6717

Resources

1 Type 1 helicopter, 1 Type 3 Helicopter, 1 Type 3/4 IC, 5 Wildland Fire Engines, 2 Type 2 IA crew or Suppression Module, 2 Dozers

Management Action Point #4 (Antelope TS)

Condition

Fire Crosses or is likely to cross MAP and has become established south and west of MAP 4. Expected Fire behavior and weather indicate continued growth and advancement towards the Antelope Timber Sale.

Actions

Review and update WFDSS decision, complexity analysis and management action points.

Evaluate fire growth and threat to timber sale. Inform Montrose Timber of potential threat to timber sale and make recommendation to move logging equipment.

Prepare evacuation plans for distant residential areas if needed.

Notify cooperators and public of increase in fire activity and planned actions. Key Cooperators include:

- AA USFS - Curtis Keetch 970-366-0669
- AA DFPC - Luke Odom 970-773-4259
- AA Bureau of Land Management - District Manager Stephanie Connolly 970-216-5243, Field Manager Jon Kaminsky 970-456-8157
- USFS District Ranger - Dayle Funka 970-596-4854
- Gunnison County Sheriff - Adam Murdie 970-975-1777
- Gunnison County Emergency Manager - Scott Morrill 970-275-1370
- Gunnison Fire Chief - Hugo Ferchau 970-641-8153

Prepare/implement public information plan. The plan may include items such as the location of the information center; air quality alerts; and information regarding impacts on timber sales and other entities that may be impacted by the fire.

- USFS PAO - Kimberly Phillips 970-874-6717

Resources

1 Type 3/4 IC, 2 Wildland Fire Engines, 2 Type 2IA Crews or Suppression Modules, 1 Dozer, 1 Type 3 Helicopter, 1 Type 1 Helicopter

Management Action Point #5 (Sage Grouse)

Condition

Fire Crosses or is likely to cross MAP and has become established east of MAP 5. Expected Fire behavior and weather indicate continued growth and advancement toward the subdivisions of Eagle Ridge and Castle Mountain.

Actions

Review and update WFDSS decision, complexity analysis, and management action points.

Evaluate hazards, risks, and probability of success of suppression options and initiate appropriate actions to contain and control advancing fire to protect the structures and private inholdings in the sub-divisions of Eagle Ridge and Castle Mountain.

Evaluate fire growth and threat to the subdivision of Eagle Ridge, Castle Mountain, sage grouse habitat, private inholdings, and agricultural land.

Implement evacuation plan for Eagle Ridge and Castle Mountain.

Notify Colorado Wildlife and Parks of the threat to Gunnison Sage Grouse habitat.

Notify cooperators and the public of the increase in fire activity and planned actions. Key Cooperators include:

- AA USFS - Curtis Keetch 970-366-0669
- AA DFPC - Luke Odom 970-773-4259
- AA Bureau of Land Management - District Manager Stephanie Connolly 970-216-5243, Field Manager Jon Kaminsky 970-456-8157
- USFS District Ranger - Dayle Funka 970-596-4854
- Gunnison County Sheriff - Adam Murdie 970-975-1777
- Gunnison County Emergency Manager - Scott Morrill 970-275-1370
- Gunnison Fire Chief - Hugo Ferchau 970-641-8153
- Colorado Fish, Wildlife and Parks (Colorado State Wildlife Areas) - Brandon Diamond 970-275-4295, Nate Steward 303-236-4216
- Gunnison County Electric Association - John Stoeber 970-901-1691

Prepare/implement public information plan. The plan may include items such as the location of the information center; shelter locations for people and animals; advice on structure protection; air quality alerts; evacuation notices and updates; and information to other entities that may be impacted by the fire.

- USFS PAO - Kimberly Phillips 970-874-6717

Resources

1 Type 3/4 IC, 2 Wildland Fire Engines, 2 Type 2IA Crews or Suppression Modules, 1 Dozer, 1 Type 3 Helicopter, 1 Type 1 Helicopter

Management Action Point #6 (Squirrel Creek)

Condition

Fire Crosses or is likely to cross MAP and has become established south, southwest or southeast of MAP 6. Expected Fire behavior and weather indicate continued growth and advancement towards the indirect line on the South Ridge in Division Y.

Actions

Evaluate current and expected fire behavior. Mobilize resources to Division Yankee and If needed Initiate burnout operations along the ridge line to the wilderness boundary.

Notify cooperators and public of increase in fire activity and planned actions. Key Cooperators include:

- AA USFS - Curtis Keetch 970-366-0669
- AA DFPC - Luke Odom 970-773-4259
- AA Bureau of Land Management - District Manager Stephanie Connolly 970-216-5243, Field Manager Jon Kaminsky 970-456-8157
- USFS District Ranger - Dayle Funka 970-596-4854
- Gunnison County Sheriff - Adam Murdie 970-975-1777
- Gunnison County Emergency Manager - Scott Morrill 970-275-1370
- Gunnison Fire Chief - Hugo Ferchau 970-641-8153

Prepare/implement public information plan. The plan may include items such as the location of the information center; air quality alerts; and information to other entities that may be impacted by the fire.

- USFS PAO - Kimberly Phillips 970-874-6717

Resources

1 Type 3/4 IC, 2 Wildland Fire Module Type 1 or Suppression Modules, 1 Type 3 helicopter, 1 wildland fire engine

Management Action Point #7 (Middle Creek)

Condition

Fire Crosses or is likely to cross MAP and has become established north, northwest, or northeast of MAP 7. Expected Fire behavior and weather indicate continued growth and advancement towards the indirect fire line along Middle Creek.

Actions

Evaluate current and expected fire behavior. Mobilize resources to Division Whiskey (W) and if needed Initiate burnout operations along the indirect fire line in Middle Creek to the wilderness boundary.

Notify cooperators and public of increase in fire activity and planned actions. Key Cooperators include:

- AA USFS - Curtis Keetch 970-366-0669
- AA DFPC - Luke Odom 970-773-4259
- AA Bureau of Land Management - District Manager Stephanie Connolly 970-216-5243, Field Manager Jon Kaminsky 970-456-8157
- USFS District Ranger - Dayle Funka 970-596-4854
- Gunnison County Sheriff - Adam Murdie 970-975-1777
- Gunnison County Emergency Manager - Scott Morrill 970-275-1370
- Gunnison Fire Chief - Hugo Ferchau 970-641-8153

Prepare/implement public information plan. The plan may include items such as the location of the information center; shelter locations for people and animals; advice on structure protection; air quality alerts; evacuation notices and updates; and information to other entities that may be impacted by the fire.

- USFS PAO - Kimberly Phillips 970-874-6717

Resources

1 Type 3/4 IC, 2 Wildland Fire Module Type 1 or Suppression Modules, 1 Type 3 Helicopter, 1 wildland fire engine

Management Action Point #8 (Willow Creek)

Condition

Fire Crosses or is likely to cross MAP and has become established south, southwest, or southeast of MAP 8 and has moved out of the wilderness. Expected Fire behavior and weather indicate continued growth.

Actions

Review and update WFDSS decision, management action points, and other support documents.

Evaluate current and expected fire behavior. Mobilize resources and initiate appropriate suppression actions.

Review existing area closures and consider additional closures.

Begin Structure assessments for the NPS Blue Mesa North Campgrounds.

Notify CWP of threat to Gunnison Sage Grouse habitat and Sapinero State, Centennial State, Welt Ranch, and 4C Ranch Wildlife Areas.

Notify cattle allotment permittees of potential threat and need to move cattle.

Notify cooperators and the public of the increase in fire activity and planned actions. Key Cooperators include:

- AA USFS - Curtis Keetch 970-366-0669
- AA DFPC - Luke Odom 970-773-4259
- AA Bureau of Land Management - District Manager Stephanie Connolly 970-216-5243, Field Manager Jon Kaminsky 970-456-8157
- USFS District Ranger - Dayle Funka 970-596-4854
- Gunnison County Sheriff - Adam Murdie 970-975-1777
- Gunnison County Emergency Manager - Scott Morrill 970-275-1370
- Gunnison Fire Chief - Hugo Ferchau 970-641-8153
- Colorado Fish, Wildlife and Parks (Colorado State Wildlife Areas) - Brandon Diamond 970-275-4295, Nate Steward 303-236-4216
- BLM Range Allotments - Andrew Bryant 307-333-3344 or Tara Devalosis 970-275-6289
- NPS Curecanti National Recreation Area – NPS Curecanti National Recreation Area – Lori Rome 970-922-9216

Prepare/implement public information plan. The plan may include items such as the location of the information center; shelter locations for people and animals; advice on structure protection; air quality alerts; evacuation notices and updates; and information to other entities that may be impacted by the fire.

- USFS PAO - Kimberly Phillips 970-874-6717

Resources

1 ICT 3/4, 1 Type 3 helicopter, 2 Wildland Fire Engines, 1 Type 2 IA crew or Suppression Module.

Management Action Point #9 (Rainbow Creek)

Condition

Fire Crosses or is likely to cross MAP and has become established south, southwest, or southeast of MAP 9 and has moved out of the wilderness. Expected Fire behavior and weather indicate continued growth.

Actions

Review and update WFDSS decision, management action points, and other support documents.

Evaluate hazards, risks, and probability of success of suppression options and initiate appropriate actions to contain and control advancing fire to protect the structures and private inholdings South of MAP 9.

Evaluate incident organizational needs.

Review existing area closures and consider additional closures.

Issue Pre-Evacuation notice for the NPS Blue Mesa North Campgrounds.

Notify CWP of threat to Gunnison Sage Grouse habitat and Sapinero State, Centennial State, Welt Ranch, and 4C Ranch Wildlife Areas.

Notify cattle allotment permittees of potential threat and need to move cattle.

Notify cooperators and the public of the increase in fire activity and planned actions. Key Cooperators include:

- AA USFS - Curtis Keetch 970-366-0669
- AA DFPC - Luke Odom 970-773-4259
- AA Bureau of Land Management - District Manager Stephanie Connolly 970-216-5243, Field Manager Jon Kaminsky 970-456-8157
- USFS District Ranger - Dayle Funka 970-596-4854
- Gunnison County Sheriff - Adam Murdie 970-975-1777
- Gunnison County Emergency Manager - Scott Morrill 970-275-1370
- Gunnison Fire Chief - Hugo Ferchau 970-641-8153
- Colorado Fish, Wildlife and Parks (Colorado State Wildlife Areas) - Brandon Diamond 970-275-4295, Nate Steward 303-236-4216
- BLM Range Allotments - Andrew Bryant 307-333-3344 or Tara Devalosis 970-275-6289
- NPS Curecanti National Recreation Area – Lori Rome 970-922-9216

Prepare/implement public information plan. The plan may include items such as the location of the information center; shelter locations for people and animals; advice on structure protection; air quality alerts; evacuation notices and updates; and information to other entities that may be impacted by the fire.

- USFS PAO - Kimberly Phillips 970-874-6717

Resources

1 Type 3/4 IC, 2 Wildland Fire Engines, 2 Type 21A Crews or Suppression Modules 1 Dozer, 1 Type 3 Helicopter, 1 Type 1 Helicopter

Management Action Point #10 (Beaver Creek)

Condition

Fire Crosses or is likely to cross MAP and has become established south, southwest, or west of MAP 10 and has moved out of the wilderness. Expected Fire behavior and weather indicate continued growth.

Actions

Review and update WFDSS decision, management action points, and other support documents.

Evaluate current and expected fire behavior. Mobilize resources and initiate appropriate suppression actions.

Evaluate incident organizational needs.

Review existing area closures and consider additional closures.

Notify CWP of threat to Gunnison Sage Grouse habitat and Centennial State Wildlife area, Beaver Creek Wildlife Areas.

Issue Pre-Evacuation notice Antelope Hills subdivision and Gunnison West.

Notify range permittees of the potential need to move cattle.

Notify cooperators and the public of the increase in fire activity and planned actions. Key Cooperators include:

- AA USFS - Curtis Keetch 970-366-0669
- AA DFPC - Luke Odom 970-773-4259
- AA Bureau of Land Management - District Manager Stephanie Connolly 970-216-5243, Field Manager Jon Kaminsky 970-456-8157
- USFS District Ranger - Dayle Funka 970-596-4854
- Gunnison County Sheriff - Adam Murdie 970-975-1777
- Gunnison County Emergency Manager - Scott Morrill 970-275-1370
- Gunnison Fire Chief - Hugo Ferchau 970-641-8153
- Colorado Fish, Wildlife and Parks (Colorado State Wildlife Areas) - Brandon Diamond 970-275-4295, Nate Steward 303-236-4216
- BLM Range Allotments - Andrew Bryant 307-333-3344 or Tara Devalosis 970-275-6289
- NPS Curecanti National Recreation Area – Lori Rome 970-922-9216
- Gunnison County Electric Association - John Stoeber 970-901-1691

Prepare/implement public information plan. The plan may include items such as the location of the information center; shelter locations for people and animals; advice on structure protection; air quality alerts; evacuation notices and updates; and information to other entities that may be impacted by the fire.

- USFS PAO - Kimberly Phillips 970-874-6717

Resources

1 ICT 3/4, 1 Type 3 helicopter, 3 Wildland Fire Engines, 2 Type 2 IA crew or Suppression Module, 1 Dozer

Management Action Point #11 (Steers Gulch)

Condition

Fire Crosses or is likely to cross MAP and has become established south, southwest, or west of MAP 11. Expected Fire behavior and weather indicate continued growth.

Actions

Review and update WFDSS decision, management action points, and other support documents.

Evaluate current and expected fire behavior. Mobilize resources and initiate appropriate suppression actions.

Evaluate incident organizational needs.

Review existing area closures and consider additional closures.

Begin evacuation of Antelope Hills subdivision and Gunnison West.

Notify CWP of threat to Centennial State Wildlife area, Beaver Creek

Notify range permittees of the potential need to move cattle.

Notify cooperators and the public of the increase in fire activity and planned actions. Key Cooperators include:

- AA USFS - Curtis Keetch 970-366-0669
- AA DFPC - Luke Odom 970-773-4259
- AA Bureau of Land Management - District Manager Stephanie Connolly 970-216-5243, Field Manager Jon Kaminsky 970-456-8157
- USFS District Ranger - Dayle Funka 970-596-4854
- Gunnison County Sheriff - Adam Murdie 970-975-1777
- Gunnison County Emergency Manager - Scott Morrill 970-275-1370
- Gunnison Fire Chief - Hugo Ferchau 970-641-8153
- Colorado Fish, Wildlife and Parks (Colorado State Wildlife Areas) - Brandon Diamond 970-275-4295, Nate Steward 303-236-4216
- BLM Range Allotments - Andrew Bryant 307-333-3344 or Tara Devalosis 970-275-6289
- NPS Curecanti National Recreation Area – Lori Rome 970-922-9216
- Gunnison County Electric Association - John Stoeber 970-901-1691

Prepare/implement public information plan. The plan may include items such as the location of the information center; shelter locations for people and animals; advice on structure protection; air quality alerts; evacuation notices and updates; and information to other entities that may be impacted by the fire.

- USFS PAO - Kimberly Phillips 970-874-6717

Resources

1 ICT 3/4, 1 Type 3 helicopter, 1 Type 1 Helicopter, 5 Wildland Fire Engines, 2 Type 2 IA crews or Suppression Module, 2 Dozers

Management Action Point #12 (East Elk)

Condition

Fire Crosses or is likely to cross MAP and has become established south, southwest, or southeast of MAP 12. Expected Fire behavior and weather indicate continued growth.

Actions

Review and update WFDSS decision, management action points, and other support documents.

Evaluate current and expected fire behavior. Mobilize resources and initiate appropriate suppression actions.

Evaluate incident organizational needs.

Review existing area closures and consider additional closures.

Begin evacuation for the NPS Blue Mesa North Campgrounds.

Notify CWP of threat to Sapinero State Wildlife area, Centennial State Wildlife, Welt Ranch, and 4C Ranch.

Notify range permittees of the potential need to move cattle.

Notify cooperators and the public of the increase in fire activity and planned actions. Key Cooperators include:

- AA USFS - Curtis Keetch 970-366-0669
- AA DFPC - Luke Odom 970-773-4259
- AA Bureau of Land Management - District Manager Stephanie Connolly 970-216-5243, Field Manager Jon Kaminsky 970-456-8157
- USFS District Ranger - Dayle Funka 970-596-4854
- Gunnison County Sheriff - Adam Murdie 970-975-1777
- Gunnison County Emergency Manager - Scott Morrill 970-275-1370
- Gunnison Fire Chief - Hugo Ferchau 970-641-8153
- Colorado Fish, Wildlife and Parks (Colorado State Wildlife Areas) - Brandon Diamond 970-275-4295, Nate Steward 303-236-4216
- BLM Range Allotments - Andrew Bryant 307-333-3344 or Tara Devalosis 970-275-6289
- NPS Curecanti National Recreation Area – Lori Rome 970-922-9216
- Gunnison County Electric Association - John Stoeber 970-901-1691

Prepare/implement public information plan. The plan may include items such as the location of the information center; shelter locations for people and animals; advice on structure protection; air quality alerts; evacuation notices and updates; and information to other entities that may be impacted by the fire.

- USFS PAO - Kimberly Phillips 970-874-6717

Resources

1 ICT 3/4, 1 Type 1 helicopter, 1 Type 3 Helicopter, 5 Wildland Fire Engines, 2 Type 2 IA crew or Suppression Module, 2 Dozers

Management Action Point #13 (Burnout Squirrel Creek)

Condition

Fire Crosses or likely to cross MAP and has become established. Expected Fire behavior and weather indicate continued growth and advancement to the north, south and/or west.

Actions

Evaluate current and expected fire behavior. Mobilize resources and initiate appropriate suppression actions.

Notify cooperators and the public of the increase in fire activity and planned actions. Key Cooperators include:

- AA USFS - Curtis Keetch 970-366-0669
- AA DFPC - Luke Odom 970-773-4259
- USFS District Ranger - Dayle Funka 970-596-4854
- Gunnison County Emergency Manager - Scott Morrill 970-275-1370

Prepare/implement public information plan. The plan may include items such as forest health ecology and firefighter safety; air quality alerts; and information to other entities that may be impacted by the fire.

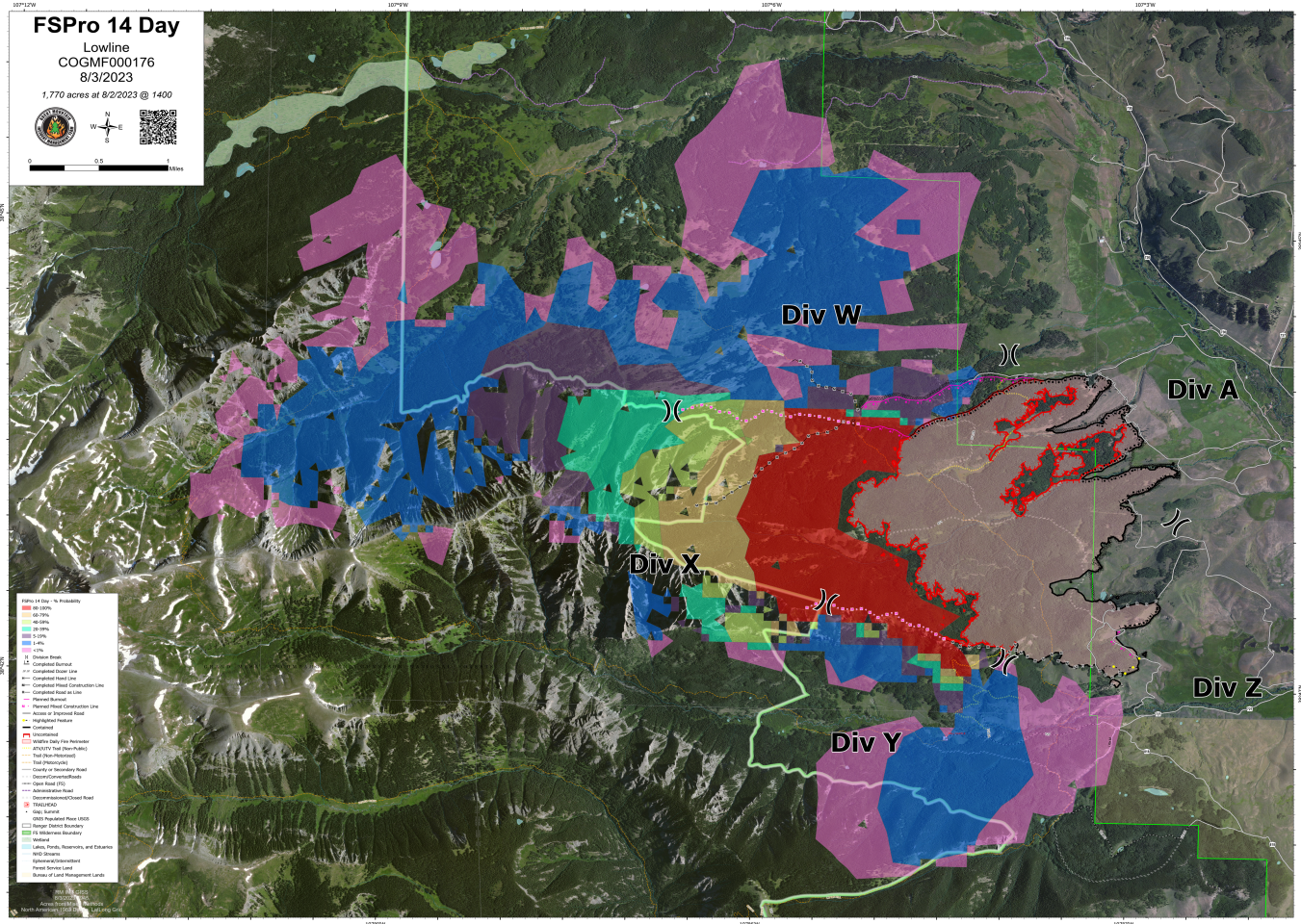
- USFS PAO - Kimberly Phillips 970-874-6717

Resources

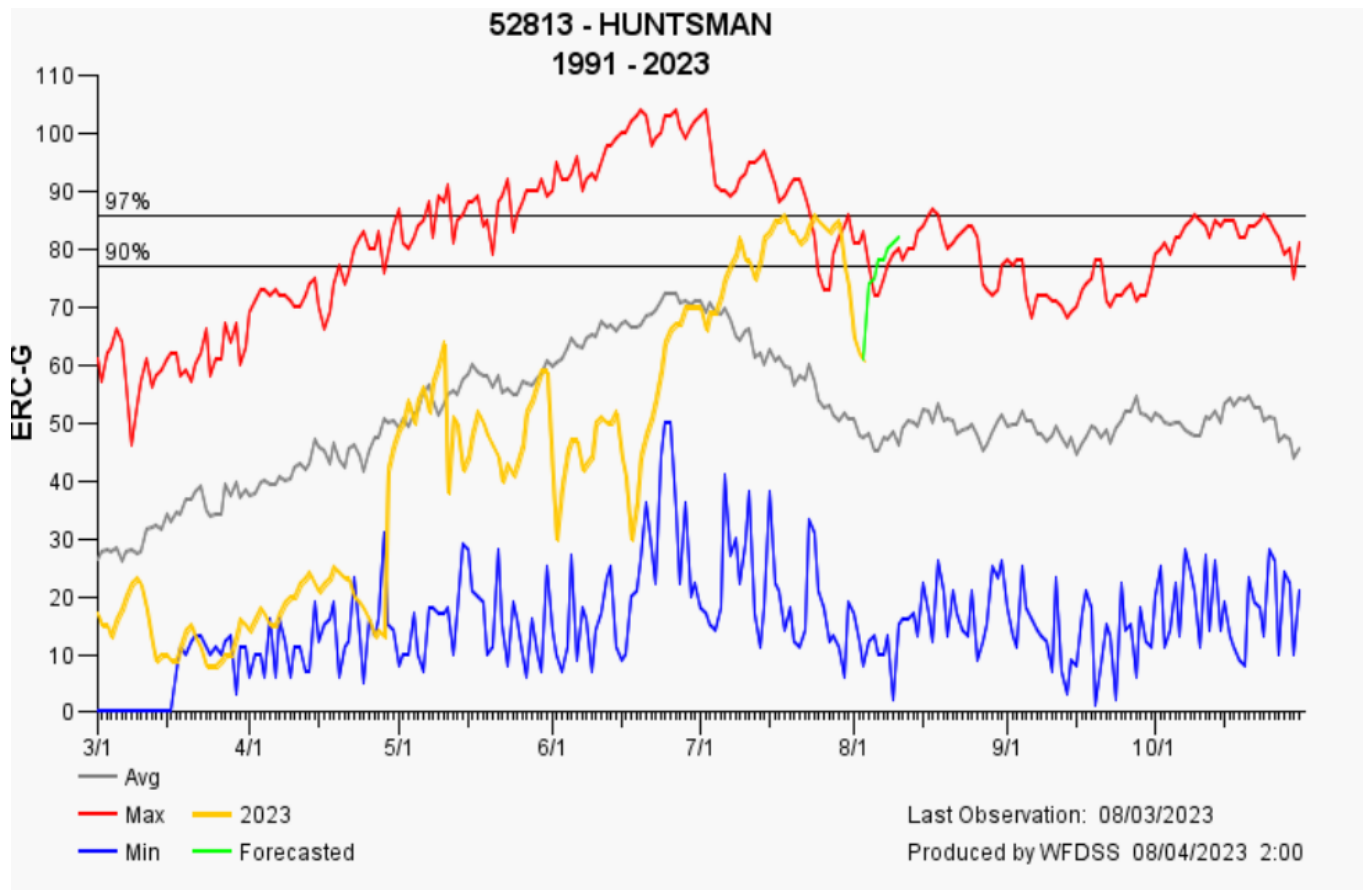
1 Type 3/4 IC, 2 Wildland Fire Engines, 2 Type 2IA Crews or Suppression Modules, 1 Type 3 Helicopter w/PSD, 1 Type 1 Helicopter

Expected Future Fire Behavior and Growth

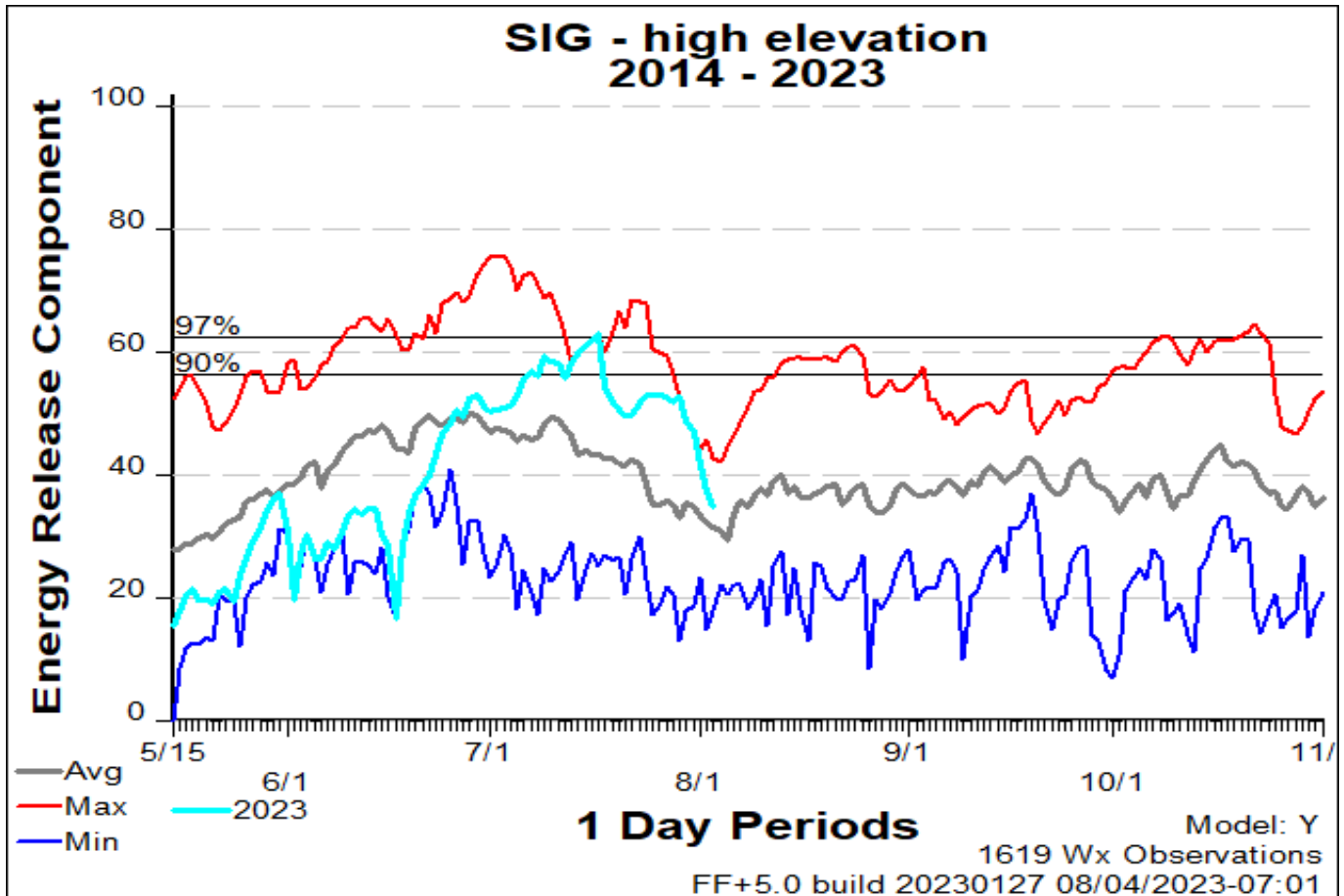
FSPro 14 Day



ERC Huntsman

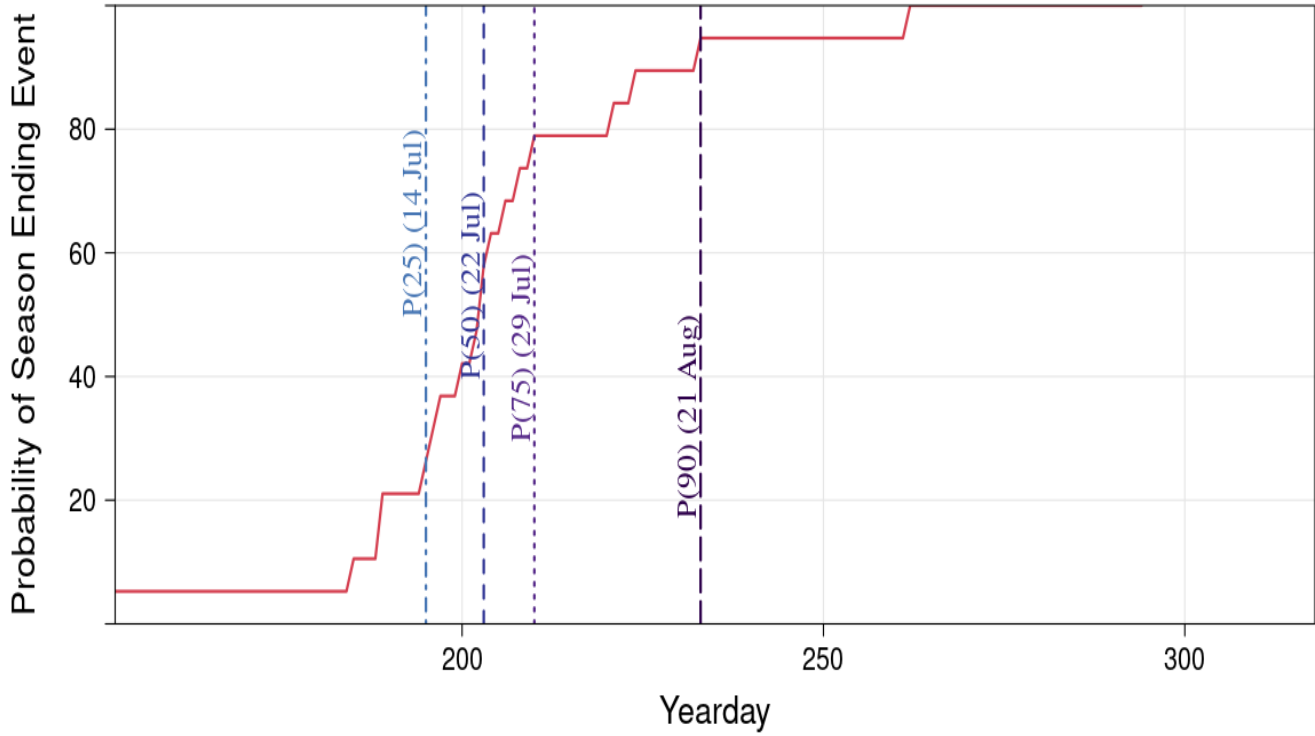


ERC High Elevation SIG

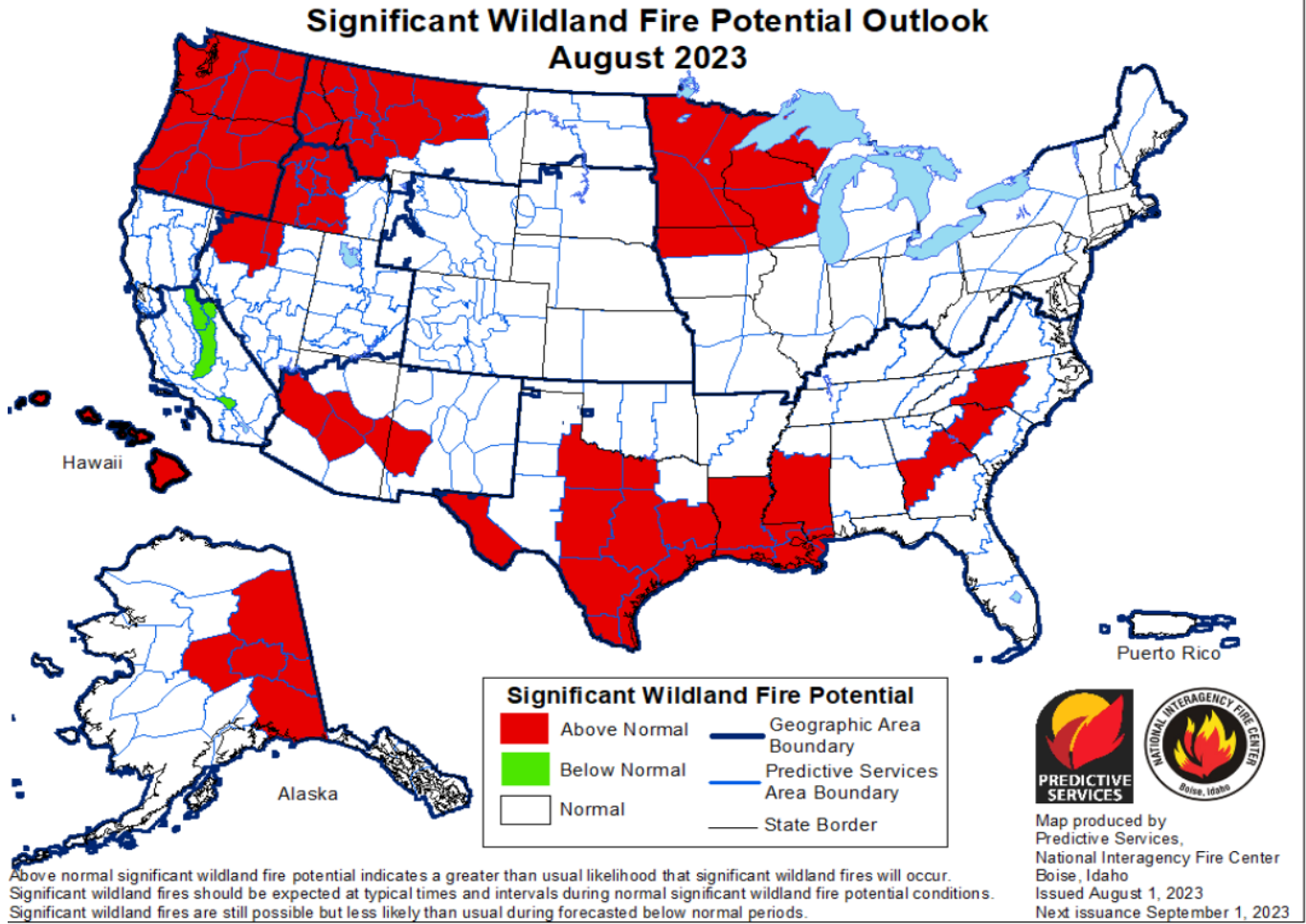


Probability of Season Ending Event

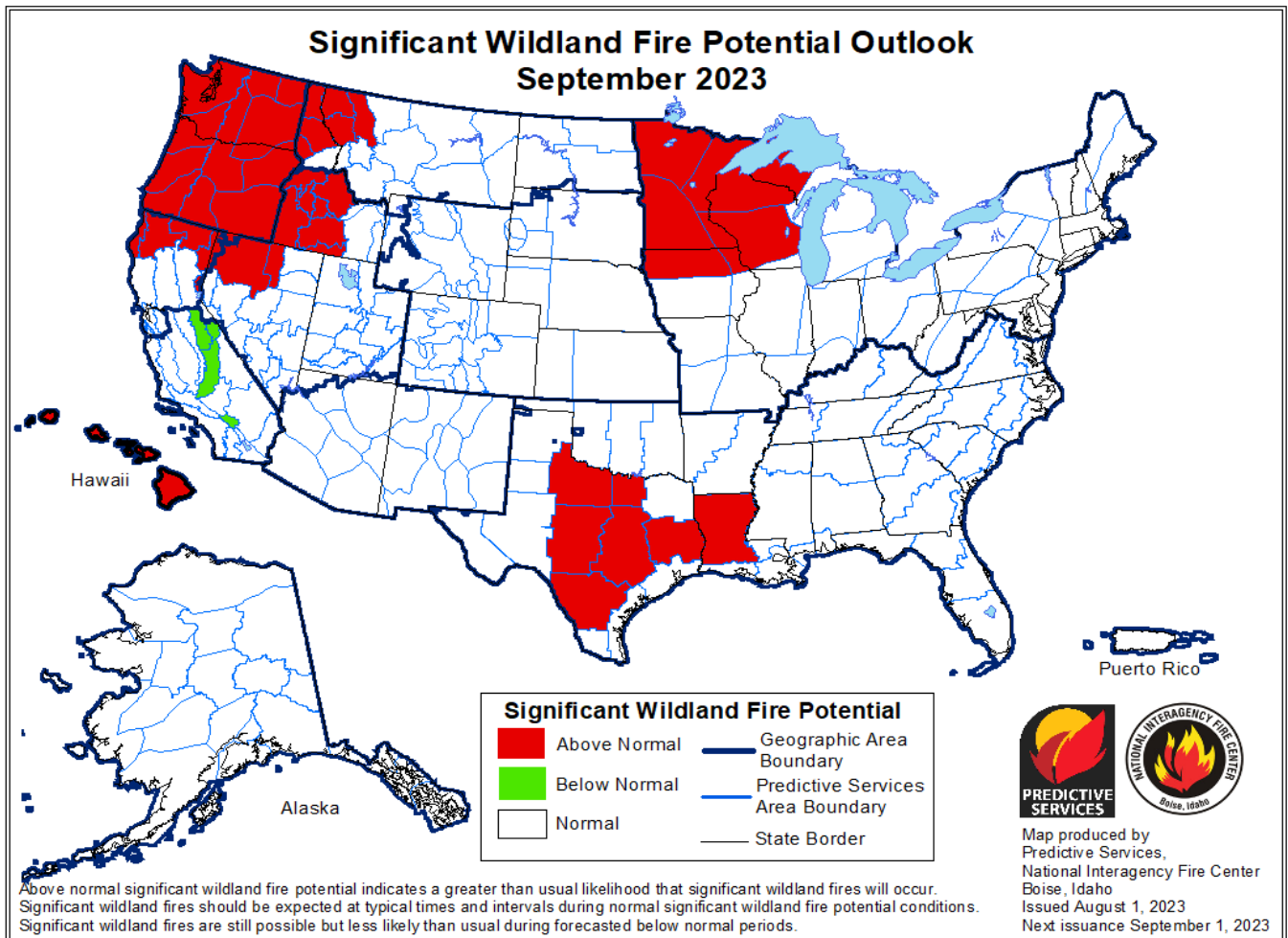
Lowline



Significant Wildland Fire Potential Outlook August 2023

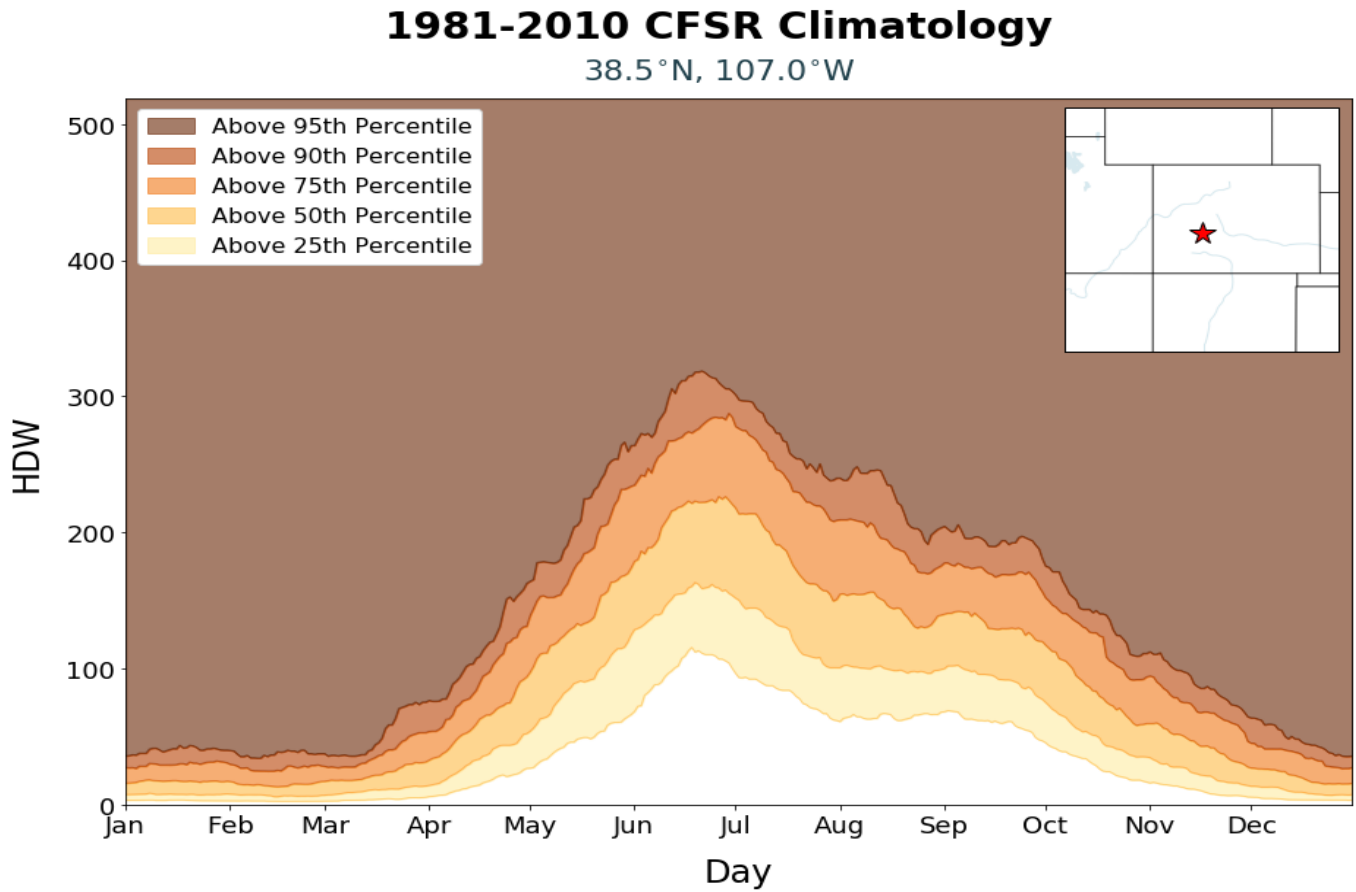


Significant Wildland Fire Potential Outlook September 2023



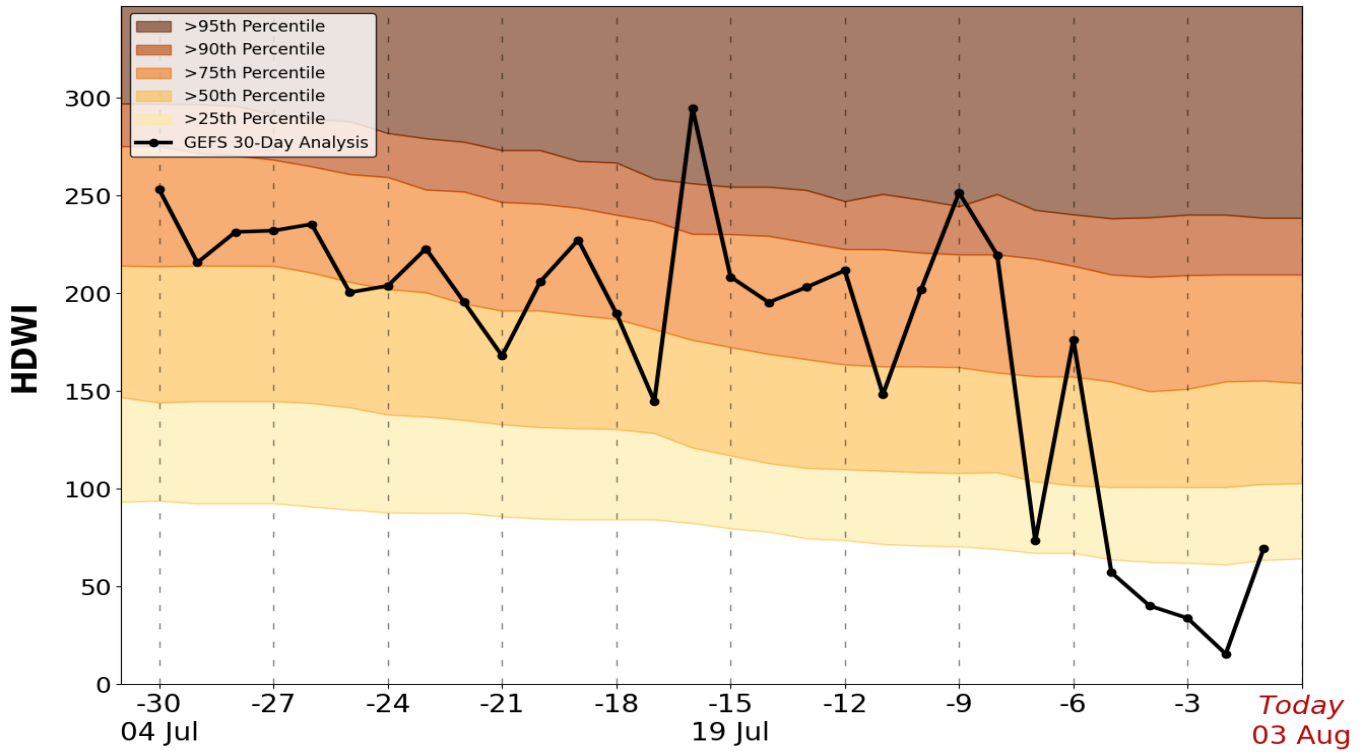
Climatology

Heat Dryness Wind Index 1981-2010 CFSR Climatology



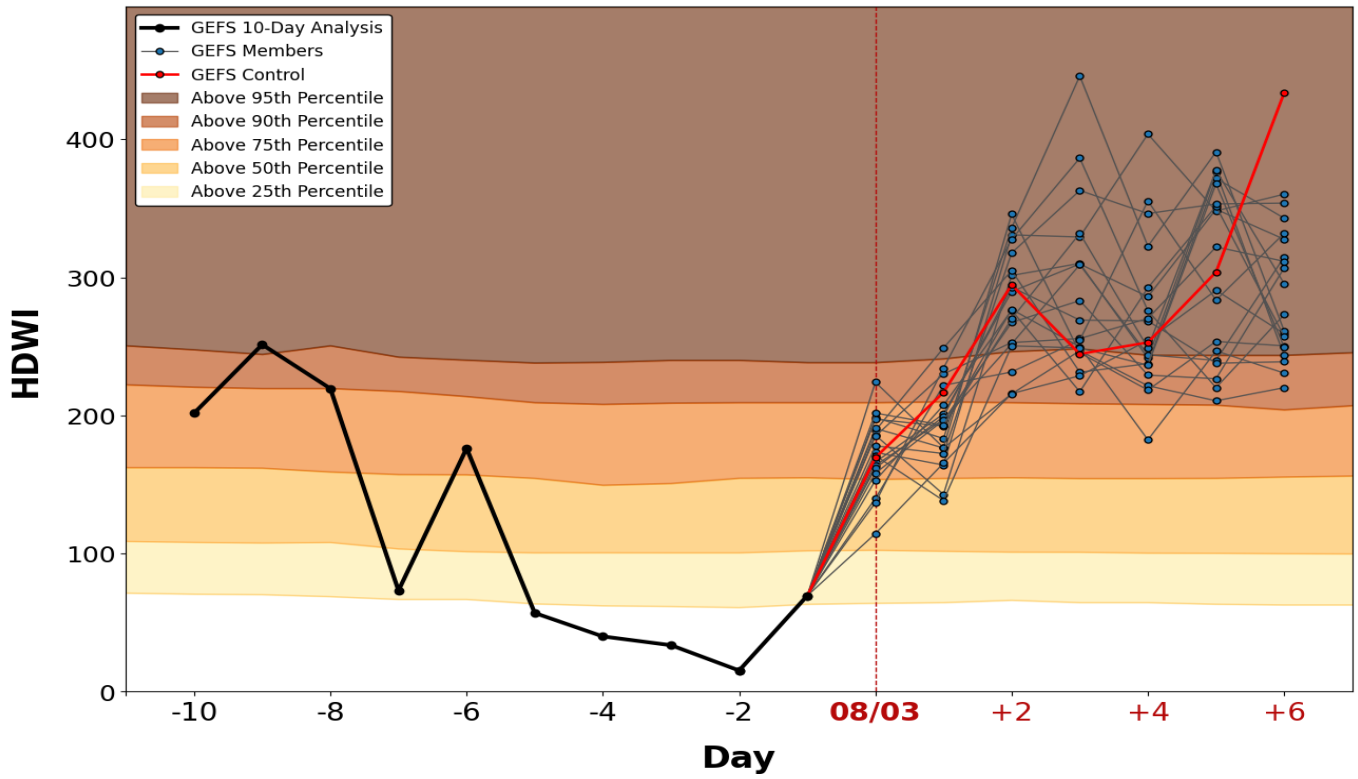
Max Daily HDWI 30-Day Archive

Max Daily HDWI 30-Day Archive GEFS Analysis & 1981-2010 CFSR Climatology 38.5° N, 107.0° W



Max Daily HDWI

Max Daily HDWI
GEFS Analysis and Forecast & 1981-2010 CFSR Climatology
38.5° N, 107.0° W



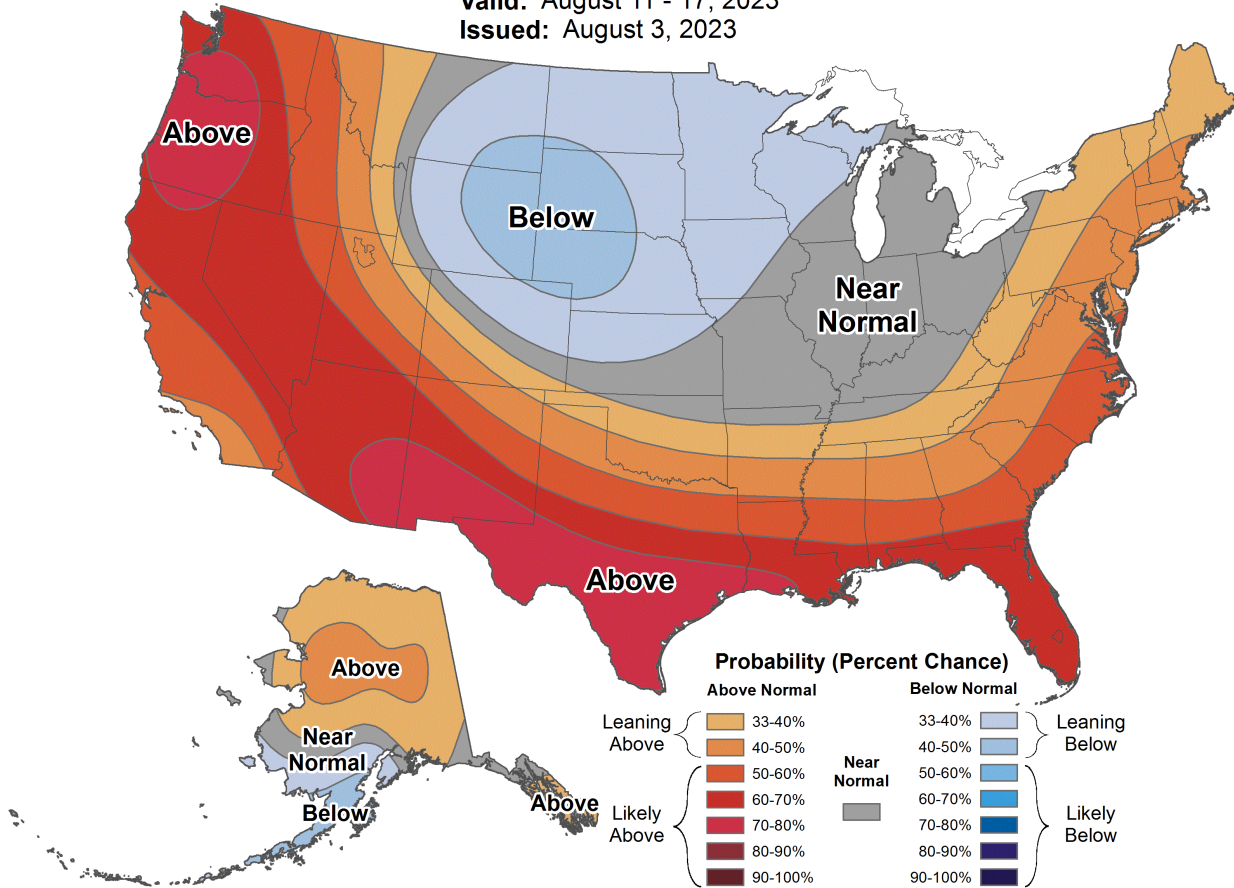
8-14 Day Temperature Outlook



8-14 Day Temperature Outlook



Valid: August 11 - 17, 2023
Issued: August 3, 2023



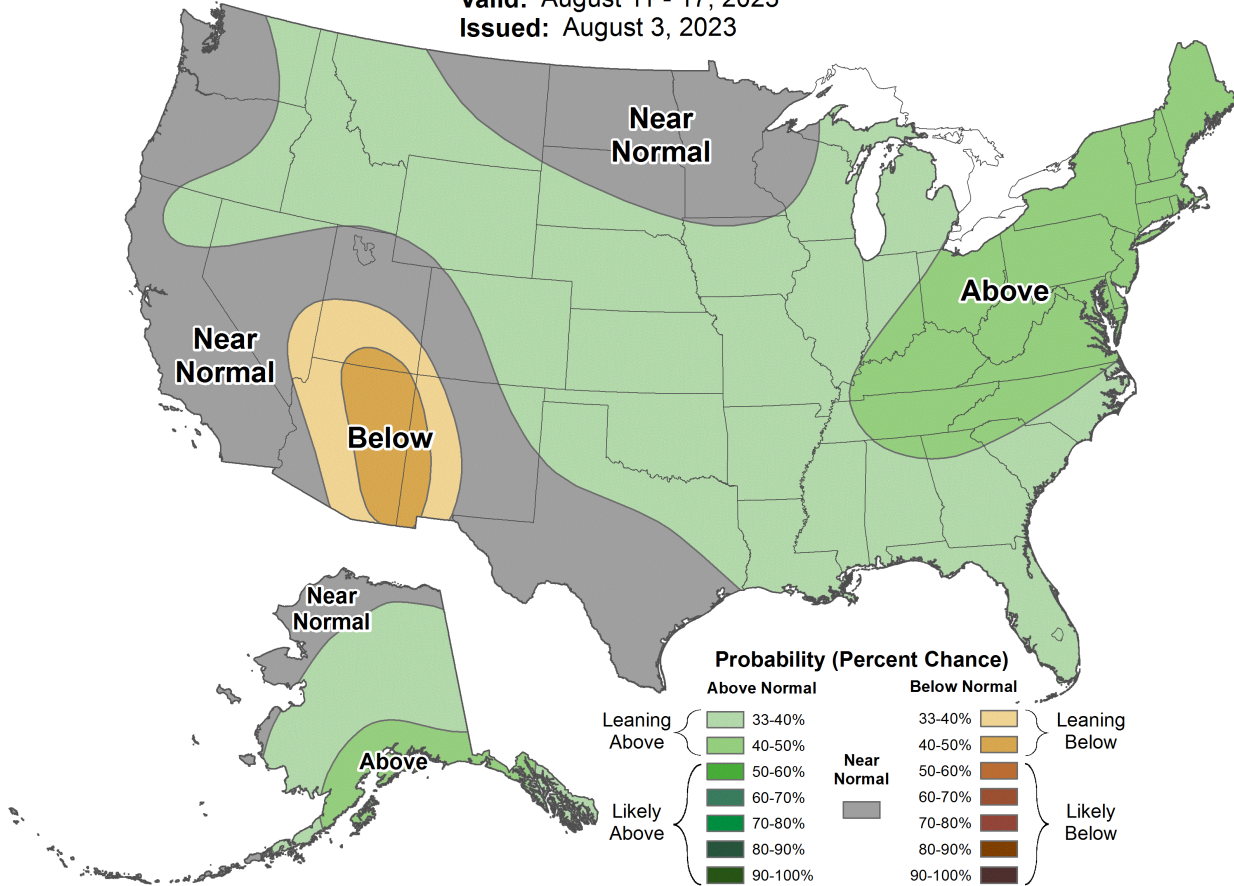
8-14 Day Precipitation Outlook



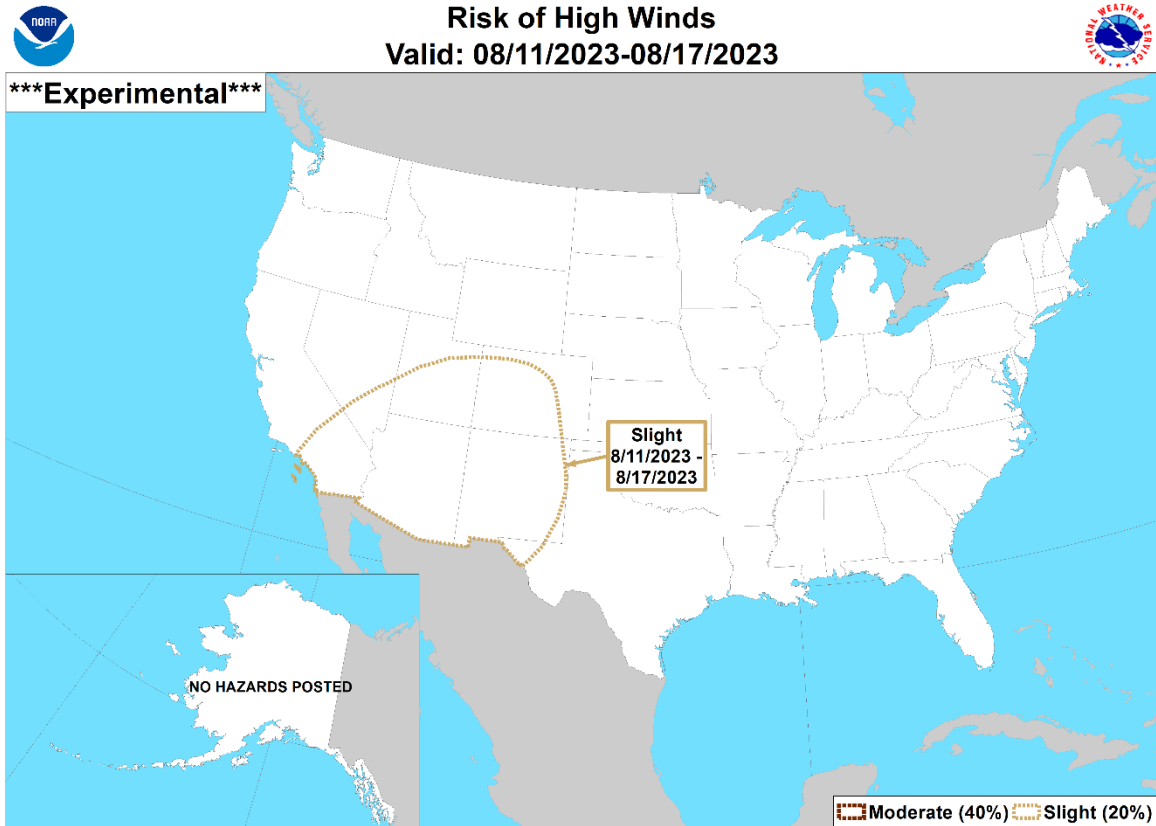
8-14 Day Precipitation Outlook



Valid: August 11 - 17, 2023
Issued: August 3, 2023



Risk of High Hinds

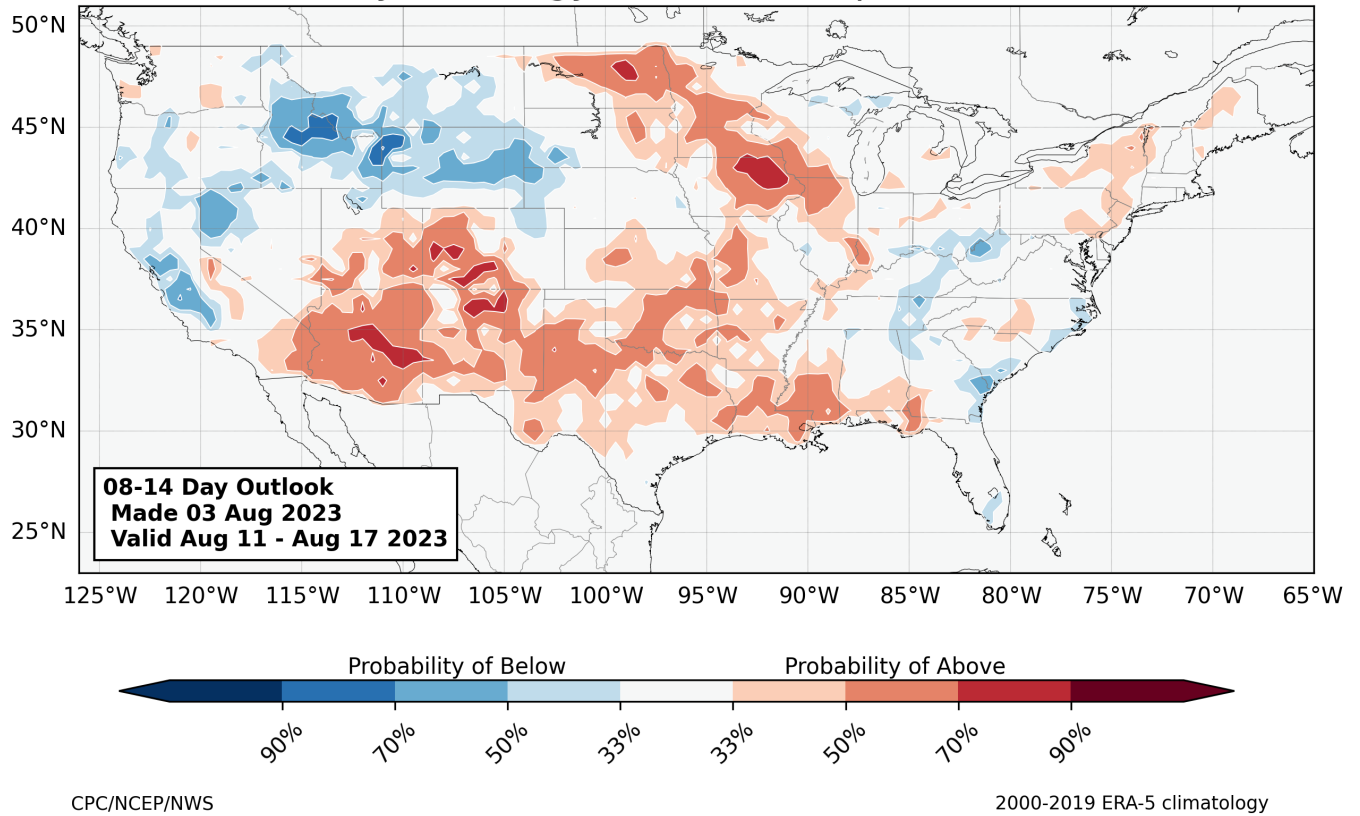


Climate Prediction Center
Made: 08/03/2023 3PM EDT

Follow us:  
www.cpc.ncep.noaa.gov

Probabilities of Energy Release Component Anomalies

Probability of Energy Release Component anomalies

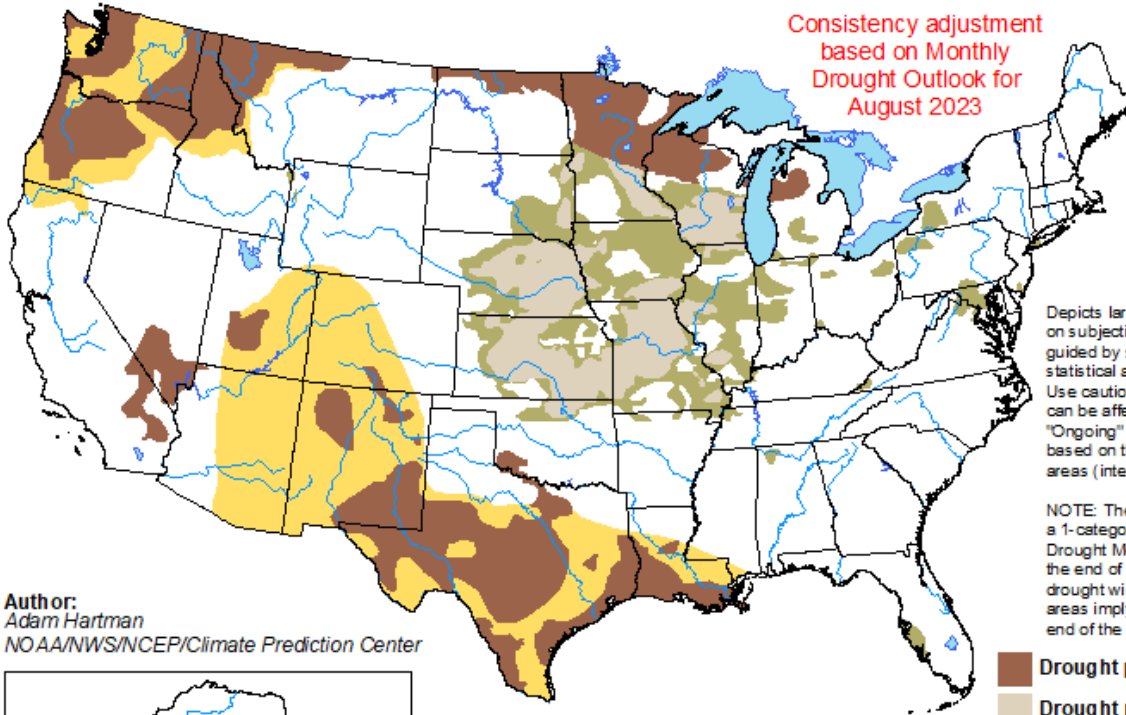


U.S. Seasonal Drought Outlook

U.S. Seasonal Drought Outlook Drought Tendency During the Valid Period

Valid for August 1 - October 31, 2023
Released July 31, 2023



Consistency adjustment
based on Monthly
Drought Outlook for
August 2023

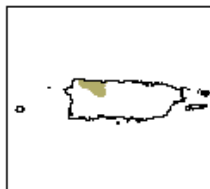
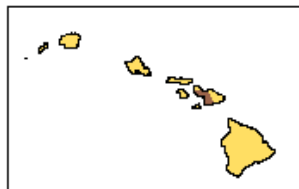
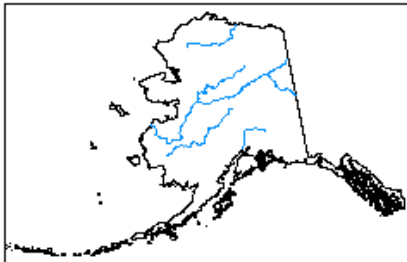


Depicts large-scale trends based on subjectively derived probabilities guided by short- and long-range statistical and dynamical forecasts. Use caution for applications that can be affected by short lived events. "Ongoing" drought areas are based on the U.S. Drought Monitor areas (intensities of D1 to D4).

NOTE: The tan areas imply at least a 1-category improvement in the Drought Monitor intensity levels by the end of the period, although drought will remain. The green areas imply drought removal by the end of the period (D0 or none).

Author:
Adam Hartman
NOAA/NWS/NCEP/Climate Prediction Center

-  Drought persists
-  Drought remains but improves
-  Drought removal likely
-  Drought development likely



<http://go.usa.gov/3eZ73>