

Management Action Points

Lowline
COGMF000176

8/6/2023

1,821 acres at 8/5/2023 @ 2111 hrs



Management Action Point #1 (Wilderness Streams)

Condition

Fire Crosses or is likely to cross MAP and has become established North of MAP 1. Expected Fire behavior and weather indicate continued growth and advancement towards the structures in Wilderness Springs.

Actions

Review and update WFDSS decision, management action points and other support documents.

Determine the need for trail, road, and area closures.

Evaluate incident organizational needs.

Evaluate hazards, risk, and probability of success of suppression options and initiate appropriate actions to contain and control advancing fire to protect the structures and private inholdings in the sub-division of Wilderness Streams.

Mobilize resources and initiate structure protection plans.

Notify cooperators and public of increase in fire activity and planned actions. Key Cooperators include:

- AA USFS – Curtis Keetch 970-366-0669
- AA DFPC - Luke Odom 970-773-4259
- AA Bureau of Land Management - District Manager Stephanie Connolly 970-216-5243, Field Manager Jon Kaminsky 970-456-8157
- USFS District Ranger - Dayle Funka 970-596-4854
- Gunnison County Sheriff - Adam Murdie 970-975-1777
- Gunnison County Emergency Manager - Scott Morrill 970-275-1370
- Gunnison Fire Chief - Hugo Ferchau 970-641-8153
- Castleton Ranch Manager - Craig Jackson (General Manager) 970-596-8770
- Gunnison County Electric Association - John Stoerber 970-901-1691

Coordinate with County sheriffs and emergency operation managers on the need for pre-evacuation and mandatory evacuation notices for the residences in Wilderness Streams.

Prepare/implement public information plan. The plan may include items such as the location of the information center; shelter locations for people and animals; advice on structure protection; air quality alerts; evacuation notices and updates; and information to other entities that may be impacted by the fire.

- USFS PAO - Kimberly Phillips 970-874-6717

Resources

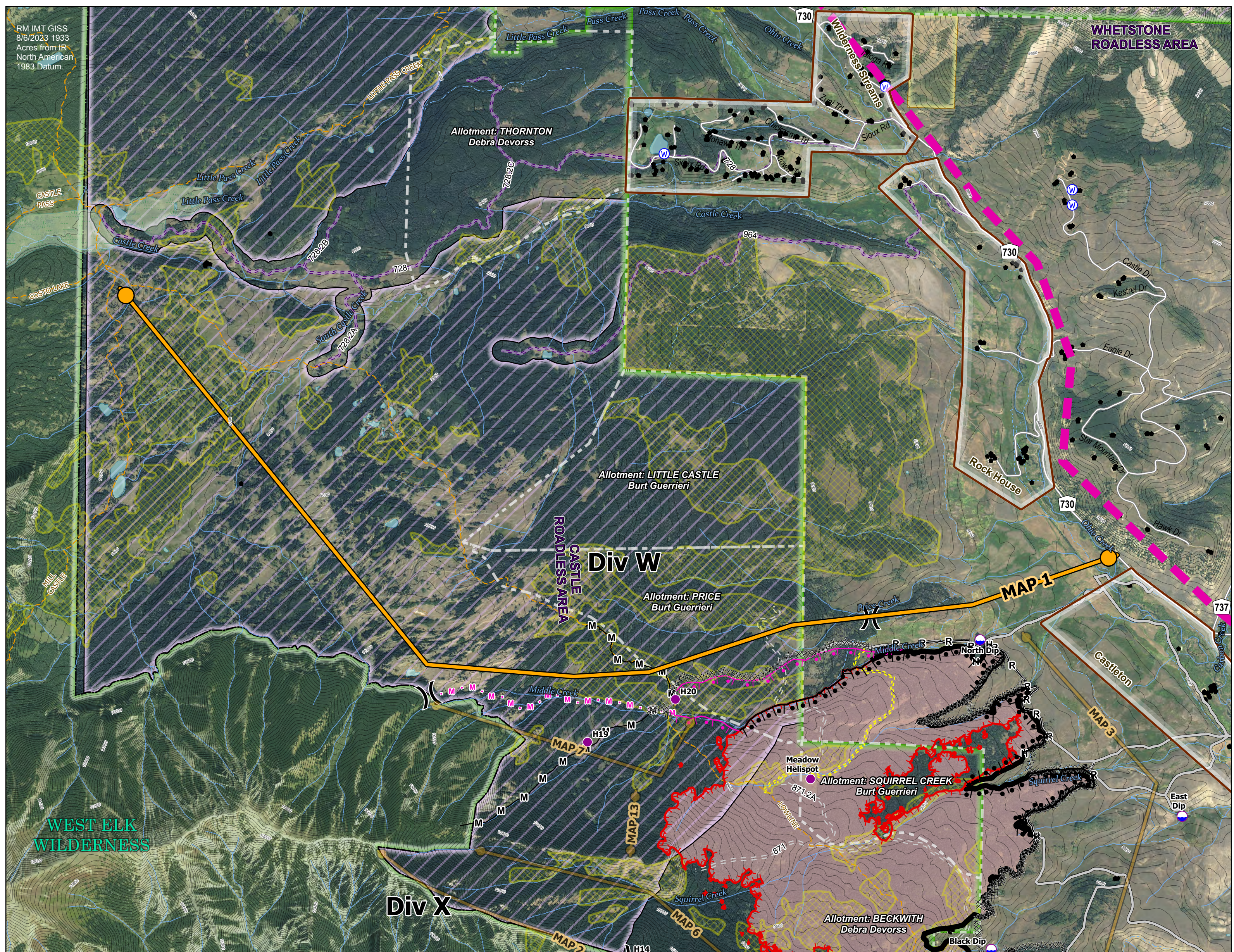
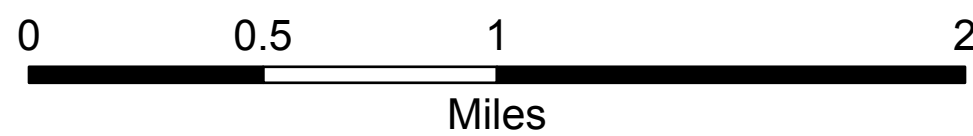
1 Type 3 IC, 2 Wildland Fire Engines, 2 Type 2IA Crews or Suppression Modules 1 Dozer, 1 Type 3 Helicopter, 1 Type 1 Helicopter

Incident Features

- Management Action Point
- Dip Site
- Helispot
-) (Division Break
- ⊙ Water Source
- ▬ Contained
- ▬ Uncontained
- ▬ Completed Burnout
- XXXX Completed Dozer Line
- H— Completed Hand Line
- M— Completed Mixed Construction Line
- R— Completed Road as Line
- Planned Burnout
- M . Planned Mixed Construction Line
- Access or Improved Road
- ▬ Wildfire Daily Fire Perimeter
- ▬ Planning Area
- ▬ Aspen

Reference Features

- StructurePoints
- ATV/UTV Trail (Non-Public)
- Trail (Non-Motorized)
- Administrative Road
- Decommissioned/Closed Road
- ▬ Community Unit
- ▬ Grazing Allotments
- ▬ Colorado Roadless Area
- ▬ FS Wilderness
- ▬ Bureau of Land Management
- ▬ US Forest Service
- ▬ Aspen



RM IMT GISS
8/6/2023 1933
Acres from 1R
North American
1983 Datum.