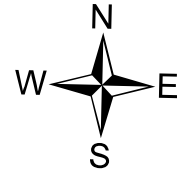


Management Action Points

Lowline
COGMF000176

8/6/2023

1,821 acres at 8/5/2023 @ 2111 hrs



Management Action Point #2 (Mill Creek West)

Condition

Fire Crosses or likely to cross MAP and has become established south, and southwest of MAP. Expected Fire behavior and weather indicate continued growth and advancement toward the structures in Mill Creek West.

Actions

Review and update WFDSS decision, management action points, and other support documents.

Notify the Antelope timber sale contractor of the threat and possibility of needing to move equipment.

Evaluate hazards, risks, and probability of success of suppression options and initiate appropriate actions to contain and control advancing fire to protect the structures and private inholdings in Mill Creek West

Mobilize resources and initiate structure protection plans. Ensure Pumps, Hose and Sprinkler kits are operational.

Determine the need for trail, road, and area closures.

Evaluate incident organizational needs.

Notify cooperators and the public of the increase in fire activity and planned actions. Key Cooperators include:

- AA USFS - Curtis Keetch 970-366-0669
- AA DFPC - Luke Odum 970-773-4259
- AA Bureau of Land Management - District Manager Stephanie Connolly 970-216-5243, Field Manager Jon Kaminsky 970-456-8157
- USFS District Ranger - Dayle Funka 970-596-4854
- Gunnison County Sheriff - Adam Murdie 970-975-1777
- Gunnison County Emergency Manager - Scott Morrill 970-275-1370
- Gunnison Fire Chief - Hugo Ferchau 970-641-8153
- Gunnison County Electric Association - John Stoeber 970-901-1691

Coordinate with County sheriffs and emergency operation managers on the need for pre-evacuation and mandatory evacuation notices for the residences in Mill Creek West.

Prepare/implement public information plan. The plan may include items such as the location of the information center; shelter locations for people and animals; advice on structure protection; air quality alerts; evacuation notices and updates; and information to other entities that may be impacted by the fire.

- USFS PAO - Kimberly Phillips 970-874-6717

Resources

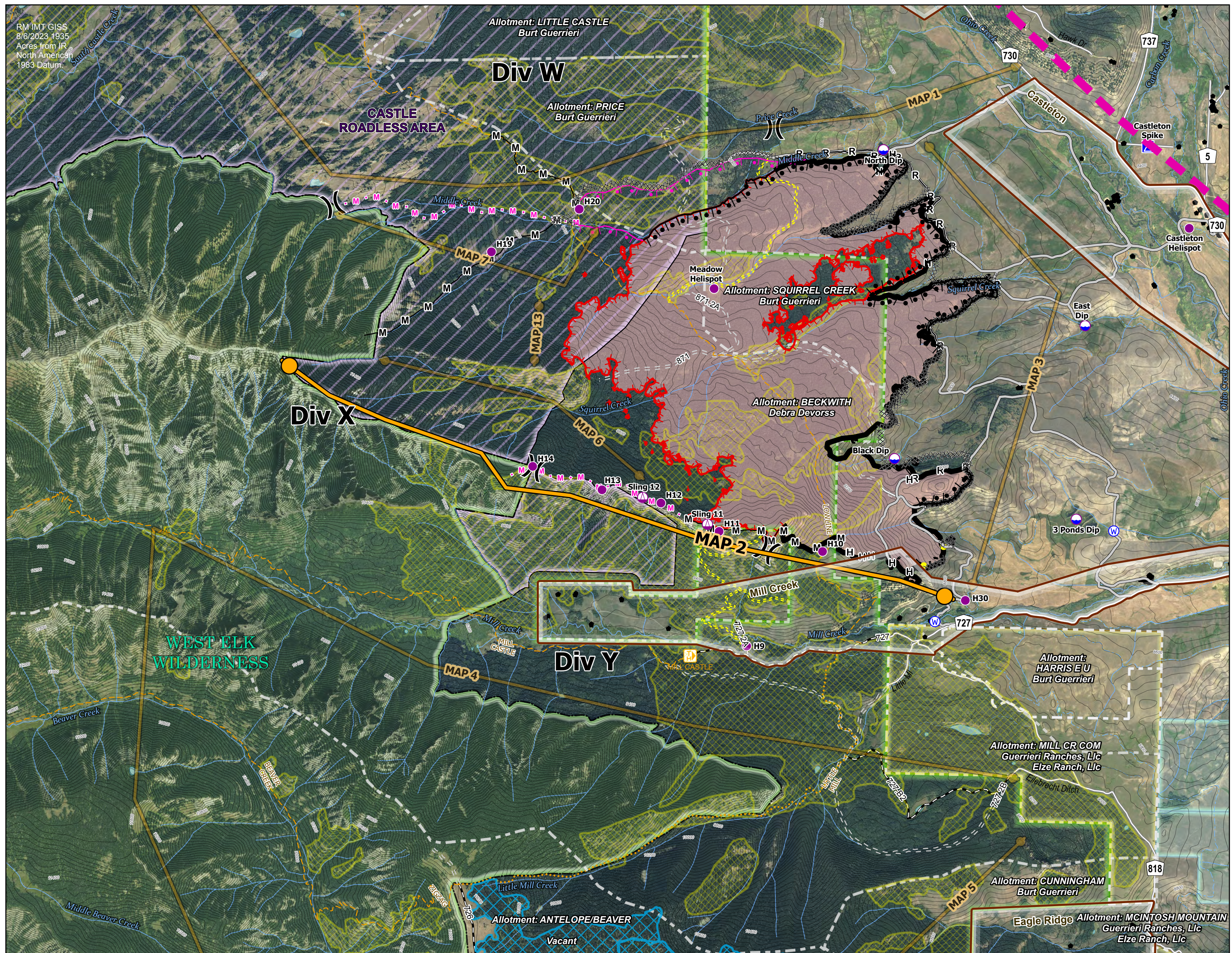
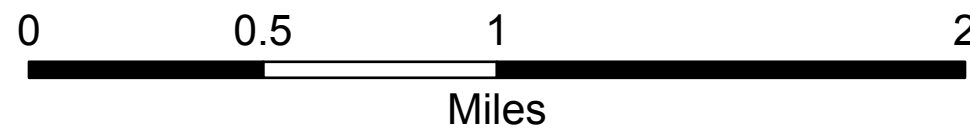
1 Type 3/4 IC, 2 Wildland Fire Engines, 2 Type 2IA Crews or Suppression Modules 1 Dozer, 1 Type 3 Helicopter, 1 Type 1 Helicopter

Incident Features

- Management Action Point
- Dip Site
- Helispot
- ⊖ Sling Site
-) (Division Break
- ⊠ Camp
- ⊕ Water Source
- ▬ Contained
- ▬ Uncontained
- ⊠ Completed Burnout
- ⊠ Completed Dozer Line
- H— Completed Hand Line
- M— Completed Mixed Construction Line
- R— Completed Road as Line
- Planned Burnout
- M . Planned Mixed Construction Line
- Access or Improved Road
- Highlighted Feature
- ▬ Wildfire Daily Fire Perimeter
- ▬ Planning Area
- ▬ Aspen

Reference Features

- StructurePoints
- ⊠ Trailhead
- ⋯⋯⋯ ATV/UTV Trail (Non-Public)
- ⋯⋯⋯ Trail (Non-Motorized)
- ⋯⋯⋯ Trail (Motorcycle)
- Open Road (FS)
- Decommissioned/Closed Road
- ▬ Community Unit
- ▬ Antelope Timber Sale
- ▬ Grazing Allotments
- ▬ Colorado Roadless Area
- ▬ FS Wilderness
- ▬ Bureau of Land Management
- ▬ US Forest Service
- ▬ Aspen



RM IMT GISS
8/6/2023 1935
Acres from IR
North American
1983 Datum