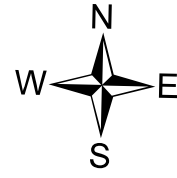


Management Action Points

Lowline
COGMF000176

8/6/2023

1,821 acres at 8/5/2023 @ 2111 hrs



Management Action Point #5 (Sage Grouse)

Condition

Fire Crosses or is likely to cross MAP and has become established east of MAP 5. Expected Fire behavior and weather indicate continued growth and advancement toward the subdivisions of Eagle Ridge and Castle Mountain.

Actions

Review and update WFDSS decision, complexity analysis, and management action points.

Evaluate hazards, risks, and probability of success of suppression options and initiate appropriate actions to contain and control advancing fire to protect the structures and private inholdings in the sub-divisions of Eagle Ridge and Castle Mountain.

Evaluate fire growth and threat to the subdivision of Eagle Ridge, Castle Mountain, sage grouse habitat, private inholdings, and agricultural land.

Implement evacuation plan for Eagle Ridge and Castle Mountain.

Notify Colorado Wildlife and Parks of the threat to Gunnison Sage Grouse habitat.

Notify cooperators and the public of the increase in fire activity and planned actions. Key Cooperators include:

- AA USFS - Curtis Keetch 970-366-0669
- AA DFPC - Luke Odom 970-773-4259
- AA Bureau of Land Management - District Manager Stephanie Connolly 970-216-5243, Field Manager Jon Kaminsky 970-456-8157
- USFS District Ranger - Dayle Funka 970-596-4854
- Gunnison County Sheriff - Adam Murdie 970-975-1777
- Gunnison County Emergency Manager - Scott Morrill 970-275-1370
- Gunnison Fire Chief - Hugo Ferchau 970-641-8153
- Colorado Fish, Wildlife and Parks (Colorado State Wildlife Areas) - Brandon Diamond 970-275-4295, Nate Steward 303-236-4216
- Gunnison County Electric Association - John Stoeber 970-901-1691

Prepare/implement public information plan. The plan may include items such as the location of the information center; shelter locations for people and animals; advice on structure protection; air quality alerts; evacuation notices and updates; and information to other entities that may be impacted by the fire.

- USFS PAO - Kimberly Phillips 970-874-6717

Resources

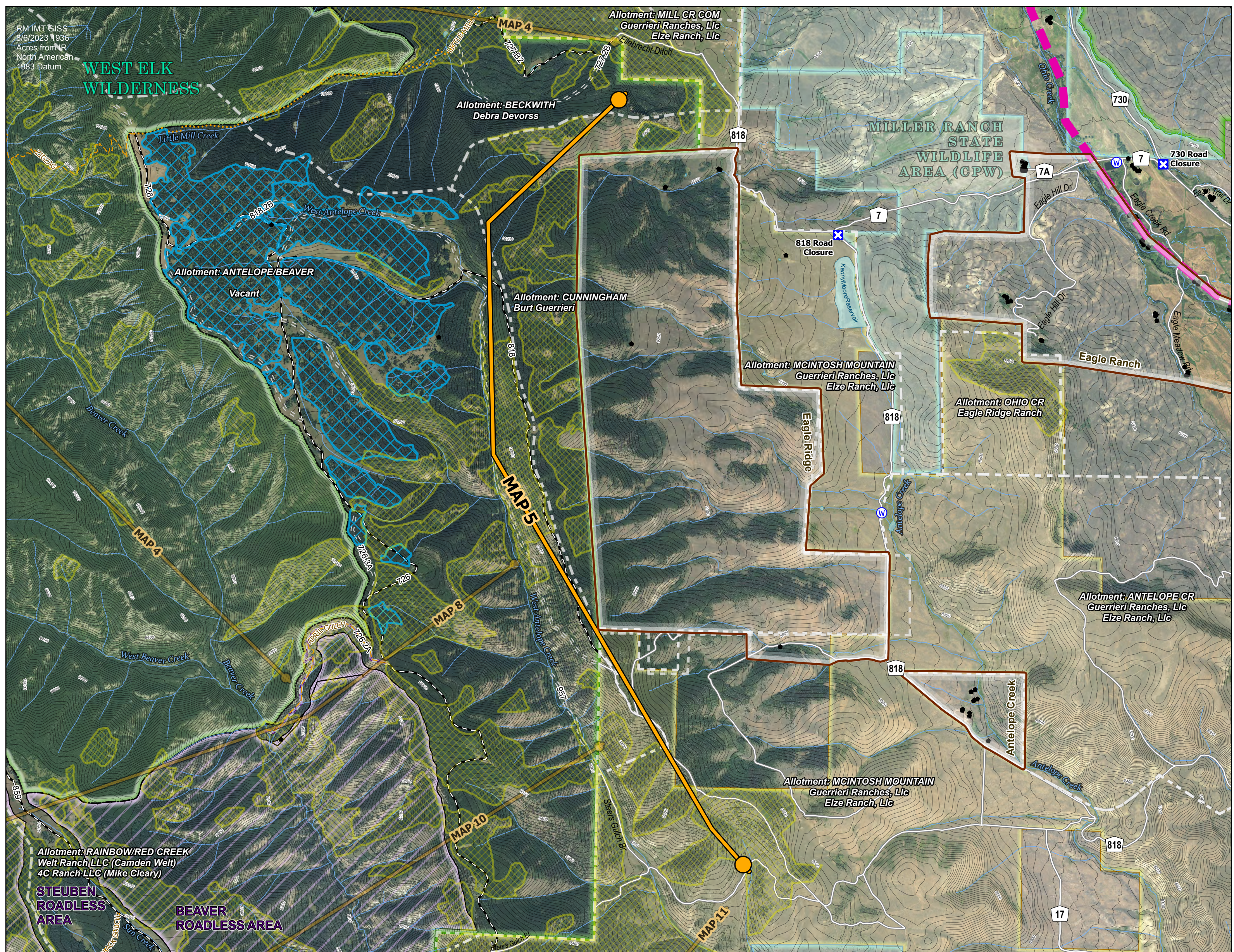
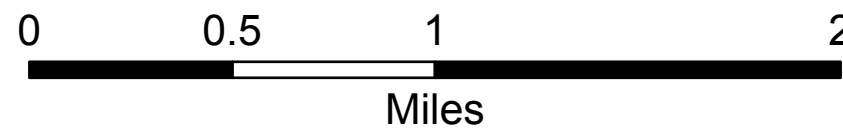
1 Type 3/4 IC, 2 Wildland Fire Engines, 2 Type 2IA Crews or Suppression Modules, 1 Dozer, 1 Type 3 Helicopter, 1 Type 1 Helicopter

Incident Features

- Management Action Point
- ✕ Closure
- ⊙ Water Source
- ⊡ Planning Area
- ⊠ Aspen

Reference Features

- StructurePoints
- - - Trail (Non-Motorized)
- ⋯ Trail (Motorcycle)
- ⋯⋯ Trail (ATV)
- Open Road (FS)
- - - Administrative Road
- - - Decommissioned/Closed Road
- ⊡ Community Unit
- ⊡ Antelope Timber Sale
- ⊡ Grazing Allotments
- ⊡ Colorado Roadless Area
- ⊡ FS Wilderness
- ⊡ Bureau of Land Management
- ⊡ State
- ⊡ US Forest Service
- ⊠ Aspen



RM 11MT 51SS
8/6/2023 1936
Acres from NR
North American
1983 Datum

Allotment: RAINBOW/RED CREEK
Welt Ranch LLC (Camden Welt)
4C Ranch LLC (Mike Cleary)

STEUBEN ROADLESS AREA

BEAVER ROADLESS AREA