

Management Action Points

Lowline
COGMF000176

8/6/2023

1,821 acres at 8/5/2023 @ 2111 hrs



Management Action Point #6 (Squirrel Creek)

Condition

Fire Crosses or is likely to cross MAP and has become established south, southwest or southeast of MAP 6. Expected fire behavior and weather indicate continued growth and advancement towards the indirect line on the South Ridge in Division Y.

Actions

Evaluate current and expected fire behavior. Mobilize resources to Division Yankee and If needed Initiate burnout operations along the ridge line to the wilderness boundary.

Notify cooperators and public of increase in fire activity and planned actions. Key Cooperators include:

- AA USFS - Curtis Keetch 970-366-0669
- AA DFPC - Luke Odom 970-773-4259
- AA Bureau of Land Management - District Manager Stephanie Connolly 970-216-5243, Field Manager Jon Kaminsky 970-456-8157
- USFS District Ranger - Dayle Funka 970-596-4854
- Gunnison County Sheriff - Adam Murdie 970-975-1777
- Gunnison County Emergency Manager - Scott Morrill 970-275-1370
- Gunnison Fire Chief - Hugo Ferchau 970-641-8153

Prepare/implement public information plan. The plan may include items such as the location of the information center; air quality alerts; and information to other entities that may be impacted by the fire.

- USFS PAO - Kimberly Phillips 970-874-6717

Resources

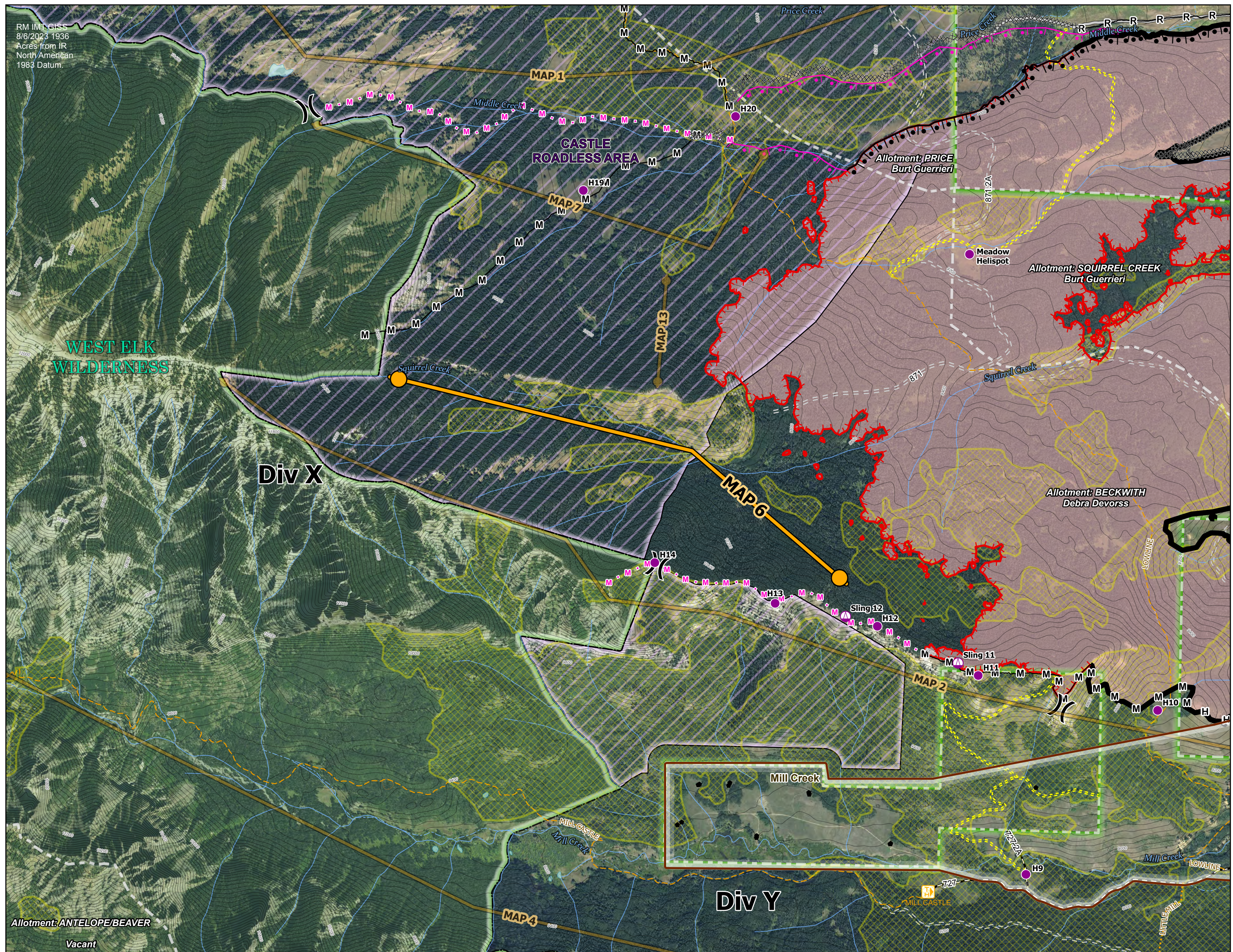
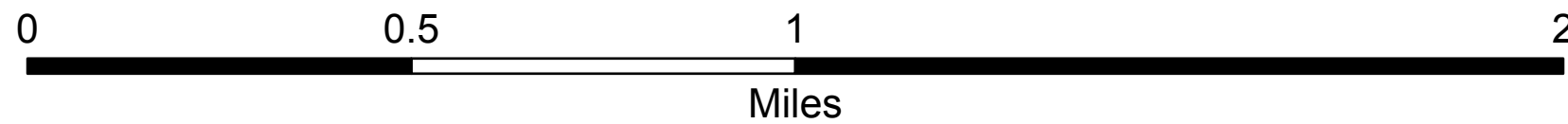
1 Type 3/4 IC, 2 Wildland Fire Module Type 1 or Suppression Modules, 1 Type 3 helicopter, 1 wildland fire engine

Incident Features

- Management Action Point
- Helispot
- ⊕ Sling Site
-) (Division Break
- ▬ Contained
- ▬ Uncontained
- ▬ Completed Burnout
- ××× Completed Dozer Line
- H— Completed Hand Line
- M— Completed Mixed Construction Line
- R— Completed Road as Line
- Planned Burnout
- Planned Mixed Construction Line
- Access or Improved Road
- ▬ Wildfire Daily Fire Perimeter
- ▬ Planning Area
- ▬ Aspen

Reference Features

- ▬ StructurePoints
- ▬ Trailhead
- ▬ ATV/UTV Trail (Non-Public)
- ▬ Trail (Non-Motorized)
- ▬ Trail (Motorcycle)
- ▬ Open Road (FS)
- ▬ Decommissioned/Closed Road
- ▬ Community Unit
- ▬ Grazing Allotments
- ▬ Colorado Roadless Area
- ▬ FS Wilderness
- ▬ US Forest Service
- ▬ Aspen



RM 1111-8155
8/6/2023 1936
Acres from IR
North American
1983 Datum.

Allotment: ANTELOPE/BEAVER
Vacant