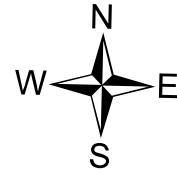


Management Action Points

Lowline
COGMF000176
8/6/2023

1,821 acres at 8/5/2023 @ 2111 hrs

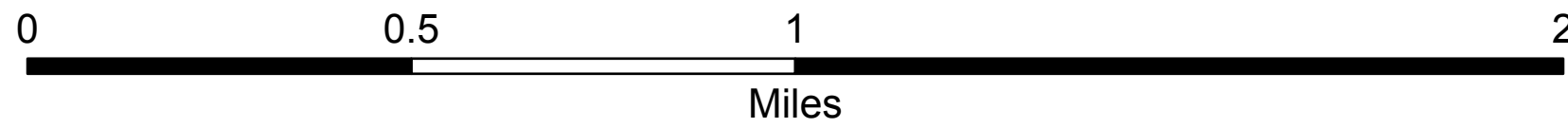


Incident Features

- Management Action Point
- Helispot
- ⊙ Sling Site
-) Division Break
- ▬ Contained
- ▬ Uncontained
- ▬ Completed Burnout
- ×××× Completed Dozer Line
- M— Completed Mixed Construction Line
- R— Completed Road as Line
- Planned Burnout
- M· Planned Mixed Construction Line
- Access or Improved Road
- ▬ Wildfire Daily Fire Perimeter
- ▬ Planning Area
- ▨ Aspen

Reference Features

- ◆ StructurePoints
- ATV/UTV Trail (Non-Public)
- Trail (Non-Motorized)
- = = = Decommissioned/Closed Road
- ▨ Grazing Allotments
- ▨ Colorado Roadless Area
- ▨ FS Wilderness
- ▨ US Forest Service
- ▨ Aspen



Management Action Point #7 (Middle Creek)

Condition

Fire Crosses or is likely to cross MAP and has become established north, northwest, or northeast of MAP 7. Expected Fire behavior and weather indicate continued growth and advancement towards the indirect fire line along Middle Creek.

Actions

Evaluate current and expected fire behavior. Mobilize resources to Division Whiskey (W) and if needed Initiate burnout operations along the indirect fire line in Middle Creek to the wilderness boundary.

Notify cooperators and public of increase in fire activity and planned actions. Key Cooperators include:

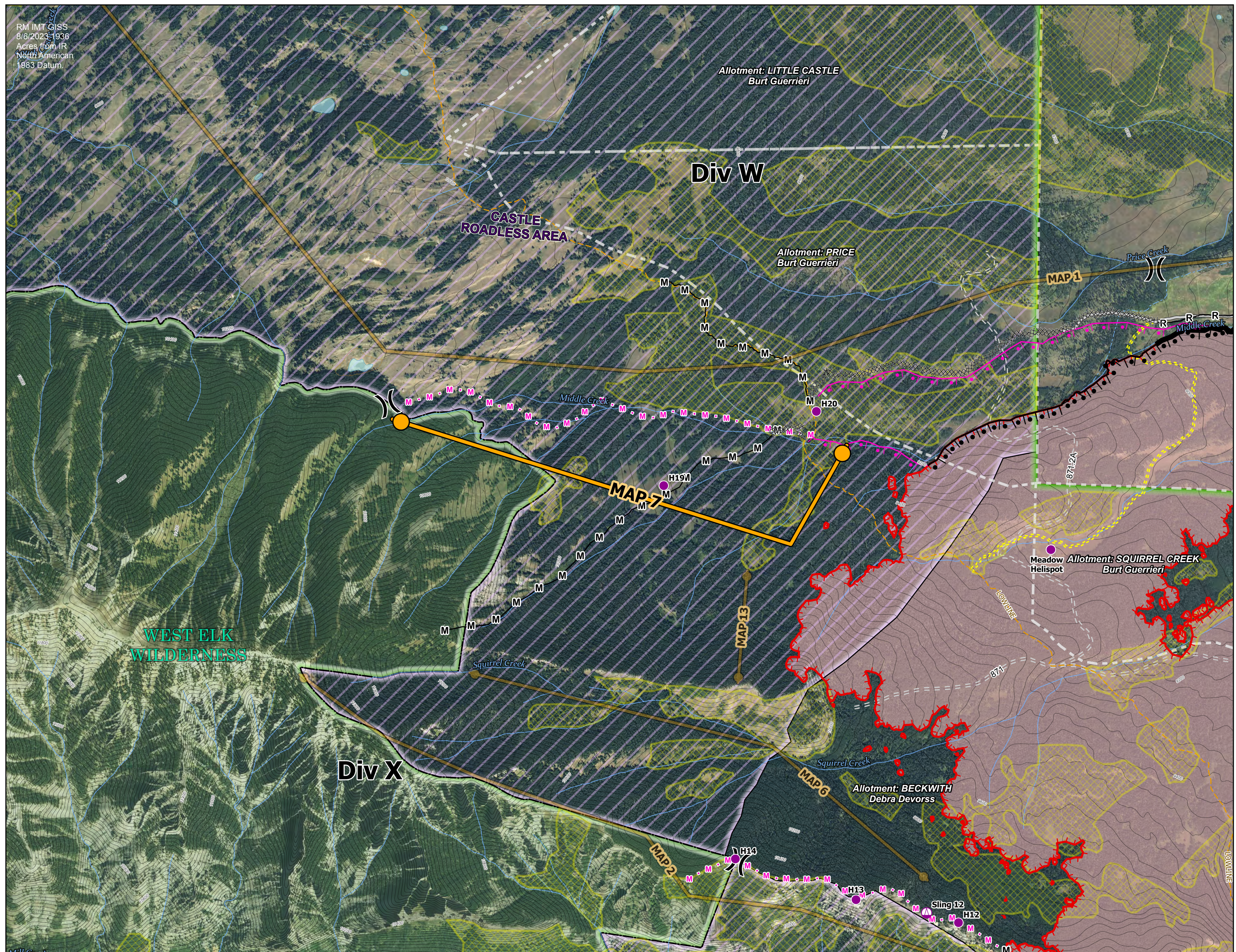
- AA USFS - Curtis Keetch 970-366-0669
- AA DFPC - Luke Odom 970-773-4259
- AA Bureau of Land Management - District Manager Stephanie Connolly 970-216-5243, Field Manager Jon Kaminsky 970-456-8157
- USFS District Ranger - Dayle Funka 970-596-4854
- Gunnison County Sheriff - Adam Murdie 970-975-1777
- Gunnison County Emergency Manager - Scott Morrill 970-275-1370
- Gunnison Fire Chief - Hugo Ferchau 970-641-8153

Prepare/implement public information plan. The plan may include items such as the location of the information center; shelter locations for people and animals; advice on structure protection; air quality alerts; evacuation notices and updates; and information to other entities that may be impacted by the fire.

- USFS PAO - Kimberly Phillips 970-874-6717

Resources

1 Type 3/4 IC, 2 Wildland Fire Module Type 1 or Suppression Modules, 1 Type 3 Helicopter, 1 wildland fire engine



RM IMT GIS
8/6/2023 1936
Acres from IR
North American
1983 Datum