
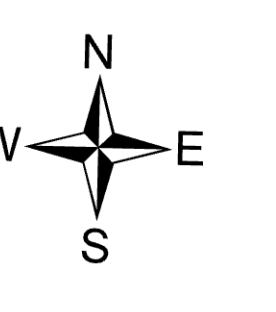



# Structure Triage

Lowline  
COGMF000176  
8/7/2023

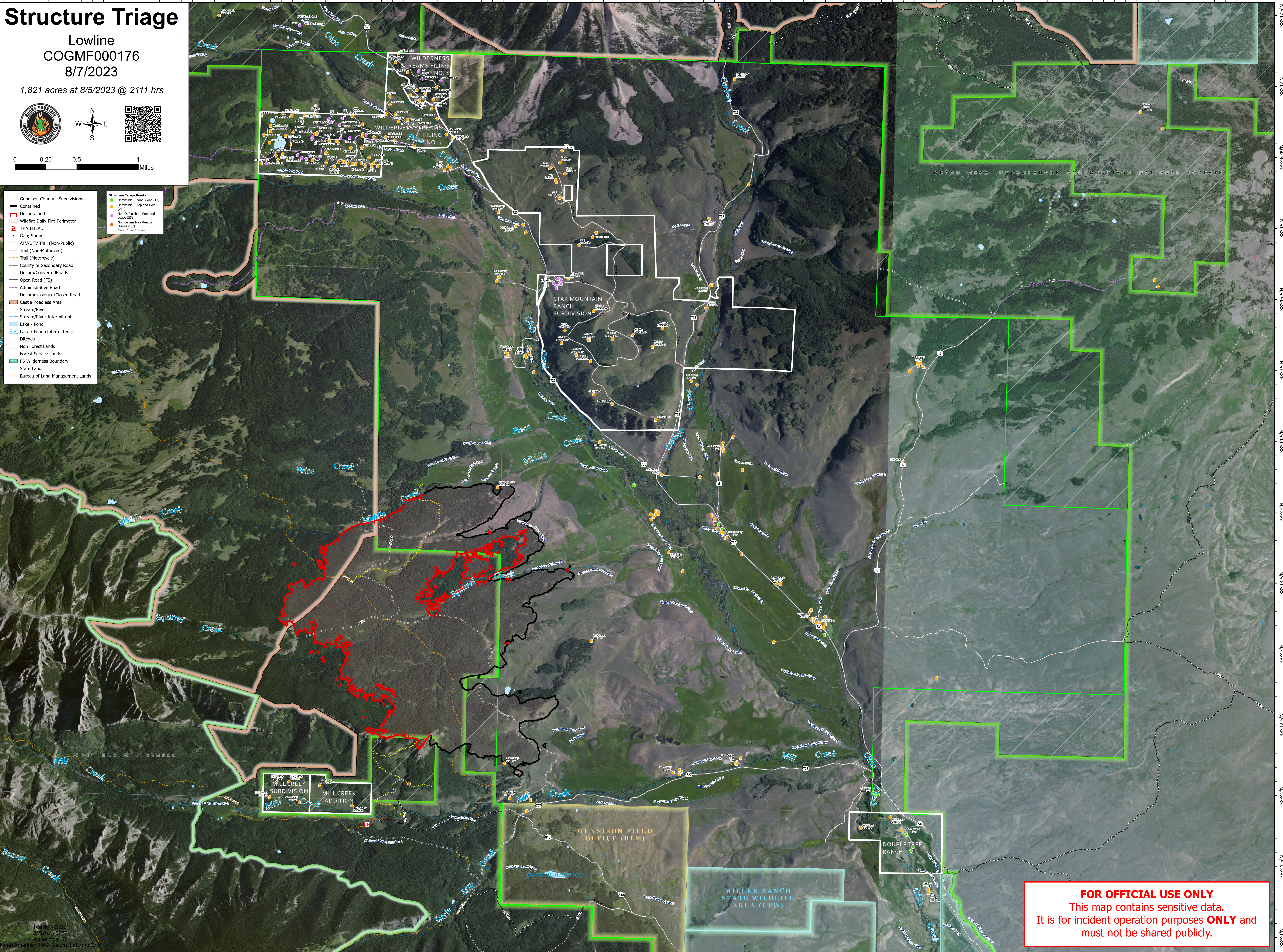
1,821 acres at 8/5/2023 @ 2111 hrs



0 0.25 0.5 1 Miles

Gunnison County - Subdivisions	
	Contained
	Uncontained
	Wildfire Daily Fire Perimeter
	TRAILHEAD
	Gap; Summit
	ATV/UTV Trail (Non-Public)
	Trail (Non-Motorized)
	Trail (Motorcycle)
	County or Secondary Road
	Decom/Converted Roads
	Open Road (FS)
	Administrative Road
	Decommissioned/Closed Road
	Castle Roadless Area
	Stream/River
	Stream/River Intermittent
	Lake / Pond
	Lake / Pond (Intermittent)
	Ditches
	Non Forest Lands
	Forest Service Lands
	FS Wilderness Boundary
	State Lands
	Bureau of Land Management Lands

Structure Triage Points	
	Defensible - Stand Alone (11)
	Defensible - Prep and Hold (212)
	Non-Defensible - Prep and Leave (25)
	Non-Defensible - Rescue (2)
	Rescue Only (2)



**FOR OFFICIAL USE ONLY**  
This map contains sensitive data.  
It is for incident operation purposes **ONLY** and  
must not be shared publicly.