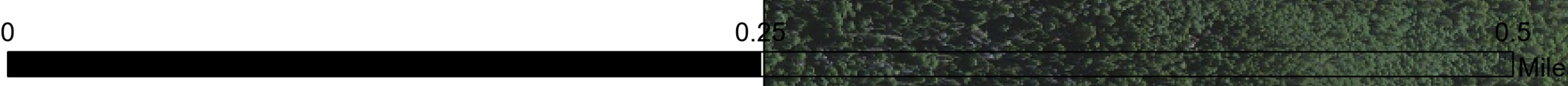
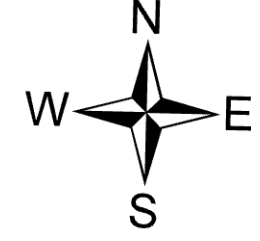


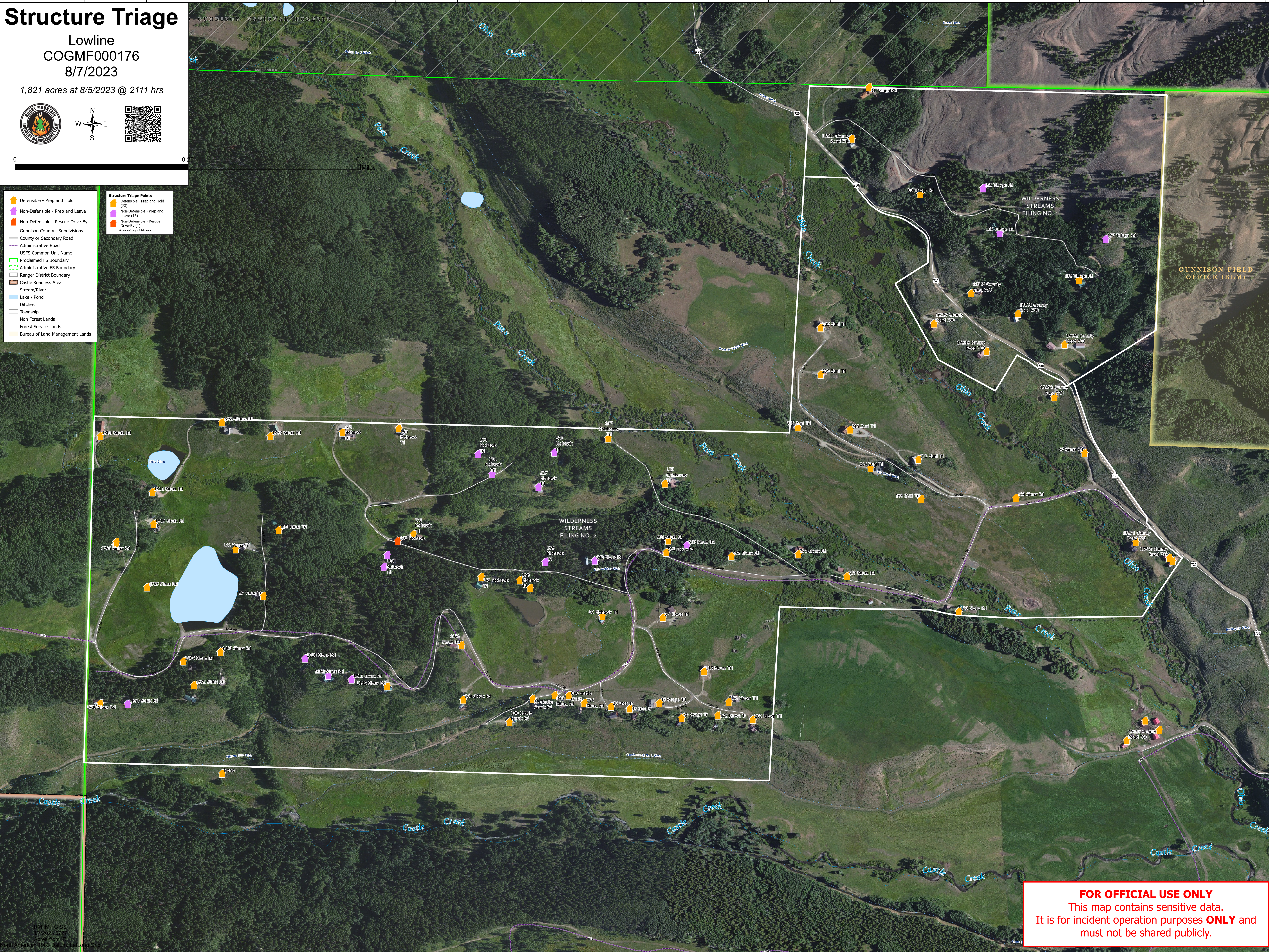
Structure Triage

Lowline
COGMF000176
8/7/2023

1,821 acres at 8/5/2023 @ 2111 hrs



- Defensible - Prep and Hold
 - Non-Defensible - Prep and Leave
 - Non-Defensible - Rescue Drive-By
 - Gunnison County - Subdivisions
 - County or Secondary Road
 - Administrative Road
 - USFS Common Unit Name
 - Proclaimed FS Boundary
 - Administrative FS Boundary
 - Ranger District Boundary
 - Castle Roadless Area
 - Stream/River
 - Lake / Pond
 - Ditches
 - Township
 - Non Forest Lands
 - Forest Service Lands
 - Bureau of Land Management Lands
- Structure Triage Points**
- Defensible - Prep and Hold (73)
 - Non-Defensible - Prep and Leave (16)
 - Non-Defensible - Rescue Drive-By (11)
 - Non-Defensible - Rescue Drive-By (Subdivisions)



FOR OFFICIAL USE ONLY
This map contains sensitive data.
It is for incident operation purposes **ONLY** and
must not be shared publicly.