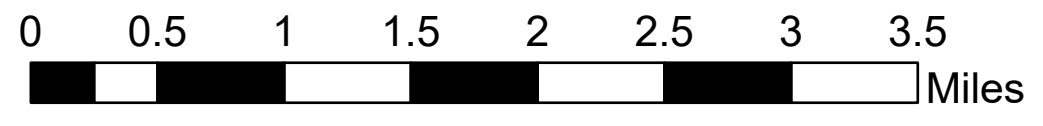


Air Ops

Lowline
COGMF000176
7/29/2023

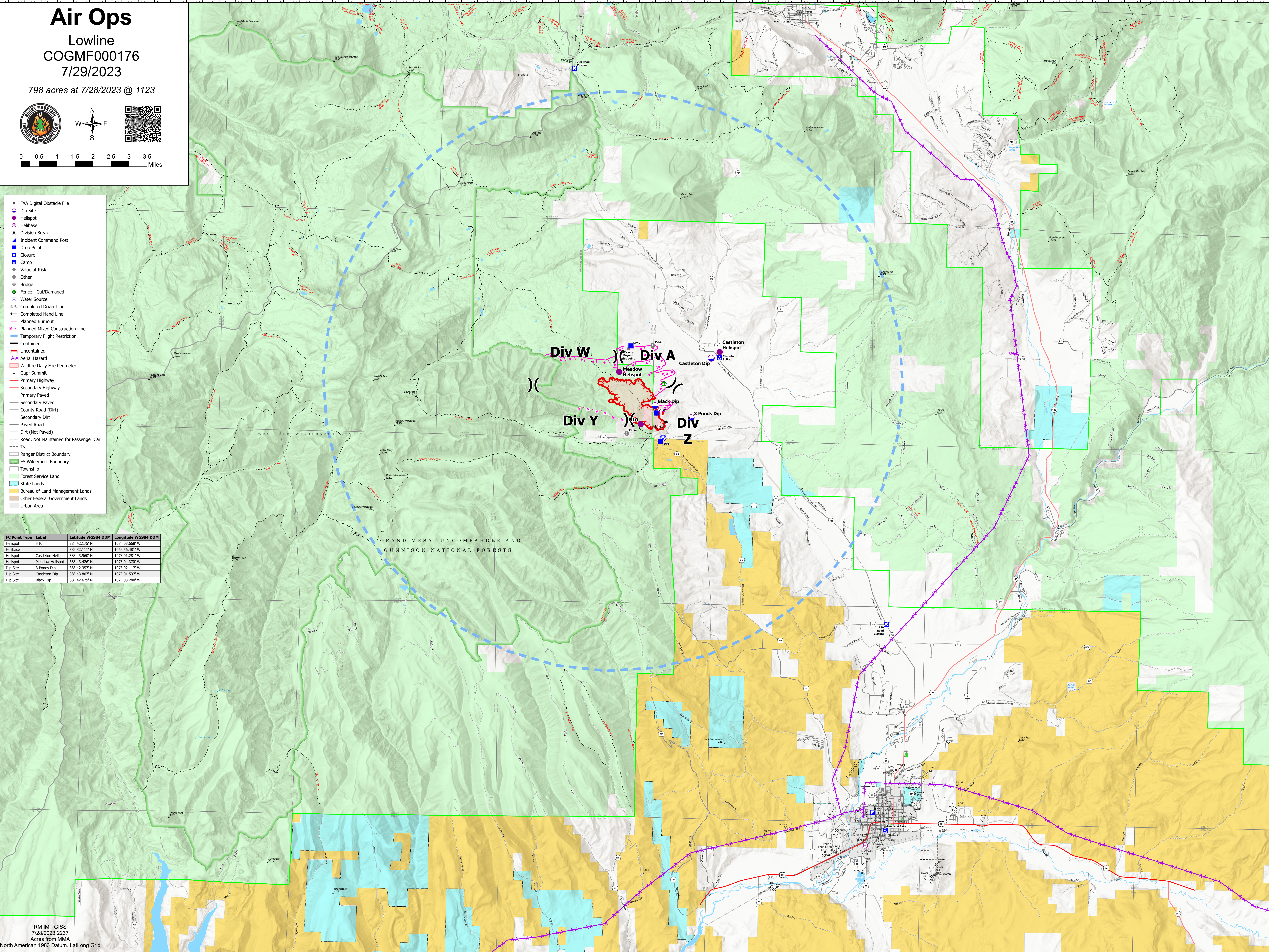
798 acres at 7/28/2023 @ 1123



- × FAA Digital Obstacle File
- Dip Site
- Helibase
- ⌵ Division Break
- Incident Command Post
- Drop Point
- Closure
- Camp
- Value at Risk
- Other
- Bridge
- Fence - Cut/Damaged
- Water Source
- ⋯ Completed Dozer Line
- ⋯ Completed Hand Line
- ⋯ Planned Burnout
- ⋯ Planned Mixed Construction Line
- ⋯ Temporary Flight Restriction
- ⋯ Contained
- ⋯ Uncontained
- ⋯ Aerial Hazard
- ⋯ Wildfire Daily Fire Perimeter
- Gap; Summit
- Primary Highway
- Secondary Highway
- Primary Paved
- Secondary Paved
- County Road (Dirt)
- Secondary Dirt
- Paved Road
- Dirt (Not Paved)
- Road, Not Maintained for Passenger Car
- Trail
- ▭ Ranger District Boundary
- ▭ FS Wilderness Boundary
- ▭ Township
- ▭ Forest Service Land
- ▭ State Lands
- ▭ Bureau of Land Management Lands
- ▭ Other Federal Government Lands
- ▭ Urban Area

FC Point Type	Label	Latitude WGS84 DDM	Longitude WGS84 DDM
Helibase	H10	38° 42.175' N	107° 03.668' W
Helibase	Castleton Helispot	38° 32.111' N	106° 56.481' W
Helibase	Meadow Helispot	38° 43.960' N	107° 01.281' W
Helibase	Black Dip	38° 43.426' N	107° 04.370' W
Dip Site	3 Ponds Dip	38° 42.357' N	107° 02.117' W
Dip Site	Castleton Dip	38° 43.807' N	107° 01.537' W
Dip Site	Black Dip	38° 42.629' N	107° 03.240' W

RM IMT GISS
7/28/2023 2237
Acres from MMA
North American 1983 Datum, Lat/Long Grid



GRAND MESA, UNCOMPAHGRE AND
GUNNISON NATIONAL FORESTS