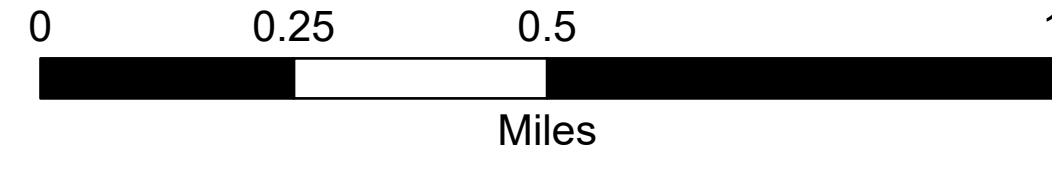
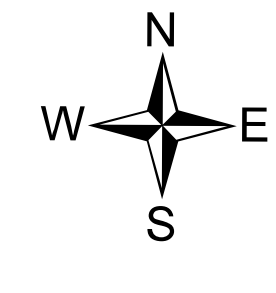


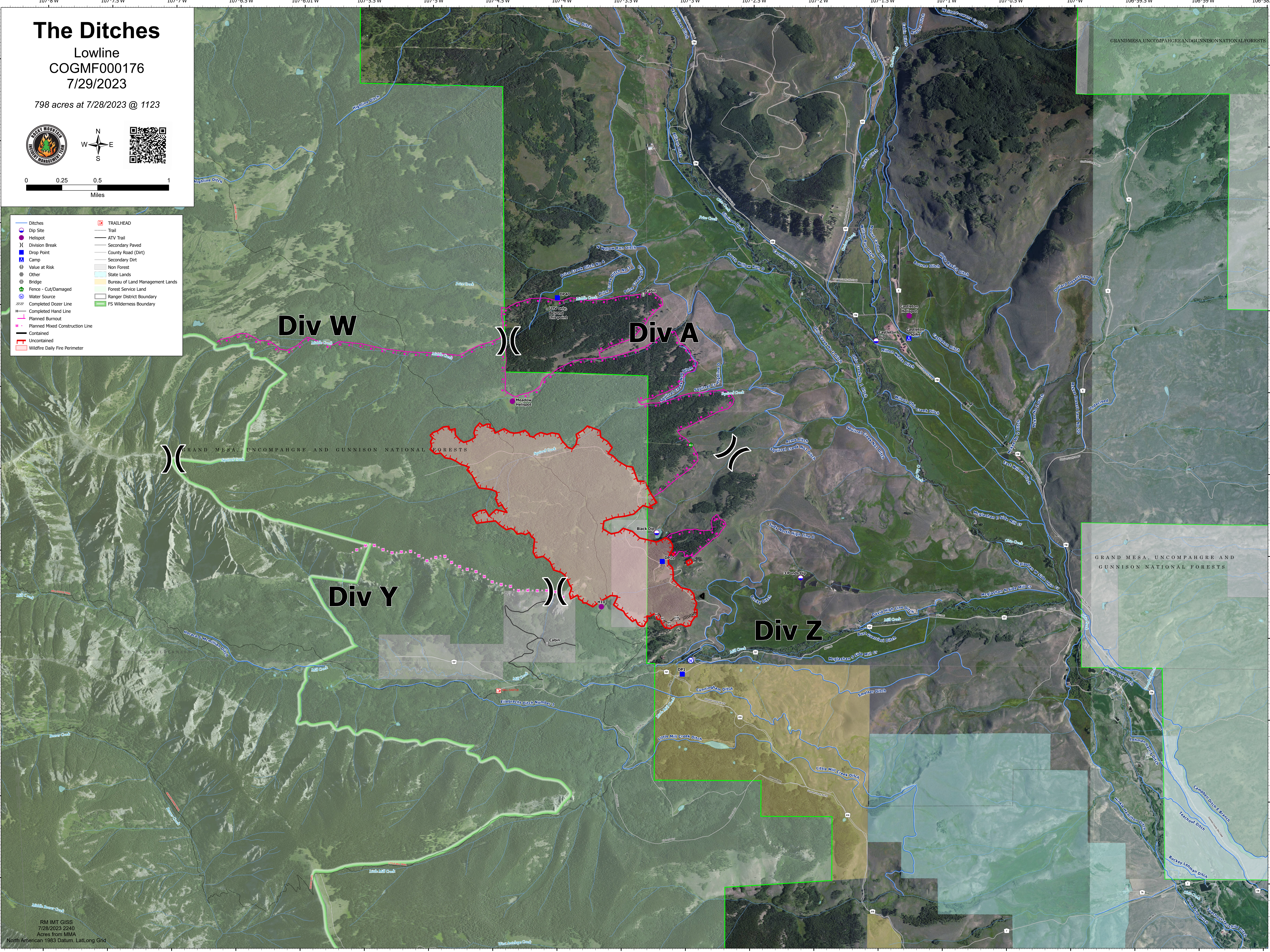
The Ditches

Lowline
COGMF000176
7/29/2023

798 acres at 7/28/2023 @ 1123



- | | |
|---------------------------------|---------------------------------|
| Ditches | TRAILHEAD |
| Dip Site | Trail |
| Helispot | ATV Trail |
| Division Break | Secondary Paved |
| Drop Point | County Road (Dirt) |
| Camp | Secondary Dirt |
| Value at Risk | Non Forest |
| Other | State Lands |
| Bridge | Bureau of Land Management Lands |
| Fence - Cut/Damaged | Forest Service Land |
| Water Source | Ranger District Boundary |
| Completed Dozer Line | FS Wilderness Boundary |
| Completed Hand Line | |
| Planned Burnout | |
| Planned Mixed Construction Line | |
| Contained | |
| Uncontained | |
| Wildfire Daily Fire Perimeter | |



Div W

Div A

Div Y

Div Z