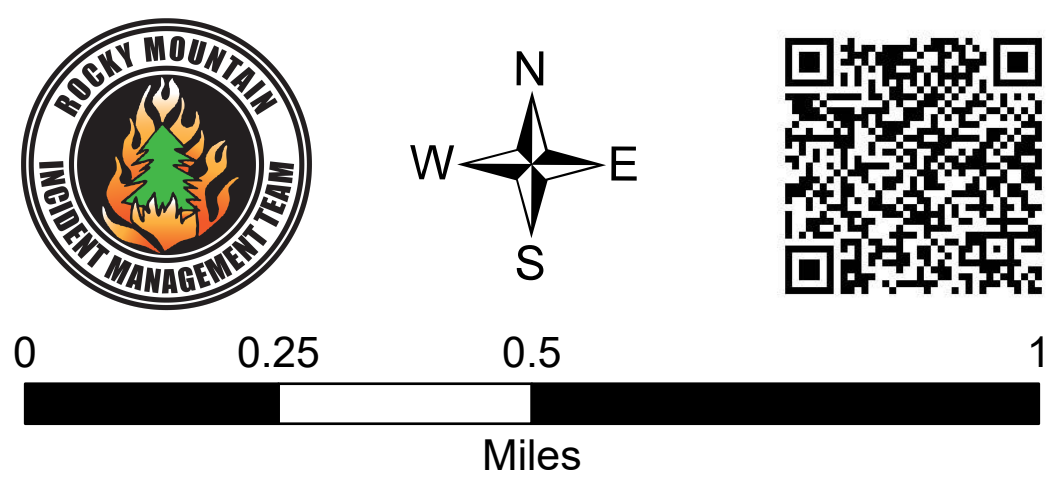


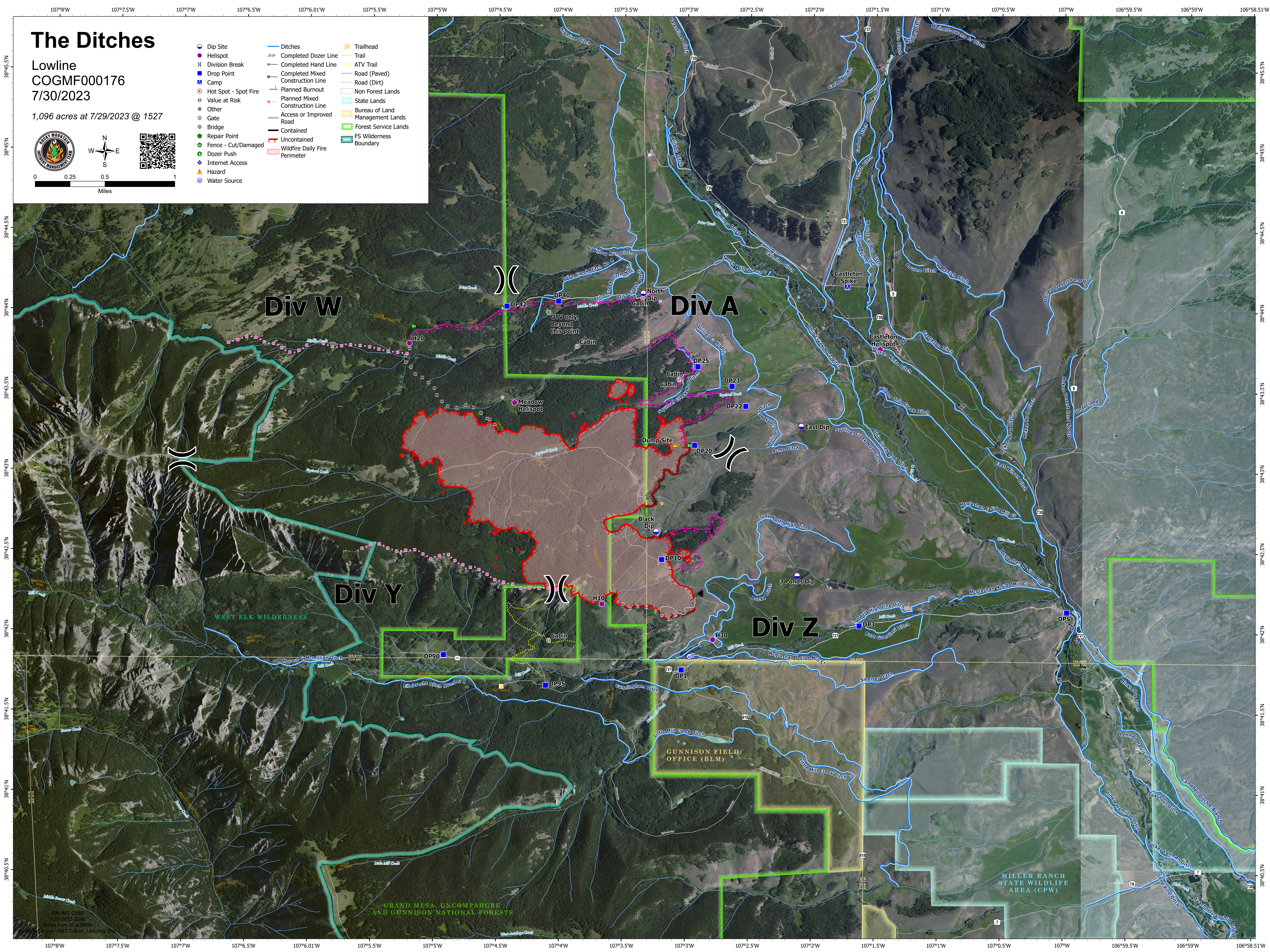
The Ditches

Lowline
COGMF000176
7/30/2023

1,096 acres at 7/29/2023 @ 1527



- | | | |
|------------------------|---------------------------------------|-----------------------------------|
| ● Dip Site | — Ditches | □ Trailhead |
| ● Helispot | --- Completed Dozer Line | --- Trail |
| X Division Break | --- Completed Hand Line | --- ATV Trail |
| ■ Drop Point | --- Completed Mixed Construction Line | — Road (Paved) |
| ■ Camp | --- Planned Burnout Construction Line | — Road (Dirt) |
| ● Hot Spot - Spot Fire | --- Planned Mixed Construction Line | □ Non Forest Lands |
| ● Value at Risk | --- Access or Improved Road | □ State Lands |
| ● Other | --- Contained | □ Bureau of Land Management Lands |
| ● Gate | --- Uncountained | □ Forest Service Lands |
| ● Bridge | --- Wildfire Daily Fire Perimeter | □ FS Wilderness Boundary |
| ● Repair Point | | |
| ● Fence - Cut/Damaged | | |
| ● Dozer Push | | |
| ● Internet Access | | |
| ● Hazard | | |
| ● Water Source | | |



Div W

Div A

Div Y

Div Z

GUNNISON FIELD OFFICE (BLM)

MILLER RANCH STATE WILDLIFE AREA (CPW)

GRAND MESA, UNCOMPAHGRE AND GUNNISON NATIONAL FORESTS

RM INT GIS
7/29/2023 2:24
Acres from IR & MMA
NAD 83 Datum, Laidong