

Ownership

Lowline
COGMF000176
7/30/2023

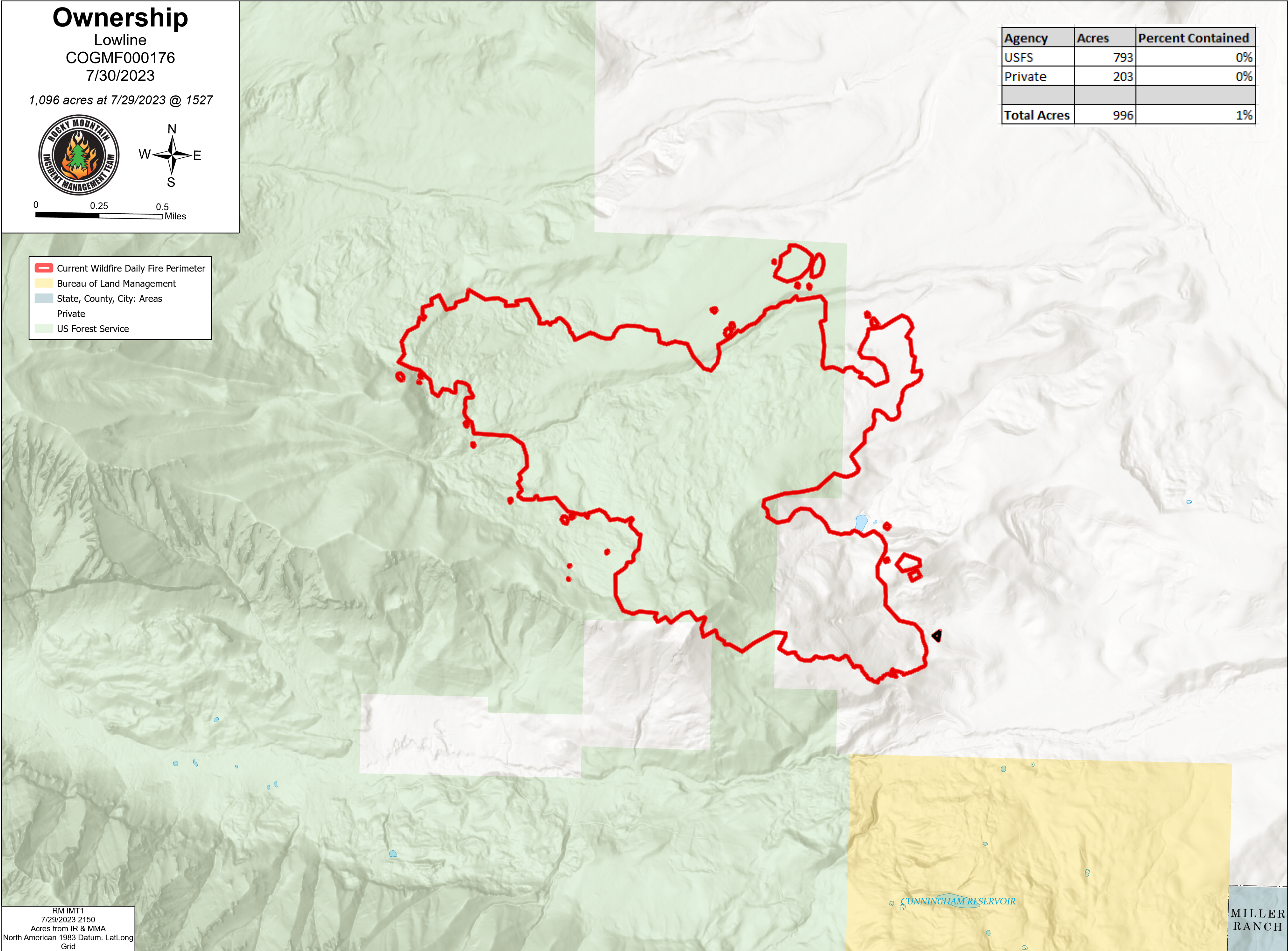
1,096 acres at 7/29/2023 @ 1527



0 0.25 0.5 Miles

Agency	Acres	Percent Contained
USFS	793	0%
Private	203	0%
Total Acres	996	1%

- Current Wildfire Daily Fire Perimeter
- Bureau of Land Management
- State, County, City: Areas
- Private
- US Forest Service



RM IMT1
7/29/2023 2150
Acres from IR & MMA
North American 1983 Datum. LatLong
Grid

MILLER
RANCH