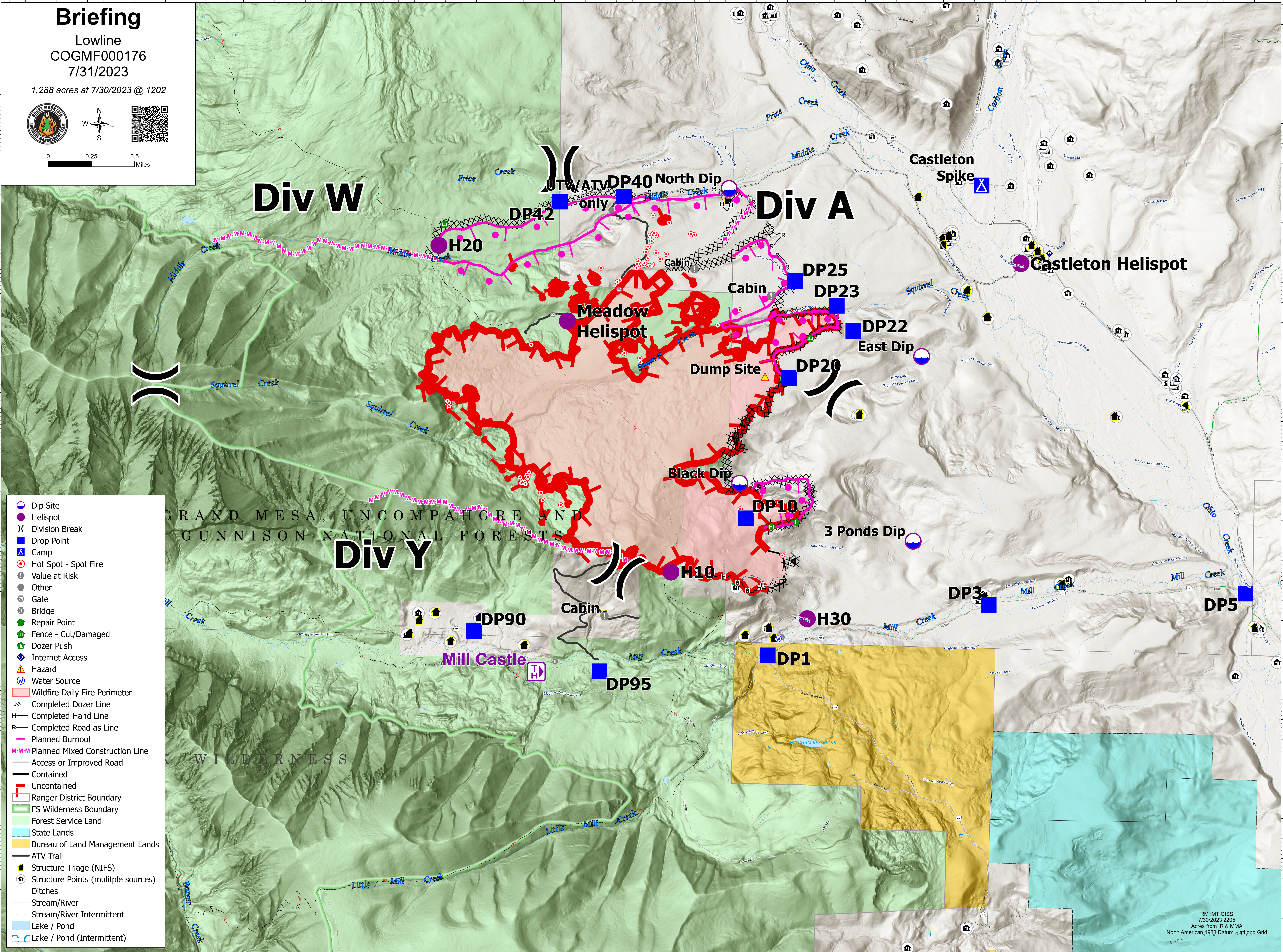
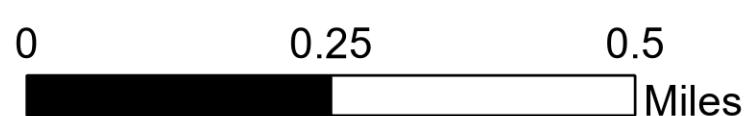
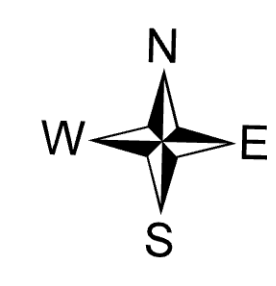


Briefing

Lowline
COGMF000176
7/31/2023

1,288 acres at 7/30/2023 @ 1202



- Dip Site
- Helispot
- Division Break
- Drop Point
- Camp
- Hot Spot - Spot Fire
- Value at Risk
- Other
- Gate
- Bridge
- Repair Point
- Fence - Cut/Damaged
- Dozer Push
- Internet Access
- Hazard
- Water Source
- Wildfire Daily Fire Perimeter
- Completed Dozer Line
- Completed Hand Line
- Completed Road as Line
- Planned Burnout
- Planned Mixed Construction Line
- Access or Improved Road
- Contained
- Uncontained
- Ranger District Boundary
- FS Wilderness Boundary
- Forest Service Land
- State Lands
- Bureau of Land Management Lands
- ATV Trail
- Structure Triage (NIFS)
- Structure Points (multiple sources)
- Ditches
- Stream/River
- Stream/River Intermittent
- Lake / Pond
- Lake / Pond (Intermittent)

GRAND MESA, UNCOMPAGRE AND GUNNISON NATIONAL FORESTS

WILDERNESS