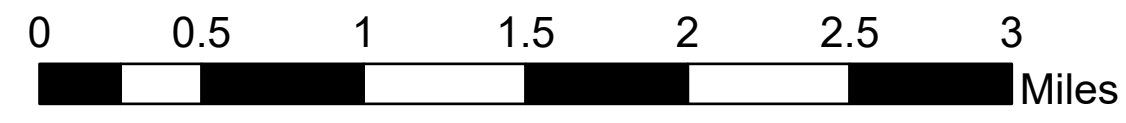
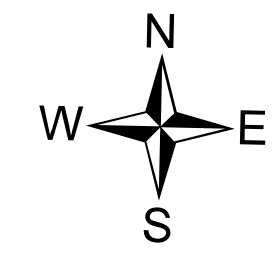


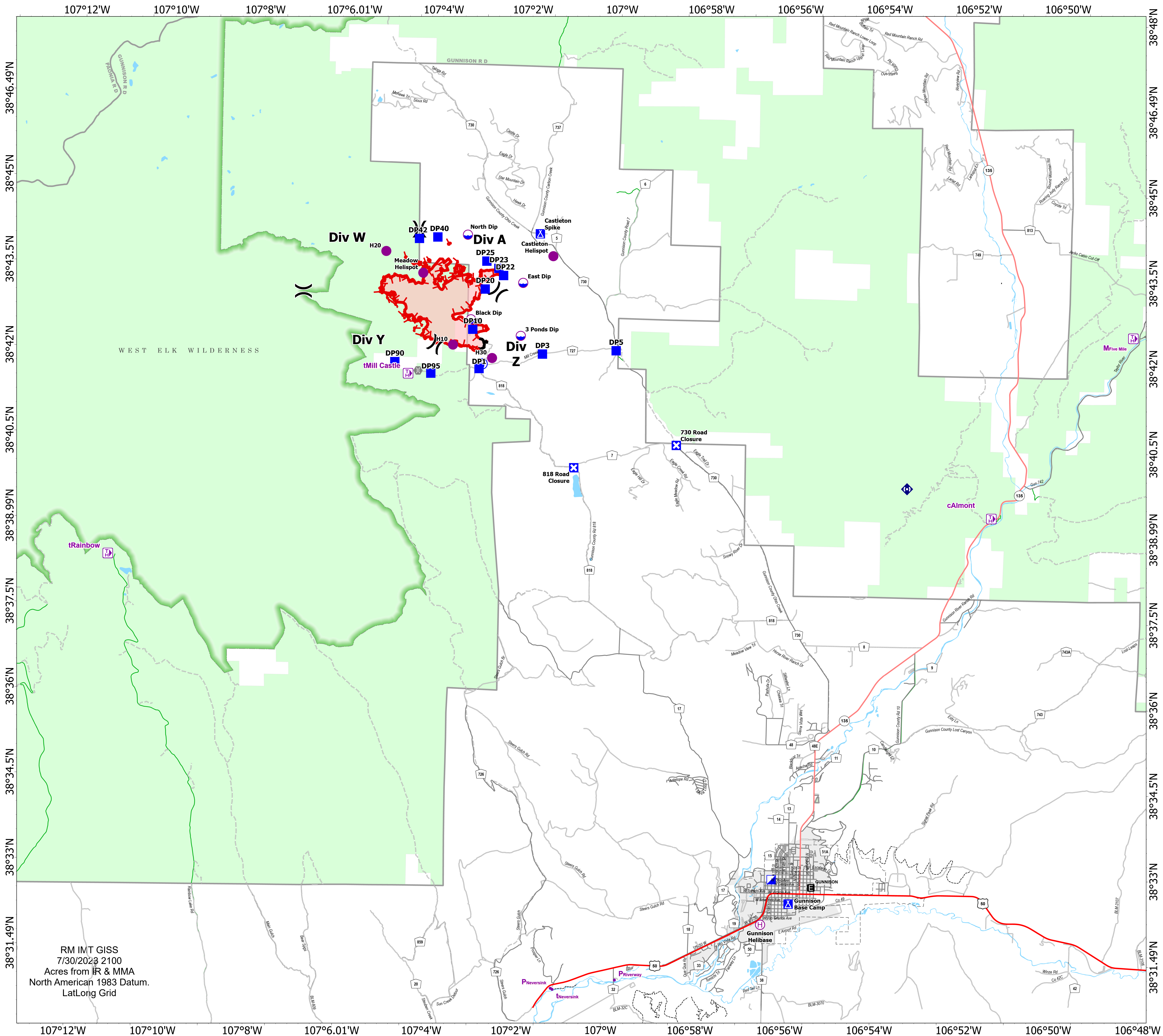
Transportation

Lowline
COGMF000176
7/31/2023

1,288 acres at 7/30/2023 @ 1202



- Dip Site
- Helispot
- Helibase
- Division Break
- Incident Command Post
- Drop Point
- Closure
- Camp
- Bridge
- Repeater
- Water Source
- Wildfire Daily Fire Perimeter
- Contained
- Uncontained
- RANGER DISTRICT OFFICE
- Trail Head
- Primary Highway
- Secondary Highway
- Secondary Paved
- County Road (Dirt)
- Secondary Dirt
- National Trail USGS
- Ranger District Boundary
- FS Wilderness Boundary
- Incorporated Place
- Forest Service Land



RM IMT GISS
7/30/2023 2100
Acres from 1983 & MMA
North American 1983 Datum.
LatLong Grid