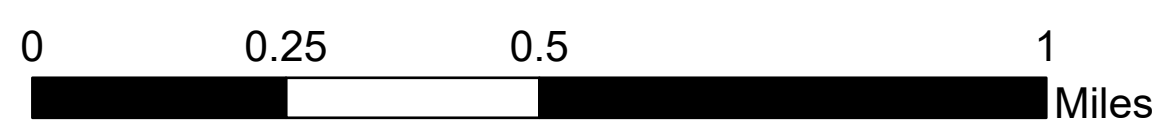
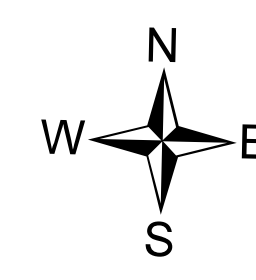


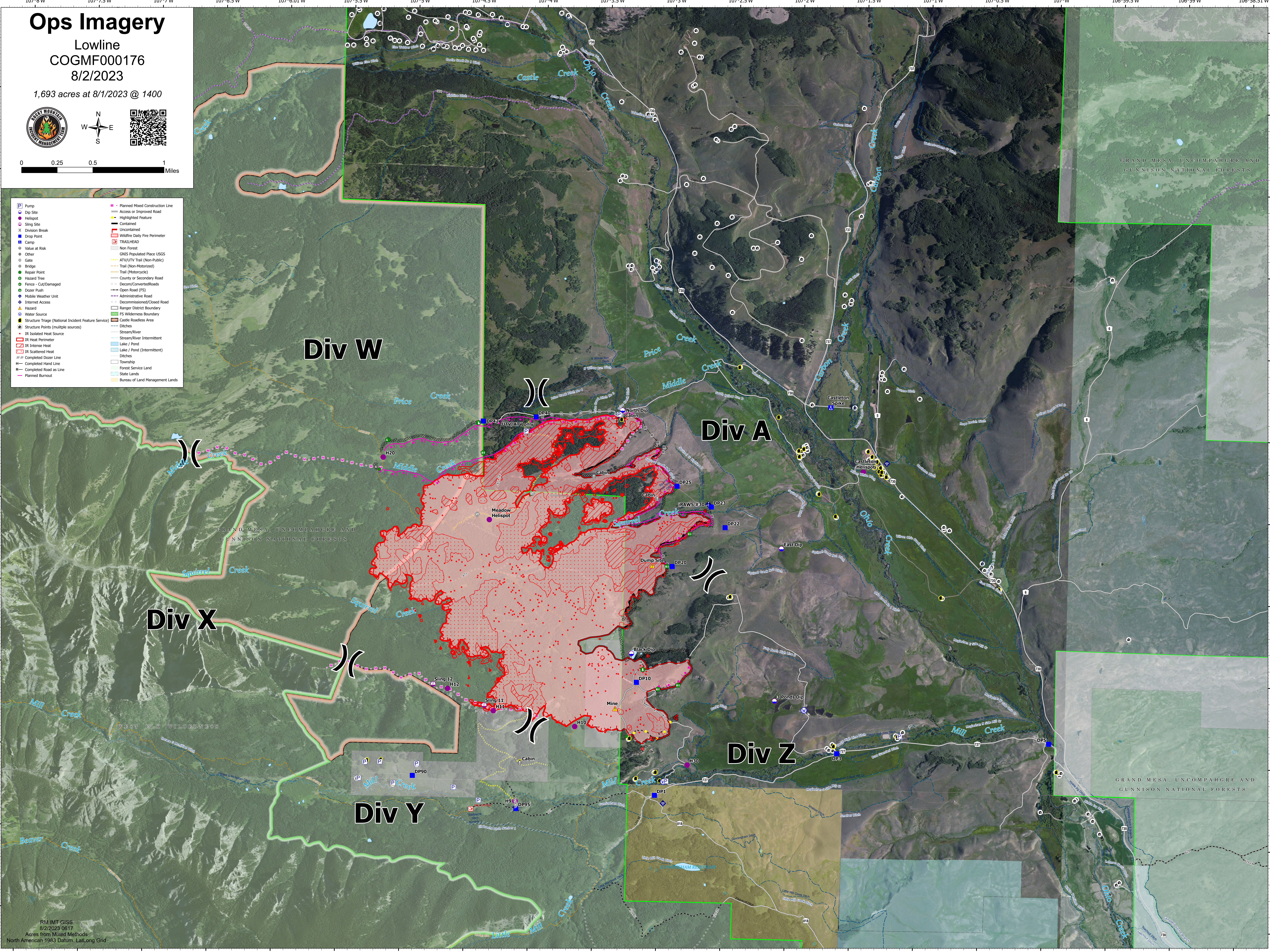
# Ops Imagery

Lowline  
COGMF000176  
8/2/2023

1,693 acres at 8/1/2023 @ 1400



- Pump
- Dip Site
- Helispot
- Sling Site
- Division Break
- Drop Point
- Camp
- Value at Risk
- Other
- Gate
- Bridge
- Repair Point
- Hazard Tree
- Fence - Cut/Damaged
- Dozer Push
- Mobile Weather Unit
- Internet Access
- Hazard
- Water Source
- Structure Triage (National Incident Feature Service)
- Structure Points (multiple sources)
- IR Isolated Heat Source
- IR Heat Perimeter
- IR Intense Heat
- IR Scattered Heat
- Completed Dozer Line
- Completed Hand Line
- Completed Road as Line
- Planned Burnout
- Planned Mixed Construction Line
- Access or Improved Road
- Highlighted Feature
- Contaminated
- Uncolimated
- Wildfire Daily Fire Perimeter
- TRAILHEAD
- Non Forest
- GNIS Populated Place USGS
- ATV/UTV Trail (Non-Public)
- Trail (Non-Motorized)
- Trail (Motorcycle)
- County or Secondary Road
- Decom/Converted Roads
- Open Road (FS)
- Administrative Road
- Decommissioned/Closed Road
- Ranger District Boundary
- FS Wilderness Boundary
- Castle Roadless Area
- Ditches
- Stream/River
- Stream/River Intermittent
- Lake / Pond
- Lake / Pond (Intermittent)
- Ditches
- Township
- Forest Service Land
- State Lands
- Bureau of Land Management Lands



Div W

Div A

Div X

Div Y

Div Z