

Ownership

Lowline
COGMF000176
8/1/2023

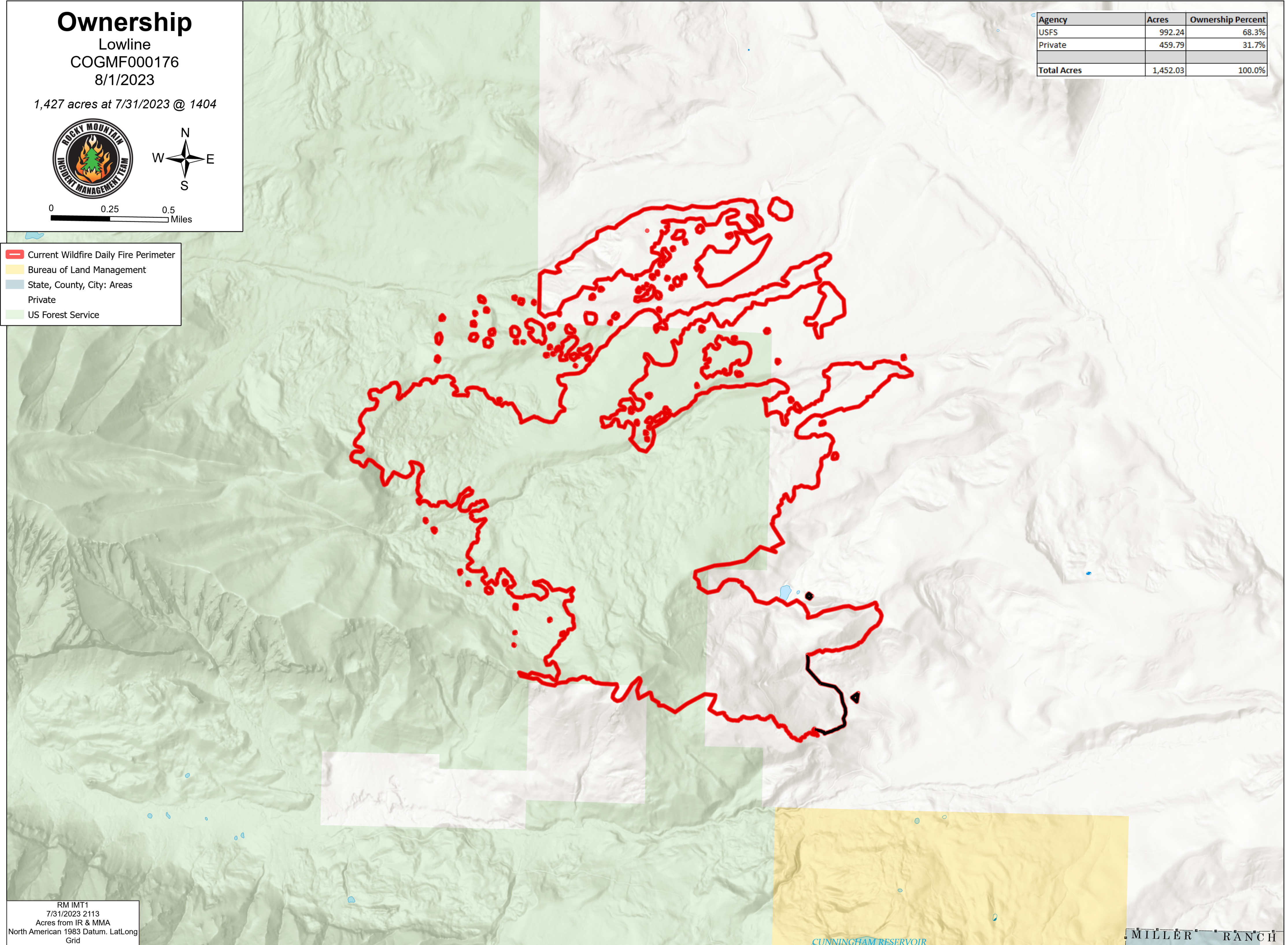
1,427 acres at 7/31/2023 @ 1404



0 0.25 0.5 Miles

- Current Wildfire Daily Fire Perimeter
- Bureau of Land Management
- State, County, City: Areas
- Private
- US Forest Service

Agency	Acres	Ownership Percent
USFS	992.24	68.3%
Private	459.79	31.7%
Total Acres	1,452.03	100.0%



RM IMT1
7/31/2023 2113
Acres from IR & MMA
North American 1983 Datum. LatLong
Grid

CUNNINGHAM RESERVOIR

MILLER RANCH