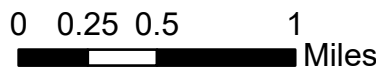


Pilot

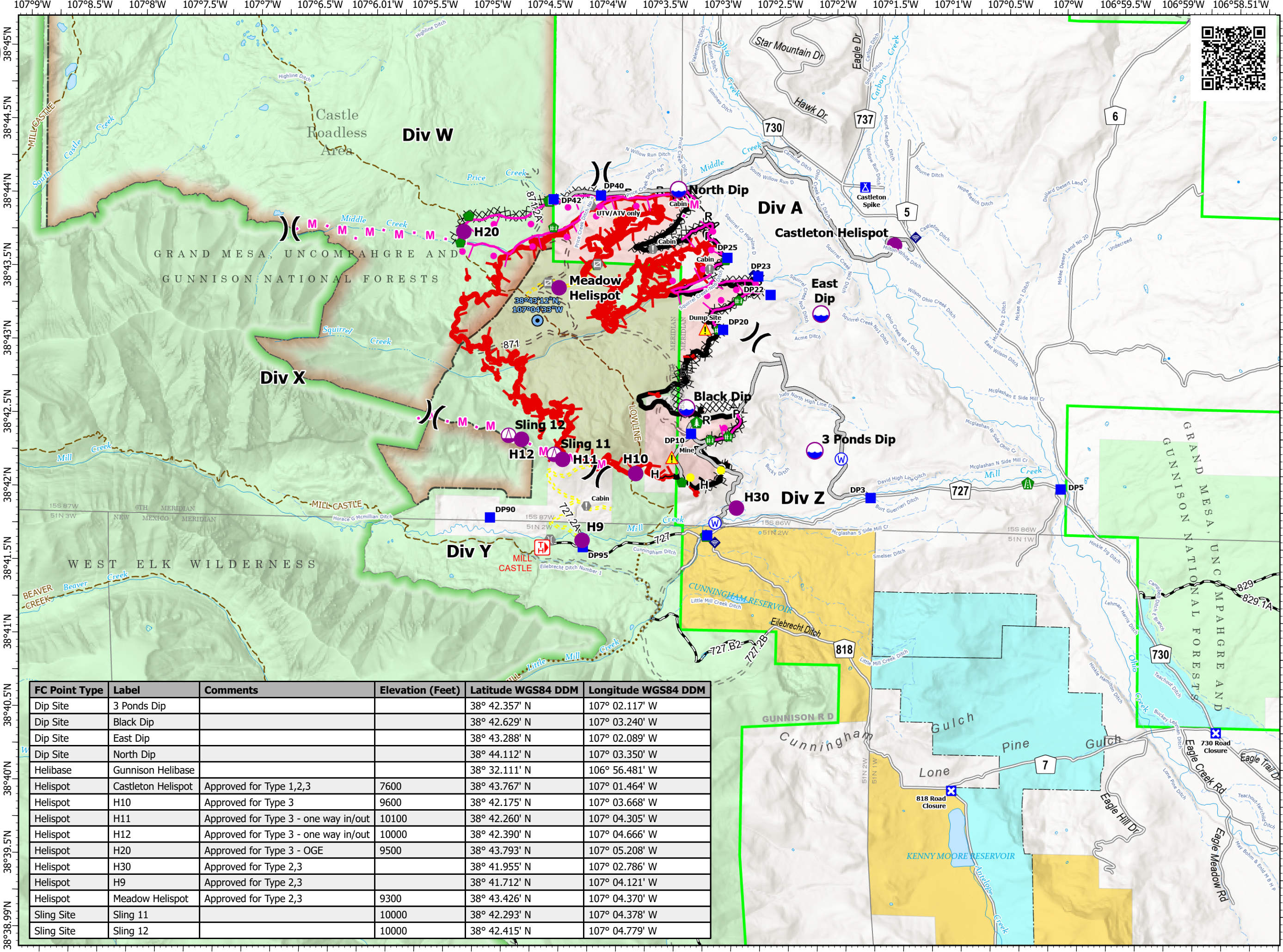
Lowline
COGMF000176
8/2/2023

1,760 acres at 8/2/2023 @ 0012



TFR Center - Radius: 7 nautical miles.

- Dip Site
- Helispot
- Sling Site
- Division Break
- Drop Point
- Closure
- Camp
- Value at Risk
- Other
- Gate
- Bridge
- Road Repair
- Repair Point
- Hazard Tree
- Fence - Cut/Damaged
- Dozer Push
- Clean Up Area
- Mobile Weather Unit
- Internet Access
- Hazard
- Water Source
- Completed Dozer Line
- Completed Hand Line
- Completed Road as Line
- Planned Burnout
- Planned Mixed Construction Line
- Access or Improved Road
- Highlighted Feature
- Contained
- Uncontained
- Wildfire Daily Fire Perimeter
- Ditches
- Forest Service Land
- State Lands
- Bureau of Land Management Lands
- Administrative FS Boundary
- Ranger District Boundary
- FS Wilderness Boundary
- Colorado Roadless Area
- TRAILHEAD
- County or Secondary Road
- Open Road (FS)
- Administrative Road
- Decommissioned/Closed Road
- Decom/Converted Roads
- ATV/UTV Trail (Non-Public)
- Stream/River
- Stream/River Intermittent
- Lake / Pond



FC Point Type	Label	Comments	Elevation (Feet)	Latitude WGS84 DDM	Longitude WGS84 DDM
Dip Site	3 Ponds Dip			38° 42.357' N	107° 02.117' W
Dip Site	Black Dip			38° 42.629' N	107° 03.240' W
Dip Site	East Dip			38° 43.288' N	107° 02.089' W
Dip Site	North Dip			38° 44.112' N	107° 03.350' W
Helibase	Gunnison Helibase			38° 32.111' N	106° 56.481' W
Helispot	Castleton Helispot	Approved for Type 1,2,3	7600	38° 43.767' N	107° 01.464' W
Helispot	H10	Approved for Type 3	9600	38° 42.175' N	107° 03.668' W
Helispot	H11	Approved for Type 3 - one way in/out	10100	38° 42.260' N	107° 04.305' W
Helispot	H12	Approved for Type 3 - one way in/out	10000	38° 42.390' N	107° 04.666' W
Helispot	H20	Approved for Type 3 - OGE	9500	38° 43.793' N	107° 05.208' W
Helispot	H30	Approved for Type 2,3		38° 41.955' N	107° 02.786' W
Helispot	H9	Approved for Type 2,3		38° 41.712' N	107° 04.121' W
Helispot	Meadow Helispot	Approved for Type 2,3	9300	38° 43.426' N	107° 04.370' W
Sling Site	Sling 11		10000	38° 42.293' N	107° 04.378' W
Sling Site	Sling 12		10000	38° 42.415' N	107° 04.779' W