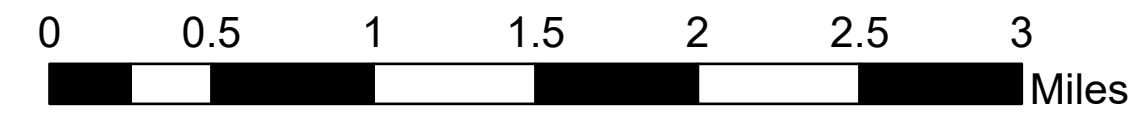


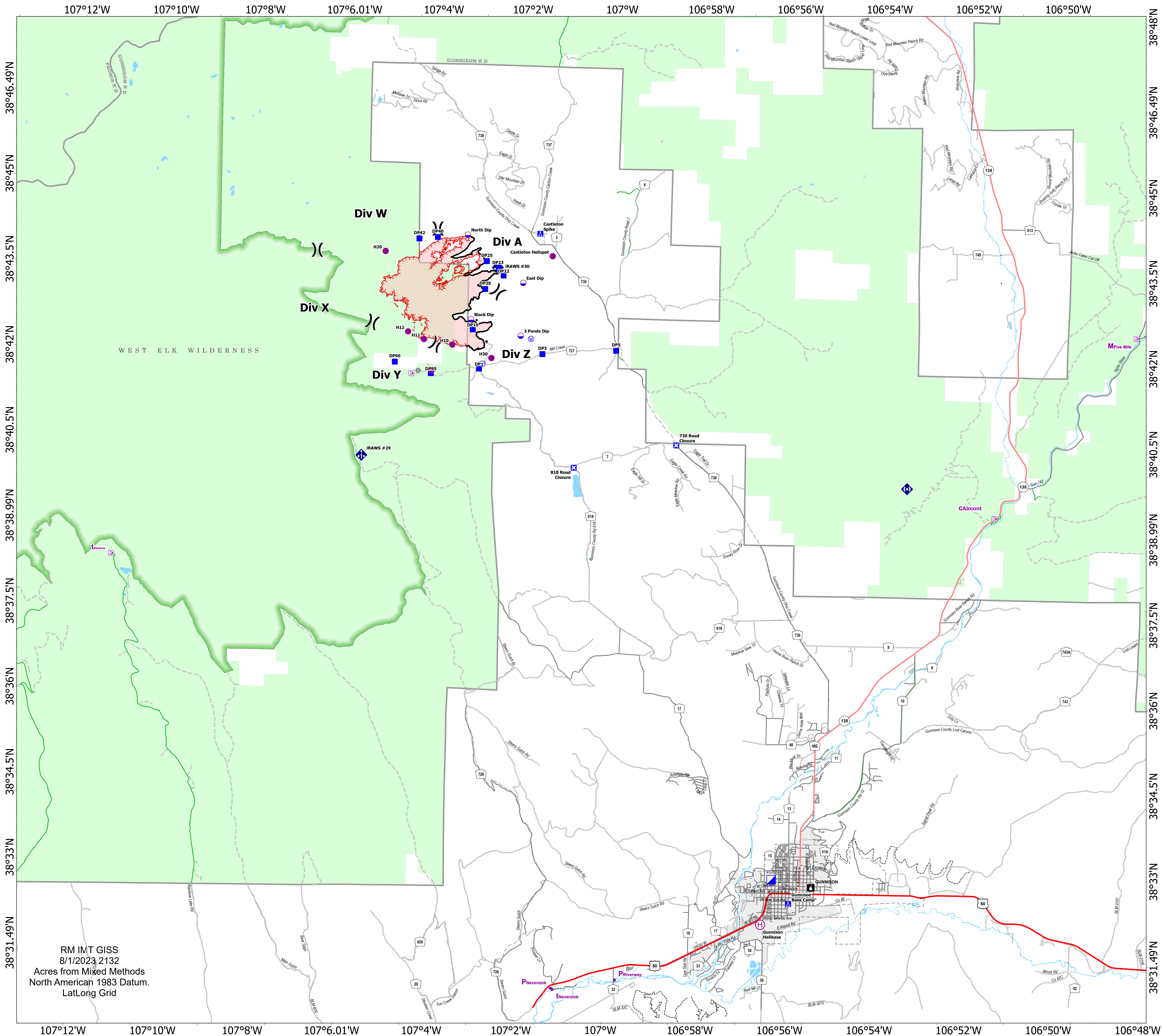
Transportation

Lowline
COGMF000176
8/2/2023

1,693 acres at 8/1/2023 @ 1400



- Dip Site
- Helispot
- ⊕ Helibase
- ⌘ Division Break
- 🚒 Incident Command Post
- Drop Point
- 🚧 Closure
- 🏠 Camp
- ⚡ Bridge
- 🌬 Mobile Weather Unit
- 📡 Repeater
- 💧 Water Source
- 🔴 Wildfire Daily Fire Perimeter
- Contained
- 🔴 Uncontained
- 🏠 RANGER DISTRICT OFFICE
- 📍 Trail Head
- 🛣 Primary Highway
- 🛣 Secondary Highway
- 🛣 Secondary Paved
- 🛣 County Road (Dirt)
- 🛣 Secondary Dirt
- 🛣 National Trail USGS
- 🗺 Ranger District Boundary
- 🌲 FS Wilderness Boundary
- 🏘 Incorporated Place
- 🌲 Forest Service Land



RM IMT GISS
8/1/2023 2132
Acres from Mixed Methods
North American 1983 Datum.
LatLong Grid