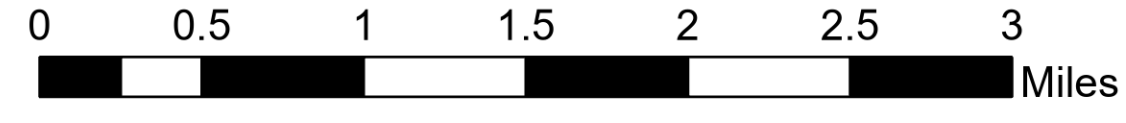


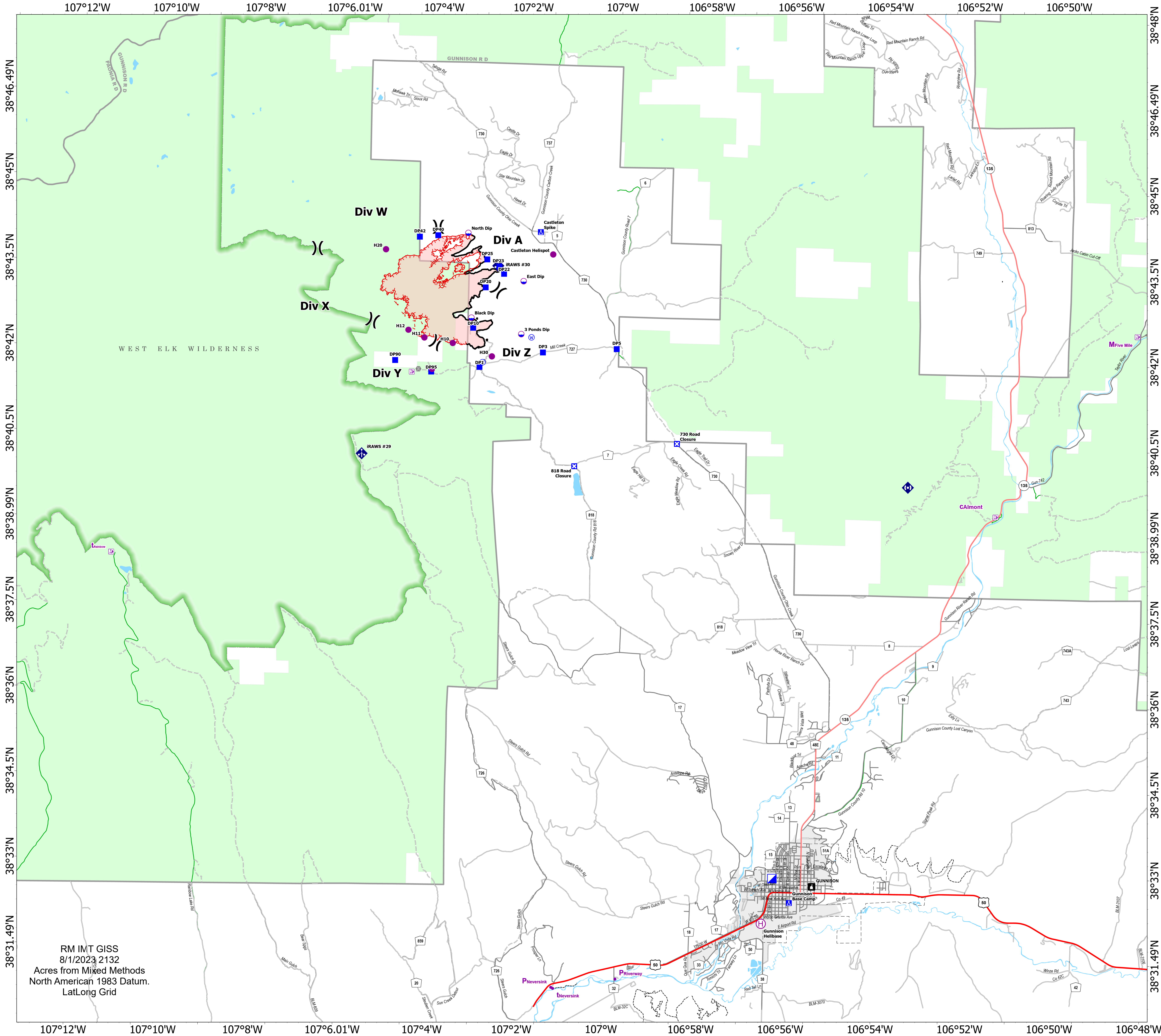
Transportation

Lowline
COGMF000176
8/2/2023

1,693 acres at 8/1/2023 @ 1400



- Dip Site
- Helispot
- ⊕ Helibase
- ⌘ Division Break
- ▣ Incident Command Post
- Drop Point
- ⊠ Closure
- Ⓜ Camp
- Bridge
- ⚡ Mobile Weather Unit
- ⚡ Repeater
- ⊙ Water Source
- ▭ Wildfire Daily Fire Perimeter
- Contained
- - - Uncontained
- ▣ RANGER DISTRICT OFFICE
- ⊙ Trail Head
- Primary Highway
- Secondary Highway
- Secondary Paved
- County Road (Dirt)
- Secondary Dirt
- - - National Trail USGS
- ▭ Ranger District Boundary
- ▭ FS Wilderness Boundary
- ▭ Incorporated Place
- ▭ Forest Service Land



RM IMT GISS
8/1/2023 2132
Acres from Mixed Methods
North American 1983 Datum.
LatLong Grid