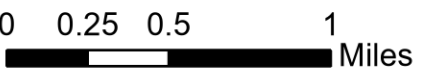
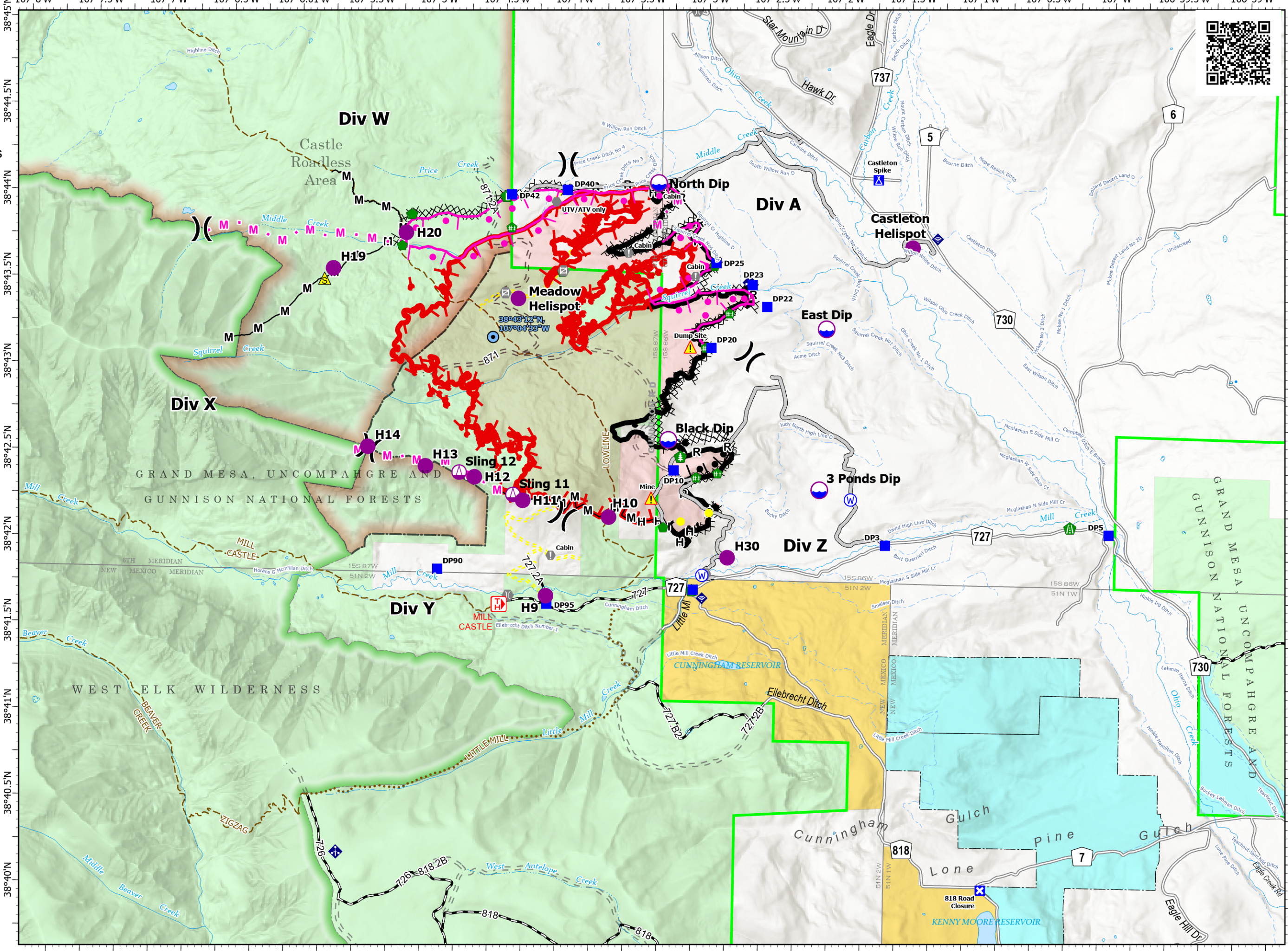


Pilot Map

Lowline
COGMF000176
8/3/2023
1,770 acres at 8/2/2023 @ 1400



- TFR Center - Radius: 7 nautical miles.
- Dip Site
- Helispot
- Sling Site
- Division Break
- Drop Point
- Closure
- Camp
- Value at Risk
- Other
- Gate
- Bridge
- Road Repair
- Repair Point
- Hazard Tree
- Fence - Cut/Damaged
- Dozer Push
- Clean Up Area
- Mobile Weather Unit
- Internet Access
- Safety Zone
- Hazard
- Water Source
- Completed Burnout
- Completed Dozer Line
- Completed Hand Line
- Completed Mixed Construction Line
- Completed Road as Line
- Planned Burnout
- Planned Mixed Construction Line
- Access or Improved Road
- Highlighted Feature
- Contained
- Uncontained
- Wildfire Daily Fire Perimeter
- Ditches
- Forest Service Land
- State Lands
- Bureau of Land Management Lands
- Administrative FS Boundary
- Ranger District Boundary
- FS Wilderness Boundary
- Colorado Roadless Area
- TRAILHEAD
- County or Secondary Road
- Open Road (FS)
- Decommissioned/Closed Road
- Decom/Converted Roads
- ATV/UTV Trail (Non-Public)
- Stream/River
- Stream/River Intermittent
- Lake / Pond
- Lake / Pond (Intermittent)



RM IMT GISS
8/2/2023 2147
Acres from Mixed Methods
North American 1983 Datum.
LatLong Grid