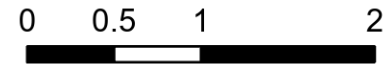


# Public Information

Lowline  
COGMF000176  
8/3/2023

1,770 acres at 8/2/2023 @ 1400

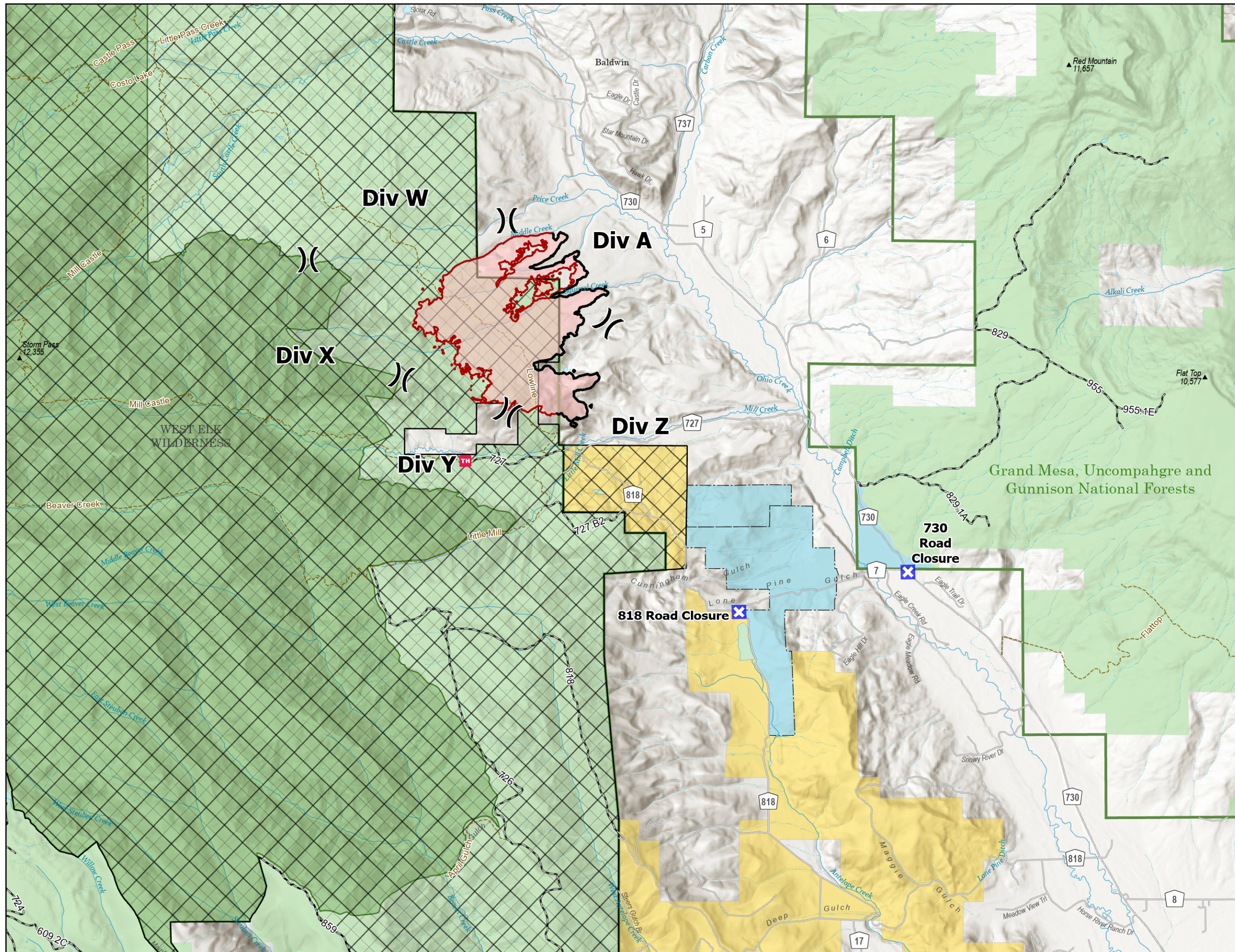
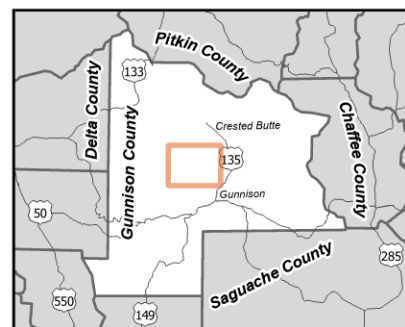


Miles

- Division Break
- Road Closure
- Contained
- Wildfire Perimeter
- Closure Area

- Recreation Site
- Trail
- Open Road
- County Road
- State Lands
- Bureau of Land Management Lands
- Forest Service Land
- FS Wilderness Boundary
- USFS Boundary

For more information about the Forest Closure scan



8/2/2023 2147  
Acres from Mixed Methods  
North American 1983 Datum. LatLong Grid  
Esri, NASA, NGA, USGS, FEMA