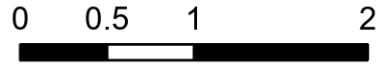


Public Information

Lowline
COGMF000176
8/5/2023

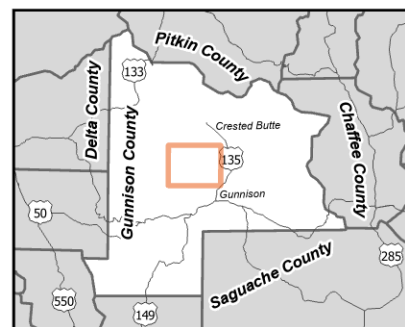
1,814 acres at 8/4/2023 @ 1630hrs



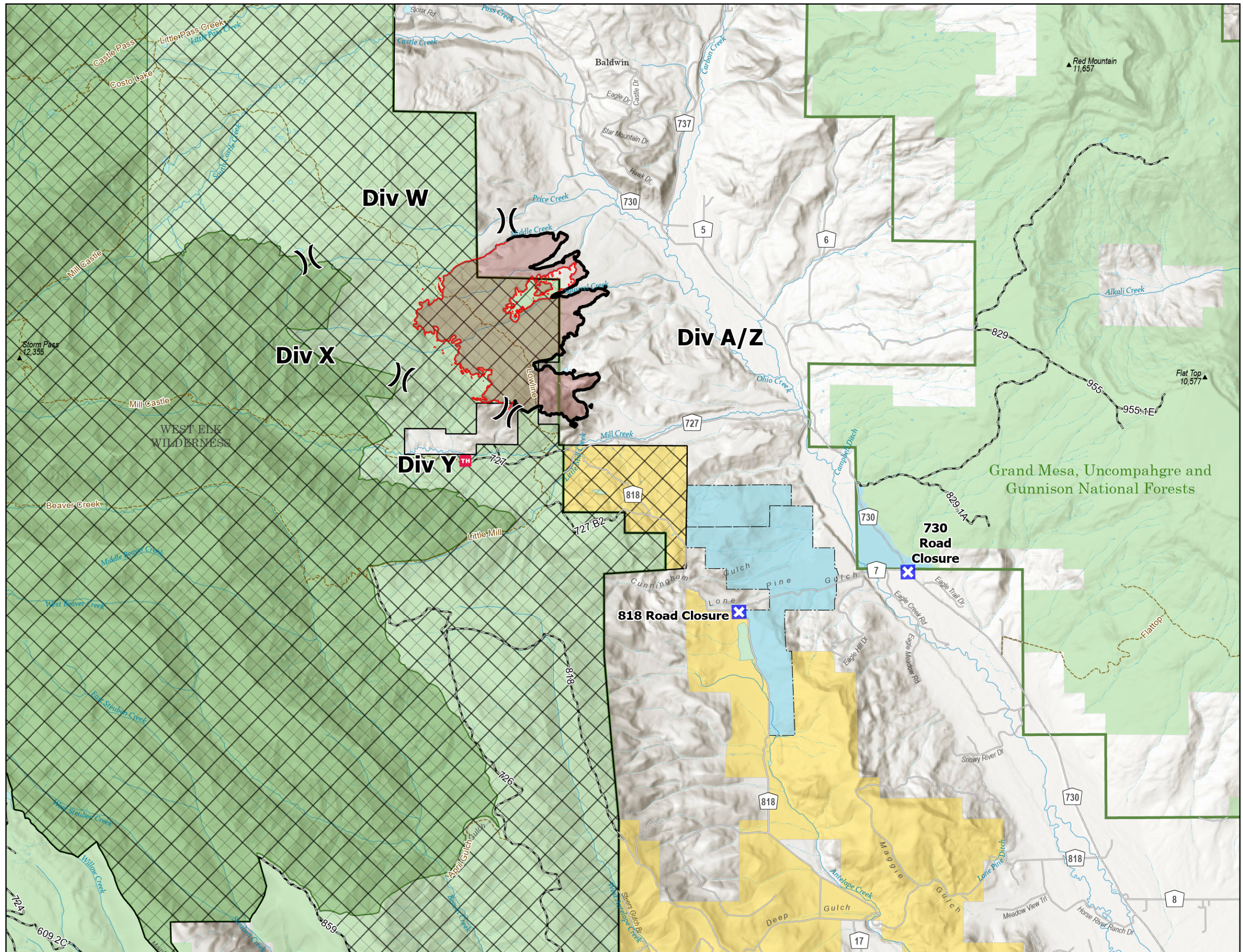
Miles

- Division Break
- Road Closure
- Contained
- Wildfire Perimeter
- Closure Area
- Recreation Site
- Trail
- Open Road
- County Road
- State Lands
- Bureau of Land Management Lands
- Forest Service Land
- FS Wilderness Boundary
- USFS Boundary

For more information about the Forest Closure scan



8/4/2023 2039
Acres from Mixed Methods
North American 1983 Datum. LatLong Grid
Esri, NASA, NGA, USGS, FEMA



Grand Mesa, Uncompahgre and Gunnison National Forests