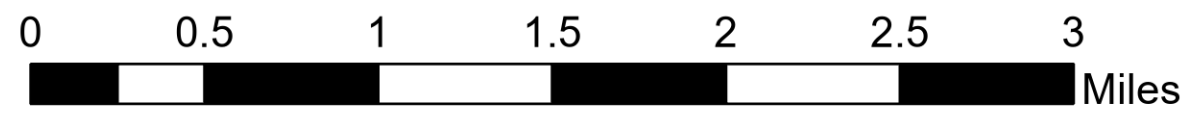


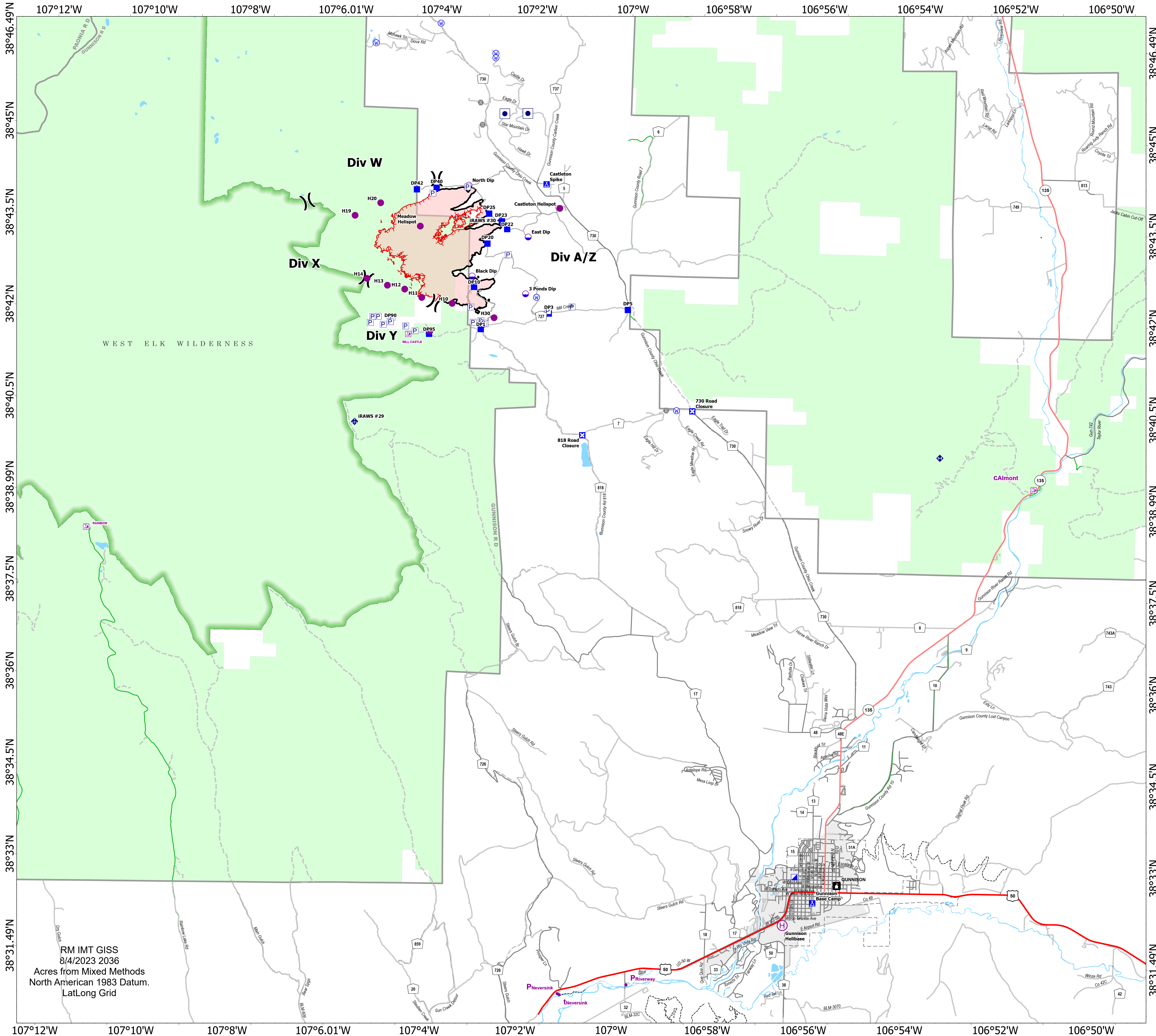
Transportation

Lowline
COGMF000176
8/5/2023

1,814 acres at 8/4/2023 @



- Label Point
- Other Property
- Pump
- Dip Site
- Helispot
- Helibase
- (Division Break
- Incident Command Post
- Drop Point
- Closure
- Camp
- Bridge
- Mobile Weather Unit
- Repeater
- Water Source
- Access or Improved Road
- Contained
- Uncontained
- Wildfire Daily Fire Perimeter
- RANGER DISTRICT OFFICE
- Trail Head
- Recreation Site; Primitive Camping
- RANGER DISTRICT OFFICE
- Trail Head
- Recreation Site; Primitive Camping
- Primary Highway
- Secondary Highway
- Secondary Paved
- County Road (Dirt)
- Secondary Dirt
- Paved Road
- Dirt (Not Paved)
- Road, Not Maintained for Passenger Car
- <all other values>
- National Trail USGS
- Primary Highway
- Secondary Highway
- Secondary Paved
- County Road (Dirt)
- Secondary Dirt
- Paved Road
- Dirt (Not Paved)
- Road, Not Maintained for Passenger Car
- <all other values>
- National Trail USGS
- Ranger District Boundary
- FS Wilderness Boundary
- Ranger District Boundary
- FS Wilderness Boundary
- Incorporated Place
- Incorporated Place
- Bridge
- Tunnel
- Stream / River
- Lake / Pond
- Reservoir
- Bridge
- Tunnel
- Stream / River
- Lake / Pond
- Reservoir
- Forest Service Land
- Urban Area
- Forest Service Land
- Urban Area



RM IMT GISS
8/4/2023 2036
Acres from Mixed Methods
North American 1983 Datum.
LatLong Grid