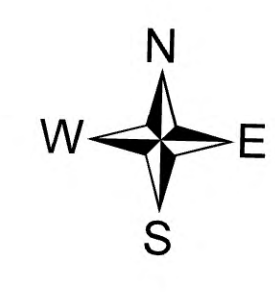


# Repair Imagery

Lowline  
COGMF000176  
8/8/2023

1,830 acres at 8/6/2023 @ 2249 hrs



## Div W

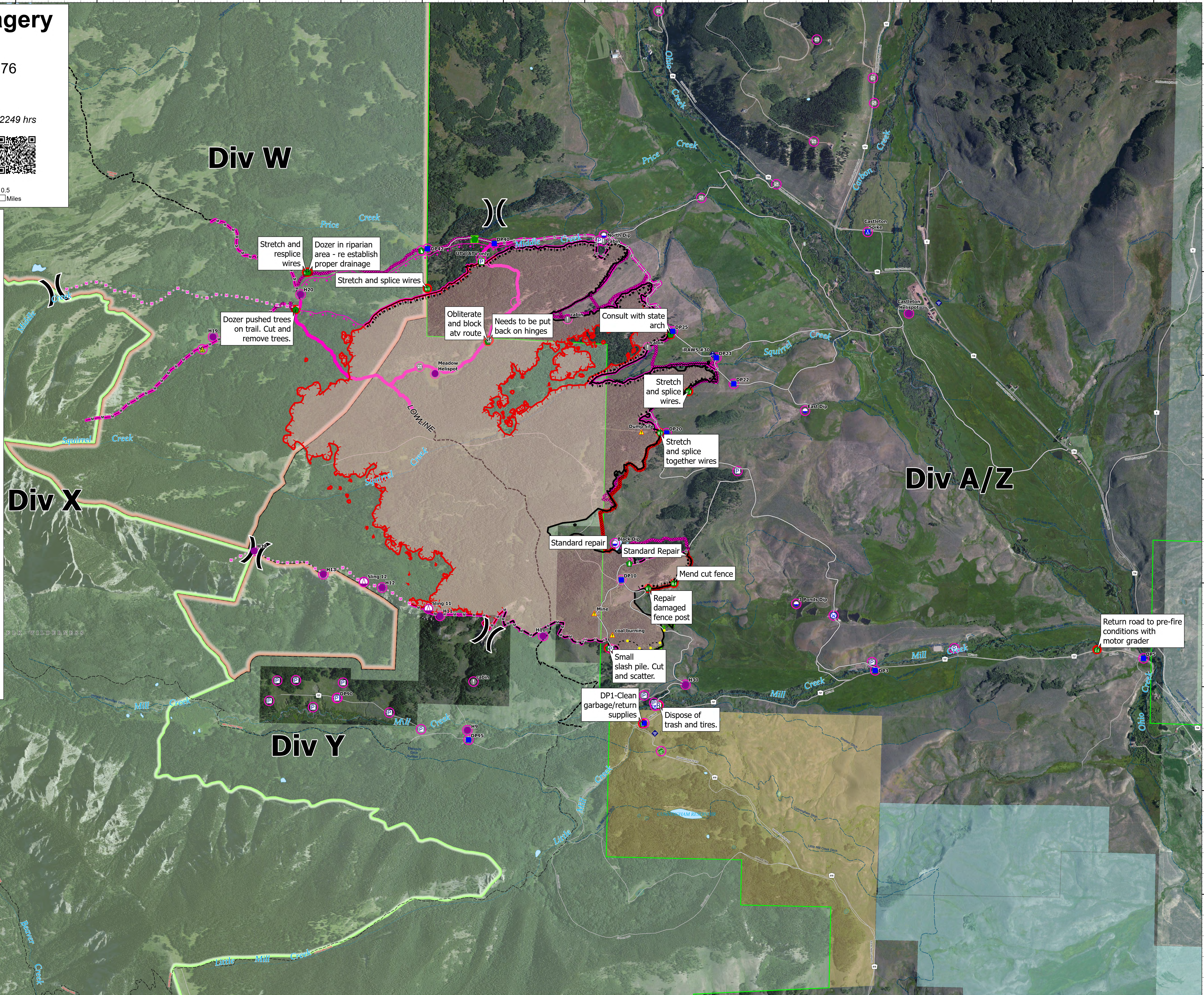
## Div X

## Div Y

## Div A/Z

- Other Property
- Pump
- Water Tank
- Aerial Hazard
- Aviation Check Point
- Dip Site
- Mobile Retardant Base
- Hotspot
- Hillbase
- Slag Site
- Unimproved Landing Area
- Division Break
- Branch Break
- Zone Break
- Medical
- Incident Command Post
- Drop Point
- Chowline
- Camp
- Staging Area
- Lookout
- Hot Spot - Spot Fire
- Fire Origin
- Value at Risk
- Other
- Landmark
- Gate
- Fire Station
- Bridge
- Water Development or Draft Site
- Structure Wreck
- Stream Crossing
- Road Repair
- Retardant in Avoidance Area
- Resource Location
- Repair Point
- Landing or Log Deck
- Hazard Tree
- Fence - Cut/Damaged
- Downed Path
- Culvert
- Clean Up Area
- Mobile Weather Unit
- Internet Access
- Regulator
- Safety Zone
- Hazard
- Water Source
- Restricted Water Source
- Completed Burnout
- Completed Dozer Line
- Completed Fuel Break
- Completed Hand Line
- Completed Head Construction Line
- Completed Row Line
- Completed Road as Line
- Planned Burnout
- Planned Dozer Line
- Planned Hand Line
- Planned Head Construction Line
- Planned Row Line
- Planned Road as Line
- Planned Secondary Line
- Access or Improved Road
- Fence
- Highlighted Feature
- Management Action Point
- Other
- Repair Line
- Escalation
- Escape Route
- Aerial Hazard
- Water Drop
- Foam Drop
- Retardant Drop
- Aviation Hazard
- USA Launch and Recovery Zone
- Temporary Flight Restriction
- Fire Edge (Field Collectors)
- Contained
- Uncollected
- Other
- Prescribed Fire
- Wildfire Daily Fire Perimeter
- In Use - Fire Management
- Needs Assessment
- Repair Needed
- In Progress
- Completed - Ready for Inspection
- Completed - Inspected
- No Repair Needed
- In Use - Fire Management
- Needs Assessment
- Repair Needed
- In Progress
- Completed - Ready for Inspection
- Completed - Inspected
- No Repair Needed
- Other - See Comments
- Trail
- Water Trail
- National Designated Water Trail
- Primary Highway
- Secondary Highway
- State Road (Dirt)
- County Road (Dirt)
- Primary Dirt
- Secondary Dirt
- Paved Road
- Gravel Road
- Dirt (Not Paved)
- Road, Not Maintained for Passenger Car
- Primary Highway
- Secondary Highway
- State Road (Dirt)
- County Road (Dirt)
- Primary Dirt
- Secondary Dirt
- Trail
- Water Trail
- National Designated Water Trail
- Proclaimed FS Boundary
- Administrative FS Boundary
- Ranger District Boundary
- FS Wilderness Boundary
- Cattle Roadless Area
- Ditch
- Underground Conduit
- Pipeline
- Restricted Underground
- Stream/River
- Stream/River Intersect
- Estuary
- Ice Mass
- Lake / Pond
- Lake / Pond (Intermittent)
- Reservoir
- Reservoir (Intermittent)
- Forest Service Land
- American Indian Lands
- State Lands
- Other Management Boundary
- U.S. Fish Wildlife Service Lands
- Bureau of Land Management Lands
- National Park Service Lands
- Other Federal Government Lands

RM IMT GISS  
8/7/2023 2145  
Acres from IR  
North American 1983 Datum, Lat/Long Grid



Stretch and resplice wires

Dozer in riparian area - re establish proper drainage

Stretch and splice wires

Dozer pushed trees on trail. Cut and remove trees.

Obliterate and block atv route

Needs to be put back on hinges

Consult with state arch

Stretch and splice wires.

Stretch and splice together wires

Standard repair

Standard Repair

Mend cut fence

Repair damaged fence post

Small slash pile. Cut and scatter.

DP1-Clean garbage/return supplies

Dispose of trash and tires.

Return road to pre-fire conditions with motor grader