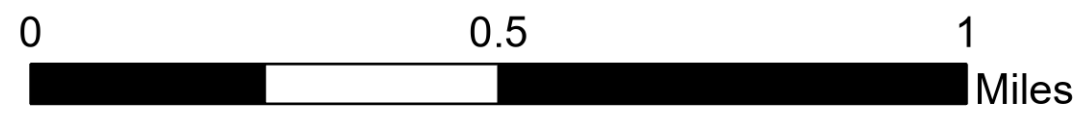
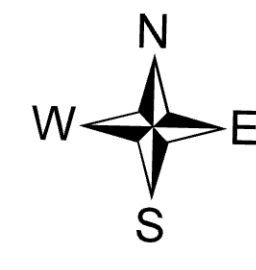


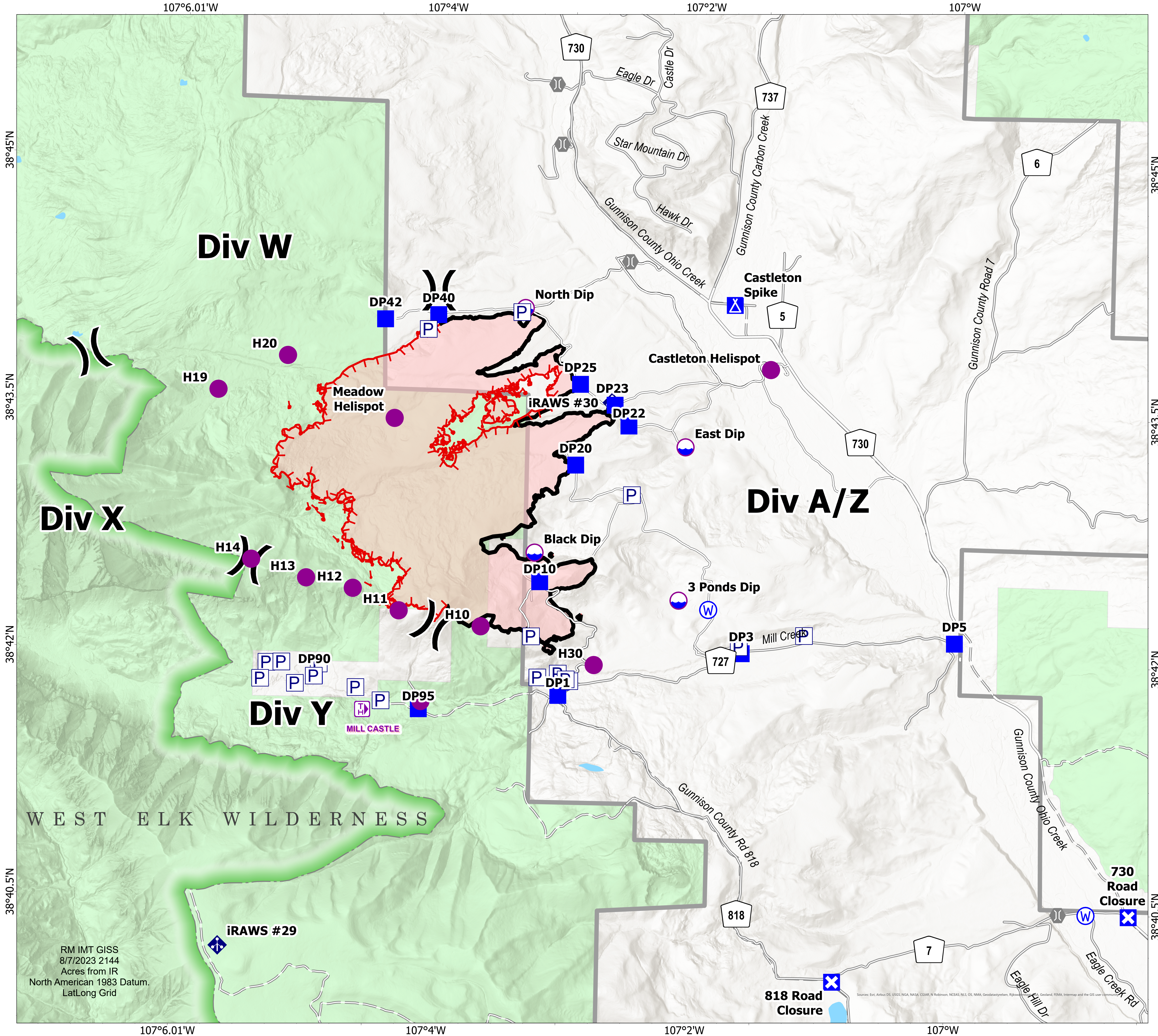
Transportation

Lowline
COGMF000176
8/8/2023

1,830 acres at 8/6/2023 @ 2249



- Dip Site
- Helispot
-) Division Break
- Drop Point
- Closure
- Camp
- Bridge
- Mobile Weather Unit
- Water Source
- Access or Improved Road
- Contained
- Uncontained
- Wildfire Daily Fire Perimeter
- Trail Head
- Secondary Paved
- County Road (Dirt)
- Secondary Dirt
- Dirt (Not Paved)
- Road, Not Maintained for Passenger Car
- ▭ Ranger District Boundary
- FS Wilderness Boundary
- Lake / Pond



WEST ELK WILDERNESS

RM IMT GISS
8/7/2023 2144
Acres from IR
North American 1983 Datum.
LatLong Grid

Sources: Esri, Airbus DS, USGS, NOAA, NASA, CGIAR, Robinson, NCEAS, NLS, OS, NOAA, Geodatasprehen, Rijksinstituut voor Milieu, GeoLand, FEMA, Intermap and the GIS user community