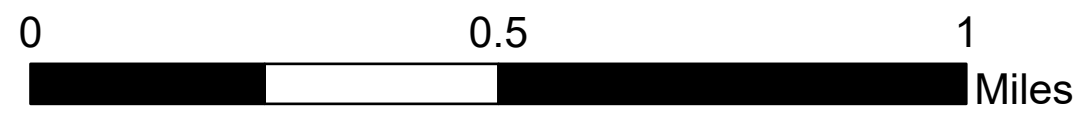
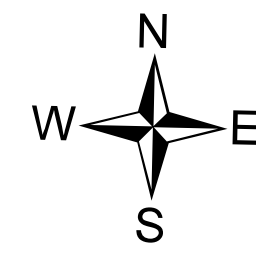


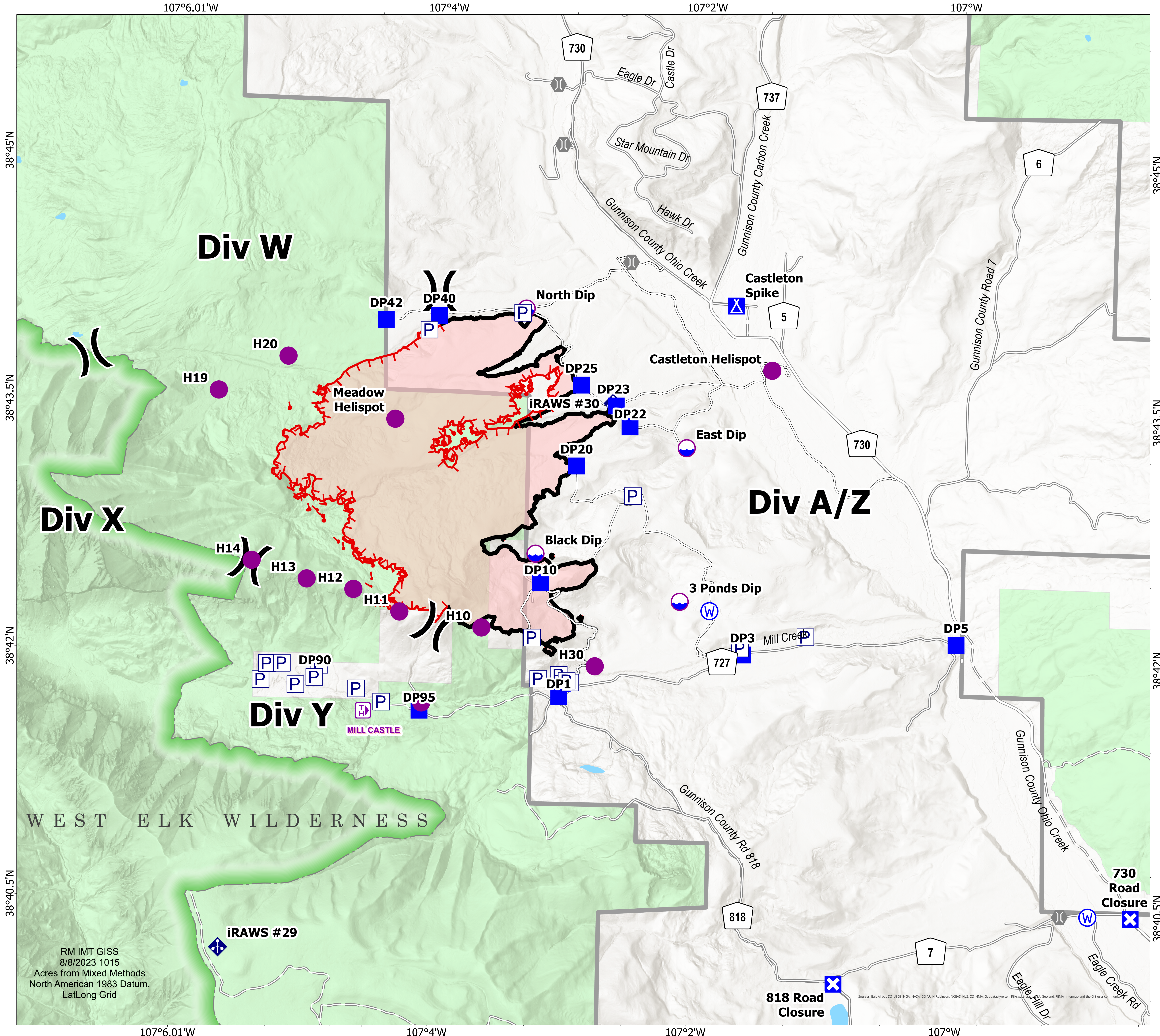
Transportation

Lowline
COGMF000176
8/8/2023

1,871 acres at 8/8/2023 @ 08:45



- Dip Site
- Helispot
-) Division Break
- Drop Point
- Closure
- Camp
- Bridge
- Mobile Weather Unit
- Water Source
- Access or Improved Road
- Contained
- Uncontained
- Wildfire Daily Fire Perimeter
- Trail Head
- Secondary Paved
- County Road (Dirt)
- Secondary Dirt
- Dirt (Not Paved)
- Road, Not Maintained for Passenger Car
- ▭ Ranger District Boundary
- FS Wilderness Boundary
- Lake / Pond



RM IMT GISS
8/8/2023 1015
Acres from Mixed Methods
North American 1983 Datum.
LatLong Grid

Sources: Esri, Arbus DS, USGS, NGA, NASA, EGA&R, N Robinson, NCEAS, NLS, OS, NMA, Geodatasystem, Rijksdienst voor het Cultureel Erfgoed, FEMA, Intermap and the GIS user community