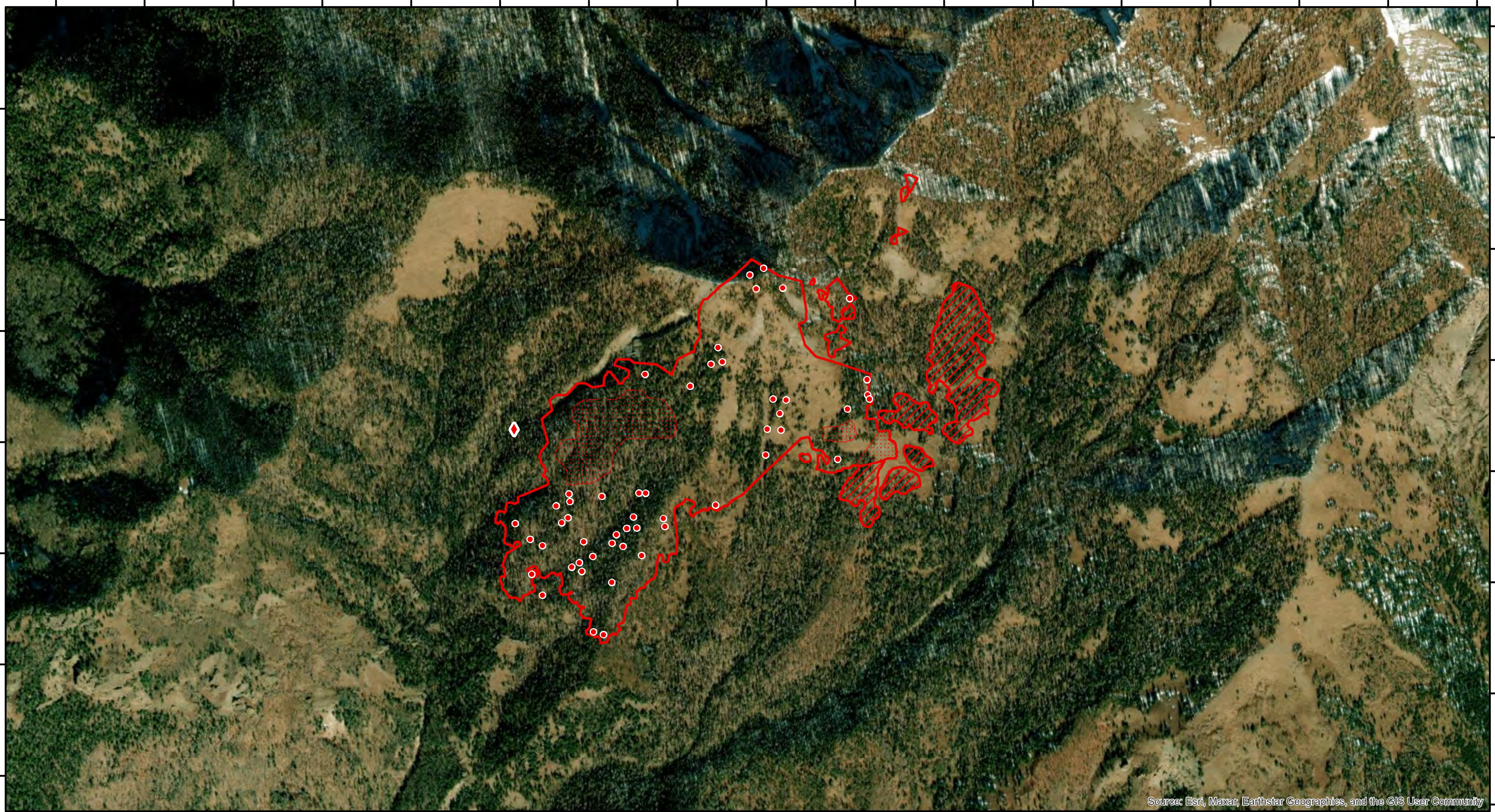


106°51'50"W 106°51'40"W 106°51'30"W 106°51'20"W 106°51'10"W 106°51'0"W 106°50'50"W 106°50'40"W 106°50'30"W 106°50'20"W 106°50'10"W 106°50'0"W 106°49'50"W 106°49'40"W 106°49'30"W 106°49'20"W 106°49'10"W

37°19'10"N  
37°19'00"N  
37°18'50"N  
37°18'40"N  
37°18'30"N  
37°18'20"N  
37°18'10"N

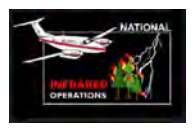
37°19'10"N  
37°19'00"N  
37°18'50"N  
37°18'40"N  
37°18'30"N  
37°18'20"N  
37°18'10"N



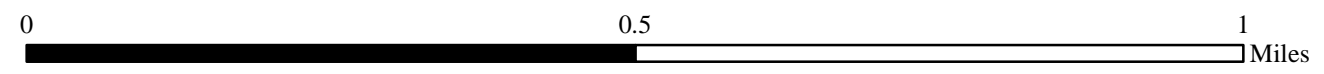
Source: Esri, Maxar, Earthstar Geographics, and the GIS User Community

106°51'50"W 106°51'40"W 106°51'30"W 106°51'20"W 106°51'10"W 106°51'0"W 106°50'50"W 106°50'40"W 106°50'30"W 106°50'20"W 106°50'10"W 106°50'0"W 106°49'50"W 106°49'40"W 106°49'30"W 106°49'20"W 106°49'10"W

**INFRARED MAP**  
**MILL CREEK 2**  
**CO-SJF-001183**  
Infrared (Interpreted) Acres: 146  
November 6, 2023 @ 1956 MST



*IRIN: Cheron Ferland*  
*Duluth, MN*  
*Nad 83 Zone 13*



- IR Isolated Heat Source
- ◆ Possible IR Heat Source
- IR Heat Perimeter
- IR Intense Heat
- IR Scattered Heat