

BEAR CREEK

CO-SJF-000570

P2 QJC4 (0213)

QUARTZ RIDGE

CO-SJF-000678

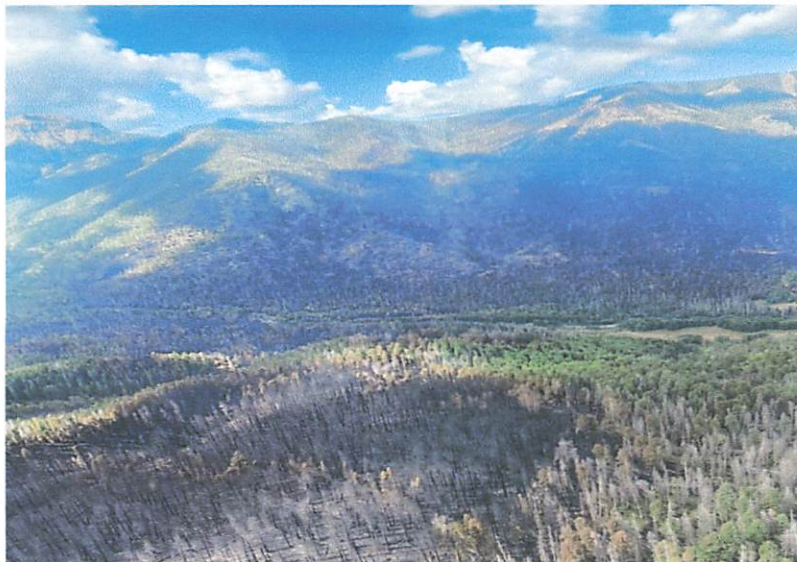
P2 QH39 (0213)

INCIDENT ACTION PLAN

08/27/2023

Day 0700-2200

Nick Collard IC / Grif Cochran IC (T)



Linktree QR

IAP's Map's & Finance Docs

LAST CATERER MEAL 8/28 LUNCH

LAST SHOWER 8/28 0900

**PLACE ANY CACHE ORDERS BY 8/27
0800**

LOGISTICS INFORMATION

Meal Times:

Breakfast 0630-0830

Dinner 1900-2100

Shower Hours:

0530-1200 & 1400-2200

INCIDENT OBJECTIVES (ICS 202)

1. Incident Name:		2. Operational Period: DAY	
QUARTZ RIDGE / BEAR CREEK		Date/Time From: 08/27/2023 0700 SUN	Date/Time To: 08/27/2023 2100 SUN
3. Objective(s):			
<p>OBJECTIVES FOR FIREFIGHTER AND PUBLIC SAFETY Safety of Firefighters and the public will be the highest priority throughout all phases of the incident. Manage the risk to fire fighters and the public by utilizing a risk-based approach to decision making. Ensure quality tradeoff conversations occur with Agency Administrators, partners, and stakeholders.</p> <p>OBJECTIVES FOR PROTECTION OF VALUES AT RISK Utilize appropriate fire strategies to minimize fire impacts to critical community infrastructure, private lands and improvements to reduce the potential for adverse health, social, financial, and economic hardships. These include:</p> <ul style="list-style-type: none"> • Private lands and infrastructure within the Weminuche Creek and East Fork San Juan River drainages • Powerlines and gas utility lines serving these communities • Smoke impacts to local communities and US Highway 160 • Natural resources, cultural and historic sites and recreationists and opportunities within the planning area • Observe fire progression in relation to M.A.P.S. provided in the long term management strategy, take action as necessary <p>OBJECTIVES FOR INFORMATION AND RELATIONSHIPS Maintain and enhance relationships with cooperators, stakeholders, the local community and adjoining agencies through effective, honest, and timely communication, engagement, and information sharing. Implement strategies that minimize the impact of smoke to sensitive areas and receptors by adjusting tactics, monitoring smoke impacts, and following guidance in state smoke management plans and coordinating with state and local Air Quality Control Commission.</p>			
4. Operational Period Command Emphasis:			
<p>COMMAND EMPHASIS: 1. Manage risk to firefighters by ensuring hazards are identified, assessed, and mitigated to the highest degree possible. Be prepared to accept residual responder risk when probability of success is high enough to warrant actions that protect important values at risk.</p> <p>General Situational Awareness:</p>			
<p>5. Site Safety Plan Required? Yes <input type="checkbox"/> No <input checked="" type="checkbox"/></p> <p>Approved Site Safety Plan(s) Located</p>			
6. Incident Action Plan (the items checked below are included in this Incident Action Plan):			
<input checked="" type="checkbox"/> ICS 202 <input type="checkbox"/> ICS 207 <input checked="" type="checkbox"/> ICS 203 <input type="checkbox"/> ICS 208 <input checked="" type="checkbox"/> ICS 204 <input checked="" type="checkbox"/> ICS 220 <input checked="" type="checkbox"/> ICS 205 <input type="checkbox"/> Map/Chart <input checked="" type="checkbox"/> ICS 205A <input checked="" type="checkbox"/> Weather Forecast/Tides/Currents <input checked="" type="checkbox"/> ICS 206		Other Attachments: <input checked="" type="checkbox"/> FINANCE MESSAGE <input checked="" type="checkbox"/> INFORMATION <input type="checkbox"/> <input type="checkbox"/>	
7. Prepared by: NANCY MASTERS		Position/Title: PSC	Signature:
8. Approved by Incident Commander:		Name: NICK COLLARD	Signature:
ICS 202	IAP Page	Date/Time: 08/26/2023 1900	

Spot forecast for QUARTZ RIDGE...CO-SJF

.DISCUSSION...

The risk for afternoon showers and thunderstorms will continue on Sunday and Monday as residual moisture from prior storms remains in place. Lightning and heavy rain will be the main concerns. Winds should mostly be light and terrain driven, but can become gusty and erratic near showers and storms. Drier conditions start moving in by the middle of the week, but an isolated storm or two is still not ruled out. The next monsoon surge arrives Friday into the weekend with more widespread showers and storms a decent bet.

.SUNDAY...

Sky/weather.....Becoming mostly cloudy (75-85 percent). Showers and thunderstorms likely, mainly after 1200.
Max temperature.....70-75.
Min humidity.....35-45 percent.
Wind (20 ft).....Downslope/down valley winds < 5 mph until 1000, then becoming upslope/up valley 5 to 10 mph with a few gusts to 15 mph in the afternoon. Gusty and erratic winds expected near thunderstorms.
Haines Index.....4 or low.
LAL.....1 until 0900, then 3 until 1200, then 4 until 1500, then 5 until 1600, then 4.
Transport winds.....Northwest 10 mph.

.SUNDAY NIGHT...

Sky/weather.....Becoming partly cloudy (45-55 percent). Chance of showers and thunderstorms, mainly before 2400.
Min temperature.....45-50.
Max humidity.....75-85 percent.
Wind (20 ft).....Winds becoming downslope/downvalley < 5 mph overnight. Gusty and erratic winds expected near thunderstorms during the evening.
Haines Index.....4 or low.
LAL.....4 until 2400, then 3.
Transport winds.....Northeast 10 mph.

.MONDAY...

Sky/weather.....Becoming mostly cloudy (75-85 percent). Showers and thunderstorms likely, mainly after 1200.
Max temperature.....70-75.
Min humidity.....35-45 percent.
Wind (20 ft).....Downslope/downvalley winds < 5 mph until 1000, then becoming upslope/upvalley 5 to 10 mph with a few gusts to 15 mph in the afternoon. Gusty and erratic winds expected near thunderstorms.
Haines Index.....5 or moderate.
LAL.....1 until 0900, then 3 until 1200, then 5.
Transport winds.....Northwest 5 mph.

.FORECAST DAYS 3 THROUGH 5...

.TUESDAY...

Mostly cloudy. Chance of showers and thunderstorms. Lows in the upper 40s. Highs in the lower 70s. Northeast winds 10 mph.

.WEDNESDAY...

Partly sunny. Chance of showers and thunderstorms. Lows in the upper 40s. Highs in the lower 70s. Southwest winds 10 mph.

.THURSDAY...

Partly sunny. Chance of showers and thunderstorms. Lows in the upper 40s. Highs in the lower 70s. Southeast winds 10 mph.

Spot forecast for BEAR CREEK...CO-SJF

.DISCUSSION...Lingering showers in the vicinity of the fire near sunrise on Sunday will be possible. Storms will refire by late morning over the higher terrain and move near the fire through the day as moisture still lingers over the eastern San Juans. The cloud cover looks to keep winds on the lighter side and mostly tied to the terrain. Gusty winds near storms however will always be a threat. Drier conditions move in to start the week but one more day of storms near the fire will be probable on Monday. Dry conditions through mid to late week will change by Friday into the weekend as the next monsoon surge arrives.

.SUNDAY...

Sky/weather.....Mostly cloudy (60 percent) through 1100 then becoming cloudy (85-95 percent). Chance of rain showers and slight chance of thunderstorms in the morning, then rain showers with thunderstorms likely in the afternoon.
Max temperature.....65-70.
Min humidity.....37-42 percent.
Wind (20 ft).....Northwest wind 3 to 8 mph increasing to 7 to 12 mph by 1200. Gusty and erratic winds expected near thunderstorms.
Haines Index.....4 or low.
LAL.....1 until 1100, then 4.
Transport winds.....Northwest 10 mph.
CWR.....70 percent.

.SUNDAY NIGHT...

Sky/weather.....Mostly cloudy (55-65 percent) then becoming partly cloudy (40-50 percent). Chance of showers and thunderstorms in the evening.
Min temperature.....49-54.
Max humidity.....66-71 percent.
Wind (20 ft).....Downvalley winds 5 to 8 mph. Gusty and erratic winds expected near thunderstorms.
Haines Index.....3 or very low.
LAL.....4 until 2300, then 1.
Transport winds.....North 10 mph.
CWR.....10 percent.

.MONDAY...

Sky/weather.....Sunny (15-25 percent). Becoming partly sunny (65-75 percent) by 1200 with a chance of showers and thunderstorms in the afternoon.
Max temperature.....71-76.
Min humidity.....24-29 percent.
Wind (20 ft).....Northwest winds 5 to 10 mph. Gusty and erratic winds expected near thunderstorms.
Haines Index.....5 or moderate.
LAL.....1 until 1200, then 3.
Transport winds.....Northwest 10 mph.
CWR.....10 percent.

.FORECAST DAYS 3 THROUGH 7...

.TUESDAY...

Partly cloudy. Chance of showers and thunderstorms. Lows around 50. Highs in the mid 70s. North winds 5 mph.

.WEDNESDAY...

Mostly clear. Slight chance of showers and thunderstorms. Lows in the upper 40s. Highs in the mid 70s. Northwest winds 5 mph.

.THURSDAY...

Partly cloudy. Chance of showers and thunderstorms. Lows in the lower 50s. Highs in the mid 70s. Northwest winds 10 mph.

.FRIDAY...

Mostly cloudy. Chance of showers and thunderstorms. Lows in the lower 50s. Highs in the lower 70s.

.SATURDAY...

Partly cloudy. Chance of showers and thunderstorms. Lows in the lower 50s. Highs in the lower 70s.

FIRE BEHAVIOR FORECAST			
FORECAST NUMBER	16	TYPE OF FIRE	Wildfire
FIRE NAME	Quartz Ridge, Bear Creek	OPERATIONAL PERIOD	08/25-8/28/2023
DATE ISSUED	08/24/2023	TIME ISSUED	18:00
UNIT	CO-SJF	SIGNED	Cary Newman THSP
INPUTS			
WEATHER SUMMARY:			
<p>Critical fire weather conditions are not expected over the four-day period. Humidities will remain above 30% and overnight recoveries will be good to excellent. Sunshine will provide for good instability and cloud cover each day with chances for isolated to scattered thundershowers. Winds will be generally light and less than 10 with gusts to 15-18.</p> <p>See Fire Weather Forecast</p>			
FUELS SUMMARY:			
<p>Fuels in the fire area are composed primarily of timber with understory (mixed conifers with heavy litter and aspen stands). Heavy fuel concentrations of standing snags and large down dead are common in timbered areas. It is likely for fire to spread in concentrations of surface dead and down fuels which is promoting torching and spotting into receptive surface fuel beds. Aspen stands are currently retarding fire spread. Live surface fuels of grasses and forbs and brush are not promoting spread.</p>			
OUTPUTS			
FIRE BEHAVIOR			
General:			
<p>Fire activity on the Bear Creek or Quartz Ridge fires will be dependent on how much sunshine either fire receives on any given day. Relative humidities will remain high enough and winds will be light enough that rapid spread is not expected except on steep slopes where fuels are continuous and only after an extended period of sunshine. Periods of cloud cover in the afternoon will help to moderate fire activity. There remain chances for thunder showers each day and the potential for brief periods of isolated heavy rainfall. Days with the highest chances for rainfall are Saturday and Monday. Relative humidity recovery will be good to excellent overnight each night. Fire in concentrations of heavy fuels will continue to burn and may spread at a moderate rate with occasional isolated single or group tree torching. Spot fires may become established and spread at a slow rate. Spread will be slow to non-existent in areas with a high proportion of aspen and in aspen stands.</p>			
Specific:			
Quartz Ridge			
<p>The RAWs in Quartz Meadow has not received measurable precipitation since 8/17. High humidities and cloud cover have kept fire activity subdued since 8/23. In the absence of cloud cover or rain fire activity will continue in concentrations of heavy fuels on the south side of the fire in Quartz Creek on either side of the creek. Expect the fire to be most active on Friday and Sunday as the chances of precipitation will be lowest on those days.</p>			
Bear Creek			
<p>The Bear Creek fire has received precipitation within the last few days and remains quiet with a few smokes visible. Recently the rainfall pattern has been for the Bear Creek fire to receive rain when the Quartz Ridge fire has not. If this pattern continues little fire activity is expected on the Bear Creek fire.</p>			
SAFETY			
<p>Situational Awareness is a continuous process that is best accomplished with group input. Invariably others will recognize factors that you may overlook, and communication will be key. Use all your available tools to gather information to increase yours and your crews' awareness.</p>			


Division/Group Assignment List (ICS 204 WF)
Controlled Unclassified Information//Basic

1. Incident Name:				3.			
QUARTZ RIDGE / BEAR CREEK				Branch:		Division/Group	
2. Operational Period: DAY				E (QUARTZ RIDGE)			
Date/Time From: 08/27/2023 0700 SUN		Date/Time To: 08/27/2023 2100 SUN					
4. Operations Personnel							
OPERATIONS CHIEF BRIAN AUSTIN				DIVISION/GROUP SUPERVISOR JOE BURGETT (9-6)			
5. Resources Assigned this Period							
Strike Team / Task Force / Resource Designator		LWD	Leader	Number Persons	Drop Off PT./Time	Pick Up PT./Time	
CR2I DEVILS CANYON C-6		09/05	CHRIS MERRITT	17	ICP/0700	ICP/2200	
ENG6 BLUFFDALE E-16		09/02	JOHN BEAL	3	ICP/0700	ICP/2200	
ENG6 LONE ELK FIRE E-55		09/02	RON CLARK	2	ICP/0700	ICP/2200	
AMBU FIRESIDE MEDICS E-11(B)		08/30	ROSS BYRD	2	ICP/0700	ICP/2200	
6. Control Operations/Work Assignments:							
<p>Task Continue to assess and identify mitigation needs to protect the values at risk within the East Fork Ranch. Assess fire behavior & track progress towards MAPs taking actions as indicated.</p> <p>Purpose To minimize threat to values within strategic action area.</p> <p>End State Proposed strategic control lines are secured and the fire no longer threatens values at risk or fire line personnel and public safety.</p> <p>TASK: Construct shaded fuel break along FS 684 between East Fork Ranch and Quartz Meadow. PURPOSE: Reduce ladder fuels and concentrated heavy fuels to reduce chances of torching and spotting. END STATE: Continuous shaded fuel along FS 684 north from Quartz Meadow.</p>							
7. Special Instructions:							
<p>Contact OSC if READ need arises. Place orders for cache items prior to 1200 for same day delivery. Operate UTVs carefully when shuttling crews and continue to monitor road conditions for ingress/egress. Be aware of public vehicle traffic road ways. New Comm plans starting Monday 8/28.</p>							
8. Division/Group Communication Summary							
Function	Channel	RX Frequency N/W	RX Tone/NAC	TX Frequency N/W	TX Tone/NAC	Mode	
COMMAND		SEE COMM PLAN					
9. Prepared By (Resource Unit Leader)			Approved By (Planning Section Chief)		Date	Time	
LAURIE OLIVER			NANCY MASTERS		08/26/2023	1103	

Division/Group Assignment List (ICS 204 WF)
Controlled Unclassified Information//Basic

1. Incident Name:			3.			
QUARTZ RIDGE / BEAR CREEK			Branch:		Division/Group	
2. Operational Period: DAY					W (BEAR CREEK)	
Date/Time From: 08/27/2023 0700 SUN	Date/Time To: 08/27/2023 2100 SUN					
4. Operations Personnel						
OPERATIONS CHIEF BRIAN AUSTIN			DIVISION/GROUP SUPERVISOR JOE BURGETT			
5. Resources Assigned this Period						
Strike Team / Task Force / Resource Designator		LWD	Leader	Number Persons	Drop Off PT./Time	Pick Up PT./Time
WFM2 ELK CREEK O-17(B)		08/27	JAYSON PAPENFUS	10	ICP/0700	ICP/2200
ENG6 MOORE BR 49 E-15(B)		09/02	MARCI MOORE	3	ICP/0700	ICP/2200
ENG6 NATIONAL WILDLAND FIRE, LLC - 621 E-56		09/02	QUITO JUSTICE	3	ICP/0700	ICP/2200
EMPF O-21		09/06	HEATHER MIDKIFF-ALEXANDER	1	ICP/0700	ICP/2200
6. Control Operations/Work Assignments:						
<p>Task Provide surveillance of MAPs & take action as indicated. Patrol areas that threaten values at risk.</p> <p>Purpose Minimize impact to structures and values at risk.</p> <p>End State Fire does not pose a threat to any critical values within or adjacent to the division.</p>						
7. Special Instructions:						
<p>Contact OSC if READ need arises. Refer to the structure protection plans for the Weminuche Valley. Place orders for cache items prior to 1200 for same day delivery. Coordinate with logistics and drivers to ensure backhaul mission is completed. New Comm plans starting Monday 8/28.</p>						
8. Division/Group Communication Summary						
Function	Channel	RX Frequency N/W	RX Tone/NAC	TX Frequency N/W	TX Tone/NAC	Mode
COMMAND		SEE COMM PLAN				
9. Prepared By (Resource Unit Leader)			Approved By (Planning Section Chief)		Date	Time
LAURIE OLIVER			NANCY MASTERS		08/26/2023	1900

ORGANIZATION ASSIGNMENT LIST (ICS 203)

1. Incident Name:		2. Operational Period: DAY	
QUARTZ RIDGE / BEAR CREEK		Date/Time From: 08/27/2023 0700	Date/Time To: 08/27/2023 2100
		SUN	SUN
3. Incident Commander(s) and Command Staff:		OPS SECTION CHIEF	BRIAN AUSTIN
IC/UC	NICK COLLARD GRIF COCHRAN (T)		
INFORMATION OFFICER	DEAN HAZEN	DIVISION/GROUP	W BEAR CREEK JOE BURGETT
SAFETY OFFICER	THOMAS LUBAS	DIVISION/GROUP	E QUARTZ RIDGE JOE BURGETT
MEDICAL UNIT LEADER	FRANK ABLE	7b. Air Operations Branch:	
		AIR OPS BRANCH DIRECTOR	AUDREY HUSE
		HELICOPTER MANAGER	DAN FULLER
		AIR ATTACK SUPERVISOR	
		AIR SUPPORT SUPERVISOR	
		AIR TANKER COORDINATOR	
4. Agency/Organization Representative(s):		8. Finance/Administration Section:	
Agency/Organization	Name	CHIEF	DARLA PINDELL
USFS AA	CHAD STEWART JOSH PECK (T)	PTRC	MIRIAM HUBBARD (T)
ARCHULETA SHERIFF	MIKE LE ROUX	PROCUREMENT UNIT	
HINSDALE SHERRIFF	CHRIS KAMBISH	COMPENSATION UNIT	
MINERAL SHERIFF	TERRY WETHERILL		
SAN JUAN NF	DAVE NEELY		
CO DFPC	LOGAN DAVIS		
5. Planning Section:			
CHIEF	NANCY MASTERS		
DEPUTY	NICK YTURRI		
DOCUMENTATION UNIT	SPENCER POLLOCK (RIST)		
DEMOBILIZATION UNIT	LAURIE OLIVER		
TECHNOLOGY SUPPORT SPECIALIST	ERIC SIMMONS		
GIS SPECIALIST	GLENDA TORRES		
6. Logistics Section:			
CHIEF	ANDREW GOLDMAN		
BASE CAMP MNGR	PATRICK MCCOY		
FACILITIES UNIT	JASON BARNES JACK GOLDMAN (T)		
GROUND SUPPORT UNIT			
COMMUNICATIONS UNIT	JIM MIDYETT		
ORDERING MANAGER	CHELSEA JOHNSON		
SUPPLY UNIT			
FOOD UNIT	LINDA GUY		
7. Operations Section:			
9. Prepared By:	Name: NANCY MASTERS	Position/Title: PSC	Signature: 
ICS 203	IAP Page	Date/Time: 08/26/2023 1900	

AIR OPERATIONS SUMMARY

Prepared By: Audrey Huse

Prepared Date: 8/25/23

Prepared Time: 1300

1. INCIDENT NAME: Durango Zone	2. OPS PERIOD DATE: 08/27/23	START TIME: 0900	END TIME: 2000	SUNRISE: 0636	SUNSET: 1949
3. REMARKS (Safety Notes, Hazards, and Air Operations Special Equipment, etc.): HIGH HOT HEAVY CONDITIONS, SMOKE, HIGH WINDS, TURBULENCE. FOLLOW WIND LIMITATION PROTOCOLS WHEN CONDUCTING AIR OPERATIONS. Please send all aircraft costs for the Bear Crk/Quartz/ Mosca Fire to 2023.quartzridge.finance@firenet.gov Please Send all other Aircraft costs to codrc@firenet.gov			4. READY ALERT AIRCRAFT MEDEVAC: Any Available		5. TFR #:

6. PERSONNEL	NAME	PHONE #	7. FREQUENCIES	AM	FM	8. FIXED-WING- Type/ Make-Model/ N#/ Base
FAO	Audrey Huse	541-659-9812	A/A 1	127.325		AIRTANKERS -
DATB	David Hautamaki	970-590-2621	A/A 2	134.775		LEAD PLANES-
ASGS (T) NIMO	John Kinder	812-320-3000	A/A 3 A/A Quartz/Bear/Mosca	134.275 119.4500		AERIAL SUPERVISION-
			A/G 7		166.8500	ATGS/ AA203
			A/G 9		166.9125	SEATS-
OMW	Daniel Fuller	719-252-2350	A/G Bear Creek/Mosca		166.8750	Order through Durango Dispatch
			A/G Quartz Ridge		168.4000	

9. HELICOPTERS

FAA N#	TY	MAKE/ MODEL	BASE	START	AVAIL	REMARKS	FAA N#	TY	MAKE/ MODEL	BASE	START	AVAIL	REMARKS
N0MW	3	Astar B3	Pagosa	0800	0830	Bear Crk/AV IA							

10. TASK/ MISSION/ ASSIGNMENT (Type/ function includes: Air Tactical, Retardant, Recon, Personnel Transport, Bucket Operations, SAR, etc.)

TYPE/FUNCTION	NAME OF PERSONNEL OR CARGO (If applicable) or instructions for tactical aircraft	MISSION START	FLY FROM	FLY TO
Recon	As Requested	As Requested	Any Location	Fire
Bucket Support	As Requested	As Requested	Any Location	Fire
Troop Transport	As Requested	As Requested	Any Location	Fire
Aerial Supervision	Provide coverage as needed	As Requested	Durango	Fire
Supply Missions	As Requested	As Requested	Any Location	Fire

CUI

INCIDENT RADIO COMMUNICATIONS PLAN I-205			1. INCIDENT NAME	2. DATE/TIME PREPARED	3. OPERATIONAL PERIOD DATE/TIME			
			QUARTZ CREEK	08/25/23	8/27/23			
4. BASIC RADIO CHANNEL UTILIZATION								
Ch #	Channel Name	Assignment	RX Frequency	RX Tone/NAC	TX Frequency	TX Tone/NAC	Mode Digital (D) Analog (A)	Remarks
1	COMMAND 1	DIV E	169.75000	146.2	167.10000	146.2	A	Wolf Creek Pass Ski Area
2	COMMAND 2	DIV W	173.0375	146.2	167.3250	146.2	A	Sand Bench
3	COMMAND 3	DIV W	172.4250	146.2	162.1875	146.2	A	Cimmeron Peak
4	TAC 1	DIV E	166.77500	146.2	166.77500	146.2	A	
5	TAC 2	DIV E	168.25000	146.2	168.25000	146.2	A	
6	TAC 3	DIV W	166.7250	146.2	166.7250	146.2	A	
7	NOT IN USE							
8	NOT IN USE							
9	SCENE OF ACTION	TESTING	173.5375	110.9	163.4875	100	A	LINKED TO DURANGO DISPATCH
10	A/G PRIMARY	A/G PRI	168.40000	None	168.40000	None	A	QUARTZ A/G
11	A/G SECONDARY	A/G SEC	166.87500	None	166.87500	None	A	BEAR/MOSCA A/G
12	DEVIL MTN	USFS	173.53750	None	163.48750	123.0	A	
13	WOLF CREEK	USFS	173.53750	None	163.48750	136.5	A	
14	VFIRE 21	MUTUAL AID	154.28000	None	154.28000	156.7	A	
15	VMED 28	EMS	155.34000	None	155.34000	156.7	A	AIR AMBULANCE
16	AIRGUARD	EMERGENCY USE ONLY	168.62500	None	168.62500	110.9	A	EMERGENCY USE ONLY
ICS-205		JIM MIDYETT, COML	Current Clone Version:		082623		ALWAYS POST A HUMAN REPEATER TO RELAY MESSAGES OUT OF AREAS WHERE YOU DONT HAVE ADEQUATE COMMUNICATIONS	
Prepared By:			DPH:	Press & Hold # Key to Check Version				
			KNG:	Look at Zone Label				

Incident: Quartz Ridge, Bear Creek	Date Prepared 08/26/23	Operational Period 08/27/23
--	----------------------------------	---------------------------------------



SAFETY MESSAGE



Firefighter safety comes first on every fire, every time.

MAJOR HAZARDS

- ✓ **Snags** – Snags, widow makers, and green trees weakened by fire are significant hazards.
- ✓ **Driving** – Stay vigilant with heavy weekend traffic. Turn on headlights. Reduce speeds and drive defensively at all times.
- ✓ **Complacency** – Stay in the game! Even though the fire is not active, we still have an important job to do. Understand the “why” of your assignment and stay engaged.

DEMOB!

Here are a few items to think about before you go....

- Ensure your replacement resources get a thorough briefing. Take the time to set them up for success.
- Give your vehicles a solid inspection or stop at ground support and have them look it over to ensure they are ready for the road. Check the tires, clean the windows, make any needed repairs.
- Organize your gear and clean out the passenger compartment. Any unsecured items in the cab can become dangerous projectiles in the event of an accident.
- Change drivers often to ensure the operator is alert and focused. If you are by yourself, stop, stretch and take frequent breaks, adhere to your agency policy.
- The transition back to your normal “day to day” can be difficult. Make an effort to get your mind right to return to your home life!
- **For non fireline and off shift medical emergencies place a 911 call immediately to expedite transport and treatment.**

Tom Lubas, Safety Officer 307-299-6645

QUARTZ RIDGE/BEAR CREEK INCIDENT INFORMATION

Phone List			
POSITION	NAME	PHONE	
INCIDENT COMMANDER	NICK COLLARD	970-688-0079	
INCIDENT COMMANDER (T)	GRIF COCHRAN	307-921-8356	
OPERATIONS	BRIAN AUSTIN	209-840-0099	
SAFETY OFFICER	THOMAS LUBAS	307-299-6645	
QUARTZ RIDGE / BEAR CREEK	JOE BURGETT	303-548-0854	
INFORMATION	DEAN HAZEN	208-380-6981	
PLANS CHIEF	NANCY MASTERS	208-908-2805	
DEPUTY PLANS	NICK YTURRI	986-200-2780	
DMOB	LAURIE OLIVER	970-759-9611	
FINANCE	DARLA PINDELL	907-227-5641	
LOGISTICS CHIEF	ANDREW GOLDMAN	303-810-2815	
MEDICAL UNIT LEADER	FRANK ABEL	423-595-1578	
Meeting Schedule			
TIME	NEXT MTG DATE	PURPOSE	LOCATION
0700	Daily	Briefing	CLOMAN PARK
0900	Daily	C&G	ICP
0930	As Needed	Strategic Alignment	ICP
1030	8/30 (once a week)	Cooperators Meeting	ICP
1600	Daily	Tactics	ICP
1700	Daily	Planning	ICP

ICP Address: 3503 HWY 160 Pagosa Springs, CO 81147

Camp Cloman (camp & briefing) Address: 1608 Cloman Blvd Pagosa Springs, CO 81147

INFORMATION

PHONE LINE: 970-426-5370

E-MAIL: 2023.quartzridge@firenet.gov

INCIDENT E-MAILS

FINANCE: 2023.quartzridge.finance@firenet.gov / 2023.bearcreek.finance@firenet.gov

ORDERING: 2023.quartzridge.ordering@firenet.gov / 2023.bearcreek@firenet.gov

PLANS: 2023.quartzridge.plans@firenet.gov / 2023.bearcreek@firenet.gov

Public Information

We'd like to be able tell you story out in the field! The best way for us to do that is photos you can provide with a bit of the where and what. Doesn't matter which fire you are working, please send them to:

2023.QuartzRidge@firenet.gov

Quartz Ridge Fire:

InciWeb: <https://tinyurl.com/mr37bhnr>



Facebook: <https://tinyurl.com/y87cycm4>

Bear Creek Fire:

InciWeb: <https://tinyurl.com/mrx4pp27>



Facebook: <https://tinyurl.com/mr2tpj69>

In addition to the QR Codes: If someone can't scan the QR codes, they can go to the inciweb site <https://inciweb.wildfire.gov/>

Have you received an Evaluation?

Please turn in or email your evaluations to

2023.quartzridge.plans@firenet.gov



Evaluation forms can be found on the LinkTree QR Code.

DEMOB LIST

8/27	O-60	DOHERTY, MICHAEL J	DIVS
	O-12	JONES, JESSE THOMAS	DIVS
	O-58	COFFIN, SAMUEL	TFLD
8/28	S-66	RANGER MOUNTAIN RESCUE	SMED
	O-17	ELK CREEK	WFM2
	E-12	RIO GRANDE BENTONITE	GWT2
	E-23	MUD LAKE OIL	FUT2
8/29	O-67	GUY, LINDA	LSC3
	O-56	MCCOY, PATRICK A	BCMG
	O-15	JOHNSON, CHELSEA	ORDM
8/30	C-4	RED CEDAR	CRWC
	O-33	SKOLOUT, BARRY P	DRIV

Incident Finance Information

QR Code for all Finance Forms/Information

The QR Code which is on the main IAP page has a link to helpful finance pages. These include:

- Electronic CTRs for Bear Creek, Mosca, and Quartz Ridge Fires
- USFS Only – Excess Lodging Memo (to be included with your voucher when submitted if your lodging is over 150% per diem rate).

CTRs and Shift Tickets:

Scan and email SIGNED shift tickets and CTRs to:

2023.quartzridge.finance@firenet.gov

NOTE: If you only take a photo of your CTR or Shift Ticket, PLEASE make sure that it is legible. All phones do have a scanning app, I can show you how if you would like.

- 1) Does your shift ticket or CTR include:
 - a. Your name? The date? The fire you were working on? Your incident supervisor's signature (wet or electronic)?
 - b. Justification for excess hours and/or hazard/environmental pay?
 - c. Start and stop mileage and hours of work time (Shift Tickets)?

Incident Information:

Bear Creek Fire – CO-SJF-000570 – P2QJC4 (0213)

Quartz Ridge Fire – CO-SJF-000678 – P2QH39 (0213)

Mosca Fire – CO-SJF-000705 – P2EKU7 (0213)

Saw Parts Request

GM# _____

Name: _____

Resource #: _____

Request Date: _____

Contact #: _____

Pickup Date: _____

Saw Info	
Make:	<input type="checkbox"/> Stihl <input type="checkbox"/> Husqvarna <input type="checkbox"/> Other: _____
Model:	_____
Bar Length:	<input type="checkbox"/> 20" <input type="checkbox"/> 22" <input type="checkbox"/> 24" <input type="checkbox"/> 25" <input type="checkbox"/> 28" <input type="checkbox"/> 30" <input type="checkbox"/> 32" <input type="checkbox"/> 36"

Request

Amount	Part Name	Part Number

For Sprocket (*) & Chain Orders, Fill Out Below
of Drivers: _____
Pitch: <input type="checkbox"/> 1/4" <input type="checkbox"/> 3/8" <input type="checkbox"/> .325" <input type="checkbox"/> .404" <input type="checkbox"/> 3/4"
Guage: <input type="checkbox"/> .043 <input type="checkbox"/> .050 <input type="checkbox"/> .058 <input type="checkbox"/> .063
Tooth Layout: <input type="checkbox"/> Full <input type="checkbox"/> Semi-Skip <input type="checkbox"/> Full Skip
Tooth Cut: <input type="checkbox"/> Chisel <input type="checkbox"/> Micro-Chisel <input type="checkbox"/> Semi-Chisel <input type="checkbox"/> Chamfer-Chisel
Sprocket Teeth (*): _____

Approver Name (Print)

Position

Signature

****** Signature required from DIVS or higher to order saw parts ******

ACTIVITY LOG (ICS 214)

1. Incident Name:	2. Operational Period: Date From: _____ Date To: _____ Time From: _____ Time To: _____																																													
3. Name:	4. ICS Position:	5. Home Agency (and Unit):																																												
6. Resources Assigned:																																														
<table border="1" style="width: 100%; border-collapse: collapse;"><thead><tr><th style="width: 33%; text-align: center;">Name</th><th style="width: 33%; text-align: center;">ICS Position</th><th style="width: 33%; text-align: center;">Home Agency (and Unit)</th></tr></thead><tbody><tr><td> </td><td> </td><td> </td></tr><tr><td> </td><td> </td><td> </td></tr><tr><td> </td><td> </td><td> </td></tr><tr><td> </td><td> </td><td> </td></tr><tr><td> </td><td> </td><td> </td></tr><tr><td> </td><td> </td><td> </td></tr><tr><td> </td><td> </td><td> </td></tr><tr><td> </td><td> </td><td> </td></tr><tr><td> </td><td> </td><td> </td></tr></tbody></table>	Name	ICS Position	Home Agency (and Unit)																																											
Name	ICS Position	Home Agency (and Unit)																																												
7. Activity Log:																																														
<table border="1" style="width: 100%; border-collapse: collapse;"><thead><tr><th style="width: 15%; text-align: center;">Date/Time</th><th style="text-align: center;">Notable Activities</th></tr></thead><tbody><tr><td> </td><td> </td></tr><tr><td> </td><td> </td></tr><tr><td> </td><td> </td></tr><tr><td> </td><td> </td></tr><tr><td> </td><td> </td></tr><tr><td> </td><td> </td></tr><tr><td> </td><td> </td></tr><tr><td> </td><td> </td></tr><tr><td> </td><td> </td></tr><tr><td> </td><td> </td></tr><tr><td> </td><td> </td></tr><tr><td> </td><td> </td></tr><tr><td> </td><td> </td></tr><tr><td> </td><td> </td></tr><tr><td> </td><td> </td></tr><tr><td> </td><td> </td></tr><tr><td> </td><td> </td></tr><tr><td> </td><td> </td></tr><tr><td> </td><td> </td></tr><tr><td> </td><td> </td></tr><tr><td> </td><td> </td></tr></tbody></table>	Date/Time	Notable Activities																																												
Date/Time	Notable Activities																																													
8. Prepared by: Name: _____ Position/Title: _____ Signature: _____																																														
ICS 214, Page 1	Date/Time: _____																																													

MEDICAL PLAN (206 WF)

1. Incident/Project Name:	2. Operational Period:
BEAR CREEK / QUARTZ RIDGE	Date: 8/27/23

3. Ambulance			
Name	Complete Address	Phone and EMS Frequency	Advance Life Support Yes/No
Pagosa Springs EMS	189 N Pagosa Blvd Pagosa Springs, CO	911 970-382-6000	Yes
Los Pinos Fire EMS (southwest of Pagosa)	275 Browning Ave Ignacio CO	911 970-563-9501	Yes

4. Air Ambulance		
Name	Phone	Type of Aircraft & Capability
Flight For Life Mercy Regional Medical Center Durango, CO	911 800-332-3123	A-Star 350, RN/ EMTP, night capable Due to distances, may require transfer to fixed wing for transport to definitive care- VMED 28
Air Care New Mexico San Juan Regional Medical Center Farmington, NM	911 800-452-9990	A-Star 429, RN/ EMTP, night capable Due to distances, may require transfer to fixed wing for transport to definitive care- VMED 28
Classic Air Medical Southwest Memorial Hospital Cortez, CO	911 800-444-9223	Bell 407, RN/ EMTP, night capable Due to distances, may require transfer to fixed wing for transport to definitive care- VMED 28

5. Hospitals	<i>TRAVEL TIMES APPROXIMATE FROM STEVENSFIELD, PAGOSA SPRINGS</i>					
Name Complete Address	LAT: DD° MM.MMM' N LONG: DD° MM.MMM' W	Travel Times AIR GRND		Phone	Helipad Yes/No	Level of Care
Swedish Medical Center 501 E Hampden Ave Englewood, CO 80113	Lat: 39° 39.240' N Long: 104° 58.830' W	1 hr Fixed wing	5 hrs	ED direct 303-788-6911	Yes	Level 1 Trauma Center ABA Burn Center
UNM Medical Center 2211 Lomas Blvd NE Abuquerque, NM 87016	Lat: 35° 05.277' N Long: 106° 37.115' W	45 mins Fixed wing	4 hrs	ED direct 505-925-7221	Yes	Level 1 Trauma Center
Centura Mercy Hospital 1010 Three Springs Blvd Durango, CO 81301	Lat: 37° 14.161' N Long: 107° 49.658' W	15 min	1 hr	ED direct 970-764-2100	Yes	Level 3 Trauma Center
San Juan Regional Medical Center 801 W Maple St Farmington, NM 87401	Lat: 36° 43.458' N Long: 108° 13.083' W	30 min	2 hrs	ED Direct 505-609-6100	Yes	Level 4 Trauma Center
Pagosa Springs Medical Center 95 S Pagosa Blvd Pagosa Springs, CO 81147	Lat: 37° 15.097' N Long: 107° 04.590' W	direct	10 mins	ED direct 970-507-3781	Yes	Level 4 Trauma Center Urgent Care

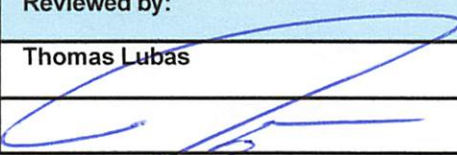
MEDICAL PLAN (206 WF)

6. Specialty Rescue			
Name	Complete Address	Phone and EMS Frequency	Advance Life Support Yes/No
Upper San Juan SAR Pagosa Springs, CO	PO Box 1481 Pagosa Springs, CO 81147	911 or SJF Dispatch Duty Officer direct 970=398-5207	ALS when available
Pagosa Springs Fire Rescue Swift Water Rescue Pagosa Springs, CO	165 N Pagosa Blvd Pagosa Springs, CO 81147	911 or SJF Dispatch	Yes

7. Division Group	AREA LOCATION CAPABILITY			
ICP	EMS Responders & Capability:	Local 911, Frank Abel MEDL		
	Equipment Available on Scene:	BLS Kit, AED		
	Medical Emergency Channel:	Dial 911	A/G: VMED28	
	ETA for Ambulance to Scene:			
	Air	5		
	Ground	5 mins		
	Approved Helispot:	Per EMS		
DIV E QUARTZ RIDGE	EMS Responders & Capability:	Ambo 1: Ross Byrd EMPF, Jon Heinrich EMPF		
	Equipment Available on Scene:	ALS/ BLS Kit, 4x4 Ambo		
	Medical Emergency Channel:	Command: CMD 1 TAC:TAC 1,2	A/G: VMED28	
	ETA for Ambulance to Scene:			
	Air	Varies on terrain		
	Ground	Varies on terrain		
	Approved Helispots:	H31 (Type2)	H38 (Type 3 only)	H32(Type 2)
	LAT:	37° 25.100' N	37° 23.405' N	37° 28.120' N
	LONG:	106° 47.556' W	106° 50.584' W	106° 46.885' W
	Additional Approved Helispots:	H35 (type 2)		
	LAT:	37° 23.508' N		
	LONG:	106° 45. 005' W		
DIV W BEAR CREEK	EMS Responders & Capability:	Medic 2: Heather Midkiff-Alexandern EMPF		
	Equipment Available on Scene:	ALS/ BLS kit, 4x4 Truck		
	Medical Emergency Channel:	Command: CMD 2 TAC: TAC 3,4	A/G: VMED 28	
	ETA for Ambulance to Scene:			
	Air:	Varies on terrain		
	Ground:	Varies on terrain		
	Approved Helispots:	H1	H8 (type 2)	
	LAT:	37° 30.365' N	37° 32.815' N	
	LONG:	107° 16.061' W	107° 16.440' W	

MEDICAL PLAN (206 WF)

CLOMAN BASE CAMP	EMS Responders & Capability:	Local 911
	Equipment Available on Scene:	Night: ALS/ BLS w Incident Staff
	Medical Emergency Channel:	Command: DEVIL MTN TAC: QUARTZ TAC A/G: VMED 28
	ETA for Ambulance to Scene:	
	Air	Direct
	Ground	10 mins
	Approved Helispot:	Stevens Airfield
	LAT:	37° 17.388' N
	LONG:	107° 3.283' W

8. Prepared by: (MEDL)	Date	Reviewed by:	Date
Frank Abel 423-595-1578	8/26/23	Thomas Lubas	8/26/23
<i>Frank Abel</i>			

MEDICAL PLAN (ICS 206 WF)

Controlled Unclassified Information//Basic

Medical Incident Report

FOR A NON-EMERGENCY INCIDENT, WORK THROUGH CHAIN OF COMMAND TO REPORT AND TRANSPORT INJURED PERSONNEL AS NECESSARY.

FOR A MEDICAL EMERGENCY: IDENTIFY ON-SCENE INCIDENT COMMANDER BY NAME AND POSITION AND ANNOUNCE "MEDICAL EMERGENCY" TO INITIATE RESPONSE FROM IMT COMMUNICATIONS/DISPATCH.

Use the following items to communicate situation to communications/dispatch.

1. CONTACT COMMUNICATIONS / DISPATCH (Verify correct frequency prior to starting report)

Ex: "Communications, Div. Alpha. Stand-by for Emergency Traffic."

2. INCIDENT STATUS: Provide incident summary (including number of patients) and command structure.

Ex: "Communications, I have a Red priority patient, unconscious, struck by a falling tree. Requesting air ambulance to Forest Road 1 at (Lat./Long.) This will be the Trout Meadow Medical, IC is TFLD Jones. EMT Smith is providing medical care."

Severity of Emergency / Transport Priority	<input type="checkbox"/> RED / PRIORITY 1 Life or limb threatening injury or illness. Evacuation need is IMMEDIATE <i>Ex: Unconscious, difficulty breathing, bleeding severely, 2^o – 3^o burns more than 4 palm sizes, heat stroke, disoriented.</i> <input type="checkbox"/> YELLOW / PRIORITY 2 Serious Injury or illness. Evacuation may be DELAYED if necessary. <i>Ex: Significant trauma, unable to walk, 2^o – 3^o burns not more than 1-3 palm sizes.</i> <input type="checkbox"/> GREEN / PRIORITY 3 Minor Injury or illness. Non-Emergency transport <i>Ex: Sprains, strains, minor heat-related illness.</i>	
Nature of Injury or Illness & Mechanism of Injury		Brief Summary of Injury or Illness <i>(Ex: Unconscious, Struck by Falling Tree)</i>
Evacuation Request		Air Ambulance / Short Haul/Hoist Ground Ambulance / Other
Patient Location		Descriptive Location & Lat. / Long. (WGS84)
Incident Name		Geographic Name + Medical <i>(Ex: Trout Meadow Medical)</i>
On-Scene Incident Commander		Name of on-scene IC of Incident within an Incident <i>(Ex: TFLD Jones)</i>
Patient Care		Name of Care Provider <i>(Ex: EMT Smith)</i>

3. INITIAL PATIENT ASSESSMENT: Complete this section for each patient as applicable (start with the most severe patient)

Patient Assessment: See IRPG PAGE 106

Treatment:

4. EVACUATION PLAN:

Evacuation Location (if different): (Descriptive Location (drop point, intersection, etc.) or Lat. / Long.) Patient's ETA to Evacuation Location:

Helispot / Extraction Site Size and Hazards:

5. ADDITIONAL RESOURCES / EQUIPMENT NEEDS:

Example: Paramedic/EMT, crews, immobilization devices, AED, oxygen, trauma bag, IV/fluid(s), splints, rope rescue, wheeled litter, HAZMAT, extrication

6. COMMUNICATIONS: Identify State Air/Ground EMS Frequencies and Hospital Contacts as applicable

Function	Channel Name/Number	Receive (RX)	Tone/NAC *	Transmit (TX)	Tone/NAC *
COMMAND					
AIR-TO-GRND					
TACTICAL					

7. CONTINGENCY: Considerations: If primary options fail, what actions can be implemented in conjunction with primary evacuation method? Be thinking ahead..

8. ADDITIONAL INFORMATION: Updates/Changes, etc.

REMEMBER: Confirm ETAs of resources ordered. Act according to your level of training. Be Alert. Keep Calm. Think Clearly. Act Decisively.