

Pilot Map-Division E



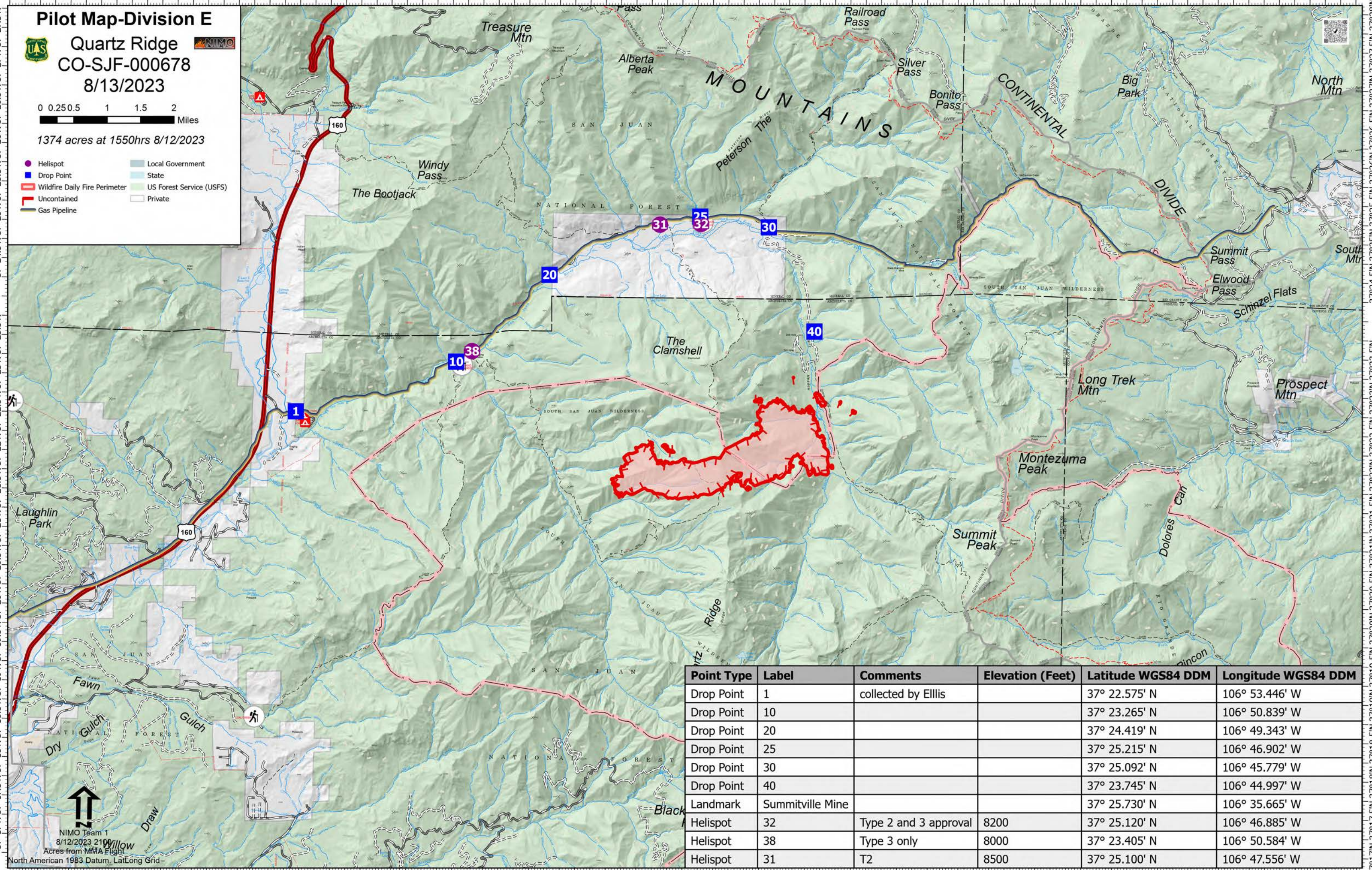
Quartz Ridge
CO-SJF-000678
8/13/2023



0 0.250.5 1 1.5 2 Miles

1374 acres at 1550hrs 8/12/2023

- Helispot
- Drop Point
- Wildfire Daily Fire Perimeter
- Uncontained
- Gas Pipeline
- Local Government
- State
- US Forest Service (USFS)
- Private



Point Type	Label	Comments	Elevation (Feet)	Latitude WGS84 DDM	Longitude WGS84 DDM
Drop Point	1	collected by Ellis		37° 22.575' N	106° 53.446' W
Drop Point	10			37° 23.265' N	106° 50.839' W
Drop Point	20			37° 24.419' N	106° 49.343' W
Drop Point	25			37° 25.215' N	106° 46.902' W
Drop Point	30			37° 25.092' N	106° 45.779' W
Drop Point	40			37° 23.745' N	106° 44.997' W
Landmark	Summitville Mine			37° 25.730' N	106° 35.665' W
Helispot	32	Type 2 and 3 approval	8200	37° 25.120' N	106° 46.885' W
Helispot	38	Type 3 only	8000	37° 23.405' N	106° 50.584' W
Helispot	31	T2	8500	37° 25.100' N	106° 47.556' W

NIMO Team 1
8/12/2023 2100 Willow
Acres from MTA Flight
North American 1983 Datum, LatLong Grid