

Pilot Map-Division E



Quartz Ridge
CO-SJF-000678

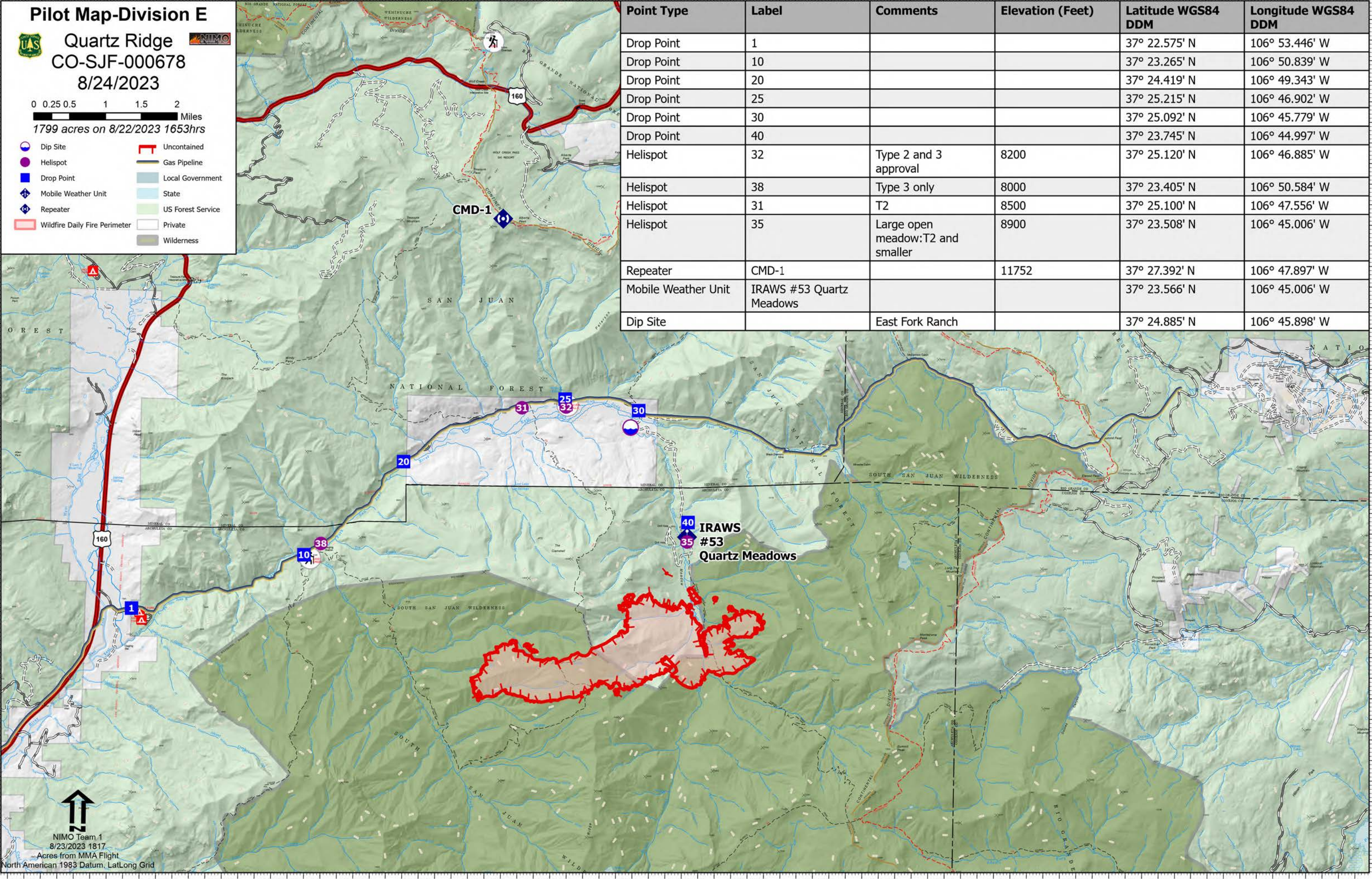


8/24/2023

0 0.25 0.5 1 1.5 2 Miles

1799 acres on 8/22/2023 1653hrs

- Dip Site
- Helispot
- Drop Point
- Mobile Weather Unit
- Repeater
- Wildfire Daily Fire Perimeter
- Uncontained
- Gas Pipeline
- Local Government
- State
- US Forest Service
- Private
- Wilderness



| Point Type | Label | Comments | Elevation (Feet) | Latitude WGS84 DDM | Longitude WGS84 DDM |
|---------------------|--------------------------|----------------------------------|------------------|--------------------|---------------------|
| Drop Point | 1 | | | 37° 22.575' N | 106° 53.446' W |
| Drop Point | 10 | | | 37° 23.265' N | 106° 50.839' W |
| Drop Point | 20 | | | 37° 24.419' N | 106° 49.343' W |
| Drop Point | 25 | | | 37° 25.215' N | 106° 46.902' W |
| Drop Point | 30 | | | 37° 25.092' N | 106° 45.779' W |
| Drop Point | 40 | | | 37° 23.745' N | 106° 44.997' W |
| Helispot | 32 | Type 2 and 3 approval | 8200 | 37° 25.120' N | 106° 46.885' W |
| Helispot | 38 | Type 3 only | 8000 | 37° 23.405' N | 106° 50.584' W |
| Helispot | 31 | T2 | 8500 | 37° 25.100' N | 106° 47.556' W |
| Helispot | 35 | Large open meadow:T2 and smaller | 8900 | 37° 23.508' N | 106° 45.006' W |
| Repeater | CMD-1 | | 11752 | 37° 27.392' N | 106° 47.897' W |
| Mobile Weather Unit | IRAWS #53 Quartz Meadows | | | 37° 23.566' N | 106° 45.006' W |
| Dip Site | | East Fork Ranch | | 37° 24.885' N | 106° 45.898' W |

40 IRAWS
35 #53
Quartz Meadows



NIMO Team 1
8/23/2023 1817
Acres from MMA Flight
North American 1983 Datum, LatLong Grid