

Pilot Map-Division E



Quartz Ridge
CO-SJF-000678

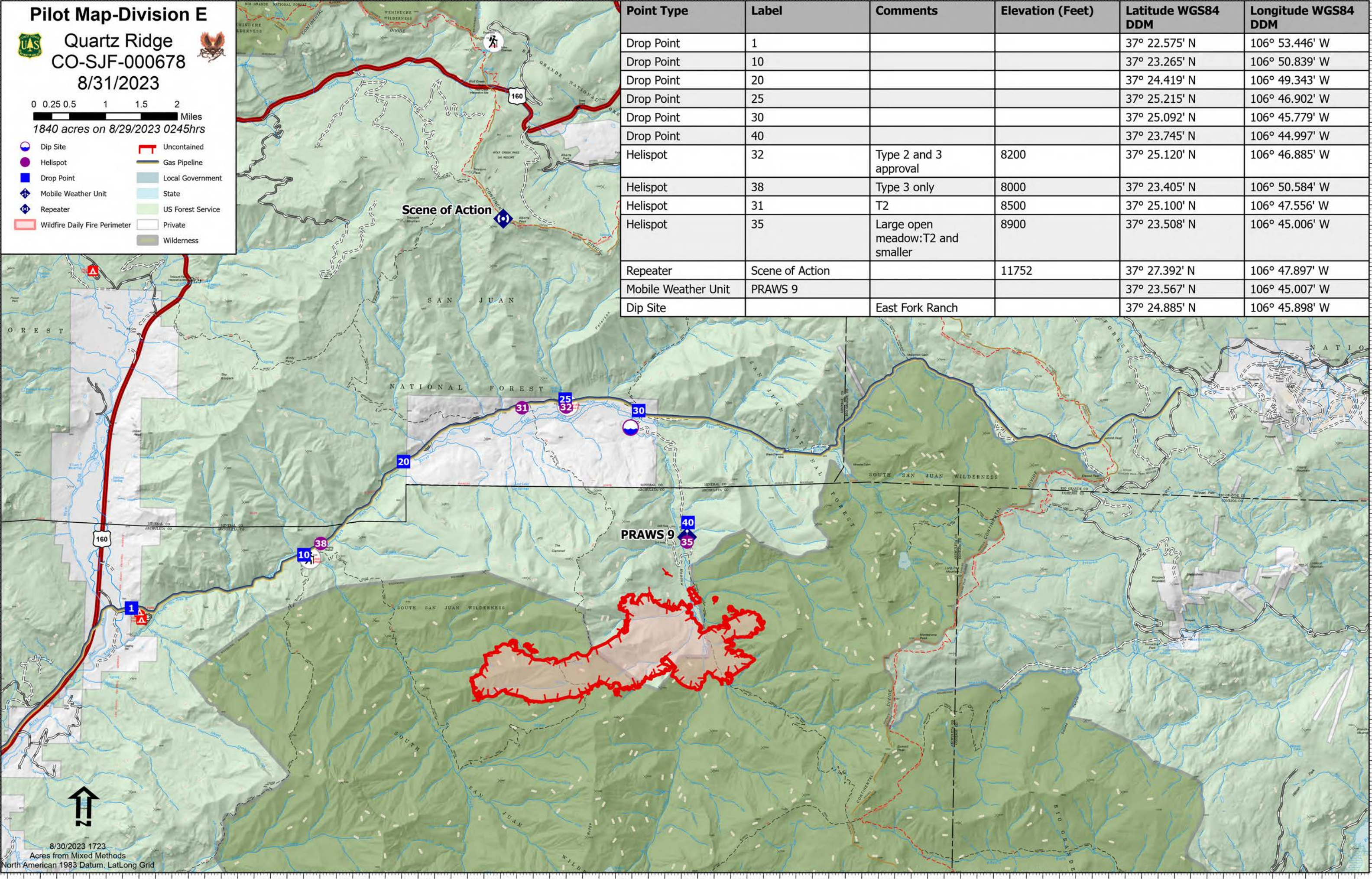


8/31/2023

0 0.25 0.5 1 1.5 2 Miles

1840 acres on 8/29/2023 0245hrs

- Dip Site
- Helispot
- Drop Point
- Mobile Weather Unit
- Repeater
- Wildfire Daily Fire Perimeter
- Uncontained
- Gas Pipeline
- Local Government
- State
- US Forest Service
- Private
- Wilderness



Point Type	Label	Comments	Elevation (Feet)	Latitude WGS84 DDM	Longitude WGS84 DDM
Drop Point	1			37° 22.575' N	106° 53.446' W
Drop Point	10			37° 23.265' N	106° 50.839' W
Drop Point	20			37° 24.419' N	106° 49.343' W
Drop Point	25			37° 25.215' N	106° 46.902' W
Drop Point	30			37° 25.092' N	106° 45.779' W
Drop Point	40			37° 23.745' N	106° 44.997' W
Helispot	32	Type 2 and 3 approval	8200	37° 25.120' N	106° 46.885' W
Helispot	38	Type 3 only	8000	37° 23.405' N	106° 50.584' W
Helispot	31	T2	8500	37° 25.100' N	106° 47.556' W
Helispot	35	Large open meadow:T2 and smaller	8900	37° 23.508' N	106° 45.006' W
Repeater	Scene of Action		11752	37° 27.392' N	106° 47.897' W
Mobile Weather Unit	PRAWS 9			37° 23.567' N	106° 45.007' W
Dip Site		East Fork Ranch		37° 24.885' N	106° 45.898' W

8/30/2023 1723
Acres from Mixed Methods
North American 1983 Datum, LatLong Grid