

Pilot Map-Division E



Quartz Ridge
CO-SJF-000678

09/02/2023



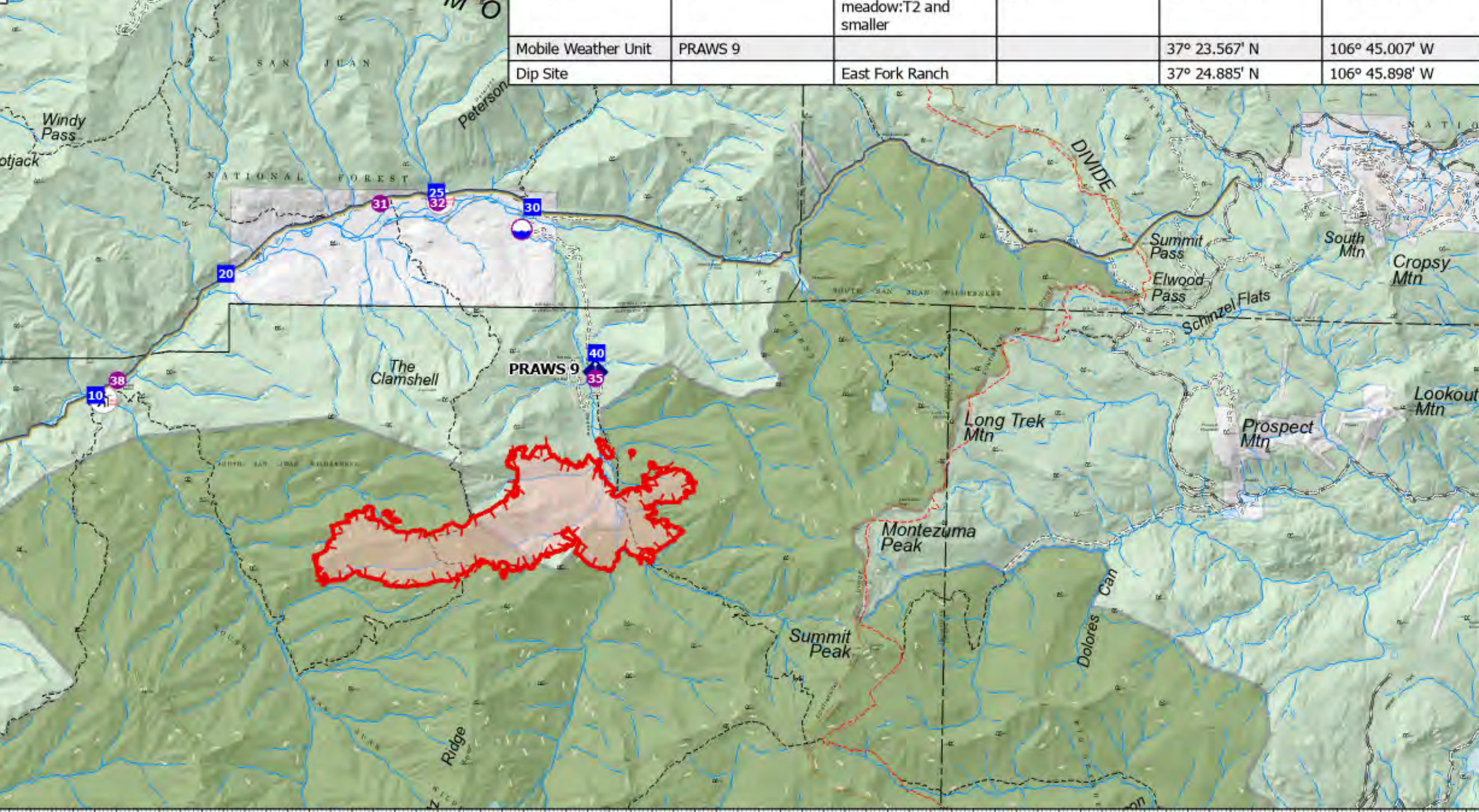
0 0.25 0.5 1 1.5 2 Miles

1840 acres on 8/29/2023 0245hrs

- Dip Site
- Helispot
- Drop Point
- Mobile Weather Unit
- Repeater
- Wildfire Daily Fire Perimeter
- Uncontained
- Gas Pipeline
- Local Government
- State
- US Forest Service
- Private
- Wilderness



| Point Type | Label | Comments | Elevation (Feet) | Latitude WGS84 DDM | Longitude WGS84 DDM |
|---------------------|-----------------|----------------------------------|------------------|--------------------|---------------------|
| Drop Point | 1 | | | 37° 22.575' N | 106° 53.446' W |
| Drop Point | 10 | | | 37° 23.265' N | 106° 50.839' W |
| Drop Point | 20 | | | 37° 24.419' N | 106° 49.343' W |
| Drop Point | 25 | | | 37° 25.215' N | 106° 46.902' W |
| Drop Point | 30 | | | 37° 25.092' N | 106° 45.779' W |
| Drop Point | 40 | | | 37° 23.745' N | 106° 44.997' W |
| Helispot | 32 | Type 2 and 3 approval | 8200 | 37° 25.120' N | 106° 46.885' W |
| Helispot | 38 | Type 3 only | 8000 | 37° 23.405' N | 106° 50.584' W |
| Helispot | 31 | T2 | 8500 | 37° 25.100' N | 106° 47.556' W |
| Repeater | Scene of Action | | 11752 | 37° 27.392' N | 106° 47.897' W |
| Helispot | 35 | Large open meadow:T2 and smaller | 8900 | 37° 23.508' N | 106° 45.006' W |
| Mobile Weather Unit | PRAWS 9 | | | 37° 23.567' N | 106° 45.007' W |
| Dip Site | | East Fork Ranch | | 37° 24.885' N | 106° 45.898' W |



9/2/2023 0954
Acres from Mixed Methods
North American 1983 Datum, Lat/Long Grid

37°19.5'N 37°20.5'N 37°21.5'N 37°22.5'N 37°23.5'N 37°24.5'N 37°25.5'N 37°26.5'N 37°27.5'N 37°28.5'N 37°29.5'N 37°30'N
106°55.5'W 106°54.5'W 106°53.5'W 106°52.5'W 106°51.5'W 106°50.5'W 106°49.5'W 106°48.5'W 106°47.5'W 106°46.5'W 106°45.5'W 106°44.5'W 106°43.5'W 106°42.5'W 106°41.5'W 106°40.5'W 106°39.5'W 106°38.5'W 106°37.5'W 106°36.5'W 106°35.5'W