

Incident Action Plan

# SAINT CHARLES FIRE

CO-PSF-001717  
P2 QP9D (0212)



DAY SHIFT  
10/23/2023 0700-2130

NIGHT SHIFT  
10/23 – 24/2023 1800-0830


IAP & Maps







## ORGANIZATION ASSIGNMENT LIST (ICS 203)

|  |                                     |  |                                |   |  |
|--|-------------------------------------|--|--------------------------------|---|--|
| <b>1. Incident Name:</b><br>Saint Charles Fire     |                                     | <b>2. Operational Period: Date From:</b> 10/23/2023<br>Time From: 0700 |                                | <b>Date To:</b> 10/23/2023<br><b>Time To:</b> 2130  |  |
| <b>3. Incident Commander(s) and Command Staff:</b> |                                     |  | <b>7. Operation Section:</b>   |   |  |
| IC   | Brandon Bonenberger                 | Field Operations   | Scott Campbell 719-522-3118    |   |  |
|  | 307-330-3611                        | Strat Ops  | Eric Zanotto (V)               |   |  |
| Safety Officer                                     | Damon McRae 928-651-4480            |  |                                |   |  |
| Information Officer                                | Allyson Pokrzywinski 479-981-0602   | Staging Area   |                                |   |  |
| Liaison Officer                                    | Brian Nielson 435-851-2949          | <b>Branch</b>  | <b>I</b>                       |   |  |
| <b>4. Agency/Organization Representatives:</b>     |                                     | Division/Group   | Alpha                          | Eric Panabaker 970-623-9100   |  |
| Agency/Organization                                | Name                                | Division/Group   | Delta                          | Terry McShane 970-309-4554  |  |
| USFS/SCRD DR                                       | Destiny Chapman / Perry Edwards (T) | Division/Group   | Kilo                           | Unstaffed   |  |
| USFS/SCRD DFMO                                     | Dennis Page                         | Division/Group   |                                |   |  |
| USFS FFMO  | Bill King                           | Division/Group   | Structure                      | Flavio Jaramillo 719-429-1770,<br>Steven Thime 719-660-5567   |  |
| USFS FAFMO   | Paul Delmerico                      | <b>Branch</b>  | <b>II</b>                      |   |  |
| Rye Fire Chief                                     | Steve Bennett                       | Division/Group   | Night                          | TFLD Dan Battin 719-216-6091  |  |
| Beulah Fire Chief                                  | Bryan Ware                          | Division/Group   |                                |   |  |
| Pueblo County                                      | Joshua Johnson 719-406-5361         | Division/Group   |                                |   |  |
| Custer County                                      | Robyn Knappe 719-269-7952           | Division/Group   |                                |   |  |
|  |                                     | Division/Group   |                                |   |  |
|  |                                     | <b>Branch</b>  | <b>III</b>                     |   |  |
|  |                                     | Division/Group   |                                |   |  |
|  |                                     | Division/Group   |                                |   |  |
|  |                                     | Division/Group   |                                |   |  |
|  |                                     | Division/Group   |                                |   |  |
|  |                                     | <b>Branch</b>  | <b>IV</b>                      |   |  |
|  |                                     | Division/Group   |                                |   |  |
| <b>5. Planning Section:</b>                        |                                     | Division/Group   |                                |   |  |
| Chief  | Nancy Masters                       | Division/Group   |                                |   |  |
|  | 208-908-2805                        | Division/Group   |                                |   |  |
| Resource Unit                                      |                                     | Division/Group   |                                |   |  |
| Situation Unit                                     |                                     | <b>Branch</b>  | <b>V</b>                       |   |  |
| Documentation Unit                                 | Spencer Pollock                     | Division/Group   |                                |   |  |
| Demobilization Unit                                |                                     | Division/Group   |                                |   |  |
| GISS   | Glenda Tores 719-429-1707           | Division/Group   |                                |   |  |
| FBAN   |                                     | Division/Group   |                                |   |  |
| IMET   |                                     | Division/Group   |                                |   |  |
| Training Tech Spec                                 |                                     | <b>Air Operations Branch</b>   |                                | <b>Director:</b>  |  |
| SOPL   |                                     | Air Support Group Supervisor   |                                | Mike Spink 719-258-0365   |  |
|  |                                     | Air Tactical Group Supervisor  |                                | Bob Leighty 303-989-4307  |  |
|  |                                     | Helibase Manager   |                                |   |  |
| <b>6. Logistics Section</b>                        |                                     |  |                                |   |  |
| Chief  | Joe Velssquez 719-429-0453          |  |                                |   |  |
| Receiving & Distribution                           | John McCain (T) 719-313-3902        |  |                                |   |  |
| Facilities Unit                                    |                                     |  |                                |   |  |
| Ground Support Unit                                |                                     |  |                                |   |  |
| Communications Unit                                |                                     |  |                                |   |  |
| Medical Unit                                       |                                     |  |                                |   |  |
| Ordering   | Rick Maestas 719-334-2469           |  |                                |   |  |
|  |                                     |  |                                |   |  |
|  |                                     | <b>8. Finance/Administration Section:</b>                              |                                |   |  |
|  |                                     | Chief  | Megan Jackson (V) 970-749-9734 |   |  |
|  |                                     | Time Unit  |                                |   |  |
|  |                                     | Procurement Unit   |                                |   |  |
|  |                                     | Comp/Claims Unit   |                                |   |  |
|  |                                     | Cost Unit  |                                |   |  |
| <b>Prepared By: Name:</b> Nancy Masters            |                                     | <b>Position/Title:</b> PSC   |                                | <b>Signature:</b>  |  |
| <b>ICS 203</b>                                     |                                     | <b>Date/Time:</b> 10/22/2023 2300 hours                                |                                | <small>NIMS IAP</small>   |  |

**.DISCUSSION**...Dry and warm conditions are expected to persist through Monday and most of Tuesday. RH will recover to around 40% overnight tonight and dip back down to around 15% tomorrow. Winds tomorrow will pick up late morning, gusting out of the southwest for most of the day. Sustained winds will be around 10-15 mph with gusts upwards of 25 mph at times during the afternoon. Currently, no precipitation is expected on Monday. For Tuesday, temperatures drop across the area as a weak front pushes through from the north. Winds will be more variable and highly dependent on the exact timing of the front, which is currently slated to move through shortly after midday. Winds over the higher terrain will remain mostly from the southwest on Tuesday, while winds over the lower elevations of the plains will swing northeast as the front passes by before returning to westerly flow later in the day. The chance for an isolated shower or two over the peaks of the mountains remains for Tuesday afternoon, but currently the chance for any notable moisture near the burn sight is low (around 10-15%).

Temperatures on Wednesday will be similar, but the chances for precipitation go to near zero and RH will be just a bit higher around 20% or so. Southwest winds remain over the terrain while the plains have mainly southerly flow, all around 10-15 mph with gusts approaching 20 mph.

**.MONDAY**...

Sky/weather.....Sunny.  
LAL.....1.  
Max temperature.....68F.  
Min humidity.....12-17 percent.  
Wind (20 ft).....Southwest winds 12-16 mph.  
Mixing height.....1000 ft agl until 1000. 8500 ft agl after 1100.  
Transport winds.....Southwest around 20 mph.  
Smoke dispersal.....Poor until 1000, then fair until 1100, then excellent.  
Haines Index...5 or moderate potential for large plume dominated fire growth.

**.MONDAY NIGHT**...

Sky/weather.....Mostly clear.  
LAL.....1.  
Min temperature.....48F.  
Max humidity.....42-47 percent.  
Wind (20 ft).....Southwest winds 11-15 mph.  
Mixing height.....1000 ft agl.  
Transport winds.....Southwest around 15 mph.  
Smoke dispersal.....Poor.  
Haines Index.....5 or moderate potential for large plume dominated fire growth.

**.TUESDAY**...

Sky/weather.....Partly sunny(56 percent).  
LAL.....1.  
Max temperature.....62F.  
Min humidity.....26-31 percent.  
Wind (20 ft).....Southwest winds around 14 mph.  
Mixing height.....2500 ft agl until 1100, then 5500 ft agl.  
Transport winds.....Southwest around 12 mph.  
Smoke dispersal.....Poor until 1100, then good until 1700, then fair.  
Haines Index.....4 or low potential for large plume dominated fire growth.

**.WEDNESDAY**...Partly cloudy. Lows in the lower 40s. Highs in the lower 60s. Southwest winds around 9 mph.

**.THURSDAY**...Mostly clear. Lows in the lower 40s. Highs in the lower 60s. Southwest winds around 13 mph.

**.FRIDAY**...Mostly clear. Lows in the lower 30s. Highs in the lower 50s. Southwest winds around 13 mph.

**.SATURDAY**...Mostly clear. Lows in the upper 30s. Highs in the upper 50s.

**.SUNDAY**...Colder. Partly cloudy. Slight chance of snow showers and showers. Lows in the upper 20s. Highs in the lower 40s.

















### Air Operations Summary (ICS 220)

|  |                                    |   |                            |                                   |  |                                       |                                   |
|--|------------------------------------|---|----------------------------|-----------------------------------|--|---------------------------------------|-----------------------------------|
| <b>1. Incident Name:</b><br><br><b>Saint Charles Fire</b>  |                                    | <b>2. Operational Period:</b><br>Date From: <b>10/23/2023</b> Date To: <b>10/23/2023</b><br>Time From: <b>700</b> Time To: <b>2130</b>  |                            |                                   |  | <b>3. Sunrise:</b><br><br><b>0717</b> | <b>Sunset:</b><br><br><b>1812</b> |
| <b>4. Remarks (safety notes, hazards, air operations special equipment, etc.):</b><br><b>TRACK ALL DIPSITE LOCATIONS / NUMBER OF DIPS / GALLONS TAKEN.</b><br><b>All GPS DATA TO BE COLLECTED IN DEGREES, MINUTES, DECIMAL MINUTES FORMAT.</b><br><b>*AVOID Aerial Application of Retardant / Foam / Agent within 300' of Waterways, Bodies of Water, etc.</b> |                                    | <b>5. Ready Alert Aircraft:</b>   |                            |                                   | <b>6. Temporary Flight Restriction Number:</b>   |                                       |                                   |
|  |                                    | Medivac:<br>New Incident:   |                            |                                   | Altitude: <b>12000 MSL Radius 7 NM</b><br>Center Point: <b>37° 59.63<br/>105° 01.80</b>                      |                                       |                                   |
|  |                                    | <b>8. Frequencies:</b>  |                            |                                   | <b>9. Fixed-Wing (category/kind/type, make/model, N#, base):</b>   |                                       |                                   |
|  |                                    | Air/Air Fixed Wing <b>RX/TX 121.075</b><br>Air/Air TFR <b>RX/TX 119.050</b><br>Air/Ground <b>RX/TX 167.2250</b><br>Command <b>RX 169.900 TX 164.9125 TX Tone 123.0</b><br>Deck Coordinator<br>Take-Off & Landing Coordinator<br>Air Guard <b>RX/TX 168.8250 RX tone 110.9</b> |                            |                                   | Air Tactical Group Supervisor Aircraft:<br><b>A/A - 8MU (N68MU) Beech B100</b><br>Other Fixed-Wing Aircraft: |                                       |                                   |
| <b>7. Personnel:</b>   |                                    | Name:   |                            | Phone Number:                     |  |                                       |                                   |
| Air Operations Branch Director   |                                    |   |                            |                                   |  |                                       |                                   |
| Air Support Group Supervisor   |                                    | <b>Michael Spink</b>  |                            | <b>719-258-0365</b>               |  |                                       |                                   |
| Air Tactical Group Supervisor  |                                    | <b>Bob Leighty</b>  |                            | <b>970-250-0353</b>               |  |                                       |                                   |
| Helicopter Coordinator   |                                    |   |                            |                                   |  |                                       |                                   |
| Helibase Manager   |                                    |   |                            |                                   |  |                                       |                                   |
| <b>10. Helicopters (use additional sheets as necessary):</b>   |                                    |   |                            |                                   |  |                                       |                                   |
| FAA N#   | Category/Kind/Type                 | Make/Model  | Base                       | Available                         | Start  | Remarks                               |                                   |
| <b>H-5TA</b>   | <b>Helicopter, Type 2 Standard</b> | <b>B205</b>   | <b>1V6- Fremont County</b> | <b>900</b>                        | <b>800</b>   | <b>Tank, pax, recon</b>               |                                   |
| <b>H-54E</b>   | <b>Helicopter, Type 3 Standard</b> | <b>AS350B</b>   | <b>1V6- Fremont County</b> | <b>900</b>                        | <b>800</b>   | <b>Bucket, pax, recon</b>             |                                   |
|  |                                    |   |                            |                                   |  |                                       |                                   |
|  |                                    |   |                            |                                   |  |                                       |                                   |
|  |                                    |   |                            |                                   |  |                                       |                                   |
|  |                                    |   |                            |                                   |  |                                       |                                   |
| <b>11. Prepared by:</b>  |                                    | Name: <b>Michael Spink</b>  |                            | Position/Title: <b>ASGS</b>       |  | Signature: <b>/s/Michael Spink</b>    |                                   |
| <b>ICS 220, Page 1</b>   |                                    |   |                            | Date/Time: <b>10/22/2023 1930</b> |  |                                       |                                   |



# ICS 205 - INCIDENT RADIO COMMUNICATIONS PLAN

CONTROLLED UNCLASSIFIED  
INFORMATION//BASIC

| <b>1. Incident Name:</b><br>Saint Charles Fire<br>Incident Channels |          |           | <b>2. Date/Time Prepared</b><br>Date: 10/22/2023<br>Time: 1930 |          |         | <b>3. Operational Period:</b><br>Date From: 10/23/23      Date To: 10/24/23<br>Time From: 0700      Time To: 0800 |            |                            |       |             |
|---|----------|-----------|--|----------|---------|---|------------|----------------------------|-------|-------------|
| <b>4. Communications</b>  |          |           |  |          |         |   |            |                            |       |             |
| Ch#   | Function | Name      | Assigned To  | Rx Freq  | Rx Tone | Tx Freq   | Tx Tone    | Mode                       | Notes |             |
| 1   | TACTICAL | WORK 2    | Delta  | 168.6125 |         | 164.9875  | (T1) 110.9 | A                          |       |             |
| 2   | TACTICAL | WORK 1    | FOREST TAC   | 163.7125 |         | 164.9125  | (T1) 110.9 | A                          |       |             |
| 3   | TACTICAL | SNIS TAC  | ALPHA  | 167.625  |         | 167.625   | (T1) 110.9 | A                          |       |             |
| 4   | TACTICAL | R2 FTAC2  | KILO   | 166.6750 |         | 166.6750  | (T1) 110.9 | A                          |       |             |
| 5   | TACTICAL | R2 FTAC3  | STRUCTURE  | 167.325  |         | 167.325   | (T1) 110.9 | A                          |       |             |
| 6   | FOREST   | FS TWIN   | FOREST RPT   | 169.900  |         | 164.9125  | (T3) 131.8 | A                          |       |             |
| 7   | FOREST   | DEER PEAK | FOREST RPT   | 169.900  |         | 164.9125  | (T2) 123.0 | A                          |       |             |
| 8   | COMMAND  | ADOBE     | COMMAND  | 169.900  |         | 164.9125  | (T6) 156.7 | A                          |       |             |
| 9   | COMMAND  | 12 MILE   | COMMAND  | 169.9000 |         | 164.9125  | (T4) 136.5 | A                          |       |             |
| 10  | FOREST   | CORDOVA   | FOREST RPT   | 169.900  |         | 164.9125  | (T5) 146.2 | A                          |       |             |
| 11  | DISPATCH | BADITO    | FOREST RPT   | 169.900  |         | 164.9125  | (T7) 167.9 | A                          |       |             |
| 12  | TACTICAL | VIFRE 21  | MUTAL AID  | 154.280  |         | 154.280   | (T6) 156.7 | A                          |       |             |
| 13  | MEDICAL  | VMED 28   | MED  | 155.340  |         | 155.340   | (T6) 156.7 | A                          |       |             |
| 14  | A/G PRI  | AIR/GN35  | PRI  | 167.2250 |         | 167.2250  | (T1) 110.9 | A                          |       |             |
| 15  | A/G PRI  | AIR/GN10  | SEC  | 166.9375 |         | 166.9375  | (T1) 110.9 | A                          |       |             |
| 16  | A/G      | AIRGAURD  |  | 168.625  |         | 168.625   | (T1) 110.9 | A                          |       |             |
| 17  |          |           |  |          |         |   |            |                            |       |             |
| 18  |          |           |  |          |         |   |            |                            |       |             |
| 19  |          |           |  |          |         |   |            |                            |       |             |
| 20  |          |           |  |          |         |   |            |                            |       |             |
| <b>5. Special Instructions</b>                                      |          |           |  |          |         |   |            |                            |       |             |
|   |          |           |  |          |         |   |            |                            |       |             |
| <b>6. Prepared by (Communications Unit Leader): Name:</b>           |          |           |  |          |         | <b>Signature:</b> _____   |            |                            |       |             |
| <b>ICS 205 - CONTROLLED UNCLASSIFIED INFORMATION//BASIC</b>         |          |           |  |          |         | NIMS IAP  |            | <b>Date/Time:</b> 10/22/23 |       | <b>1930</b> |

|  |                          |                            |
|--|--------------------------|----------------------------|
| <b>Incident:</b><br>Saint Charles Fire | <b>Date:</b><br>10/23/23 | <b>Shift:</b><br>Day/Night |
|--|--------------------------|----------------------------|



# SAFETY MESSAGE

## SAFETY IS OUR FIRST PRIORITY



*Fire fighter safety comes first on every fire, every time*

SAFETY THOUGHT FOR TODAY

**Doesn't expecting the unexpected make the unexpected expected? Think about it!**

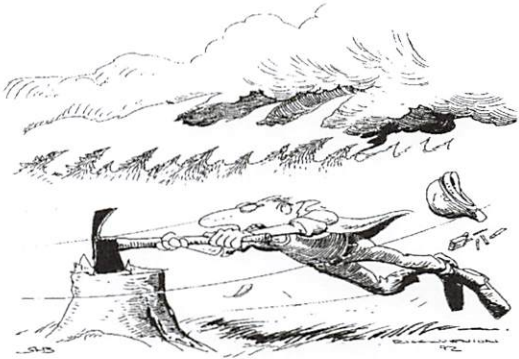
**MAJOR HAZARDS AND RISKS TO THINK ABOUT TODAY AND TONIGHT:**

**ON A HIISIDE WHERE ROLLING MATERIAL CAN IGNITE FUEL BELOW:** The danger here is not just a fire starting below your position; you need to be on the alert for rolling rocks and logs. It is not uncommon for a fire to free logs and rocks, allowing them to roll downhill. They can do this with little or no warning. Use trenching to hold the rolling material. Establish safety zones and escape routes. Any time you are working on a mid-slope, you should be very careful and vigilant.

**HAZARDOUS FIRE WEATHER:** Know where your escape routes and safety zones are. Make sure you are looking outside of the fire lines for new spots. Stay out of snag patches and timber stringers within the burn area in windy conditions.

**VEHICLE TRAVEL:** Vehicle accidents usually have serious consequences! Watch out for the other vehicle and wildlife. If you are operating a motor vehicle and talking on a cell phone you are endangering yourself and others.

**Watch-out Situation!**



15. WIND INCREASES AND/OR CHANGES DIRECTION



|   |  |
|---|--|
| <b>Safety Officer:</b> Damon McRae        |  |
| <b>Line Safety Officer:</b> Lehi Vizcaino |  |



## COMMUNICATIONS LIST (ICS 205A)

| <b>1. Incident Name:</b><br>Saint Charles Fire   |                             | <b>2. Operational Period:</b>                      |                 | Date From: 10/23/23 | Date To: 10/23/23 |
|--|-----------------------------|--|-----------------|---------------------|-------------------|
|  |                             |  |                 | Time From: 0700     | Time To: 2130     |
| <b>3. Basic Local Communications Information</b> |                             |  |                 |                     |                   |
| Incident Assigned Position                       | Name                        | Method(s) of Contact<br>(phone, pager, cell, etc.) |                 |                     |                   |
| AA District Ranger SCRD                          | Destiny Chapman             | 719-429-0032                                       |                 |                     |                   |
| AFMO BC 3-1                                      | Flavio Jaramillo            | 719-429-1770                                       |                 |                     |                   |
| DFMO DIV 3                                       | Dennis Page                 | 719-429-2510                                       |                 |                     |                   |
| IC   | Brandon Bonenberger (Bones) | 307-330-3611                                       |                 |                     |                   |
| Safety   | Damon McRae                 | 928-651-4480                                       |                 |                     |                   |
| Liason   | Brian Nielson               | 435-851-2949                                       |                 |                     |                   |
| Information                                      | Allyson Pokrzywinski        | 479-981-0602                                       |                 |                     |                   |
| Plans Chief                                      | Nancy Masters               | 208-908-2805                                       |                 |                     |                   |
| GISS   | Glenda Tores                | 719-429-1707                                       |                 |                     |                   |
| Logs Chief                                       | Joe Velasquez               | 719-429-0453                                       |                 |                     |                   |
| Receiving and Distribution (T)                   | John McClain                | 719-313-3902                                       |                 |                     |                   |
| Ordering   | Rick Maestas                | 719-334-2469                                       |                 |                     |                   |
| Operations                                       | Scott Campbell              | 719-522-3118                                       |                 |                     |                   |
| DIVS A   | Eric Panebaker              | 970-623-9100                                       |                 |                     |                   |
| DIVS D   | Terry McShane               | 970-309-4554                                       |                 |                     |                   |
| DIVS K   | Unstaffed                   |  |                 |                     |                   |
| Structure Group                                  | Flavio Jaramillo            | 719-429-1770                                       |                 |                     |                   |
|  | Steven Thime                | 719-660-5567                                       |                 |                     |                   |
| TFLD NIGHT                                       | Dan Battin                  | 719-216-6091                                       |                 |                     |                   |
| Finance  | Megan Jackson               | 970-749-9734                                       |                 |                     |                   |
|  |                             | MEETING SCHEDULE                                   |                 |                     |                   |
|  |                             | 7300 PRE OPS Briefing                              |                 |                     |                   |
|  |                             | 0800 OPS Briefing                                  |                 |                     |                   |
|  |                             | 0900 C&G Meeting                                   |                 |                     |                   |
|  |                             | 1700 IC/AA Call                                    |                 |                     |                   |
|  |                             | 1730 Planning Mtg                                  |                 |                     |                   |
| Pueblo Dispatch                                  | San Isabel Dispatcher       | 719-553-1600                                       |                 |                     |                   |
| Pueblo Expanded Disp                             | Robyn                       | 719-553-1620                                       |                 |                     |                   |
| <b>4. Prepared by:</b>                           |                             |  |                 |                     |                   |
| Name:  |                             | #REF!  | Position/Title: | COML                | Signature: _____  |
| ICS 205A   | NIMS IAP                    | IAP Page _____                                     | Date/Time:      | 10/22/23            |                   |

# Public Information

**Fire Information Phone Number:** 970-628-0130, hours 0800 to 2000

**Email Address:** [2023.saintcharles@firenet.gov](mailto:2023.saintcharles@firenet.gov)

**Facebook Page:** [www.facebook.com/saintcharlesfire](http://www.facebook.com/saintcharlesfire)

QR Code for facebook page



**Please send photos to email address:** [2023.saintcharles@firenet.gov](mailto:2023.saintcharles@firenet.gov)

## Finance

### **CTRs and Shift Tickets:**

- 1) Scan and email SIGNED shift tickets and CTRs to: [2023.saintcharles.finance@firenet.gov](mailto:2023.saintcharles.finance@firenet.gov)  
NOTE: If you only take a photo of your CTR or Shift Ticket, PLEASE make sure that it is legible. All phones do have a scanning app, I can show you how if you would like.  
OR  
Hard copies of shift tickets and CTRs can be turned in at morning briefings also.
- 2) Does your shift ticket or CTR include:
  - a. Your name?
  - b. The date?
  - c. Your incident supervisor's signature (wet or electronic)?
  - d. Justification for excess hours and/or hazard/environmental pay?
  - e. Start and stop mileage and hours of work time (Shift Tickets)?

### **Incident Information:**

Saint Charles Fire – CO-PSF-001717

Finance Code: **P2 QP9D (0212)**

*Megan, your Finance Section Chief*

## LOGISTICS

Internet @ Workcenter

Username: St Charlie WiFi

Password: Fire911!

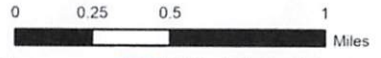




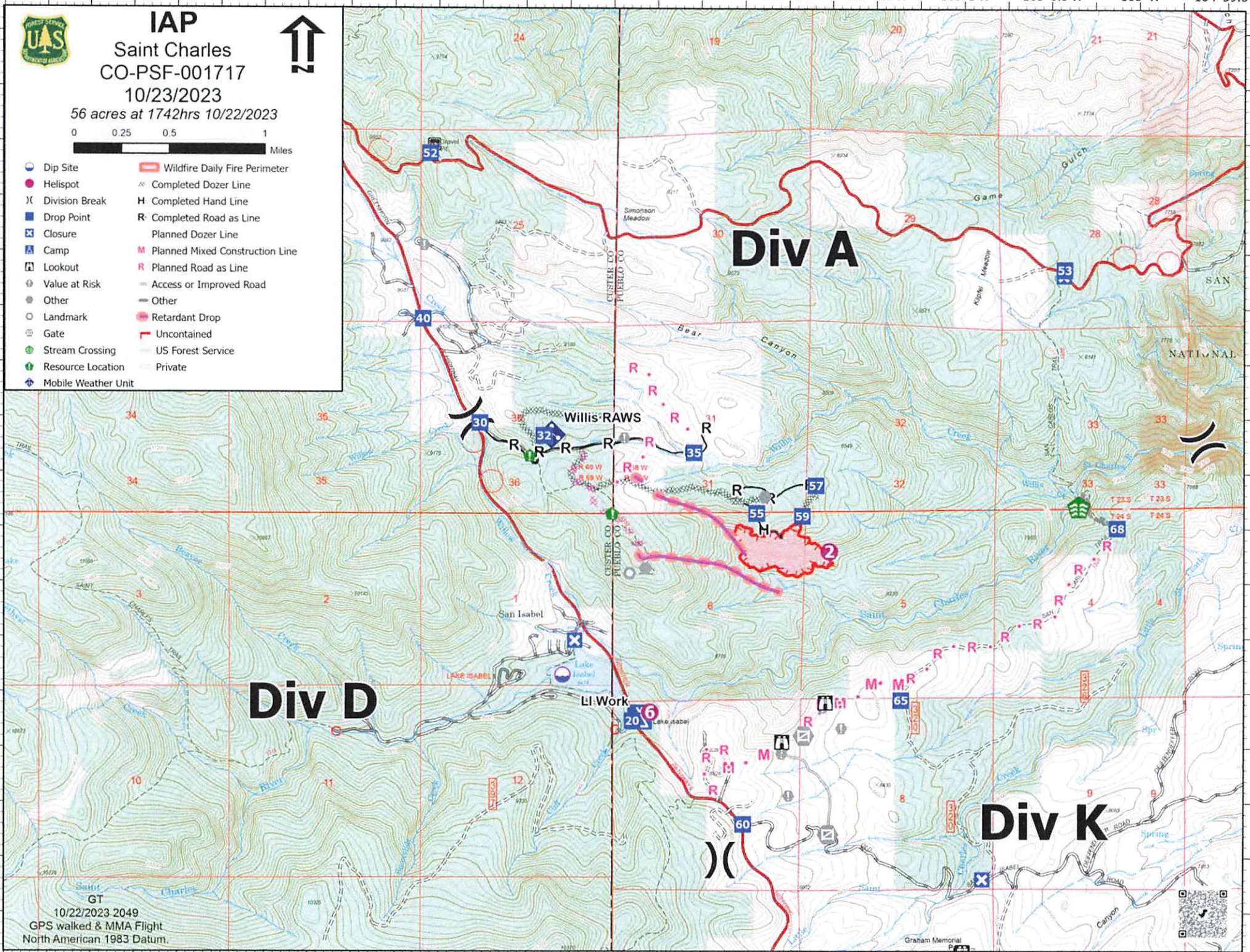
# IAP

Saint Charles  
CO-PSF-001717  
10/23/2023

56 acres at 1742hrs 10/22/2023



- Dip Site
- Helispot
- Division Break
- Drop Point
- Closure
- Camp
- Lookout
- Value at Risk
- Other
- Landmark
- Gate
- Stream Crossing
- Resource Location
- Mobile Weather Unit
- Wildfire Daily Fire Perimeter
- Completed Dozer Line
- Completed Hand Line
- Completed Road as Line
- Planned Dozer Line
- Planned Mixed Construction Line
- Planned Road as Line
- Access or Improved Road
- Other
- Retardant Drop
- Uncontained
- US Forest Service
- Private



## Div A

## Div D

## Div K

10/22/2023 2049  
GPS walked & MMA Flight  
North American 1983 Datum.











## MEDICAL PLAN (206 WF)

| <b>1. Incident / Project Name</b>  |   |                               | <b>2. Operational Period</b>        |                          |                           |         |    |                              |
|--|---|-------------------------------|-------------------------------------|--------------------------|---------------------------|---------|----|------------------------------|
| <b>Saint Charles Fire</b>  |   |                               | Date/Time: 10/23 - 24/2023          |                          | 0700-0800                 |         |    |                              |
| <b>3. Ambulance Services</b>   |   |                               |                                     |                          |                           |         |    |                              |
| Name   | Location                                  | Phone and Emergency Frequency | Advanced Life Support (ALS)         |                          |                           |         |    |                              |
|  |   |                               | YES                                 | NO                       |                           |         |    |                              |
| RYE FIRE DEPARTMENT  | RYE, CO                                   | 911                           | <input checked="" type="checkbox"/> | <input type="checkbox"/> |                           |         |    |                              |
| AMERICAN MEDICAL RESPONSE  | PUEBLO, CO                                | 911                           | <input checked="" type="checkbox"/> | <input type="checkbox"/> |                           |         |    |                              |
| <b>4. Air Ambulance Services</b>   |   |                               |                                     |                          |                           |         |    |                              |
| Name   | Phone                                     | Type of Aircraft & Capability |                                     |                          |                           |         |    |                              |
| UC HEALTH  | Primary: 911<br>Secondary: 1-844-867-4590 | Astar 350, NVG, Blood         |                                     |                          |                           |         |    |                              |
| FLIGHT FOR LIFE  | Primary: 911<br>Secondary: 1-800-332-3123 | Astar, NVG, Blood             |                                     |                          |                           |         |    |                              |
|  |   |                               |                                     |                          |                           |         |    |                              |
|  |   |                               |                                     |                          |                           |         |    |                              |
| <b>5. Hospitals</b>  |   |                               |                                     |                          |                           |         |    |                              |
| Name<br>Complete Address   | Degrees Decimal Minutes                   |                               | Air                                 | Gnd                      | Phone                     | Helipad |    | Level of Care<br>Facility    |
|  | Lat:                                      | Long:                         |                                     |                          |                           | Yes     | No |                              |
| CENTURA ST MARY-CORWIN HOSPITAL<br>1008 Minnequa Ave Pueblo, CO                | Lat:                                      | 38°14.03 N                    | 15 min                              | 42 min                   | 719-557-5656<br>Charge RN | X       |    | Level 3<br>(Limited Cardiac) |
|  | Long:                                     | 104°37.43 W                   |                                     |                          |                           |         |    |                              |
| PARKVIEW MEDICAL CENTER<br>400 W 16th St Pueblo, CO                            | Lat:                                      | 38°16.88 N                    | 15 min                              | 46 min                   | 719-288-2100<br>Charge RN | X       |    | Level 3                      |
|  | Long:                                     | 104°36.73 W                   |                                     |                          |                           |         |    |                              |
| UCHEALTH - MEMORIAL HOSPITAL CENTRAL<br>1400 E Boulder St Colorado Springs, CO | Lat:                                      | 38°50.39 N                    | 35 min                              | 1hr 22min                | 719-365-2410<br>Charge RN | X       |    | Level 1                      |
|  | Long:                                     | 104°48.00 W                   |                                     |                          |                           |         |    |                              |
| CENTURA PENROSE HOSPITAL<br>2222 N Nevada Ave Colorado Springs, CO             | Lat:                                      | 38°51.94 N                    | 35 min                              | 1hr 25min                | 719-444-7690<br>Opt 3     | X       |    | Level 2                      |
|  | Long:                                     | 104°49.33 W                   |                                     |                          |                           |         |    |                              |

# MEDICAL PLAN (206 WF)

| <b>BRANCH I</b>            |                                |  |                    |                  |
|----------------------------|--------------------------------|--|--------------------|------------------|
| <b>DIV<br/>A</b>           | EMS Responders & Capabilities: | Ambo1 Lane, EMPF Eyerly  |                    |                  |
|                            | Equipment Available on Scene:  | ALS Ambulance, ALS   |                    |                  |
|                            | Medical Emergency Channel:     | Command ADOBE  | A/G AIR/GN 35      |                  |
|                            | ETA for Ambulance to Scene:    | All times Approximate  |                    |                  |
|                            | Air:                           | 22 minutes from request  |                    |                  |
|                            | Ground:                        | 25 min from RYE, 43 min from Pueblo (Dispatch to workforce center) |                    |                  |
|                            | Approved Heli-spot             | H2   |                    |                  |
|                            | Lat:                           | 37°59.642 N  |                    |                  |
| Long:                      | 105°01.770 W                   |  |                    |                  |
| <b>DIV<br/>D</b>           | EMS Responders & Capabilities: | Ambo2 Byrd   |                    |                  |
|                            | Equipment Available on Scene:  | ALS Ambulance  |                    |                  |
|                            | Medical Emergency Channel:     | Command ADOBE  | A/G AIR/GN 35      |                  |
|                            | ETA for Ambulance to Scene:    | All times Approximate  |                    |                  |
|                            | Air:                           | 22 minutes from request  |                    |                  |
|                            | Ground:                        | 25 min from RYE, 43 min from Pueblo (Dispatch to workforce center) |                    |                  |
|                            | Approved Heli-spot             | H6   |                    |                  |
|                            | Lat:                           | 37°59.907 N  |                    |                  |
| Long:                      | 105°02.789 W                   |  |                    |                  |
| <b>DIV<br/>K</b>           | EMS Responders & Capabilities: |  |                    |                  |
|                            | Equipment Available on Scene:  |  |                    |                  |
|                            | Medical Emergency Channel:     | Command ADOBE  | A/G AIR/GN35       |                  |
|                            | ETA for Ambulance to Scene:    | All times Approximate  |                    |                  |
|                            | Air:                           | 22 minutes from request  |                    |                  |
|                            | Ground:                        | 25 min from RYE, 43 min from Pueblo (Dispatch to workforce center) |                    |                  |
|                            | Approved Heli-spot             | H2   |                    |                  |
|                            | Lat:                           | 37°59.642 N  |                    |                  |
| Long:                      | 105°01.770 W                   |  |                    |                  |
| <b>Structure<br/>Group</b> | EMS Responders & Capabilities: | West Metro B13 Botsford (EMPF)                                     |                    |                  |
|                            | Equipment Available on Scene:  | ALS  |                    |                  |
|                            | Medical Emergency Channel:     | Command ADOBE  | A/G AIR/GN35       |                  |
|                            | ETA for Ambulance to Scene:    | All times Approximate  |                    |                  |
|                            | Air:                           | 22 minutes from request  |                    |                  |
|                            | Ground:                        | 25 min from RYE, 43 min from Pueblo (Dispatch to workforce center) |                    |                  |
|                            | Approved Heli-spot             | H6   |                    |                  |
|                            | Lat:                           | 37°59.907 N  |                    |                  |
| Long:                      | 105°02.789 W                   |  |                    |                  |
| <b>BRANCH II</b>           |                                |  |                    |                  |
| <b>NIGHT<br/>GROUP</b>     | EMS Responders & Capabilities: |  |                    |                  |
|                            | Equipment Available on Scene:  |  |                    |                  |
|                            | Medical Emergency Channel:     | Command ADOBE  | A/G AIR/GN35       |                  |
|                            | ETA for Ambulance to Scene:    | All times Approximate  |                    |                  |
|                            | Air:                           | 22 minutes from request  |                    |                  |
|                            | Ground:                        | 25 min from RYE, 43 min from Pueblo (Dispatch to workforce center) |                    |                  |
|                            | Approved Heli-spot             | H6   |                    |                  |
|                            | Lat:                           | 37°59.907 N  |                    |                  |
| Long:                      | 105°02.789 W                   |  |                    |                  |
| <b>8. Prepared By</b>      |                                | <b>Date/Time</b>   | <b>Reviewed by</b> | <b>Date/Time</b> |
| Jeff Childers              |                                | 10/22/2023   | Damon McRae        | 10/23/23         |

# MEDICAL PLAN (ICS 206 WF)

Controlled Unclassified Information//Basic

## Medical Incident Report

**FOR A NON-EMERGENCY INCIDENT, WORK THROUGH CHAIN OF COMMAND TO REPORT AND TRANSPORT INJURED PERSONNEL AS NECESSARY.**

**FOR A MEDICAL EMERGENCY: IDENTIFY ON-SCENE INCIDENT COMMANDER BY NAME AND POSITION AND ANNOUNCE "MEDICAL EMERGENCY" TO INITIATE RESPONSE FROM IMT COMMUNICATIONS/DISPATCH.**

**Use the following items to communicate situation to communications/dispatch.**

**1. CONTACT COMMUNICATIONS / DISPATCH** (Verify correct frequency prior to starting report)

*Ex: "Communications, Div. Alpha. Stand-by for Emergency Traffic."*

**2. INCIDENT STATUS:** Provide incident summary (including number of patients) and command structure.

*Ex: "Communications, I have a Red priority patient, unconscious, struck by a falling tree. Requesting air ambulance to Forest Road 1 at (Lat./Long.) This will be the Trout Meadow Medical, IC is TFLD Jones. EMT Smith is providing medical care."*

|   |  |  |
|---|--|--|
| Severity of Emergency / Transport Priority        | <input type="checkbox"/> <b>RED / PRIORITY 1 Life or limb threatening injury or illness. Evacuation need is IMMEDIATE</b><br><i>Ex: Unconscious, difficulty breathing, bleeding severely, 2<sup>o</sup> – 3<sup>o</sup> burns more than 4 palm sizes, heat stroke, disoriented.</i><br><input type="checkbox"/> <b>YELLOW / PRIORITY 2 Serious Injury or illness. Evacuation may be DELAYED if necessary.</b><br><i>Ex: Significant trauma, unable to walk, 2<sup>o</sup> – 3<sup>o</sup> burns not more than 1-3 palm sizes.</i><br><input type="checkbox"/> <b>GREEN / PRIORITY 3 Minor Injury or illness. Non-Emergency transport</b><br><i>Ex: Sprains, strains, minor heat-related illness.</i> |  |
| Nature of Injury or Illness & Mechanism of Injury |  | Brief Summary of Injury or Illness<br><i>(Ex: Unconscious, Struck by Falling Tree)</i> |
| Evacuation Request                                |  | Air Ambulance / Short Haul/Hoist<br>Ground Ambulance / Other                           |
| Patient Location                                  |  | Descriptive Location & Lat. / Long. (WGS84)  |
| Incident Name                                     |  | Geographic Name + Medical<br><i>(Ex: Trout Meadow Medical)</i>                         |
| On-Scene Incident Commander                       |  | Name of on-scene IC of Incident within an Incident<br><i>(Ex: TFLD Jones)</i>          |
| Patient Care                                      |  | Name of Care Provider<br><i>(Ex: EMT Smith)</i>  |

**3. INITIAL PATIENT ASSESSMENT:** Complete this section for each patient as applicable (start with the most severe patient)

Patient Assessment: See IRPG PAGE 106

Treatment:

**4. EVACUATION PLAN:**

Evacuation Location (if different): (Descriptive Location (drop point, intersection, etc.) or Lat. / Long.) Patient's ETA to Evacuation Location:

Helispot / Extraction Site Size and Hazards:

**5. ADDITIONAL RESOURCES / EQUIPMENT NEEDS:**

*Example: Paramedic/EMT, crews, immobilization devices, AED, oxygen, trauma bag, IV/fluid(s), splints, rope rescue, wheeled litter, HAZMAT, extrication*

**6. COMMUNICATIONS: Identify State Air/Ground EMS Frequencies and Hospital Contacts as applicable**

| Function    | Channel Name/Number | Receive (RX) | Tone/NAC * | Transmit (TX) | Tone/NAC * |
|-------------|---------------------|--------------|------------|---------------|------------|
| COMMAND     |                     |              |            |               |            |
| AIR-TO-GRND |                     |              |            |               |            |
| TACTICAL    |                     |              |            |               |            |

**7. CONTINGENCY: Considerations:** If primary options fail, what actions can be implemented in conjunction with primary evacuation method? Be thinking ahead..

**8. ADDITIONAL INFORMATION:** Updates/Changes, etc.

**REMEMBER:** Confirm ETAs of resources ordered. Act according to your level of training. Be Alert. Keep Calm. Think Clearly. Act Decisively.