



# Pilot

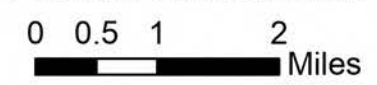
## Saint Charles

### CO-PSF-001717

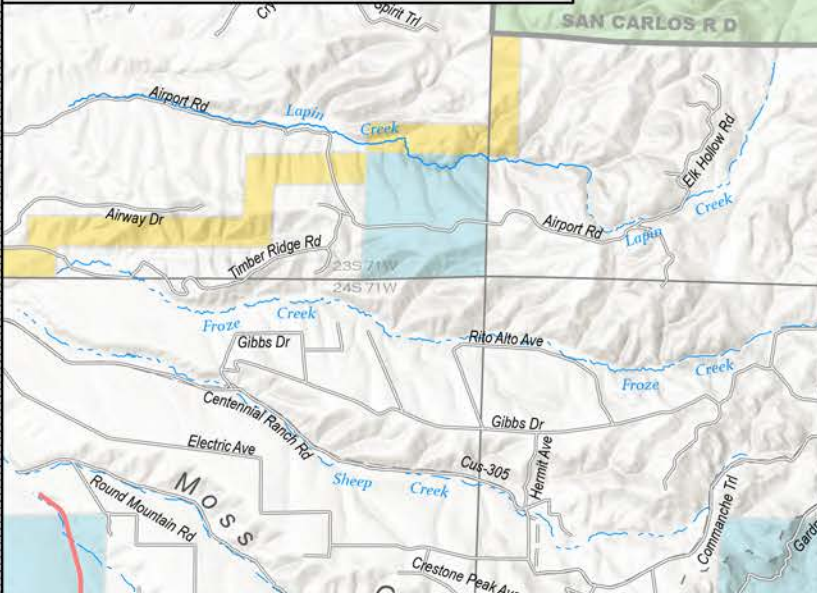
#### 10/21/2023



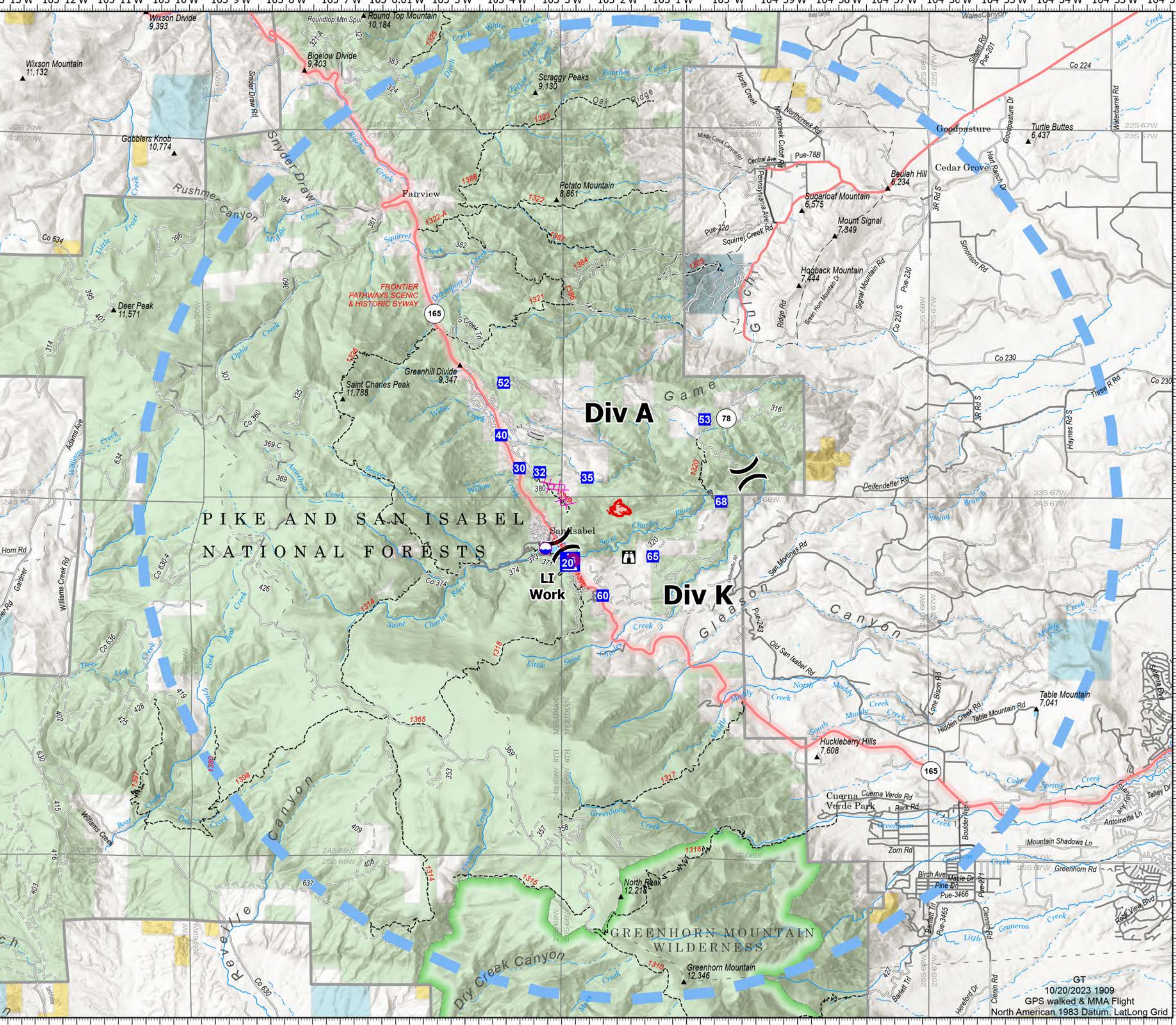
30 acres at 1432hrs 10/20/2023



- Dip Site
- Helispot
- Division Break
- Drop Point
- Camp
- Lookout
- Wildfire Daily Fire Perimeter
- Planned Dozer Line
- Access or Improved Road
- Other
- Temporary Flight Restriction
- Uncontained
- Bureau of Land Management
- Local Government
- State
- US Forest Service
- Private



FC Point Type	Point Name	Latitude	Longitude
Camp	LI Workstation	37° 58.886' N	105° 02.847' W
Dip Site		37° 59.075' N	105° 03.290' W
Division Break		38° 00.155' N	104° 59.639' W
Division Break		37° 59.123' N	105° 03.007' W
Drop Point	DP-52	38° 01.448' N	105° 04.053' W
Drop Point	DP-60	37° 58.404' N	105° 02.262' W
Drop Point	DP-53	38° 00.926' N	105° 00.426' W
Drop Point	DP-68	37° 59.751' N	105° 00.125' W
Drop Point	DP-32	38° 00.169' N	105° 03.400' W
Drop Point	DP-65	37° 58.967' N	105° 01.360' W
Drop Point	DP-30	38° 00.226' N	105° 03.765' W
Drop Point	DP-40	38° 00.698' N	105° 04.093' W
Drop Point	DP-20	37° 58.873' N	105° 02.896' W
Drop Point	DP-35	38° 00.093' N	105° 02.542' W
Helispot	H-6	37° 58.907' N	105° 02.789' W
Lookout	Lookout	37° 58.955' N	105° 01.794' W



GT  
10/20/2023 1909  
GPS walked & MMA Flight  
North American 1983 Datum, Lat/Long Grid