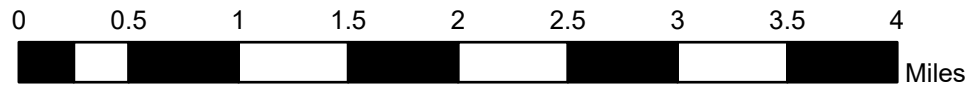
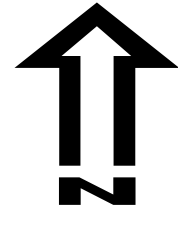




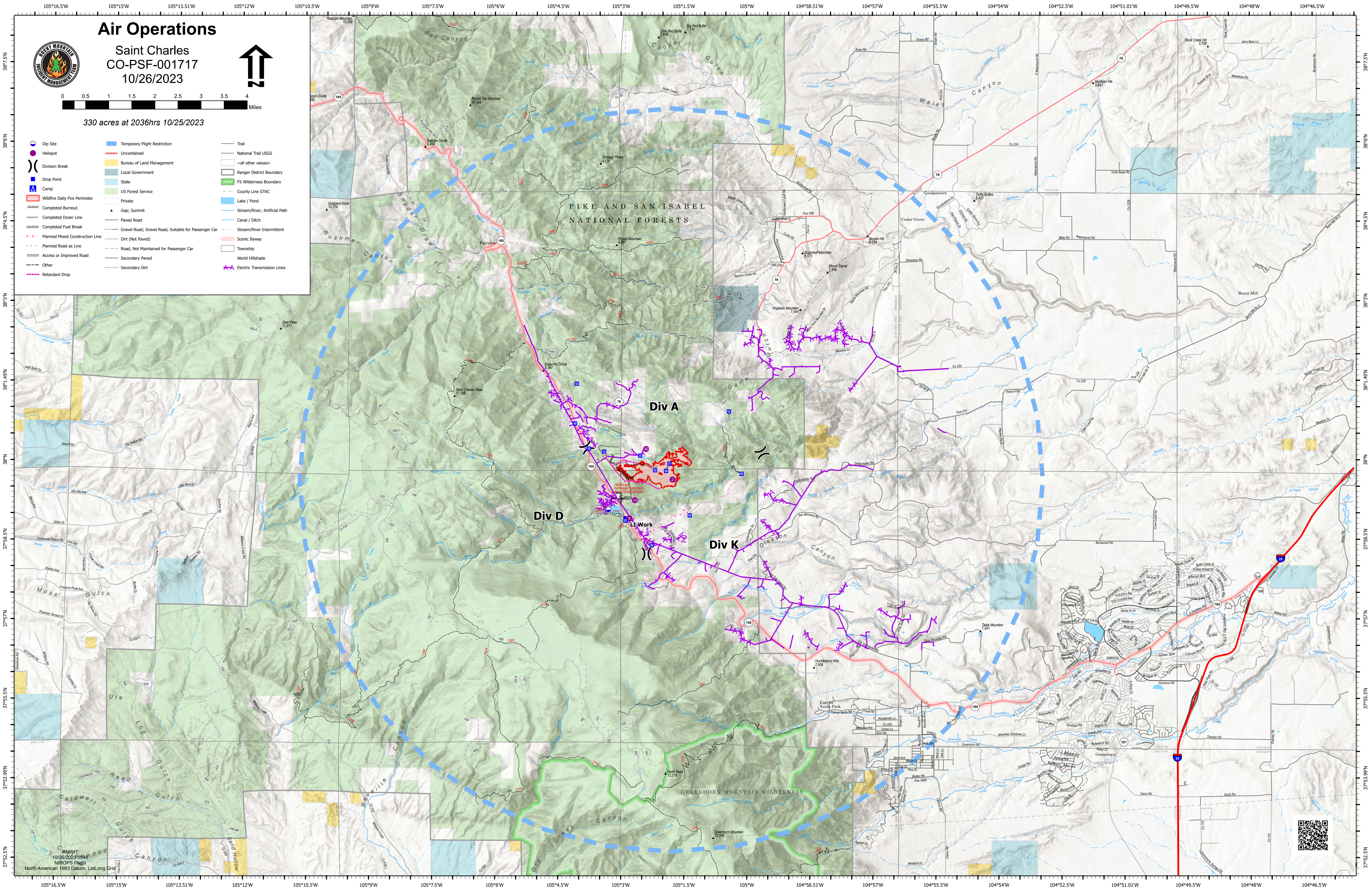
Air Operations

Saint Charles
CO-PSF-001717
10/26/2023



330 acres at 2036hrs 10/25/2023

- Dip Site
- Helispot
- Division Break
- Drop Point
- Camp
- Wildfire Daily Fire Perimeter
- Completed Burnout
- Completed Dozer Line
- Completed Fuel Break
- Planned Mixed Construction Line
- Planned Road as Line
- Access or Improved Road
- Other
- Retardant Drop
- Temporary Flight Restriction
- Uncontained
- Bureau of Land Management
- Local Government
- State
- US Forest Service
- Private
- Gap; Summit
- Paved Road
- Gravel Road; Gravel Road, Suitable for Passenger Car
- Road, Not Maintained for Passenger Car
- Secondary Paved
- Secondary Dirt
- Trail
- National Trail USGS
- <all other values>
- Ranger District Boundary
- FS Wilderness Boundary
- County Line GTAC
- Lake / Pond
- Stream/River, Artificial Path
- Canal / Ditch
- Stream/River Intermittent
- Scenic Byway
- Township
- World Hillshade
- Electric Transmission Lines



CRMIT
10/26/2023 1046'
NAD83
North American 1983 Datum, Lat/Long Grid